



圖例
NOTATION

| ZONES | | 地帶 |
|--------------------------------------|----------|-----------|
| COMMERCIAL | C | 商業 |
| RESIDENTIAL (GROUP A) | RIA | 住宅(甲類) |
| RESIDENTIAL (GROUP B) | RB | 住宅(乙類) |
| GOVERNMENT, INSTITUTION OR COMMUNITY | GIC | 政府、機構或社區 |
| OPEN SPACE | O | 休憩用地 |
| OTHER SPECIFIED USES | OU | 其他指定用途 |
| CONSERVATION AREA | CA | 自然保育區 |
| COUNTRY PARK | CP | 郊野公園 |
| COMMUNICATIONS | | |
| RAILWAY AND STATION (ELEVATED) | [Symbol] | 鐵路及車站(高架) |
| LIGHT RAIL AND STOP | [Symbol] | 輕鐵及車站 |
| MAJOR ROAD AND JUNCTION | [Symbol] | 主要道路及路口 |
| ELEVATED ROAD | [Symbol] | 高架道路 |
| RAILWAY RESERVE | [Symbol] | 鐵路專用範圍 |
| MISCELLANEOUS | | |
| BOUNDARY OF PLANNING SCHEME | [Symbol] | 規劃範圍界線 |
| PLANNING AREA NUMBER | (3) | 規劃區編號 |
| NON-BUILDING AREA | [Symbol] | 非建築用地 |

土地用途及面積一覽表
SCHEDULE OF USES AND AREAS

| USES | 大約面積及百分比 APPROXIMATE AREA & % | | 用途 |
|--------------------------------------|----------------------------------|--------|----------|
| | 公頃 HECTARES | % 百分比 | |
| COMMERCIAL | 3.44 | 0.85 | 商業 |
| RESIDENTIAL (GROUP A) | 104.22 | 26.66 | 住宅(甲類) |
| RESIDENTIAL (GROUP B) | 53.64 | 13.20 | 住宅(乙類) |
| GOVERNMENT, INSTITUTION OR COMMUNITY | 26.78 | 6.59 | 政府、機構或社區 |
| OPEN SPACE | 42.69 | 10.51 | 休憩用地 |
| OTHER SPECIFIED USES | 4.69 | 1.15 | 其他指定用途 |
| CONSERVATION AREA | 3.75 | 0.92 | 自然保育區 |
| COUNTRY PARK | 61.44 | 15.12 | 郊野公園 |
| DRAINAGE CHANNEL | 17.21 | 4.24 | 排水道 |
| MAJOR ROAD ETC. | 88.37 | 21.76 | 主要道路等 |
| TOTAL PLANNING SCHEME AREA | 406.23 | 100.00 | 規劃範圍總面積 |

夾附的《註釋》屬這份圖則的一部分，現經修訂並按照城市規劃條例第5條展示。
THE ATTACHED NOTES ALSO FORM PART OF THIS PLAN AND HAVE BEEN AMENDED FOR EXHIBITION UNDER SECTION 5 OF THE TOWN PLANNING ORDINANCE

核准圖編號 S/TSW/16 的修訂
AMENDMENTS TO APPROVED PLAN No. S/TSW/16

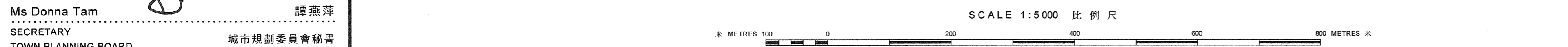
| AMENDMENTS EXHIBITED UNDER SECTION 5 OF THE TOWN PLANNING ORDINANCE | 按照城市規劃條例第5條展示的修訂 |
|---|------------------|
| AMENDMENT ITEM A | 修訂項目A項 |
| AMENDMENT ITEM B1 | 修訂項目B1項 |
| AMENDMENT ITEM B2 | 修訂項目B2項 |
| AMENDMENT ITEM B3 | 修訂項目B3項 |
| AMENDMENT ITEM C | 修訂項目C項 |

(參看附表)
(SEE ATTACHED SCHEDULE)

2024年4月12日 按照城市規劃條例第5條展示的核准圖編號 S/TSW/16 的修訂
AMENDMENTS TO APPROVED PLAN No. S/TSW/16 EXHIBITED UNDER SECTION 5 OF THE TOWN PLANNING ORDINANCE ON 12 APRIL 2024

Ms Donna Tam 譚燕萍
SECRETARY 城市規劃委員會秘書

香港城市規劃委員會依據城市規劃條例擬備的天水圍分區計劃大綱圖
TOWN PLANNING ORDINANCE, HONG KONG TOWN PLANNING BOARD
TIN SHUI WAI - OUTLINE ZONING PLAN



規劃署遵照城市規劃委員會指示擬備
PREPARED BY THE PLANNING DEPARTMENT UNDER THE DIRECTION OF THE TOWN PLANNING BOARD

圖則編號
PLAN No. S/TSW/17