

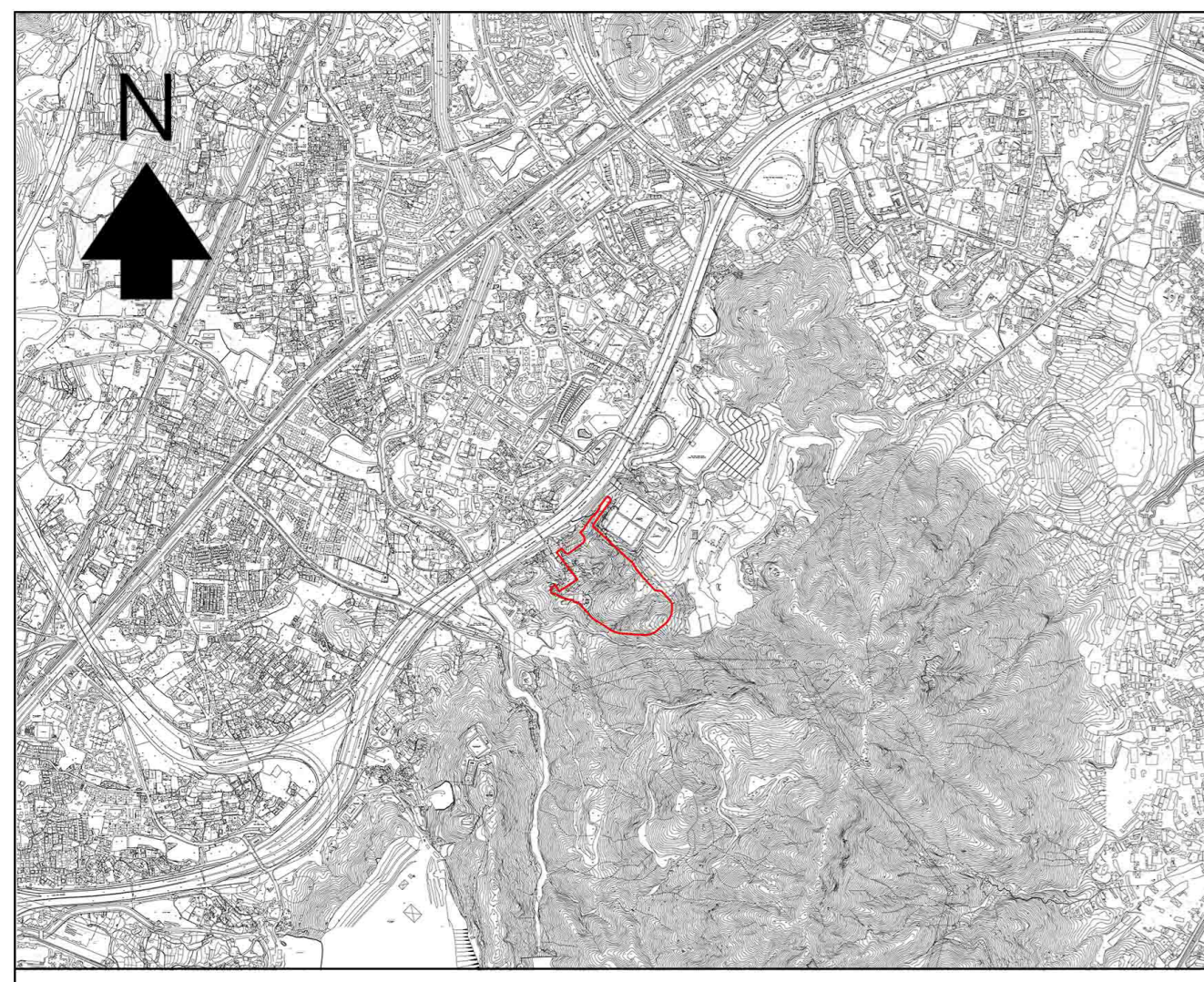


LCA1 - Sub-urban Fringe Landscape

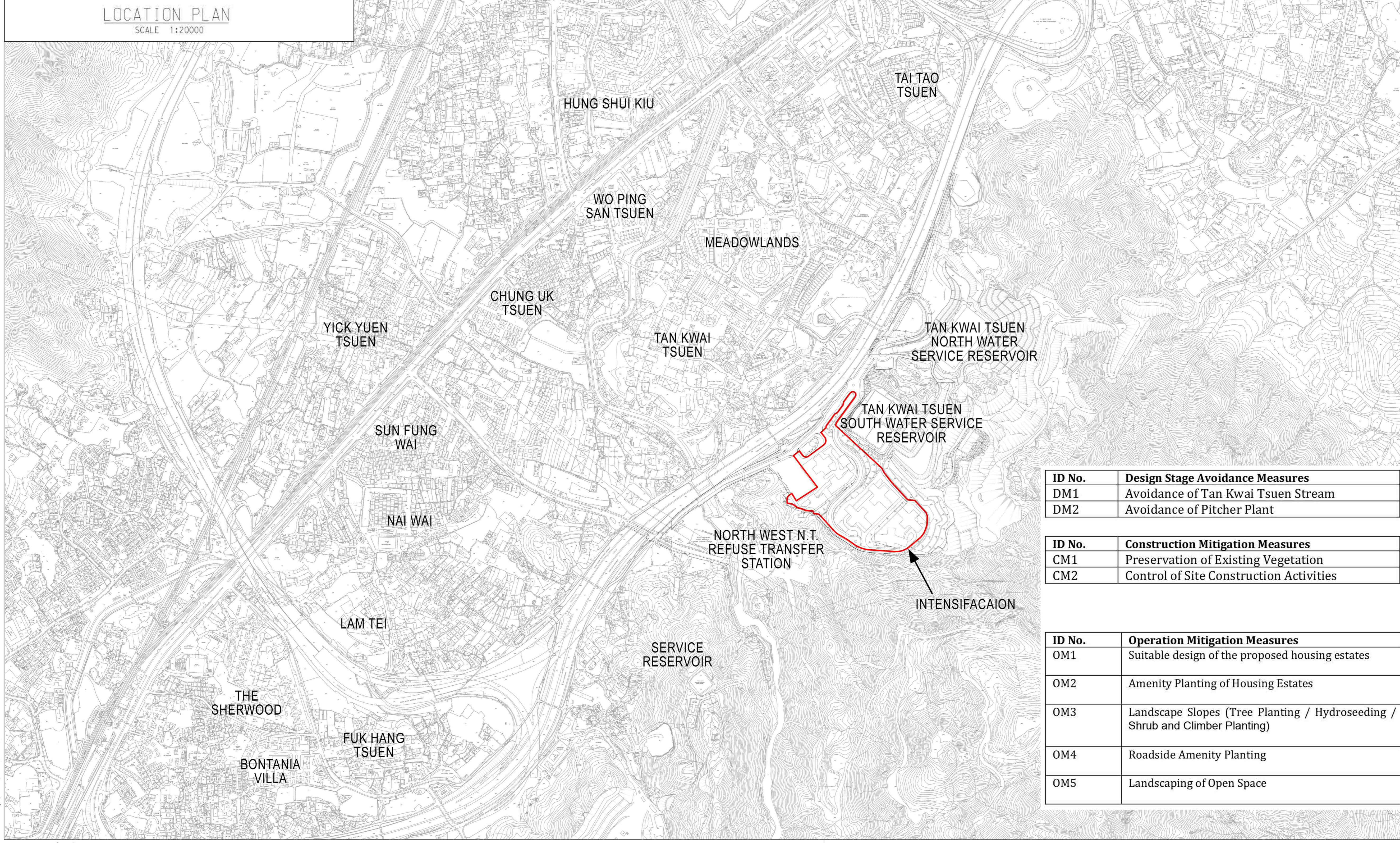



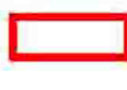

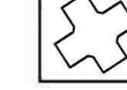
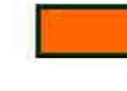





LCA2 – Hillside Landscape

Figure 2.6 Photos of Landscape Character Areas

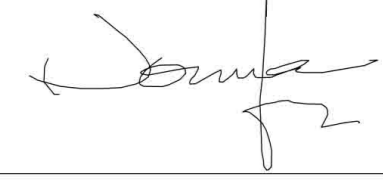


LOCATION PLAN
SCALE 1:20000



- LEGEND:**
-  PRELIMINARY LANDSCAPE ASSESSMENT AREA
 -  POTENTIAL PUBLIC HOUSING SITE
 -  LOCATION OF OM1
 -  LOCATION OF OM1
 -  LOCATION OF OM2
 -  LOCATION OF OM3 (Tree Planting)
 -  LOCATION OF OM3 (Hydroseeding)
 -  LOCATION OF OM3 (Shrub and Climber Planting)
 -  LOCATION OF OM4
 -  LOCATION OF OM5

Revision	Date	Description	Initial
Initial	TCL	WLC	SZ
Date	06/22	06/22	06/22

Approved: 

Contract No. CV/2022/11

Contract Title
SITE FORMATION AND INFRASTRUCTURE WORKS NEAR TAN KWAI TSUEN IN YUEN LONG - CONTRACT 1

Drawing Title
RECOMMENDED MITIGATION MEASURES

Drawing No. FIGURE 2.7

Scale

 土木工程拓展署
Civil Engineering and Development Department

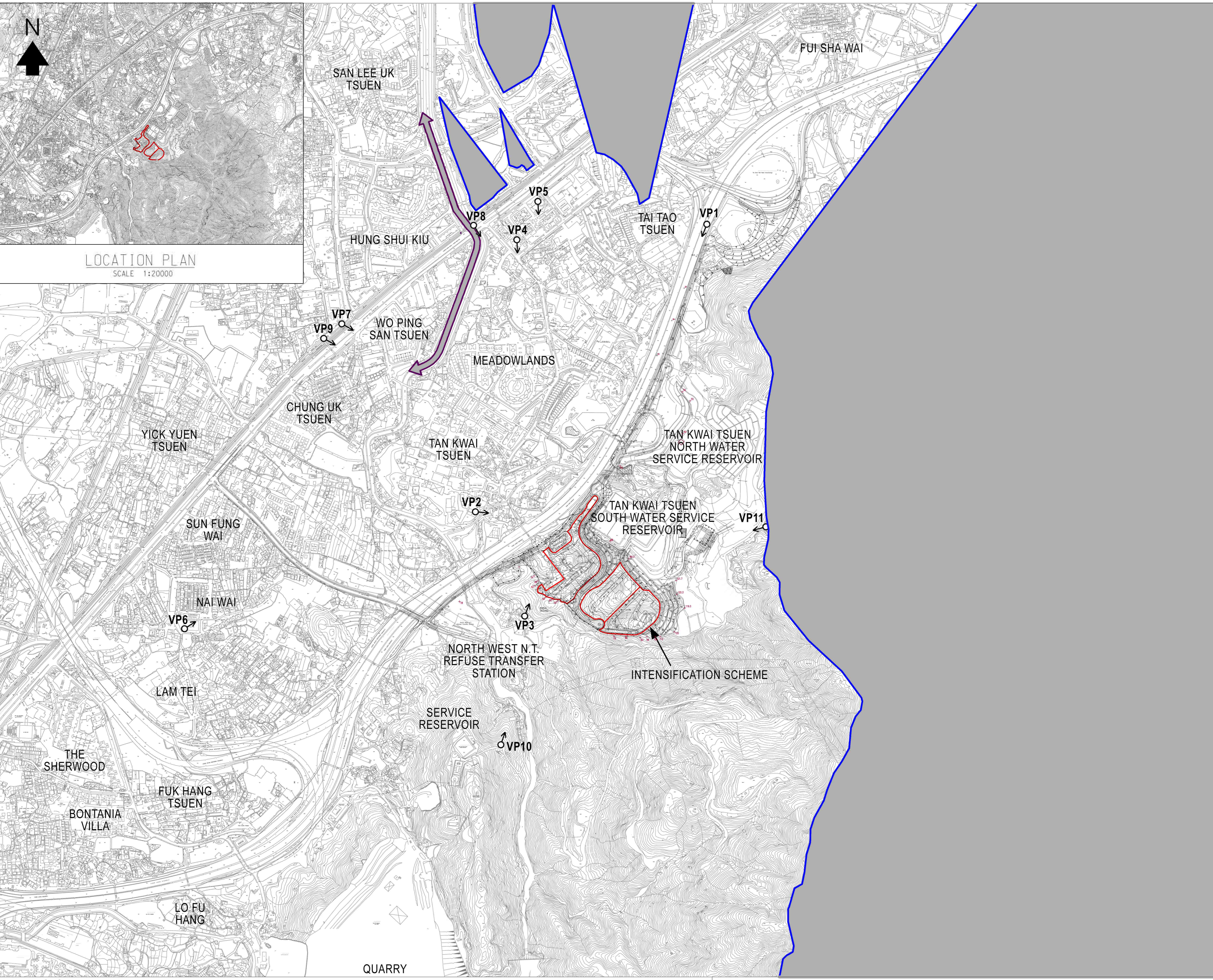

BINNIES HONG KONG LIMITED
賓尼士工程顧問有限公司

ID No.	Design Stage Avoidance Measures
DM1	Avoidance of Tan Kwai Tsuen Stream
DM2	Avoidance of Pitcher Plant

ID No.	Construction Mitigation Measures
CM1	Preservation of Existing Vegetation
CM2	Control of Site Construction Activities

ID No.	Operation Mitigation Measures
OM1	Suitable design of the proposed housing estates
OM2	Amenity Planting of Housing Estates
OM3	Landscape Slopes (Tree Planting / Hydroseeding / Shrub and Climber Planting)
OM4	Roadside Amenity Planting
OM5	Landscaping of Open Space

- LEGEND:**
- POTENTIAL PUBLIC HOUSING SITE
 - ZONE OF VISUAL INFLUENCE (ZVI)
 - AREA OUTSIDE ZVI
 - VISUALLY SENSITIVE RECEIVERS (VSRs)
 - VIEW CORRIDOR



LOCATION PLAN
SCALE 1:20000

Revision	Date	Description	Initial
Initial	TCL	WLC	SZ
Date	06/22	06/22	06/22

Approved:

Contract No: CV/2022/11

Contract Title:
SITE FORMATION AND INFRASTRUCTURE WORKS NEAR TAN KWAI TSUEN IN YUEN LONG - CONTRACT 1

Drawing Title:
PLAN OF ZONE OF VISUAL INFLUENCE AND VISUALLY SENSITIVE RECEIVERS

Drawing No: **FIGURE 3.1**

Scale:

土木工程拓展署
CEDD Civil Engineering and Development Department

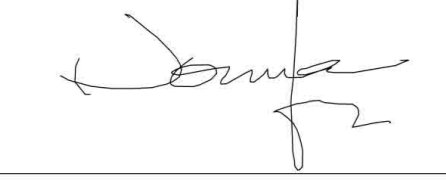
binnies
BINNIES HONG KONG LIMITED
賓尼士工程顧問有限公司

- LEGEND:**
- POTENTIAL PUBLIC HOUSING SITE
 - ZONE OF VISUAL INFLUENCE (ZVI)
 - AREA OUTSIDE ZVI



Revision	Date	Description	Initial
Initial	TCL	WLC	SZ
Date	06/22	06/22	06/22

Approved



Contract No. CV/2022/11

Contract Title
SITE FORMATION AND INFRASTRUCTURE WORKS NEAR TAN KWAI TSUEN IN YUEN LONG - CONTRACT 1

Drawing Title
EXISTING VISUAL CONDITIONS

Drawing No. **FIGURE 3.1a** Revision

Scale

CEDD 土木工程拓展署
Civil Engineering and Development Department

binnes
BINNIES HONG KONG LIMITED
賓尼士工程顧問有限公司



Existing View



Photomontage (Conforming Scheme) with Mitigation Measures



Photomontage (Intensified Scheme) without Mitigation Measures



Photomontage (Intensified Scheme) with Mitigation Measures

Figure 3.2.a Photomontage of Visually Sensitive Receiver VP1 (Road Users of Yuen Long Highway)



Existing View



Photomontage (Conforming Scheme) with Mitigation Measures



Photomontage (Intensified Scheme) without Mitigation Measures



Photomontage (Intensified Scheme) with Mitigation Measures

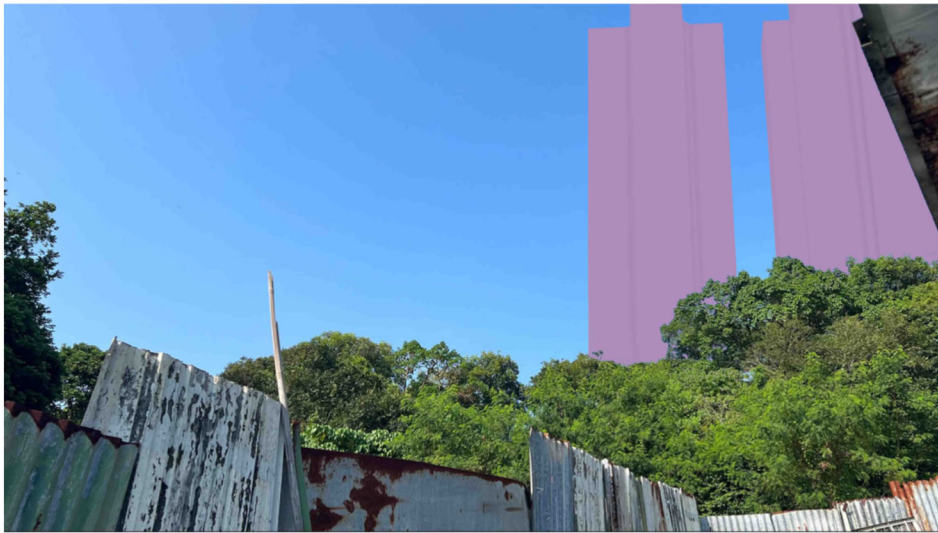
Figure 3.2.b Photomontage of Visually Sensitive Receiver VP2 Villagers west of Yuen Long Highway



Existing View



Photomontage (Conforming Scheme) with Mitigation Measures



Photomontage (Intensified Scheme) without Mitigation Measures



Photomontage (Intensified Scheme) with Mitigation Measures

Figure 3.2.c Photomontage of Visually Sensitive Receiver VP3 Villagers east of Yuen Long Highway



Existing View



Photomontage (Conforming Scheme) with Mitigation Measures



Photomontage (Intensified Scheme) without Mitigation Measures



Photomontage (Intensified Scheme) with Mitigation Measures

Figure 3.2.d Photomontage of Visually Sensitive Receiver VP4 Public Users of Tan Kwai Tsuen Road Garden