

28 January 2022

HONG KONG SOLAR MANUFACTURING LIMITED  
4 3/F  
CARDINAL INDUSTRIAL BUILDING  
17 ON LOK MUN STREET  
FANLING**Attention:** HONG KONG SOLAR MANUFACTURING LIMITEDCLP Electricity : 82856455573  
Account Number

Application No. : 92000025677

*Please quote our application number whenever you correspond with us about this application*

Dear HONG KONG SOLAR MANUFACTURING LIMITED,

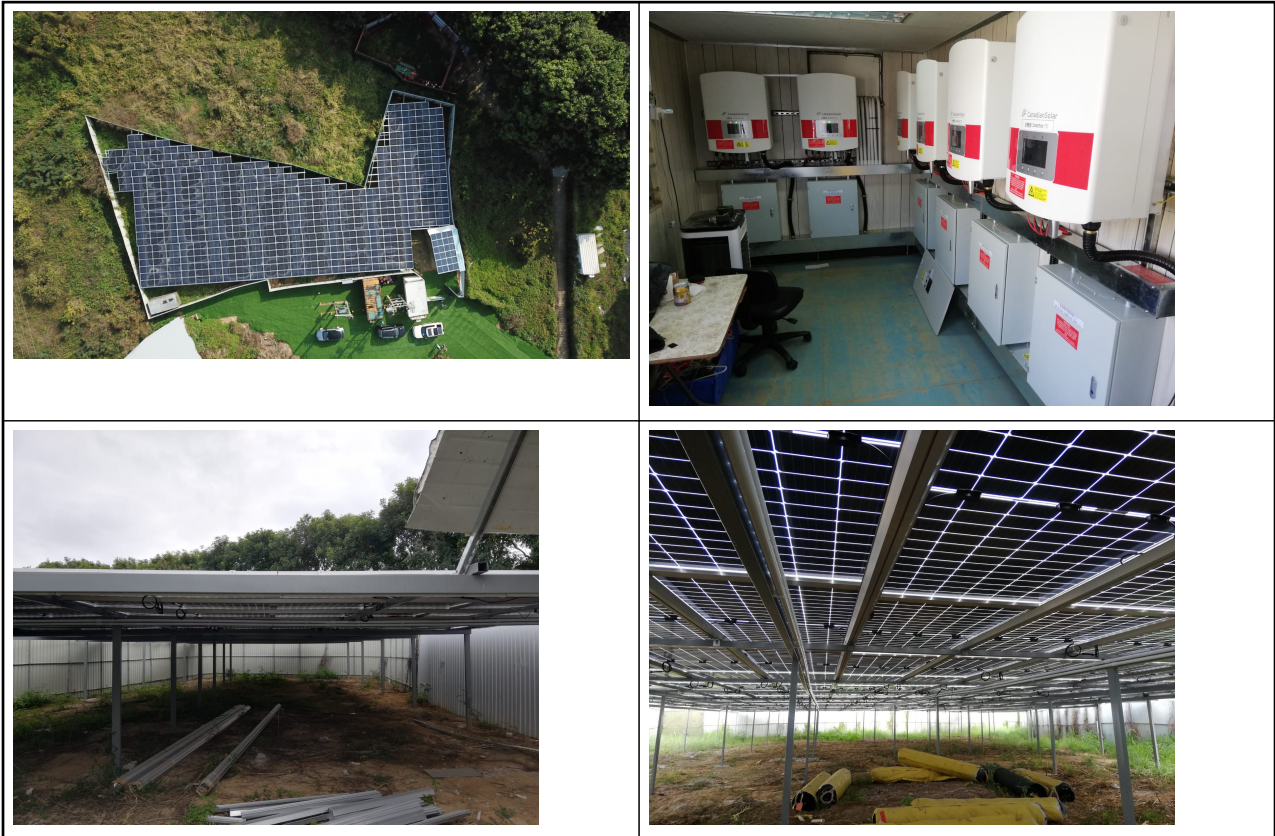
**CLP Renewable Energy Feed-in Tariff (FiT) Scheme – Completion Letter****Renewable Energy RE System with a Total Generation Capacity of 170.00 kW at G/F, DD 119 LOT 2061, MUK KIU TAU TSUEN, SHAP PAT HEUNG YUEN LONG with Customer Main Switch Rating > 100 A**

Thank you once again for your support for the CLP Renewable Energy Feed-in Tariff (FiT) Scheme. We are pleased to inform you that the RE system at the above address shown in Figure 1 below will be connected to the CLP grid with effect from the commencement date as follows.

The following table indicates the FiT rate applicable from the commencement date throughout the useful life of the renewable energy system up to 31 December 2033, subject to the FiT Scheme Terms and Conditions.

<b>RE system at the above address under your FiT Agreement</b>	<b>Generation capacity (kW)</b>	<b>FiT rate (\$/kWh)</b>	<b>Commencement date</b>
New solar system at G/F, DD 119 LOT 2061, MUK KIU TAU TSUEN, SHAP PAT HEUNG YUEN LONG, NEW TERRITORIES	170.00 (Three-phase)	4.00	26 January 2022

Figure 1 - As-built site photos of RE system structure/equipment taken on 26 January 2022



Please be reminded that the design, installation, operation and maintenance of the RE system should comply with all applicable laws, regulations, guidelines, and safety and technical requirements. This includes compliance with the requirements set out under the Technical Guidelines on Grid Connection of Renewable Energy Power Systems and the Guidance Notes for Solar Photovoltaic (PV) System Installation, both issued by the Electrical and Mechanical Services Department (“EMSD”).

You should not make any changes to the RE system, including changes to its capacity, without prior written approval from CLP. If you wish to increase the capacity of the RE system, you can do so by submitting a new application.

We would also like to remind you that, according to the FiT Scheme Terms and Conditions, all the electricity generated by the RE system under the Scheme will be sold to CLP and Scheme participants are restricted in claiming emissions reduction benefits that may arise from the RE system. Scheme participants who wish to claim emissions reduction benefits may consider purchasing CLP Renewable Energy Certificates. Please contact your Account Manager for details.

If you have any questions, please do not hesitate to contact your Account Manager, Lam, Hon Sing on 26783406.

Yours sincerely,

**CLP Power Hong Kong Limited**

Note: This is a computer printout letter that requires no signature.