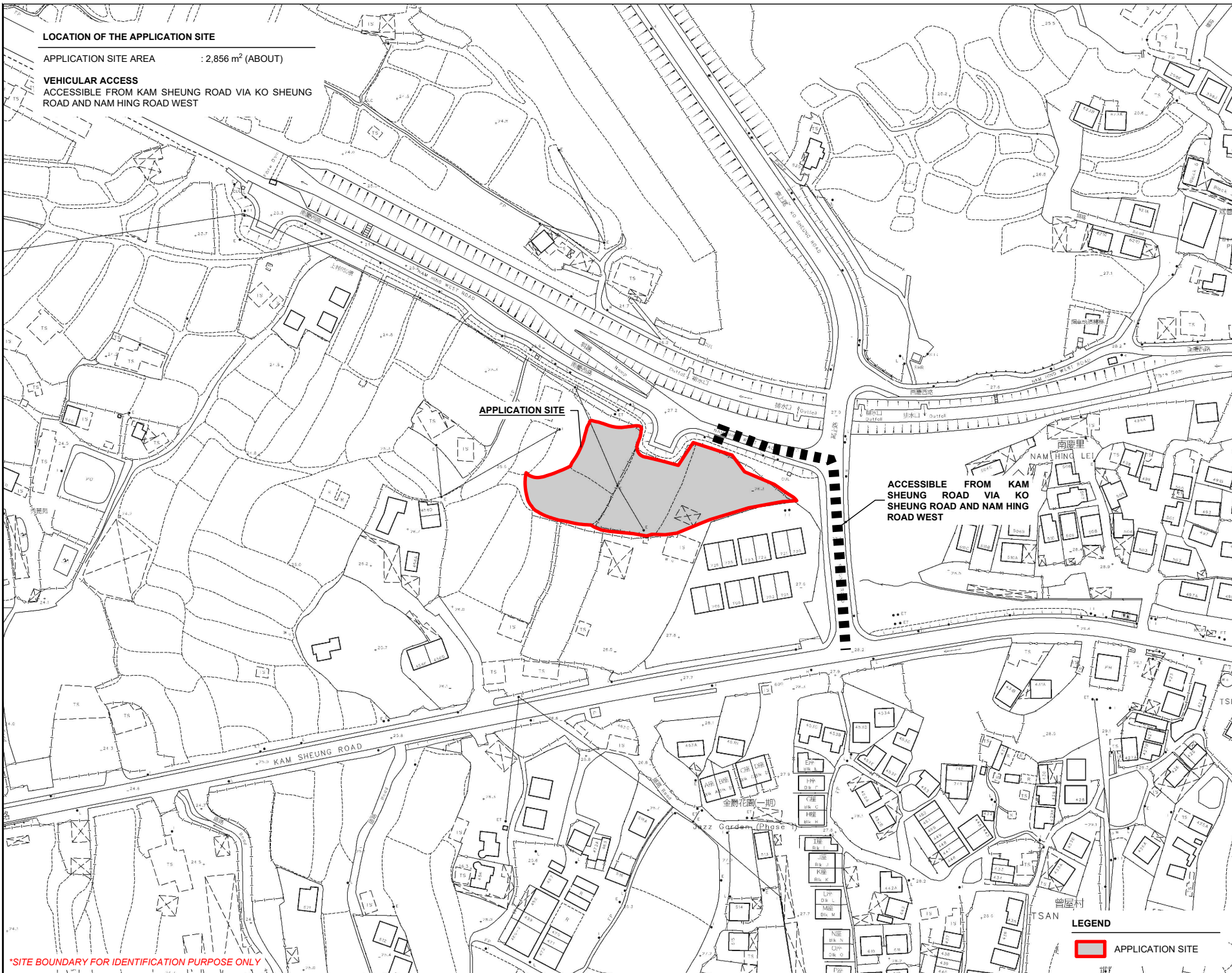
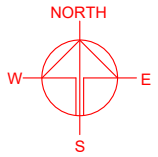


LOCATION OF THE APPLICATION SITE

APPLICATION SITE AREA : 2,856 m² (ABOUT)

VEHICULAR ACCESS

ACCESSIBLE FROM KAM SHEUNG ROAD VIA KO SHEUNG ROAD AND NAM HING ROAD WEST



APPLICATION SITE

ACCESSIBLE FROM KAM SHEUNG ROAD VIA KO SHEUNG ROAD AND NAM HING ROAD WEST

PLANNING CONSULTANT



PROJECT

PROPOSED TEMPORARY PLACE OF RECREATION, SPORTS OR CULTURE WITH ANCILLARY FACILITIES FOR A PERIOD OF 3 YEARS AND ASSOCIATED FILLING OF LAND

SITE LOCATION

VARIOUS LOTS IN D.D. 112, SHEK KONG, YUEN LONG, NEW TERRITORIES

SCALE
1:2000 @ A4

DRAWN BY: MN DATE: 1.2.2024

REVISED BY: DATE:

APPROVED BY: DATE:

DWG. TITLE
LOCATION PLAN

DWG NO.: PLAN 1 VER.: 001

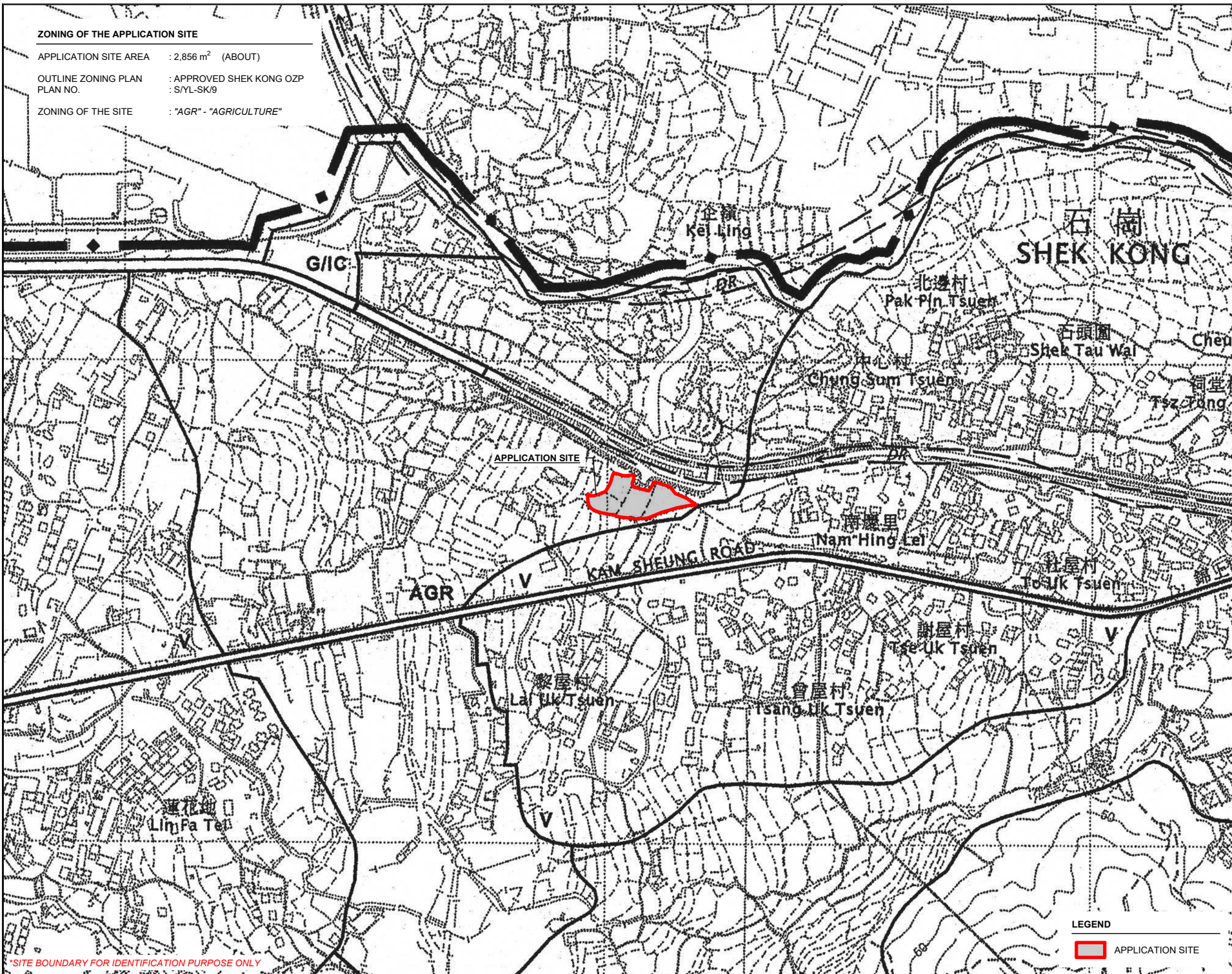
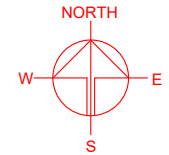
LEGEND

APPLICATION SITE

*SITE BOUNDARY FOR IDENTIFICATION PURPOSE ONLY

ZONING OF THE APPLICATION SITE

APPLICATION SITE AREA : 2,856 m² (ABOUT)
 OUTLINE ZONING PLAN : APPROVED SHEK KONG OZP
 PLAN NO. : S/YL-SK/9
 ZONING OF THE SITE : "AGR" - "AGRICULTURE"



*SITE BOUNDARY FOR IDENTIFICATION PURPOSE ONLY

PLANNING CONSULTANT



PROJECT

PROPOSED TEMPORARY PLACE OF RECREATION, SPORTS OR CULTURE WITH ANCILLARY FACILITIES FOR A PERIOD OF 3 YEARS AND ASSOCIATED FILLING OF LAND

SITE LOCATION

VARIOUS LOTS IN D.D. 112, SHEK KONG, YUEN LONG, NEW TERRITORIES

SCALE
1 : 5000 @ A4

DRAWN BY: MN DATE: 1.2.2024

REVISED BY: DATE:

APPROVED BY: DATE:

DWG. TITLE
ZONING OF THE SITE

DWG. NO. : PLAN 2 VER. : 001

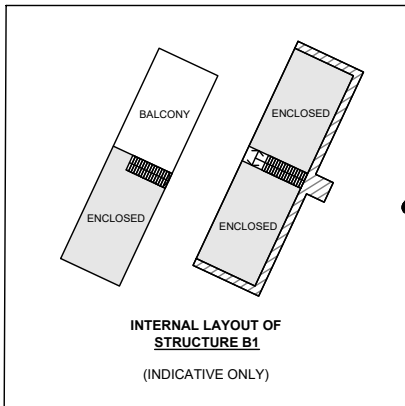
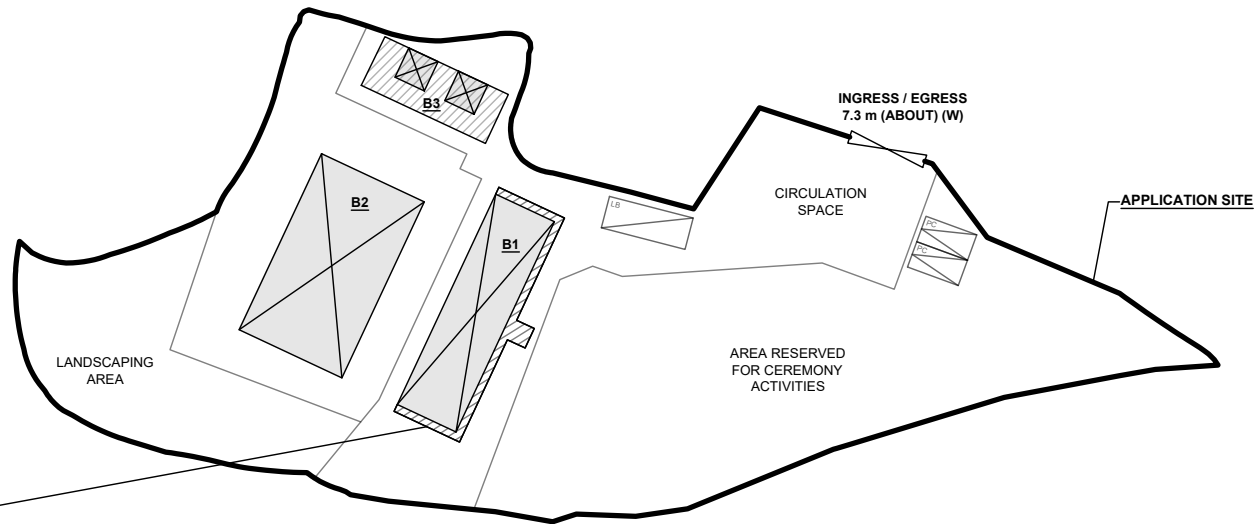
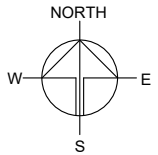
LEGEND
 APPLICATION SITE

DEVELOPMENT PARAMETERS

APPLICATION SITE AREA	: 2,856 m ²	(ABOUT)
COVERED AREA	: 409 m ²	(ABOUT)
UNCOVERED AREA	: 2,447 m ²	(ABOUT)
PLOT RATIO	: 0.16	(ABOUT)
SITE COVERAGE	: 14 %	(ABOUT)
NO. OF STRUCTURE	: 3	
DOMESTIC GFA	: NOT APPLICABLE	
NON-DOMESTIC GFA	: 472 m ²	(ABOUT)
TOTAL GFA	: 472 m ²	(ABOUT)
BUILDING HEIGHT	: 3 m - 7 m	(ABOUT)
NO. OF STOREY	: 1 - 2	

STRUCTURE	USE	COVERED AREA	GFA	BUILDING HEIGHT
B1	ACTIVITY ROOM, WASHROOM, SITE OFFICE AND STORE ROOM	157 m ² (ABOUT)#	220 m ² (ABOUT)#	7 m (ABOUT)(2-STOREY)
B2	ACTIVITY ROOM*	189 m ² (ABOUT)	189 m ² (ABOUT)	4 m (ABOUT)(1-STOREY)
B3	RAIN SHELTER, WASHROOM AND STORE ROOM	63 m ² (ABOUT)	63 m ² (ABOUT)	3 m (ABOUT)(1-STOREY)
TOTAL		409 m² (ABOUT)	472 m² (ABOUT)	

*STRUCTURE B2 IS A RETRACTABLE MARQUEE
 #GFA OF STRUCTURE B1 - 157m² (G/F) + 63 m² (1/F) = 220m²



PARKING AND LOADING / UNLOADING PROVISIONS

NO. OF PRIVATE CAR PARKING SPACE	: 2
DIMENSION OF PARKING SPACE	: 5 m (L) x 2.5 m (W)
NO. OF L/UL SPACE FOR LIGHT BUS / LIGHT GOODS VEHICLE	: 1
DIMENSION OF L/UL SPACE	: 8 m (L) x 3.5 m (W)

LEGEND

- APPLICATION SITE
- STRUCTURE (ENCLOSED)
- STRUCTURE (NOT ENCLOSED)
- PARKING SPACE (PC)
- LOADING / UNLOADING SPACE (LB / LGV)
- INGRESS / EGRESS

PLANNING CONSULTANT



PROJECT

PROPOSED TEMPORARY PLACE OF RECREATION, SPORTS OR CULTURE WITH ANCILLARY FACILITIES FOR A PERIOD OF 3 YEARS AND ASSOCIATED FILLING OF LAND

SITE LOCATION

VARIOUS LOTS IN D.D. 112, SHEK KONG, YUEN LONG, NEW TERRITORIES

SCALE

1 : 700 @ A4

DRAWN BY	DATE
MN	1.2.2024

REVISED BY	DATE

APPROVED BY	DATE

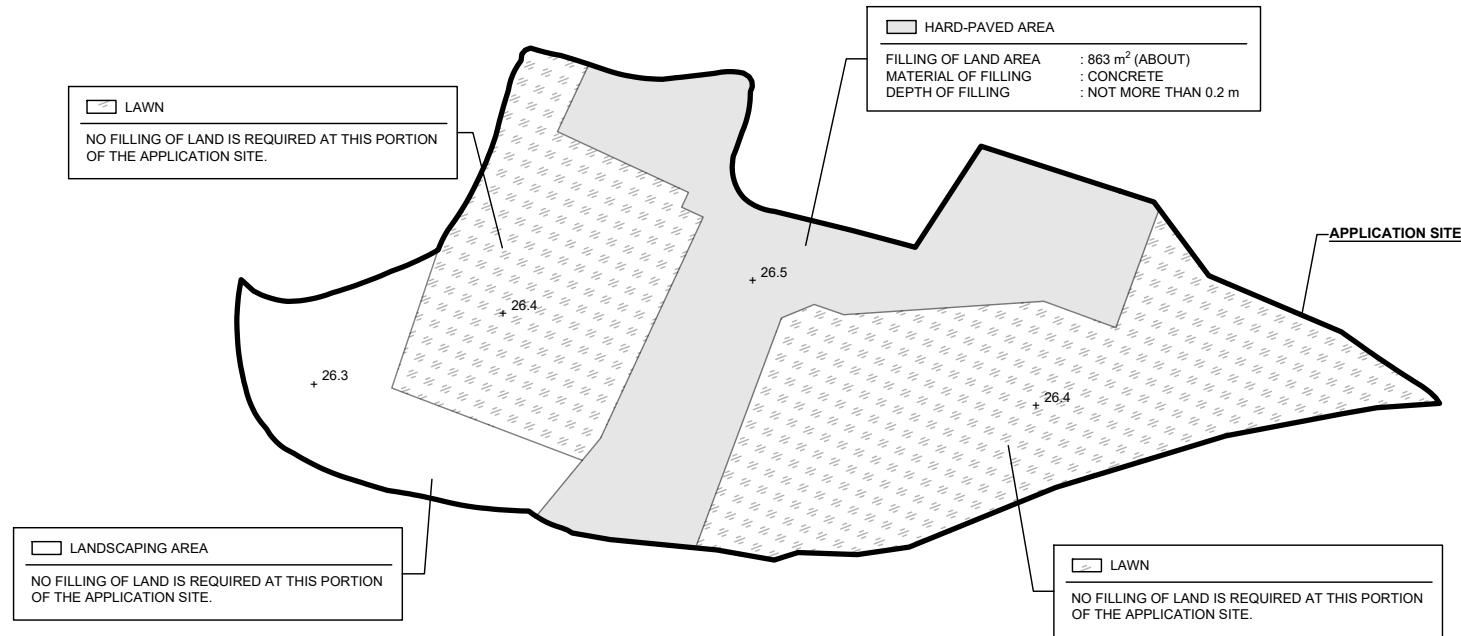
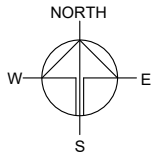
DWG. TITLE
LAYOUT PLAN

DWG NO.	VER.
PLAN 4	001

PAVED RATIO OF THE APPLICATION SITE

APPLICATION SITE AREA	: 2,856 m ²	(ABOUT)
COVERED BY STRUCTURE	: 409 m ²	(ABOUT)
EXISTING HARD-PAVED AREA	: 863 m ²	(ABOUT)
DEPTH OF LAND FILLING	: NOT MORE THAN 0.2 m	
EXISTING SITE LEVELS	: +26.5 mPD (ABOUT)	
MATERIAL OF LAND FILLING	: CONCRETE	
USE	: SITE FORMATION OF STRUCTURES, AND CIRCULATION SPACE	
EXISTING LAWN AREA	: 1,623 m ²	(ABOUT)
EXISTING LANDSCAPING AREA	: 370 m ²	(ABOUT)

*NO FURTHER FILLING OF LAND WILL BE CARRIED OUT AT THE APPLICATION SITE AFTER PLANNING APPROVAL HAS BEEN GRANTED FROM THE TOWN PLANNING BOARD.



SITE LEVELS ARE FOR REFERENCE ONLY.

LEGEND

- APPLICATION SITE
- LAND FILLING AREA
- +3.4 SITE LEVEL

PLANNING CONSULTANT



PROJECT

PROPOSED TEMPORARY PLACE OF RECREATION, SPORTS OR CULTURE WITH ANCILLARY FACILITIES FOR A PERIOD OF 3 YEARS AND ASSOCIATED FILLING OF LAND

SITE LOCATION

VARIOUS LOTS IN D.D. 112, SHEK KONG, YUEN LONG, NEW TERRITORIES

SCALE

1 : 700 @ A4

DRAWN BY	DATE
MN	1.2.2024

REVISED BY	DATE

APPROVED BY	DATE

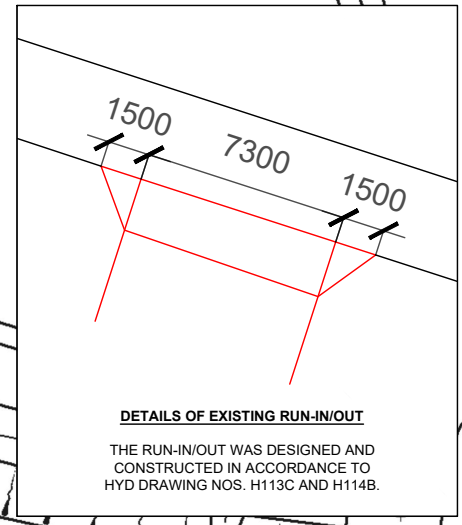
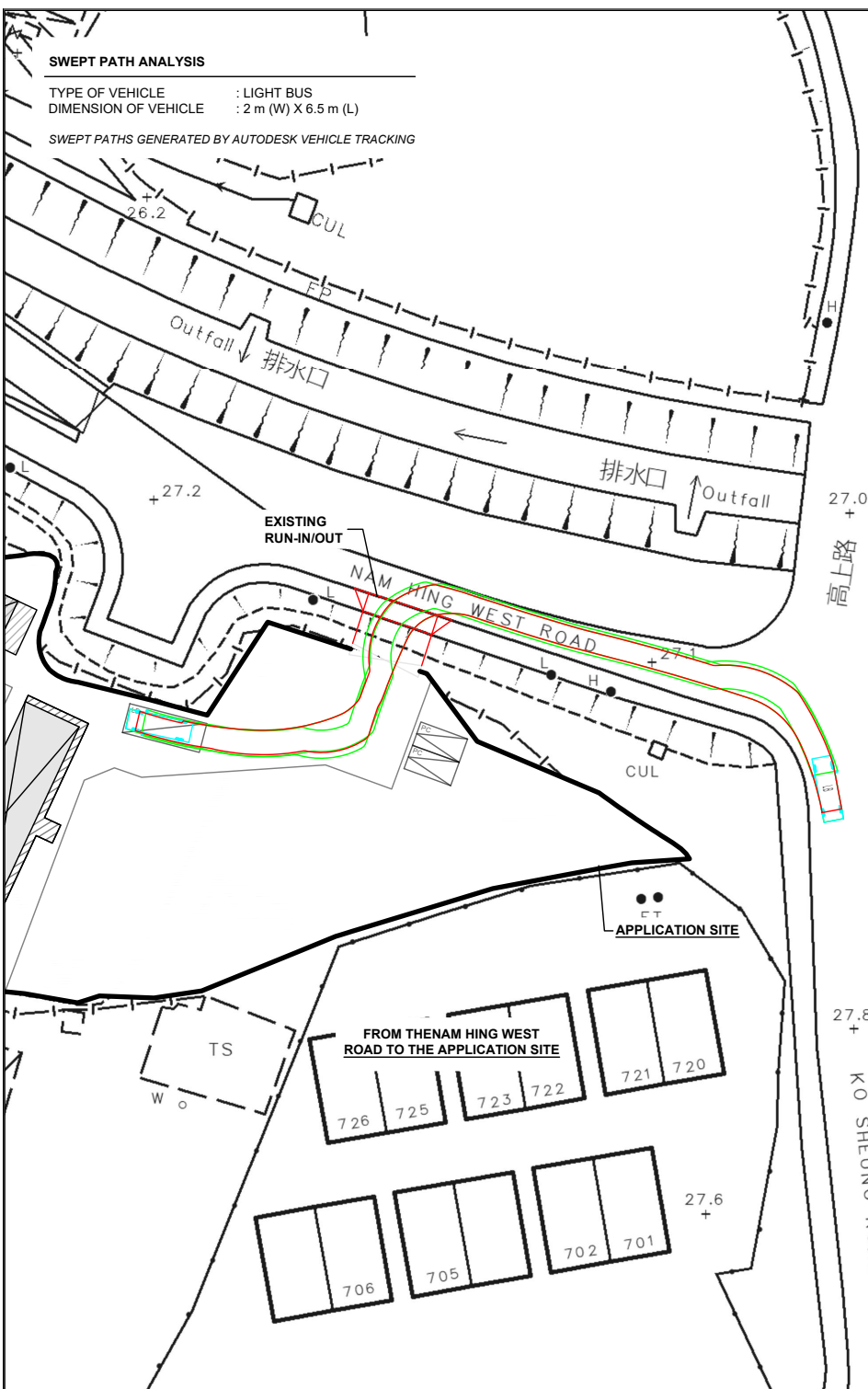
DWG. TITLE
FILLING OF LAND

DWG NO.	VER.
PLAN 5	001

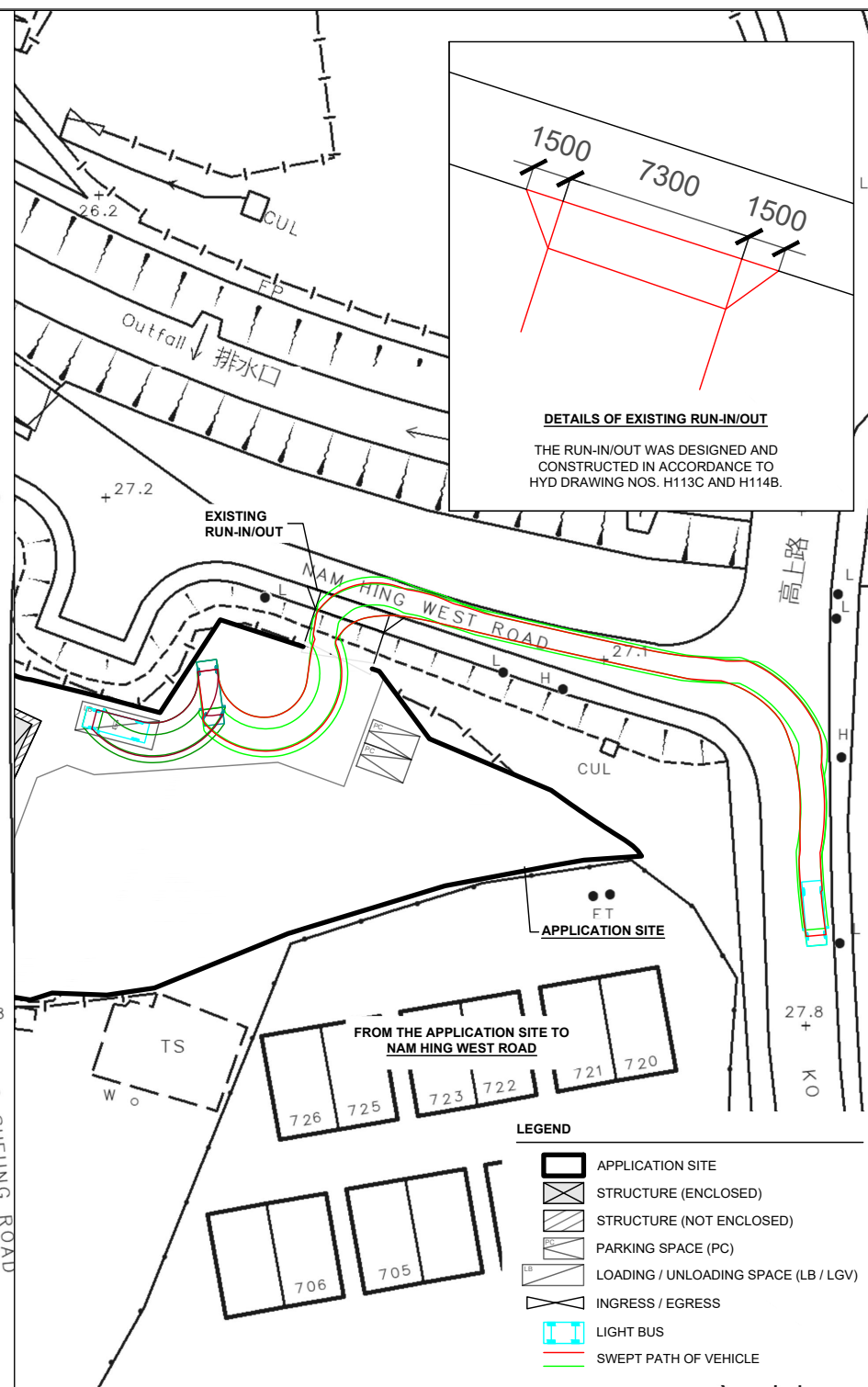
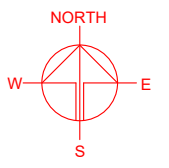
SWEPT PATH ANALYSIS

TYPE OF VEHICLE : LIGHT BUS
 DIMENSION OF VEHICLE : 2 m (W) X 6.5 m (L)

SWEPT PATHS GENERATED BY AUTODESK VEHICLE TRACKING



DETAILS OF EXISTING RUN-IN/OUT
 THE RUN-IN/OUT WAS DESIGNED AND CONSTRUCTED IN ACCORDANCE TO HYD DRAWING NOS. H113C AND H114B.



LEGEND

- APPLICATION SITE
- STRUCTURE (ENCLOSED)
- STRUCTURE (NOT ENCLOSED)
- PARKING SPACE (PC)
- LOADING / UNLOADING SPACE (LB / LGV)
- INGRESS / EGRESS
- LIGHT BUS
- SWEEP PATH OF VEHICLE

PLANNING CONSULTANT



PROJECT

PROPOSED TEMPORARY PLACE OF RECREATION, SPORTS OR CULTURE WITH ANCILLARY FACILITIES FOR A PERIOD OF 3 YEARS AND ASSOCIATED FILLING OF LAND

SITE LOCATION

VARIOUS LOTS IN D.D. 112, SHEK KONG, YUEN LONG, NEW TERRITORIES

SCALE
 1: 700 @ A4

DRAWN BY: MN DATE: 1.2.2024

CHECKED BY: DATE:

APPROVED BY: DATE:

DWG. TITLE
 SWEPT PATH ANALYSIS

DWG. NO. PLAN 6 VER. 001