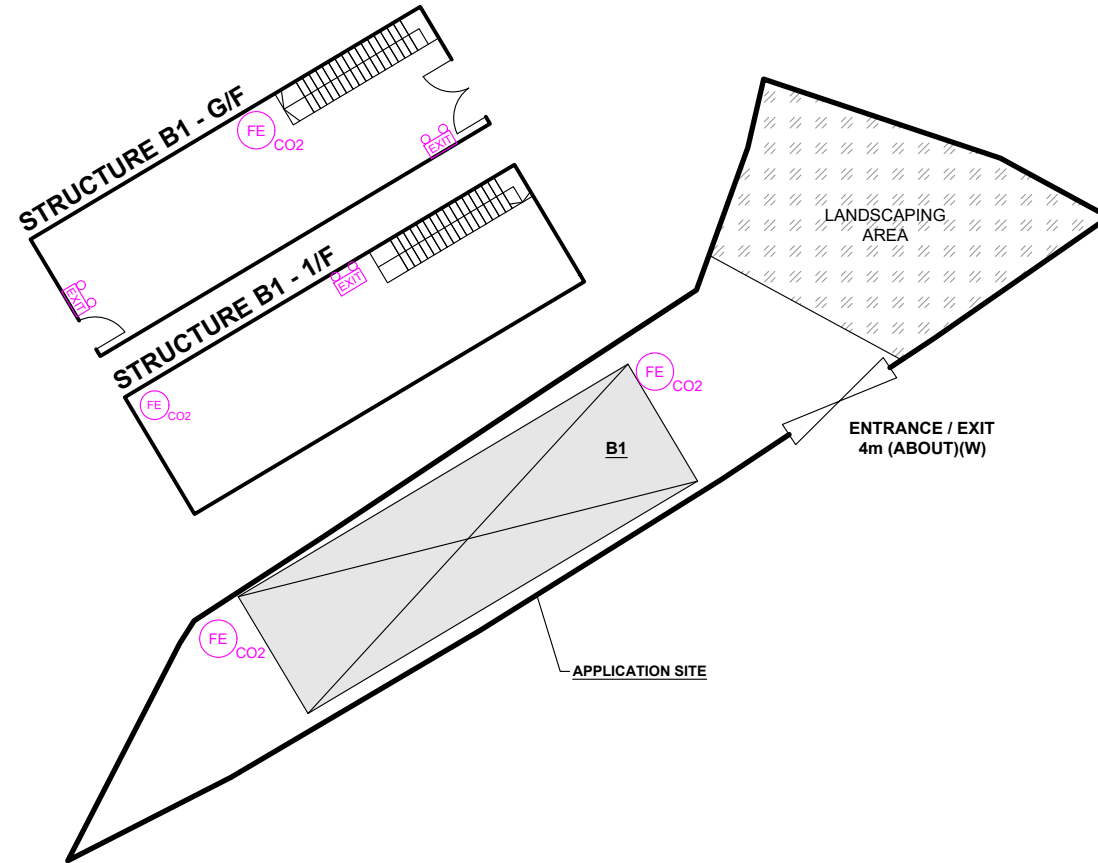
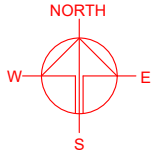




DEVELOPMENT PARAMETERS

APPLICATION SITE AREA	: 213 m ²	(ABOUT)
COVERED AREA	: 68 m ²	(ABOUT)
UNCOVERED AREA	: 145 m ²	(ABOUT)
PLOT RATIO	: 0.64	(ABOUT)
SITE COVERAGE	: 32 %	(ABOUT)
NO. OF STRUCTURE	: 1	
DOMESTIC GFA	: NOT APPLICABLE	
NON-DOMESTIC GFA	: 136 m ²	(ABOUT)
TOTAL GFA	: 136 m ²	(ABOUT)
BUILDING HEIGHT	: 6 m	(ABOUT)
NO. OF STOREY	: 2	

STRUCTURE	USE	COVERED AREA	GFA	BUILDING HEIGHT
B1 (G/F) (1/F)	SHOP AND SERVICES STORAGE OF DOCUMENT AND OFFICE	68m ² (ABOUT)	68m ² (ABOUT) 68m ² (ABOUT)	6m (ABOUT)(2-STOREY)
TOTAL		68m² (ABOUT)	136m² (ABOUT)	





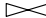
FIRE SERVICE INSTALLATIONS

-  3 x EXIT SIGN AND EMERGENCY LIGHT
-  4 x 4.5 KG GAS-TYPE FIRE EXTINGUISHER

FS NOTES:

1. SUFFICIENT EMERGENCY LIGHTING SHALL BE PROVIDED THROUGHOUT THE ENTIRE BUILDING IN ACCORDANCE WITH BS5266: PART1 AND BS EN1838
2. SUFFICIENT DIRECTIONAL AND EXIT SIGN SHALL BE PROVIDED IN ACCORDANCE WITH BS5266: PART 1 AND FSD CIRCULAR LETTER 5/2008.
3. PORTABLE HAND-OPERATED APPROVED APPLIANCE SHALL BE PROVIDED AS REQUIRED BY OCCUPANCY.
4. ACCESS IS PROVIDED FOR EMERGENCY VEHICLE TO REACH 30m OF ALL PART OF STRUCTURES.

LEGEND

-  APPLICATION SITE
-  STRUCTURE
-  ENTRANCE / EXIT

PLANNING CONSULTANT



PROJECT

PROPOSED TEMPORARY SHOP AND SERVICES FOR A PERIOD OF 3 YEARS

SITE LOCATION

LOT 1878 RP (PART) AND 1879 RP (PART) IN D.D. 106, PAT HEUNG, YUEN LONG, NEW TERRITORIES

SCALE

1 : 250 @ A4

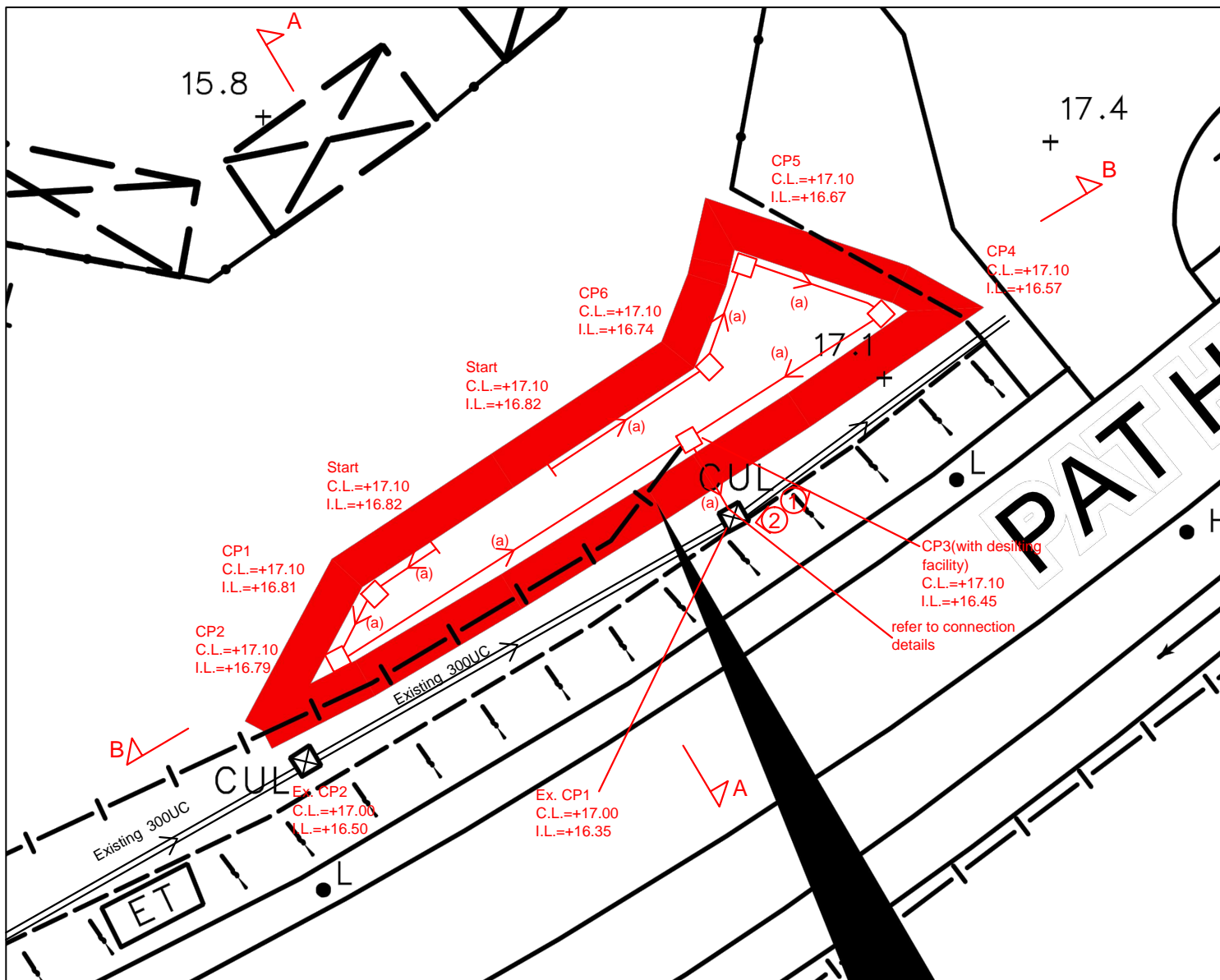
DRAWN BY: MN DATE: 23.11.2023

REVISED BY: DATE:

APPROVED BY: DATE:

DWG. TITLE
FSIs PROPOSAL

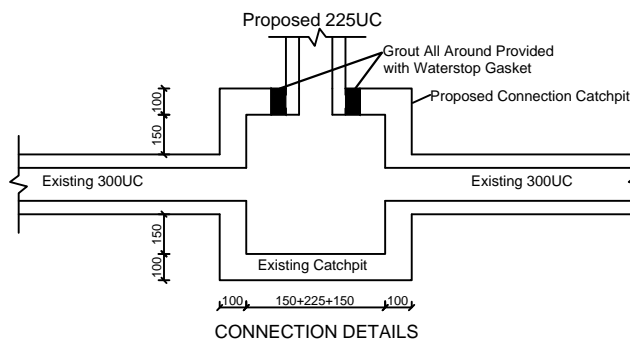
DWG NO. APPENDIX I VER. 001



SITE AREA = 213 SQ.M
 $Q = 0.278CiA$
 $= 0.278 \times 0.95 \times 250 \times 213 / 1000000$
 $= 0.014 \text{ M}^3/\text{S}$
 $= 844 \text{ lit}/\text{min}$
 PROVIDE 225UC (1:100) IS OK (FIG. 8.7)

Note:
 1. Catchpits (CP3) with desilting facility shall follow CEDD standard drawing No. C2406I.
 2. Catchpit and UC follows Typical Details of Geotechnical Manual for Slope Fig.8.10 and Fig.8.11 respectively.

- LEGEND**
- CP Proposed CatchPit
 - (a) Proposed 225UC (1:100) with Cast Iron Cover
 - CP Existing CatchPit
 - Existing 300UC
 - ① Photo Viewspot



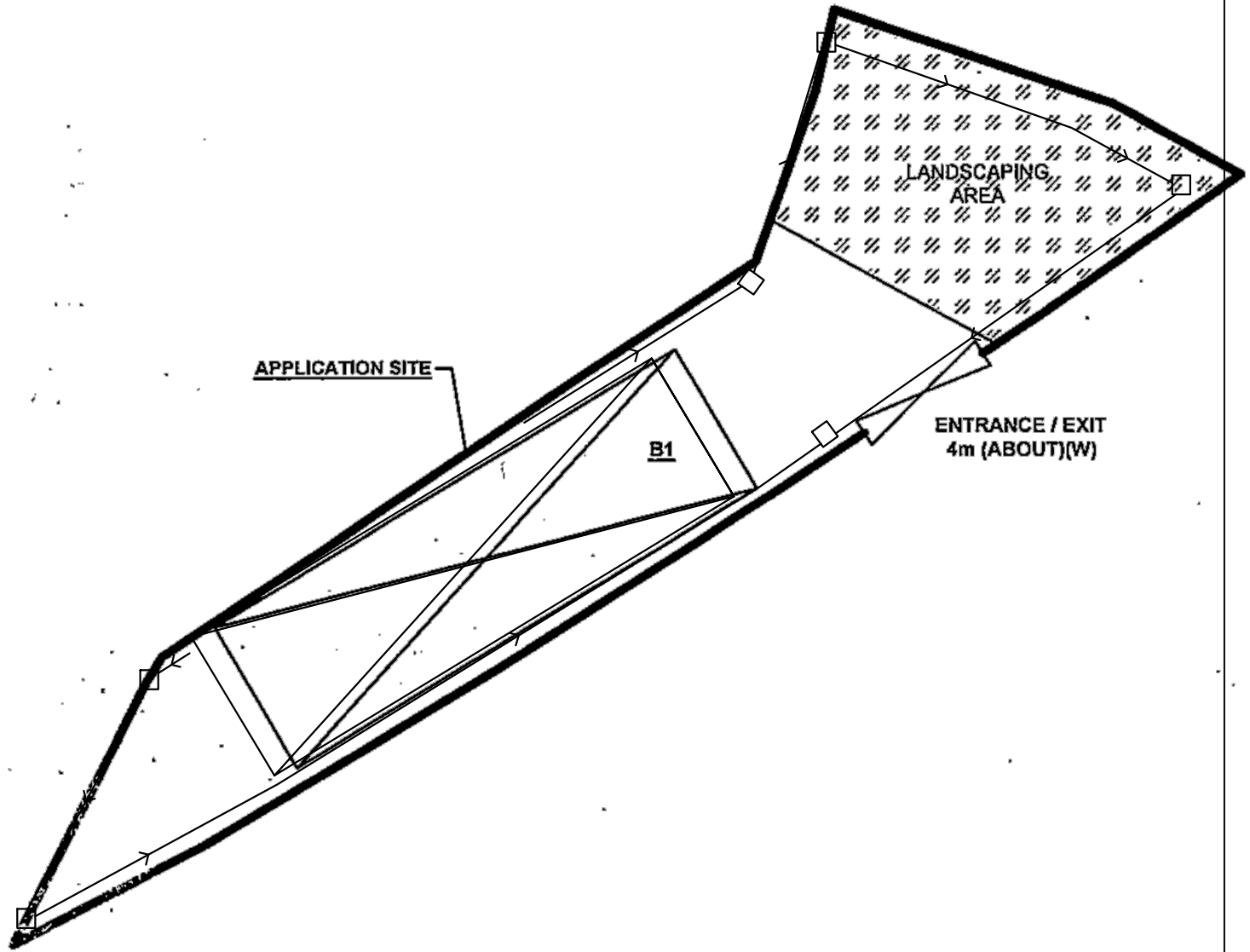
正宏工程顧問公司

CHING WAN ENGINEERING CONSULTANTS CO.

Project:
 Proposed Temporary Shop and Services for a Period of 3 Years at Lots 1878 RP (part) and 1879 RP (part) in D.D. 106, Kam Tin, Yuen Long, New Territories

Title:		D01	
Drainage Proposal			
Drawn by:	DM	Date:	30-11-2023
Check by:	DM	Scale:	----

(ABOUT)



正宏工程顧問公司

CHING WAN ENGINEERING CONSULTANTS CO.

Project:
Proposed Temporary Shop and Services for a Period of 3 Years at
Lots 1878 RP (part) and 1879 RP (part) in D.D. 106, Kam Tin, Yuen
Long, New Territories

Title:

Drainage Proposal
Proposed Site Layout (for reference)

D02

Drawn by:

DM

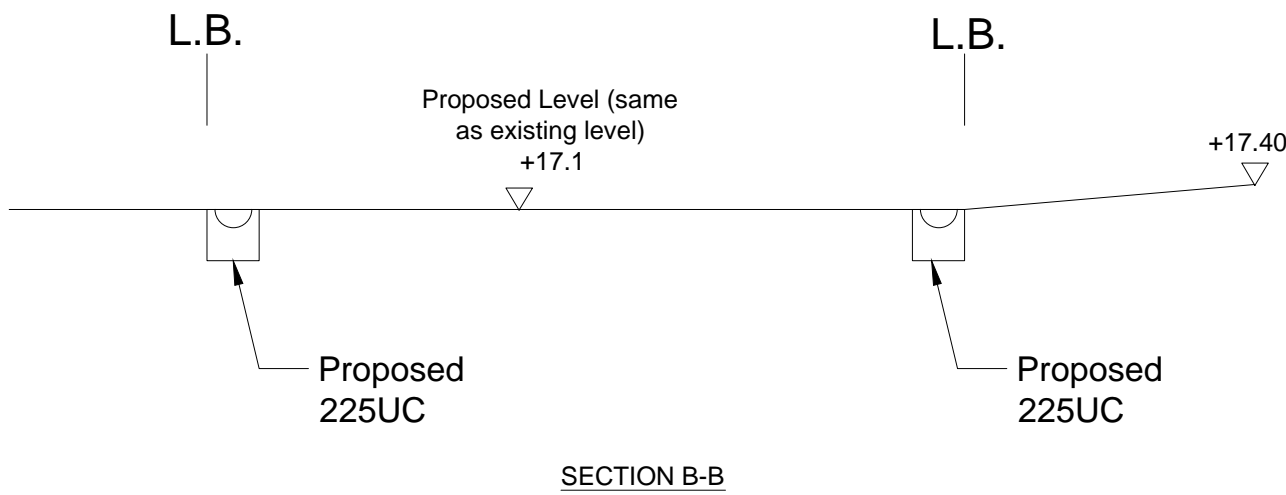
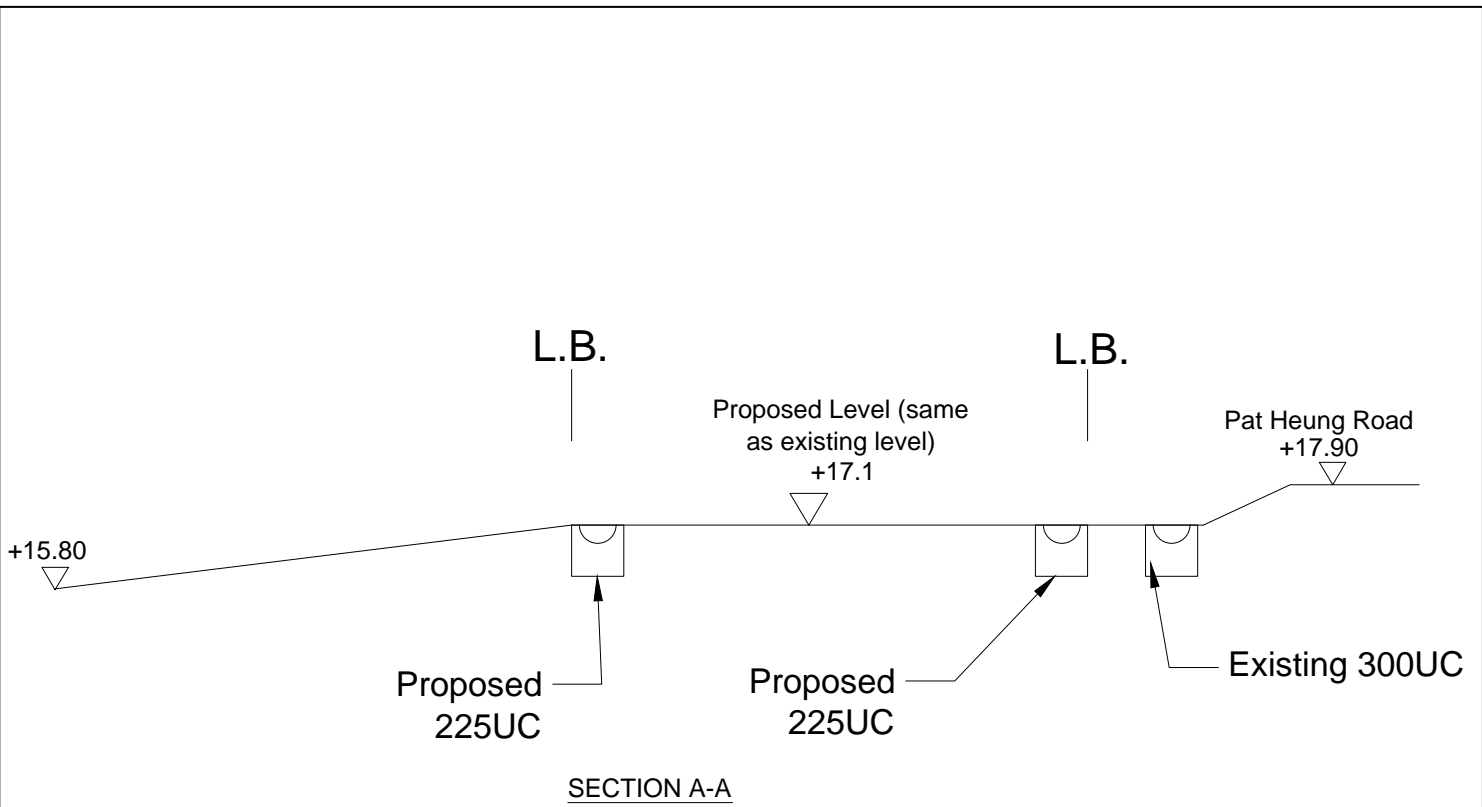
Date:

14-10-2022

Check by:

DM

Scale:



正宏工程顧問公司

CHING WAN ENGINEERING CONSULTANTS CO.

Project:
**Proposed Temporary Shop and Services for a Period of 3 Years at
 Lots 1878 RP (part) and 1879 RP (part) in D.D. 106, Kam Tin, Yuen
 Long, New Territories**

Title:

Drainage Proposal
 SECTIONS

D03

Drawn by:

DM

Date:

16-7-2023

Check by:

DM

Scale:

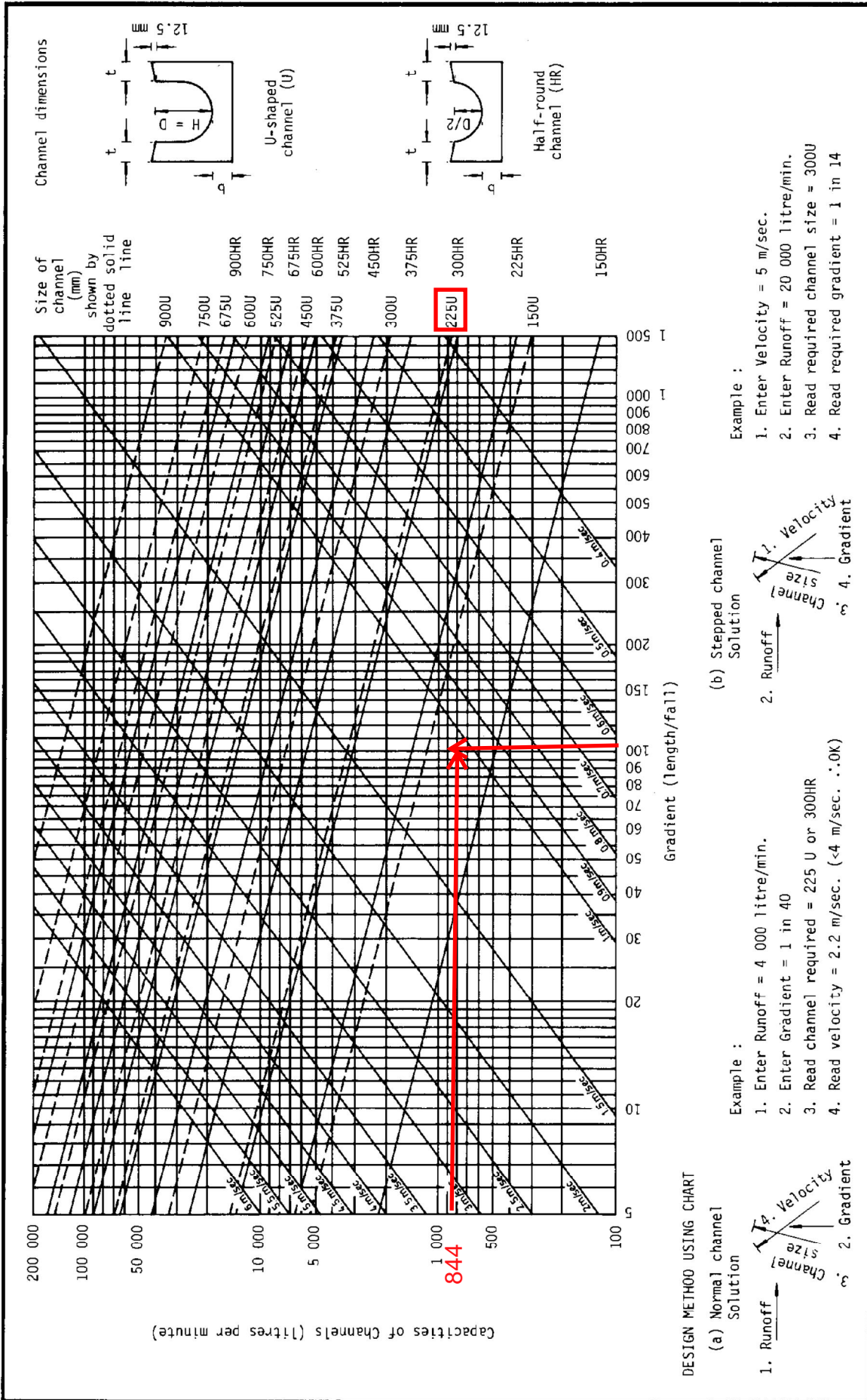
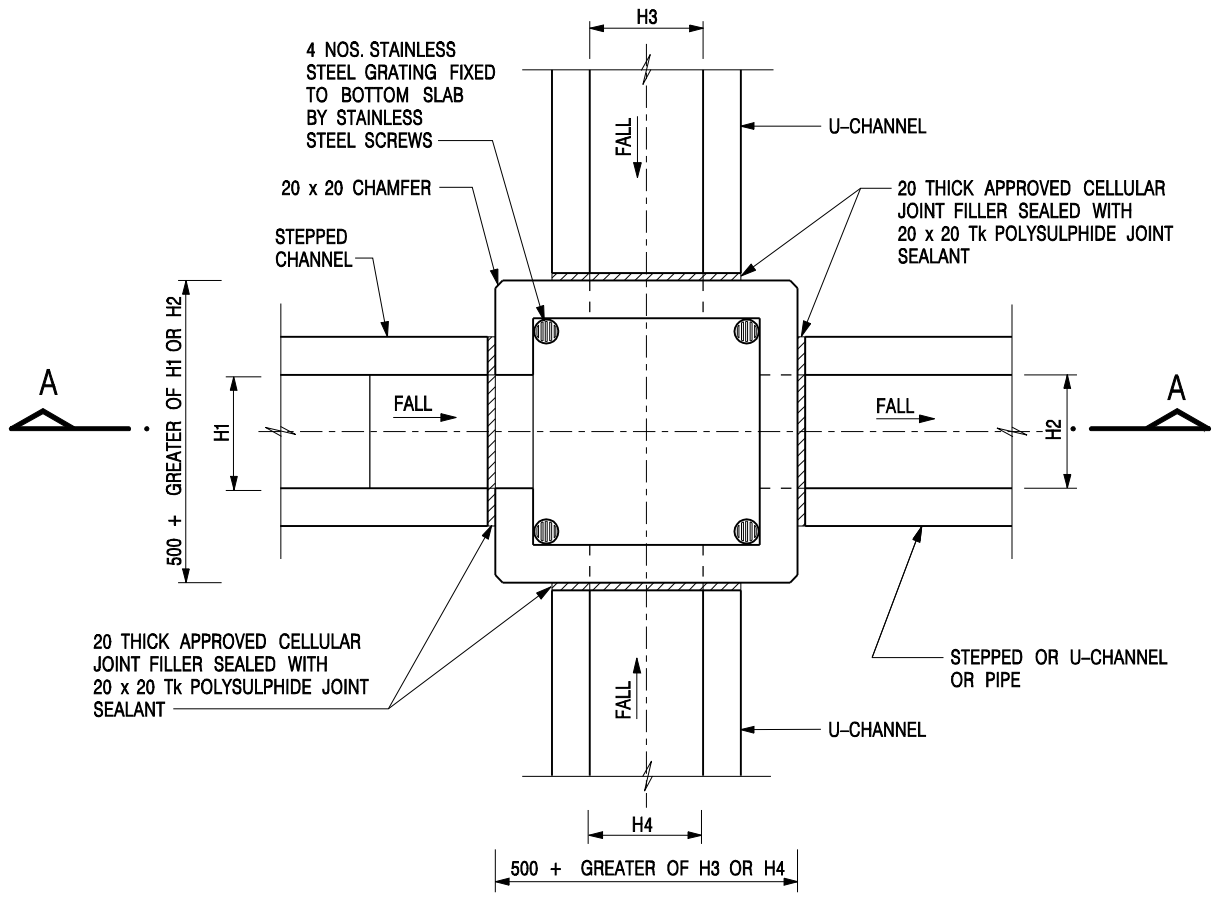
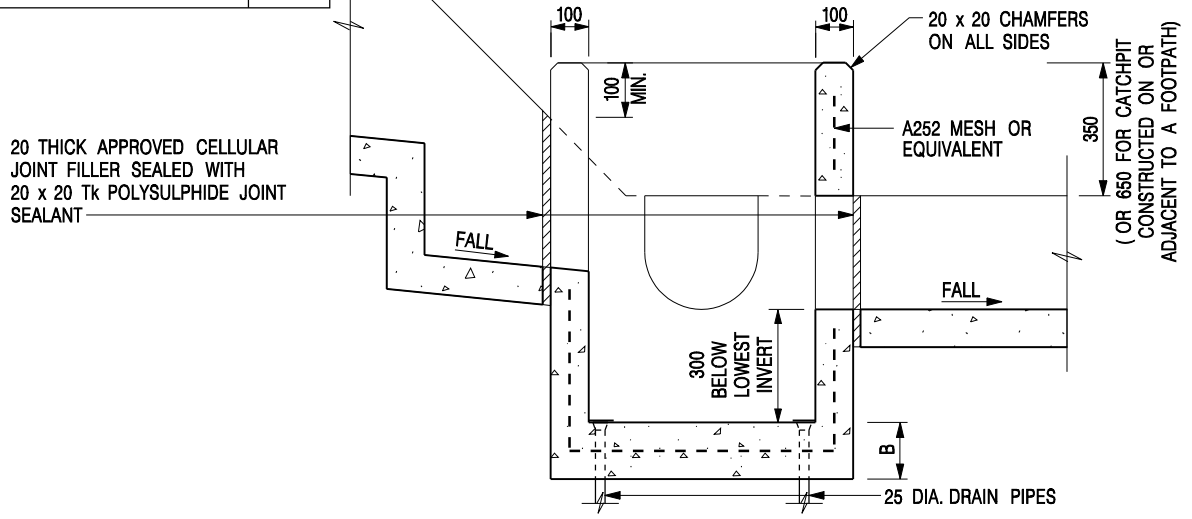


Figure 8.7 - Chart for the Rapid Design of Channels



NOMINAL SIZE (LARGEST OF H1, H2, H3 & H4)	B
300 - 600	150
675 - 900	175



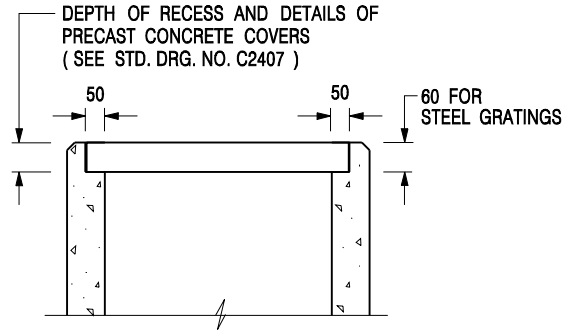
- NOTES:**
1. ALL DIMENSIONS ARE IN MILLIMETRES.
 2. REFER TO SHEET 2 FOR OTHER NOTES.

-	FORMER DRG. NO. C2406J.	Original Signed	03.2015
REF.	REVISION	SIGNATURE	DATE

CATCHPIT WITH TRAP
(SHEET 1 OF 2)

CEDD CIVIL ENGINEERING AND DEVELOPMENT DEPARTMENT

SCALE 1 : 20 DRAWING NO. C2406 /1
DATE JAN 1991




**ALTERNATIVE TOP SECTION
FOR PRECAST CONCRETE COVERS / GRATINGS**

NOTES:

1. ALL DIMENSIONS ARE IN MILLIMETRES.
2. ALL CONCRETE SHALL BE GRADE 20 /20.
3. CONCRETE SURFACE FINISH SHALL BE CLASS U2 OR F2 AS APPROPRIATE.
4. FOR DETAILS OF JOINT, REFER TO STD. DRG. NO. C2413.
5. CONCRETE TO BE COLOURED AS SPECIFIED.
6. UNLESS REQUESTED BY THE MAINTENANCE PARTY AND AS DIRECTED BY THE ENGINEER, CATCHPIT WITH TRAP IS NORMALLY NOT PREFERRED DUE TO PONDING PROBLEM.
7. UPON THE REQUEST FROM MAINTENANCE PARTY, DRAIN PIPES AT CATCHPIT BASE CAN BE USED BUT THIS IS FOR CATCHPITS LOCATED AT SLOPE TOE ONLY AND AS DIRECTED BY THE ENGINEER.
8. FOR CATCHPITS CONSTRUCTED ON OR ADJACENT TO A FOOTPATH, STEEL GRATINGS (SEE DETAIL 'A' ON STD. DRG. NO. C2405) OR CONCRETE COVERS (SEE STD. DRG. NO. C2407) SHALL BE PROVIDED AS DIRECTED BY THE ENGINEER.
9. IF INSTRUCTED BY THE ENGINEER, HANDRAILING (SEE DETAIL 'G' ON STD. DRG. NO. C2405; EXCEPT ON THE UPSLOPE SIDE) IN LIEU OF STEEL GRATINGS OR CONCRETE COVERS CAN BE ACCEPTED AS AN ALTERNATIVE SAFETY MEASURE FOR CATCHPITS NOT ON A FOOTPATH NOR ADJACENT TO IT. TOP OF THE HANDRAILING SHALL BE 1 000 mm MIN. MEASURED FROM THE ADJACENT GROUND LEVEL.
10. MINIMUM INTERNAL CATCHPIT WIDTH SHALL BE 1 000 mm FOR CATCHPITS WITH A HEIGHT EXCEEDING 1 000 mm MEASURED FROM THE INVERT LEVEL TO THE ADJACENT GROUND LEVEL. AND, STEP IRONS (SEE DSD STD. DRG. NO. DS1043) AT 300 c/c STAGGERED SHALL BE PROVIDED. THICKNESS OF CATCHPIT WALL FOR INSTALLATION OF STEP IRONS SHALL BE INCREASED TO 150 mm.
11. FOR RETROFITTING AN EXISTING CATCHPIT WITH STEEL GRATING, SEE DETAIL 'F' ON STD. DRG. NO. C2405.
12. SUBJECT TO THE APPROVAL OF THE ENGINEER, OTHER MATERIALS CAN ALSO BE USED AS COVERS / GRATINGS.

-	FORMER DRG. NO. C2406J.	Original Signed	03.2015
REF.	REVISION	SIGNATURE	DATE

**CATCHPIT WITH TRAP
(SHEET 2 OF 2)**

 CIVIL ENGINEERING AND DEVELOPMENT DEPARTMENT	
SCALE 1 : 20	DRAWING NO.
DATE JAN 1991	C2406 /2

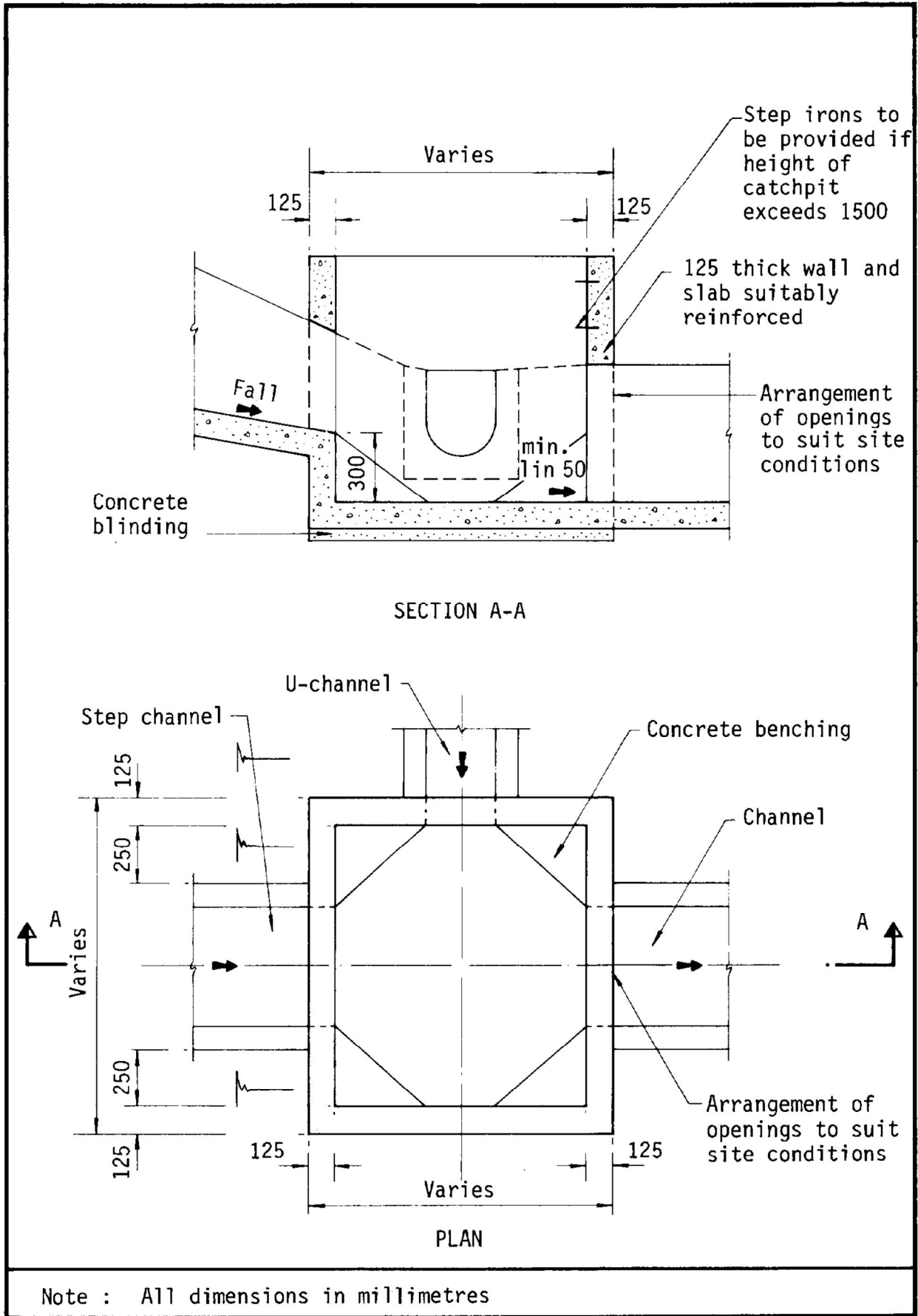
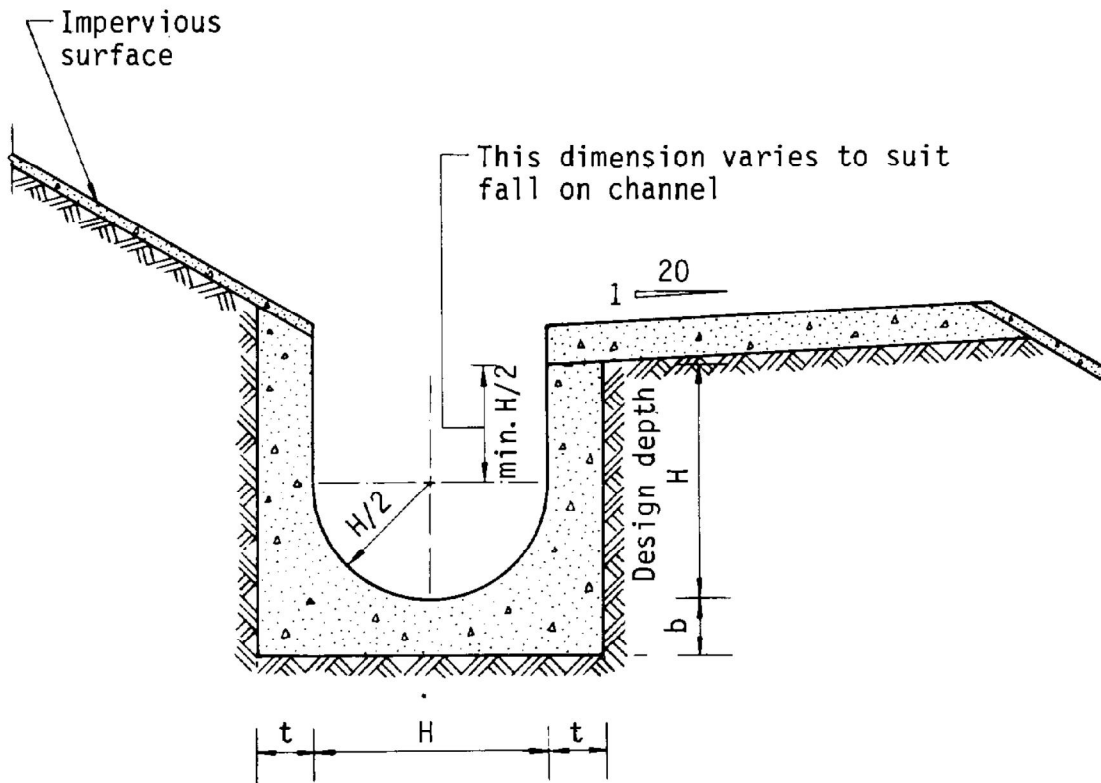


Figure 8.10 - Typical Details of Catchpits



Dimensions of U - channel

Nominal size of channel H (mm)	Thickness t (mm)	Thickness b (mm)
225 to 600	150	150
675 to 1200	175	225

Figure 8.11 - Typical U-channel Details

PHOTO 1



PHOTO 2

