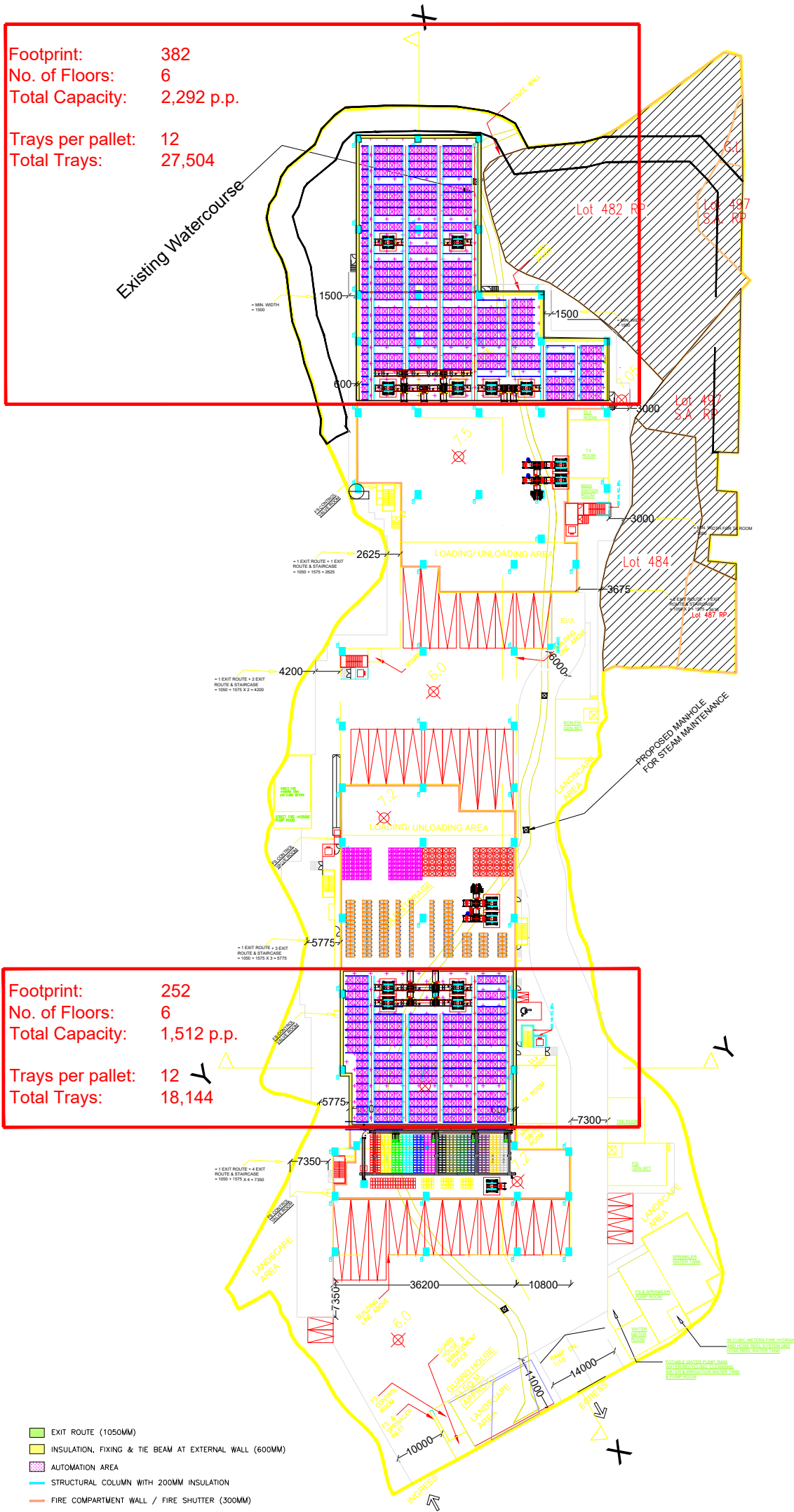

Annex | 14

Supporting Drawings

Footprint: 382
 No. of Floors: 6
 Total Capacity: 2,292 p.p.
 Trays per pallet: 12
 Total Trays: 27,504

Footprint: 252
 No. of Floors: 6
 Total Capacity: 1,512 p.p.
 Trays per pallet: 12
 Total Trays: 18,144

- EXIT ROUTE (1050MM)
- INSULATION, FIXING & TIE BEAM AT EXTERNAL WALL (600MM)
- AUTOMATION AREA
- STRUCTURAL COLUMN WITH 200MM INSULATION
- FIRE COMPARTMENT WALL / FIRE SHUTTER (300MM)
- INSULATION AT EXIT ROUTE (400MM)



Rev.	Date	Drawn
VER.1	25-3-2023	Tiffany

Notes


Client

Asset Management

 REITAR Logtech Group Limited
 城合物產科技集團有限公司
 Unit 801, 8/F., Tower 2, The Quayside,
 77 Hoi Bun Road, Kwun Tong, Hong Kong
 香港觀塘海濱道77號海濱道2座801室
 T 2554 5666 | F 3705 3590 | E info@reitar.io | W www.reitar.io

Consultants

 REITHUBS Consulting Limited
 城合顧問有限公司
 Unit 801, 8/F., Tower 2, The Quayside,
 77 Hoi Bun Road, Kwun Tong, Hong Kong
 香港觀塘海濱道77號海濱道2座801室
 T 2691 0990 | F 2120 5720
 E info@reithubs.com | W www.reithubs.com

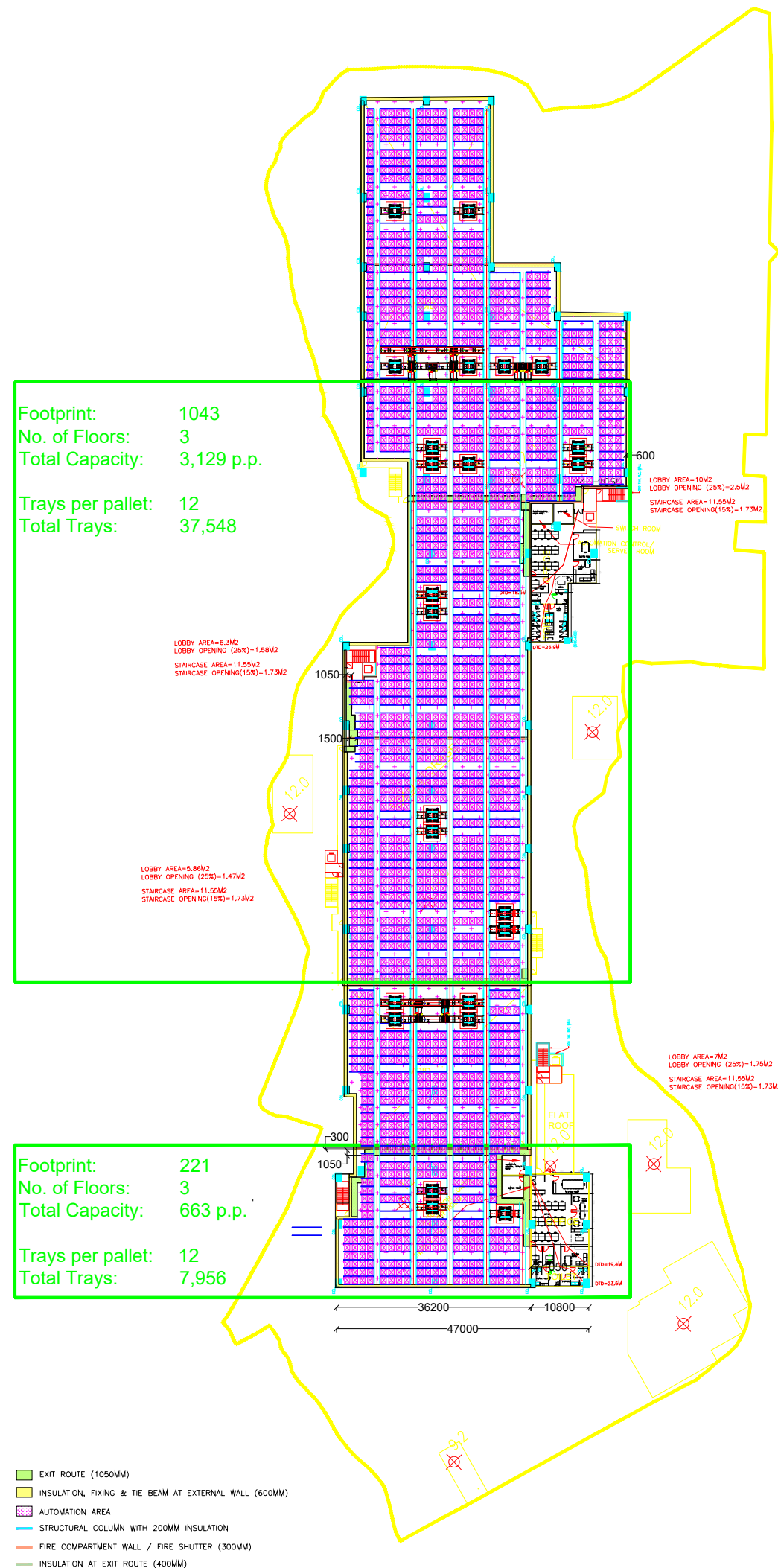
Contractor

 KAMUI Construction & Engineering Group Ltd
 KAMUI Cold Chain Engineering & Service Ltd
 KAMUI Logistics Automation System Ltd
 Unit 801, 8/F., Tower 2, The Quayside, 77 Hoi Bun Road, Kwun Tong, Hong Kong
 T: +852 2554 6666 F: +852 3705 3609 E: info@kamui.hk W: www.kamui.hk
 "We Built It."

SmartMore

Do not scale drawing, dimensions govern.
 Measurements are based on metric system.
 All dimension shall be verify on site before proceeding.
 The contractor shall verify all condition on the site & notify
 the project manager or any variations from dimension before
 construction. Do not use for construction unless expressly
 permitted. This drawing is for the tender and contract
 purposed only.

Project No.	
Project Name	
Location	MKT Chillcube
Signed	

Scale of A3: 1:300



1/F

Rev.	Date	Drawn
VER.1	25-3-2023	Tiffany

Notes

Client

Asset Management



REITAR Logistics Group Limited
 城合物流科技集團有限公司

Unit 801, 8/F., Tower 2, The Quayside,
 77 Hoi Bun Road, Kwun Tong, Hong Kong
 香港觀塘海濱道77號海濱道2座801室
 T: 2554 5666 | F: 3705 3590 | E: info@reitar.io | W: www.reitar.io

Consultants



REITHUB Consulting Limited
 城合顧問有限公司

Unit 801, 8/F., Tower 2, The Quayside,
 77 Hoi Bun Road, Kwun Tong, Hong Kong
 香港觀塘海濱道77號海濱道2座801室
 T: 2691 0990 | F: 2120 5720
 E: info@reithubs.com | W: www.reithubs.com

Contractor



KAMUI Construction & Engineering Group Ltd
 KAMUI Cold Chain Engineering & Service Ltd
 KAMUI Logistics Automation System Ltd

Unit 801, 8/F., Tower 2, The Quayside, 77 Hoi Bun Road, Kwun Tong, Hong Kong
 T: +852 2554 6666 F: +852 3705 3609 E: info@kamui.hk W: www.kamui.hk

"We Built It."

SmartMore

Do not scale drawing, dimensions govern.
 Measurements are based on metric system.
 All dimension shall be verify on site before proceeding.
 The contractor shall verify all condition on the site & notify
 the project manager or any variations from dimension before
 construction. Do not use for construction unless expressly
 permitted. This drawing is for the tender and contract
 purposed only.

Project No.	
Project Name	
Location	MKT Chillcube
Signed	

Scale of A3:
 1:300

Rev.	Date	Drawn
VER.1	25-3-2023	Tiffany

Notes

Client

Asset Management



REITAR Logtech Group Limited
 城合物流科技集團有限公司
 Unit 801, 8/F., Tower 2, The Quayside,
 77 Hoi Sun Road, Kwun Tong, Hong Kong
 香港觀塘海濱道77號海濱匯二期801室
 T 2554 5666 | F 3705 3590 | E info@reitar.io | W www.reitar.io

Consultants



REITHUBS Consulting Limited
 城合顧問有限公司
 Unit 801, 8/F., Tower 2, The Quayside,
 77 Hoi Sun Road, Kwun Tong, Hong Kong
 香港觀塘海濱道77號海濱匯二期801室
 T 2691 0990 | F 2120 5720
 E info@reithubs.com | W www.reithubs.com

Contractor



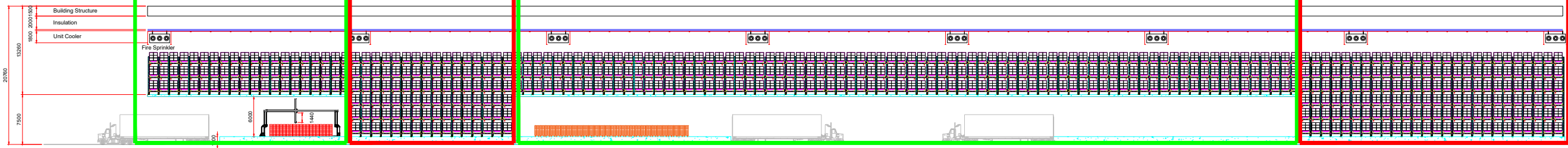
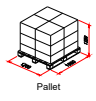
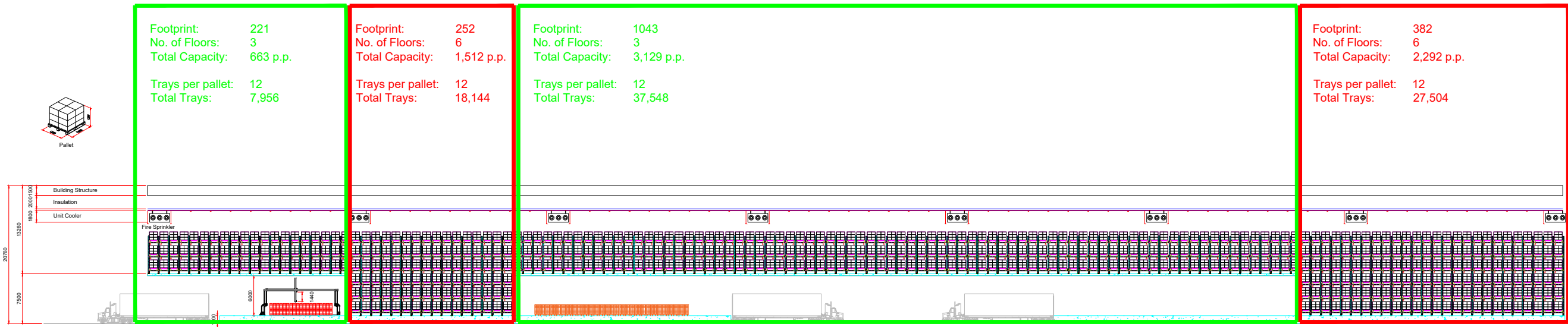
KAMUI Construction & Engineering Group Ltd
 KAMUI Cold Chain Engineering & Service Ltd
 KAMUI Logistics Automation System Ltd
 Unit 801, 8/F., Tower 2, The Quayside, 77 Hoi Sun Road, Kwun Tong, Hong Kong
 T: +852 2554 6666 F: +852 3705 3609 E: info@kamui.hk W: www.kamui.hk
 "We Built It."



Do not scale drawing, dimensions govern.
 Measurements are based on metric system.
 All dimension shall be verify on site before proceeding.
 The contractor shall verify all condition on the site & notify
 the project manager or any variations from dimension before
 construction. Do not use for construction unless expressly
 permitted. This drawing is for the tender and contract
 purposed only.

Project No.	
Project Name	
Location	MKT Chillcube
Signed	

Scale of A3:
 1:300



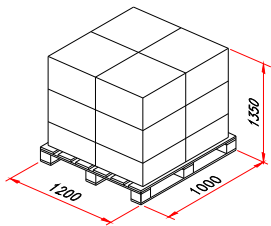
Rev.	Date	Drawn
VER.1	25-3-2023	Tiffany

Footprint: 221
 No. of Floors: 3
 Total Capacity: 663 p.p.

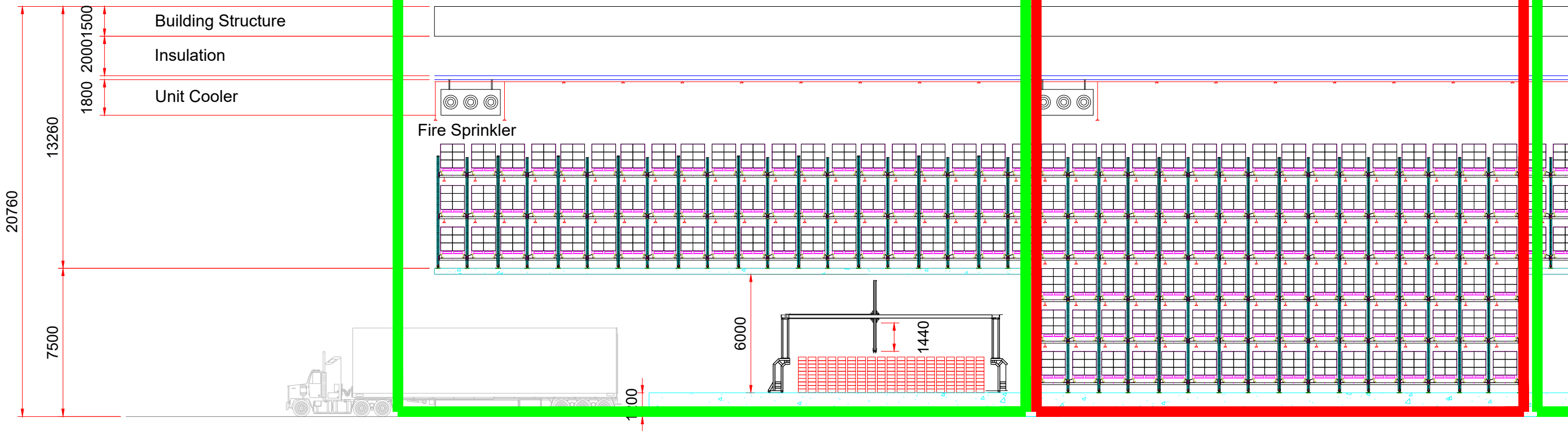
Footprint: 252
 No. of Floors: 6
 Total Capacity: 1,512 p.p.

Trays per pallet: 12
 Total Trays: 7,956

Trays per pallet: 12
 Total Trays: 18,144



Pallet



Notes

Client

Asset Management



REITAR Logtech Group Limited
 城合物流科技集團有限公司
 Unit 801, 8/F., Tower 2, The Quayside,
 77 Hoi Sun Road, Kwun Tong, Hong Kong
 香港觀塘海濱道77號海濱道2座801室
 T 2554 5666 | F 3705 3590 | E info@reitar.io | W www.reitar.io

Consultants



REITHUB Consulting Limited
 城合顧問有限公司
 Unit 801, 8/F., Tower 2, The Quayside,
 77 Hoi Sun Road, Kwun Tong, Hong Kong
 香港觀塘海濱道77號海濱道2座801室
 T 2691 0990 | F 2120 5720
 E info@reithub.com | W www.reithub.com

Contractor



KAMUI Construction & Engineering Group Ltd
 KAMUI Cold Chain Engineering & Service Ltd
 KAMUI Logistics Automation System Ltd
 Unit 801, 8/F., Tower 2, The Quayside, 77 Hoi Sun Road, Kwun Tong, Hong Kong
 T: +852 2554 6666 F: +852 3705 3609 E: info@kamui.hk W: www.kamui.hk
 "We Built It,"



Do not scale drawing, dimensions govern.
 Measurements are based on metric system.
 All dimension shall be verify on site before proceeding.
 The contractor shall verify all condition on the site & notify the project manager or any variations from dimension before construction. Do not use for construction unless expressly permitted. This drawing is for the tender and contract purposed only.

Project No.	
Project Name	
Location	MKT Chillcube
Signed	

Scale of A3:
 1:300