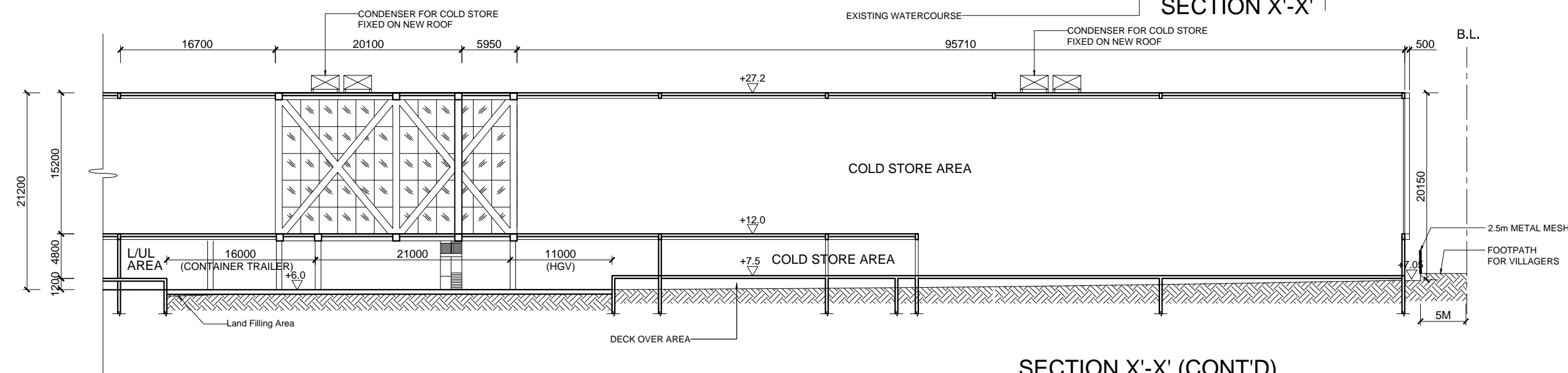
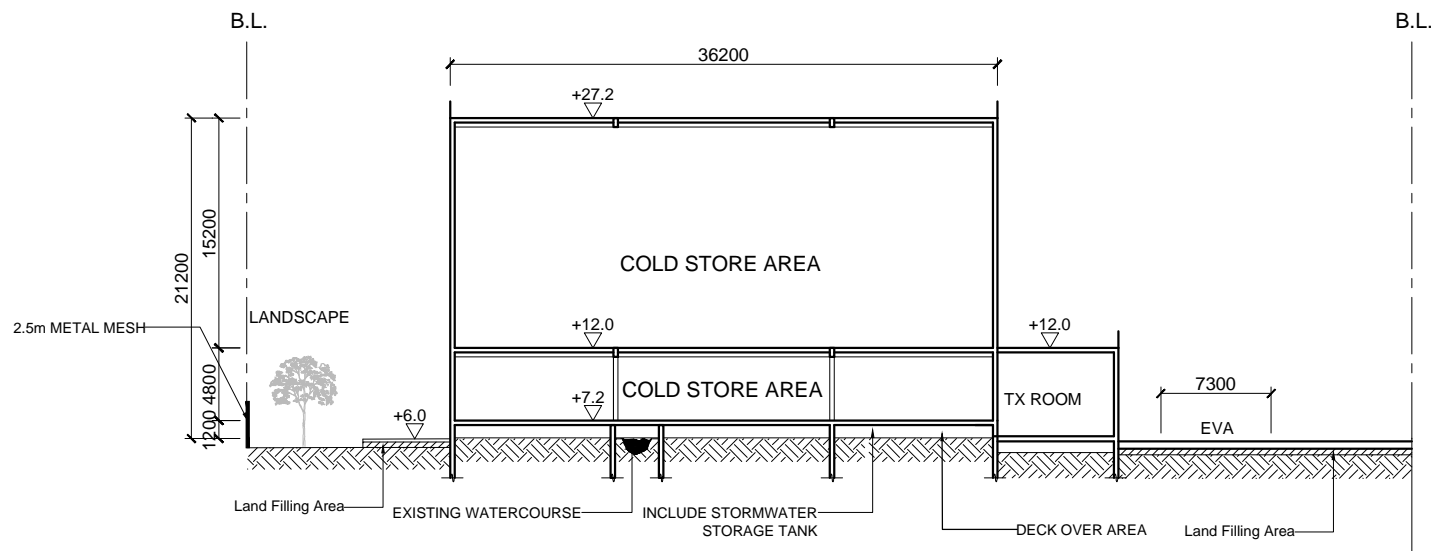


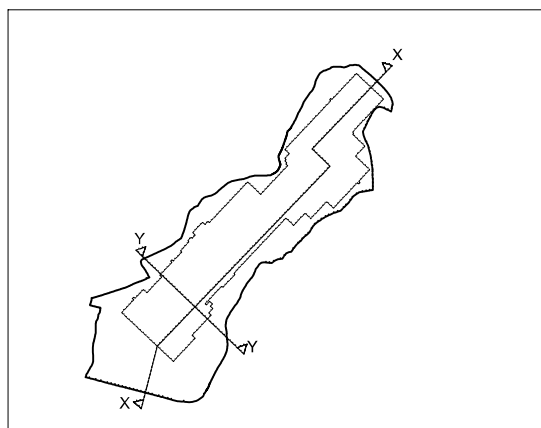
SECTION X'-X'



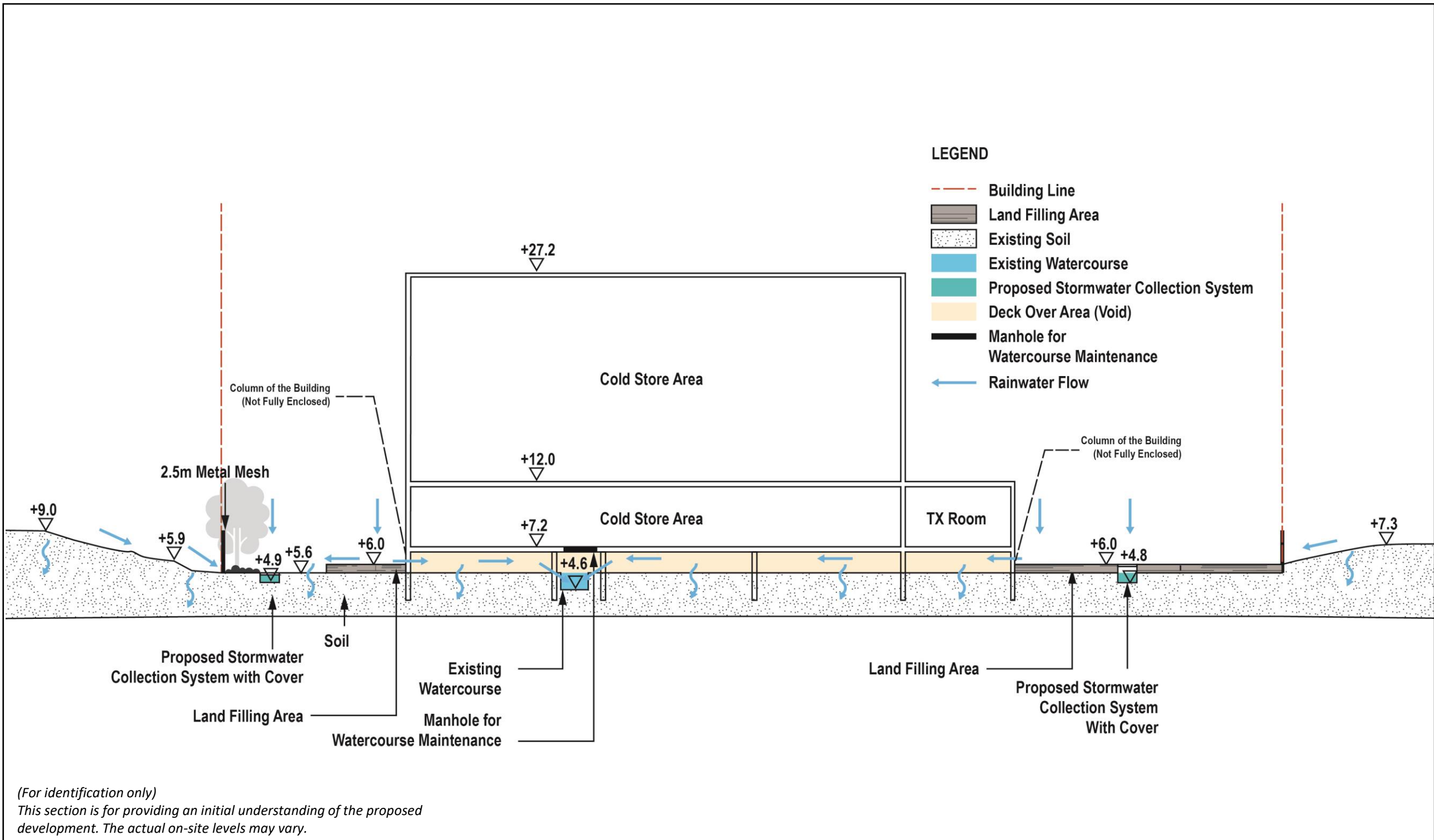
SECTION X'-X' (CONT'D)



SECTION Y'-Y'



| | | | | | |
|----------------------------------------------------------------------------------------------------------------------------------------------------------------------------------------------------------------------------------------------------------------------------------------------------------------------------------------------------|-----------------------------------------------------------------------------------------------------------------------------------------------------------------------------------------------------------------------------------------------------------------------------------|------------------------------------------------------------|-------------|-------------|------------|
| Architect | Project | Designed By | Drawn By | Date Drawn | Checked By |
| MG DESIGN H.K. LTD. | Section 16 Planning Application for Proposed Temporary Cold Storage for Poultry and Distribution Centre for a Period of 3 Years and Filling of Land for Site Formation Works at Various Lots in D.D. 89 and Adjoining Government Land, Man Kam To Road, Sha Ling, New Territories | DY | NC | 2023'9'5 | DY |
| <p>This drawing is to be read in conjunction with all related drawings. Do not scale from this drawing. All dimensions must be checked and verified on site before commencing any work or producing shop drawings. The originator should be notified immediately of any discrepancy. This drawing is copyright and remains the property of MG.</p> | | <p>Drawing Title SECTION X'-X' & SECTION Y'-Y'</p> | | | |
| | | Project No. | Scale | Drawing No. | Rev. |
| | | 21/HK/MKT01 | 1:500 on A3 | SC-001 | F |



Project:
Section 16 Planning Application for Proposed Temporary Cold Storage for Poultry and Distribution Centre for a Period of 3 Years and Filling of Land for Site Formation Works at Lots 471 S.B RP (Part), 472, 473, 474, 475, 476, 483, 501, 502, 504 S.B, 505 and 506 S.B RP in D.D. 89 and Adjoining Government Land, Man Kam To Road, Sha Ling, New Territories

Title:
Typical Section for Drainage Proposal

Illustration:
1

Scale:
Not to Scale

Date:
Sep 2023

Ref.: ADCL/PLG-10225-L014/1001

