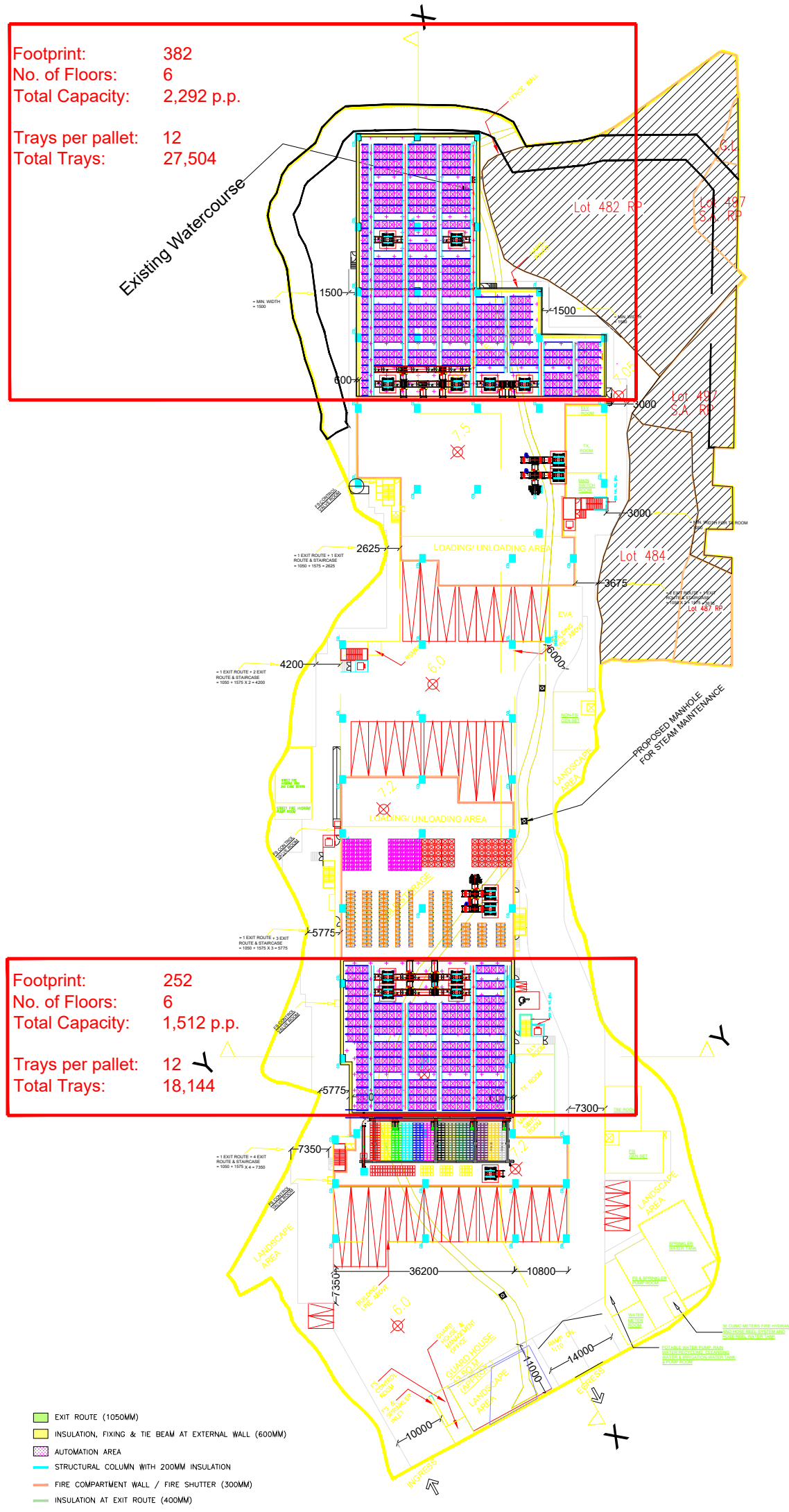


Enclosure | 2

Supporting Drawings (Annex 13)

Footprint: 382
 No. of Floors: 6
 Total Capacity: 2,292 p.p.
 Trays per pallet: 12
 Total Trays: 27,504

Footprint: 252
 No. of Floors: 6
 Total Capacity: 1,512 p.p.
 Trays per pallet: 12
 Total Trays: 18,144



- EXIT ROUTE (1050MM)
- INSULATION, FIXING & TIE BEAM AT EXTERNAL WALL (600MM)
- AUTOMATION AREA
- STRUCTURAL COLUMN WITH 200MM INSULATION
- FIRE COMPARTMENT WALL / FIRE SHUTTER (300MM)
- INSULATION AT EXIT ROUTE (400MM)

G/F

Rev.	Date	Drawn
VER.1	25-3-2023	Tiffany

Notes


Client

Asset Management



REITAR Logistics Group Limited
城合物流科技集團有限公司

Consultants




REITHUB Consulting Limited
城合顧問有限公司

Contractor



KAMUI Construction & Engineering Group Ltd
KAMUI Cold Chain Engineering & Service Ltd
KAMUI Logistics Automation System Ltd

"We Built It."

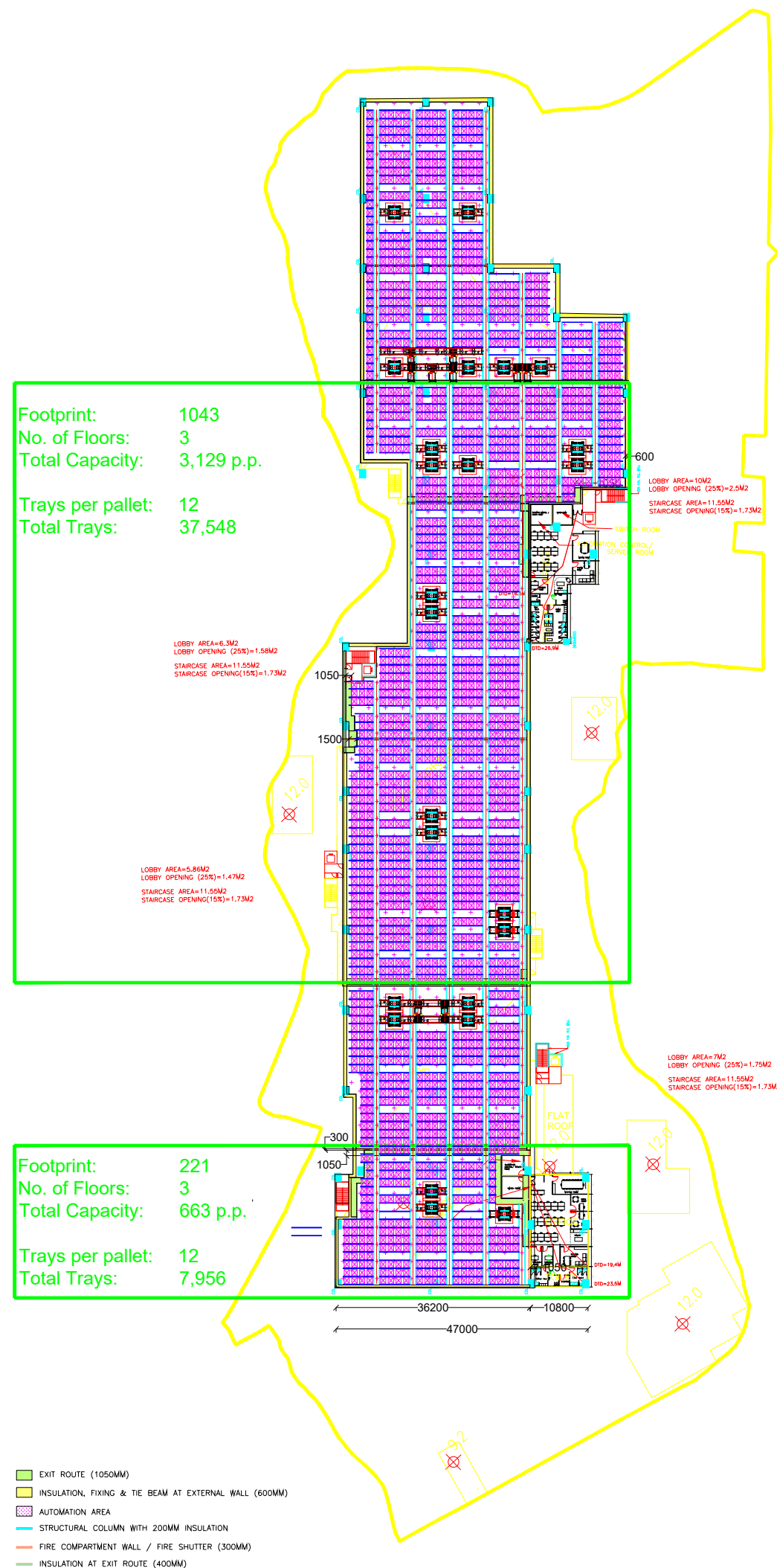


Do not scale drawing, dimensions govern.
Measurements are based on metric system.
All dimension shall be verify on site before proceeding.
The contractor shall verify all condition on the site & notify the project manager or any variations from dimension before construction. Do not use for construction unless expressly permitted. This drawing is for the tender and contract purposed only.

Project No.	
Project Name	
Location	MKT Chillcube

Signed

Scale of A3:
1:300



Footprint: 1043
No. of Floors: 3
Total Capacity: 3,129 p.p.
Trays per pallet: 12
Total Trays: 37,548

Footprint: 221
No. of Floors: 3
Total Capacity: 663 p.p.
Trays per pallet: 12
Total Trays: 7,956

Rev.	Date	Drawn
VER.1	25-3-2023	Tiffany

Notes


Client

Asset Management



REITAR Logtech Group Limited
 城合物流科技集團有限公司

Consultants




REITHUB Consulting Limited
 城合顧問有限公司

Contractor



KAMUI Construction & Engineering Group Ltd
 KAMUI Cold Chain Engineering & Service Ltd
 KAMUI Logistics Automation System Ltd

"We Built It."



Do not scale drawing, dimensions govern.
 Measurements are based on metric system.
 All dimension shall be verify on site before proceeding.
 The contractor shall verify all condition on the site & notify the project manager or any variations from dimension before construction. Do not use for construction unless expressly permitted. This drawing is for the tender and contract purposed only.

Project No.	
Project Name	
Location	MKT Chillcube

Signed

Scale of A3:
 1:300

Rev.	Date	Drawn
VER.1	25-3-2023	Tiffany

Notes


Client

Asset Management



REITAR Logistics Group Limited
城合物流科技集團有限公司

Consultants



REITHUB Consulting Limited
城合顧問有限公司

Contractor



KAMUI Construction & Engineering Group Ltd
KAMUI Cold Chain Engineering & Service Ltd
KAMUI Logistics Automation System Ltd

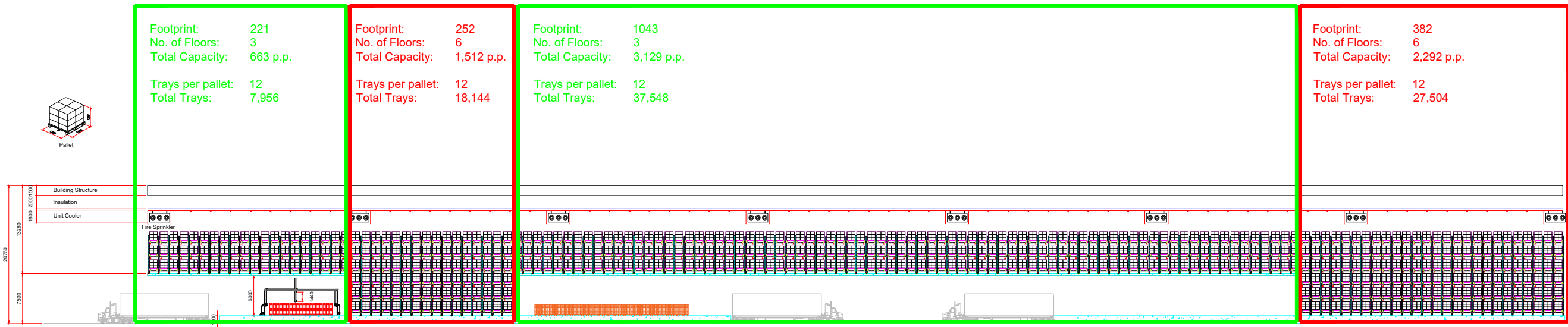
"We Built It."



Do not scale drawing, dimensions govern.
Measurements are based on metric system.
All dimension shall be verify on site before proceeding.
The contractor shall verify all condition on the site & notify the project manager or any variations from dimension before construction. Do not use for construction unless expressly permitted. This drawing is for the tender and contract purposed only.

Project No.	
Project Name	
Location	MKT Chillcube
Signed	

Scale of A3:
1:300



Rev.	Date	Drawn
VER.1	25-3-2023	Tiffany

Notes

Client

Asset Management



REITAR Logistics Group Limited
城合物流科技集團有限公司

Consultants



REITHUB Consulting Limited
城合顧問有限公司

Contractor



KAMUI Construction & Engineering Group Ltd
KAMUI Cold Chain Engineering & Service Ltd
KAMUI Logistics Automation System Ltd

"We Built It."



Do not scale drawing, dimensions govern.
Measurements are based on metric system.
All dimension shall be verify on site before proceeding.
The contractor shall verify all condition on the site & notify the project manager or any variations from dimension expressly permitted. This drawing is for the tender and contract purposed only.

Project No.	
Project Name	
Location	MKT Chillcube
Signed	

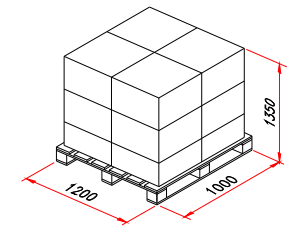
Scale of A3:
1:300

Footprint: 221
No. of Floors: 3
Total Capacity: 663 p.p.

Trays per pallet: 12
Total Trays: 7,956

Footprint: 252
No. of Floors: 6
Total Capacity: 1,512 p.p.

Trays per pallet: 12
Total Trays: 18,144



Pallet

