

Health, Welfare & Food Bureau
SARS Bulletin
(11 June 2003)

Summary of Cases

On 10 June, three more patients with Severe Acute Respiratory Syndrome (SARS) had recovered from the disease and been discharged from hospitals, hence increasing the total number of recovered patients to 1,368 (i.e., 78% of all 1,754 SARS cases). Out of the 1,754 cases, 386 involved health care workers or medical students. There were 96 SARS patients remaining in hospitals, in which 34 patients were undergoing convalescence before discharge and 17 patients were receiving treatment in the intensive care units. There was 1 suspected case under treatment, and the cumulative total of fatal cases was 290.

2. On 10 June, one more patient was confirmed to have SARS. Since 16 May, the daily number of newly confirmed SARS cases has fallen below 5 for the 26th consecutive day, and the average number of newly confirmed cases in the past week was 1 per day.

3. *Figure 1* (on page 2) is the epidemic curve of 10 June showing the current status of 1,730 patients with confirmed onset date (i.e. 99% of all 1,754 cases). Among them, 77% had recovered and been discharged from hospital, 6% remained in hospital and 17% had deceased. *Table 1* (on page 2) shows the proportion of cases in each residential district that have recovered. In 10 Districts, about 80% to 100% of cases had recovered, and in the remaining 8 districts, the proportion ranged from 63% to 78%.

Figure 1: Epidemic curve of 10 June 2003

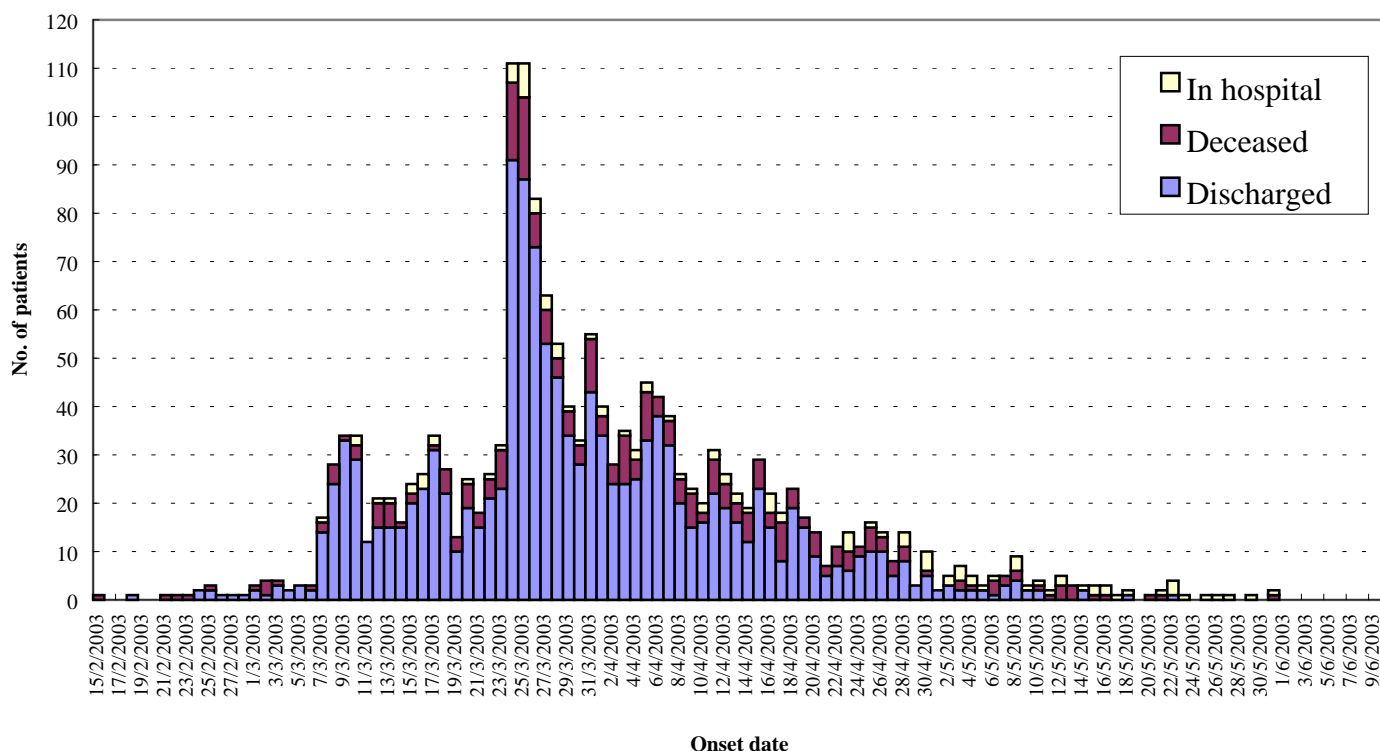


Table 1: Proportion of cases in the respective residential district that have recovered

Residential District	Percentage	Residential District	Percentage
Central & Western	100%	Islands	80%
Eastern	85%	Northern	68%
Southern	93%	Sai Kung	83%
Wan Chai	87%	Sha Tin	75%
Kowloon City	82%	Tai Po	65%
Kwun Tong	82%	Kwai Tsing	80%
Sham Shui Po	78%	Tsuen Wan	63%
Wong Tai Sin	73%	Tuen Mun	63%
Yau Tsim Mong	85%	Yuen Long	70%

4. The distribution of the recovered cases by onset date and residential district is shown in *Figure 2* (on page 3), and the breakdown by age group and gender is shown in *Table 2* (on page 3).

Figure 2: Distribution of recovered cases by onset date and residential district

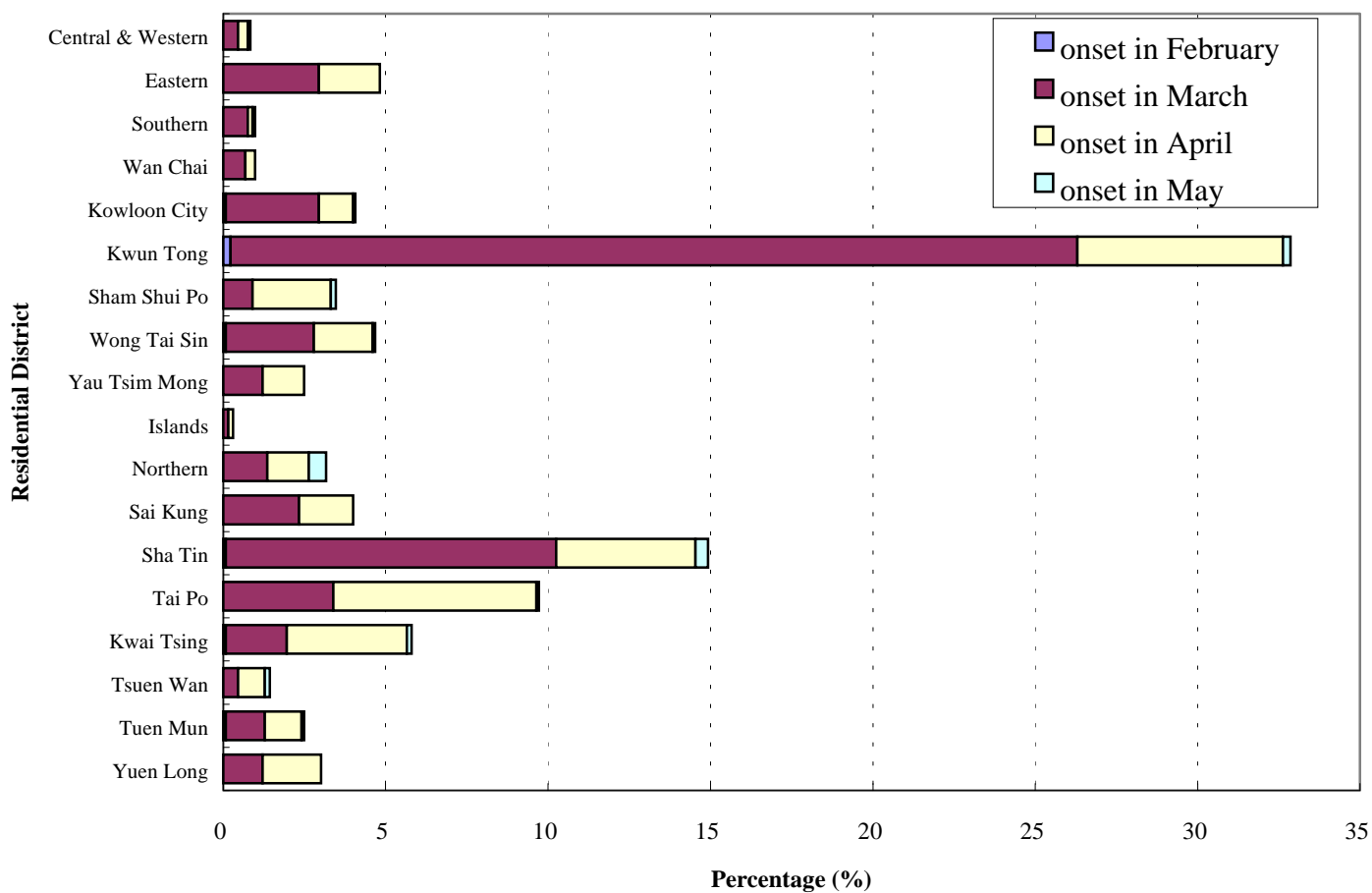


Table 2: Breakdown of recovered cases by age group and gender

Age group	Male	Female
0 – 14	3%	3%
15 – 24	5%	8%
25 – 34	11%	18%
35 – 44	9%	14%
45 – 54	6%	10%
55 – 64	3%	4%
65 – 74	2%	2%
75 or above	2%	1%
Total	41%	59%

Note: Percentage may not add up to total due to rounding.

Ongoing Development

Health Checks at Border Points

5. Since 29 March, medical posts have been set up at the airport, ports and border points to watch for travellers displaying symptoms of SARS, and all incoming travellers are required to complete a health declaration. To enhance the preventive measures in containing the spread of SARS, temperature checks for all arriving, departing and transit passengers at the Hong Kong International Airport have also been implemented since mid-April. Since 14 April, all close contacts of SARS patients are also barred from leaving Hong Kong during the home confinement period.

6. As regards other control points, arriving passengers via ports and land boundary crossings are subject to temperature screening in addition to health declaration with effect from 26 April. Since mid-May, departing passengers from the Hong Kong Macao Ferry Terminal and the China Ferry Terminal, and all people departing for the Mainland by through trains from the Hung Hom Station are required to undergo temperature checks before leaving Hong Kong.

7. As at 10 June, 2 passengers had been confirmed to have SARS since the implementation of all the above health checking measures.

Home Confinement

8. All household contacts of confirmed or suspected SARS patients are required to undergo home confinement for monitoring and treatment up to a maximum of 10 days. As at 10 June, 10 persons (from 3 households) were under this home confinement requirement. So far, a total of 1,262 persons (from 493 households) had been affected by this requirement, of whom 34 of them were later confirmed to have SARS.

Further Information

9. To empower the public in fighting against the SARS, DH has issued

advice and guidelines on prevention of the disease for various sectors. Publicity programmes have been made to educate the public on all aspects of the disease, including the symptoms, the mode of transmission, the importance of seeking early treatment and various preventive measures namely personal and environmental hygiene. Health education information is available on the 24-hour pre-recorded hotlines (2833 0111) and has been uploaded onto a designated webpage of DH (<http://www.info.gov.hk/info/sars/eindex.htm>). A hotline (187 2222) has also been provided for public enquiries.

Health, Welfare and Food Bureau
Government of the Hong Kong Special Administrative Region