

Health, Welfare & Food Bureau
SARS Bulletin
(6 June 2003)

Summary of Cases

On 5 June, four more patients with Severe Acute Respiratory Syndrome (SARS) had recovered from the disease and been discharged from hospitals, hence increasing the total number of recovered patients to 1,343 (i.e., 76.8% of all 1,748 SARS cases). Out of the 1,748 cases, 386 involved health care workers or medical students. There were 121 SARS patients remaining in hospitals, in which 48 patients were undergoing convalescence before discharge and 23 patients were receiving treatment in the intensive care units. There were 7 suspected cases under treatment, and the cumulative total of fatal cases was 284.

2. No new SARS case was confirmed on 5 June. Since 16 May, the daily number of newly confirmed SARS cases has fallen below 5 for the 21st consecutive day, and the average number of newly confirmed cases in the past week was 2 per day.

3. Based on the information available, the distribution of onset date and residential district of 1,716 patients is shown in *Figure 1* on page 2. About 0.7% of cases had onset date in February, 56.7% in March, 38.1% in April, 4.6% in May, and no case in June so far. About 97.8% of the cases had their onset date before 9 May (i.e. more than four weeks ago). The distribution of cases with onset in the past 4 weeks is shown in *Table 1* on page 3. Here are some key observations: -

- For 9 Districts (namely Central & Western, Eastern, Southern, Wan Chai, Kowloon City, Kwun Tong, Wong Tai Sin, Sai Kung and Sha Tin), over half of the cases in the District had onset date in March.
- For 6 Districts (namely Sham Shui Po, Tai Po, Kwai Tsing, Tsuen Wan, Tuen Mun and Yuen Long), over half of the cases in the District had onset date in April.
- For the remaining 3 Districts (namely Yau Tsim Mong, Islands and

Northern), most of the cases had their onset date in March and April, but the distribution was rather even.

- None of the 37 cases with onset in the past 4 weeks lived in Central & Western, Southern, Wan Chai, Wong Tai Sin and Yau Tsim Mong Districts. They were distributed in the remaining 13 Districts, ranging from 1 to 8 cases each.
- Four cases had onset in the past 2 weeks, and they were distributed in Tai Po, Islands and Sham Shui Po Districts.

Figure 1: Distribution of cases by residential district and onset date

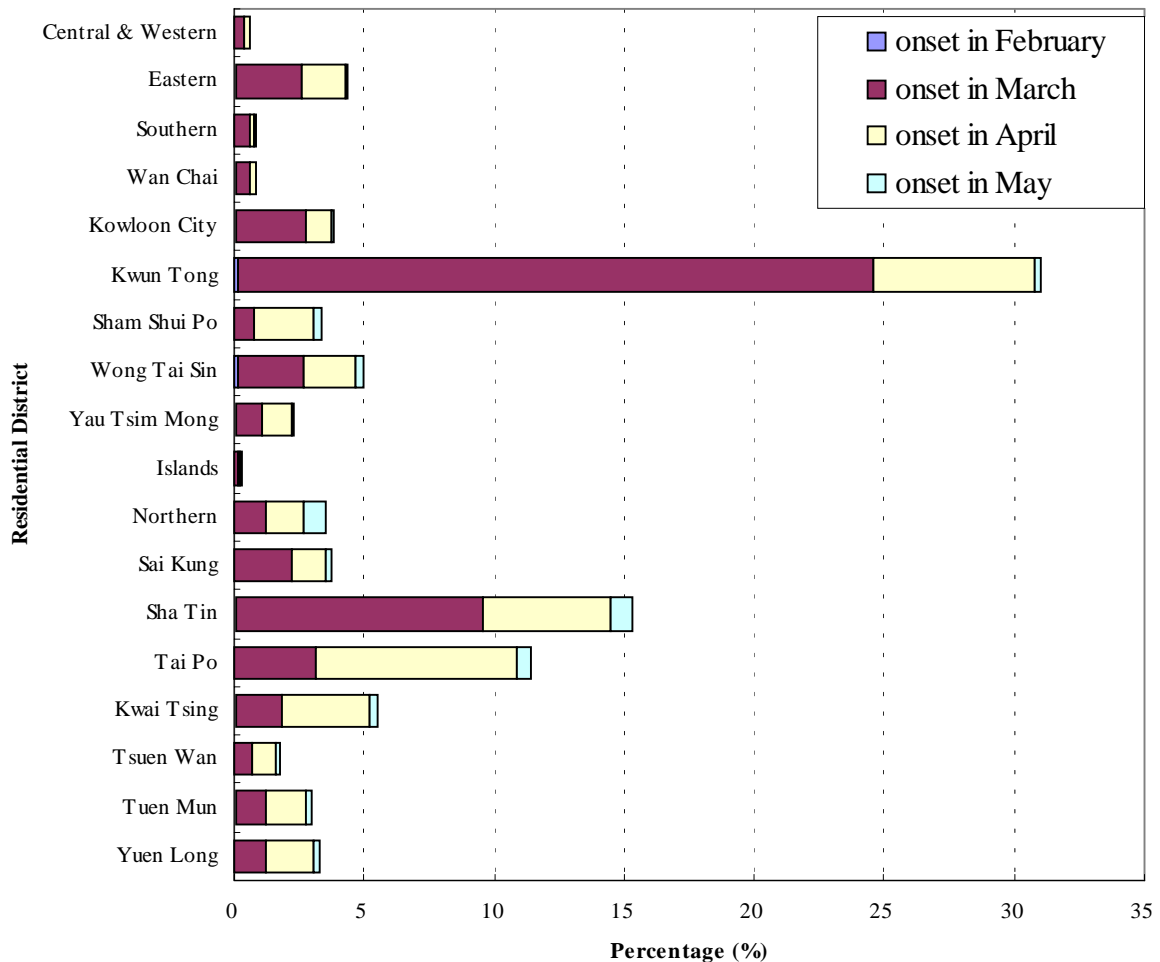


Table 1: Cases with known onset dates in the past 2 two-week periods

District	9/5 - 22/5	23/5 - 5/6	District	9/5 - 22/5	23/5 - 5/6
Central & Western	0	0	Islands	0	1
Eastern	1	0	Northern	8	0
Southern	0	0	Sai Kung	1	0
Wan Chai	0	0	Sha Tin	8	0
Kowloon City	1	0	Tai Po	4	2
Kwun Tong	1	0	Kwai Tsing	3	0
Sham Shui Po	0	1	Tsuen Wan	1	0
Wong Tai Sin	0	0	Tuen Mun	2	0
Yau Tsim Mong	0	0	Yuen Long	3	0

Ongoing Development

Health Checks at Border Points

4. Since 29 March, medical posts have been set up at the airport, ports and border points to watch for travellers displaying symptoms of SARS, and all incoming travellers are required to complete a health declaration. To enhance the preventive measures in containing the spread of SARS, temperature checks for all arriving, departing and transit passengers at the Hong Kong International Airport have also been implemented since mid-April. Since 14 April, all close contacts of SARS patients are also barred from leaving Hong Kong during the home confinement period.

5. As regards other control points, arriving passengers via ports and land boundary crossings are subject to temperature screening in addition to health declaration with effect from 26 April. Since mid-May, departing passengers from the Hong Kong Macao Ferry Terminal and the China Ferry Terminal, and all people departing for the Mainland by through trains from the Hung Hom Station are required to undergo temperature checks before leaving Hong Kong.

6. As at 5 June, 2 passengers had been confirmed to have SARS since the implementation of all the above health checking measures.

Home Confinement

7. All household contacts of confirmed or suspected SARS patients are required to undergo home confinement for monitoring and treatment up to a maximum of 10 days. As at 5 June, 17 persons (from 6 households) were under this home confinement requirement. So far, a total of 1,254 persons (from 491 households) had been affected by this requirement, of whom 34 of them were later confirmed to have SARS.

Further Information

8. To empower the public in fighting against the SARS, DH has issued advice and guidelines on prevention of the disease for various sectors. Publicity programmes have been made to educate the public on all aspects of the disease, including the symptoms, the mode of transmission, the importance of seeking early treatment and various preventive measures namely personal and environmental hygiene. Health education information is available on the 24-hour pre-recorded hotlines (2833 0111) and has been uploaded onto a designated webpage of DH (<http://www.info.gov.hk/info/sars/eindex.htm>). A hotline (187 2222) has also been provided for public enquiries.

Health, Welfare and Food Bureau
Government of the Hong Kong Special Administrative Region