



Health, Welfare and Food Bureau
Hong Kong Special Administrative Region



Prevention and Contingency Measures to Combat Avian Influenza in Hong Kong

Presentation for
Panel on Food Safety and Environmental Hygiene
on 12 February 2004



Health, Welfare and Food Bureau
Hong Kong Special Administrative Region



Measures implemented since 1997



All-round measures targeting sources of virus and carriers

- **Vaccination for all imported and local chickens**
- **Regulation of local farms (including tightened biosecurity measures)**
- **Import control**
- **Segregation policy**
- **Market rest days**
- **Hygiene requirements on wholesale markets and retail outlets**
- **Surveillance on human influenza and avian influenza**



Measures implemented in response to recent outbreaks in Asia



Measures targeted at the poultry sector

- **Temporary suspension of import of live birds**
- **Enhanced surveillance of wild birds**
- **Establishment of formal liaison mechanism with the Mainland**
- **Enhanced inspection of farms and market**
- **Door-to-door collection of dead chickens from farms**
- **Closure of Mai Po marshes and walk-in aviaries in parks**



Public Health Measures – Disease Surveillance

- **Statutory Notification**
 - **AI (H5) was made statutorily notifiable under the Quarantine and Prevention of Disease Ordinance (Cap. 141) on 30 January 2004**



Public Health Measures – Disease Surveillance

- **Health check measures at the border control points**
 - Individuals feeling sick will be asked for history of travelling and contact with poultry.



Public Health Measures – Disease Surveillance

- **Enhanced monitoring**
 - Sentinel surveillance of human influenza and avian influenza
 - Laboratory surveillance
 - Investigation of outbreak
 - Influenza-like illness with travel history to infected areas





Public Health Measures – Disease Surveillance

- **Strengthened external communication**
 - Daily contact with the Mainland on latest developments
 - Close contact with WHO and health authorities of places affected by AI



Public Health Measures – Public Education

- **AI Website**
 - Dedicated website provides updated information and advice on AI

(<http://www.info.gov.hk/info/flu>)




Health, Welfare and Food Bureau
 Hong Kong Special Administrative Region



Public Health Measures – Public Education

- Leaflets and posters**
 - “What You Should Know about Avian Flu”
 - Over 1.3 million copies were produced in different languages, such as Tagalog, Thai and Indonesian, for territory-wide dissemination

慎防禽流感 衛生措施最要緊



- 盡量避免接觸家禽和鳥類，不要餵飼禽鳥。
- 勤洗手。
- 烹調和處理食物要徹底煮熟方可進食。
- 如有呼吸系統症狀或發燒，應戴上口罩，並立即看醫生。
- Avoid close contact with poultry and birds – do not feed birds.
- Wash hands frequently.
- Cook all foods from poultry, including eggs, thoroughly before eating.
- If you have respiratory symptoms or fever, wear a mask and see a doctor.


Health, Welfare and Food Bureau
 Hong Kong Special Administrative Region



Public Health Measures – Public Education

- Mass Media Publicity**
 - API on all radio and TV channels
 - Health message announced at border control points







Further measures to tackle local confirmed avian influenza case(s)



Scenarios

Contingency plans are in place for three scenarios:-

1. H5N1 virus is found in a dead chicken in Hong Kong
2. Detection of one or more lab-confirmed local case of H5N1 human infection in Hong Kong
3. Emergence of signs of human-to-human spread in the domestic environment



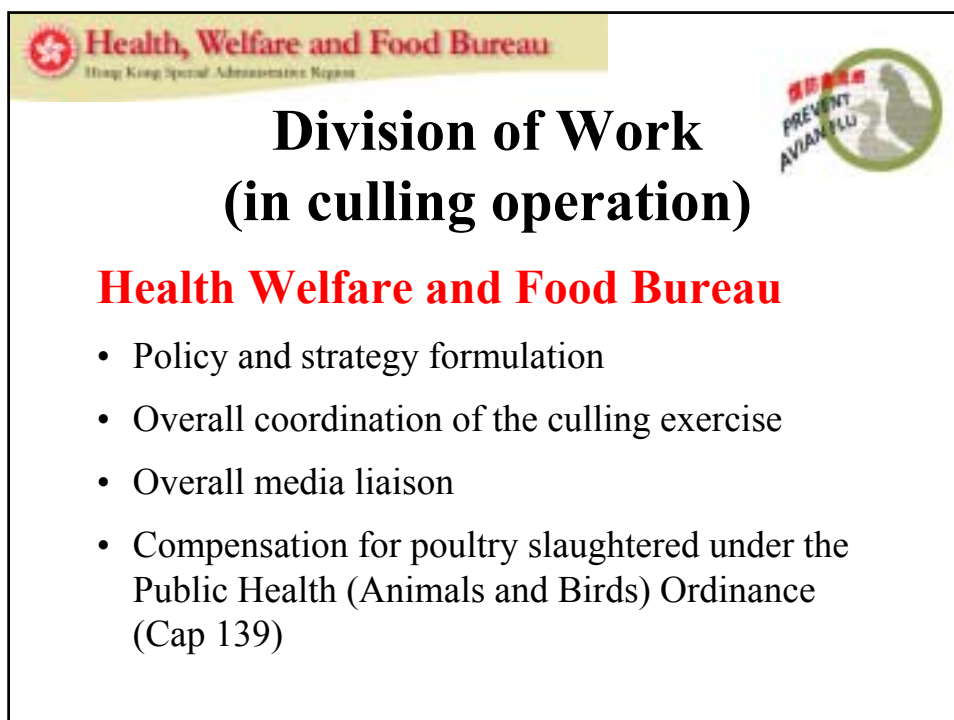
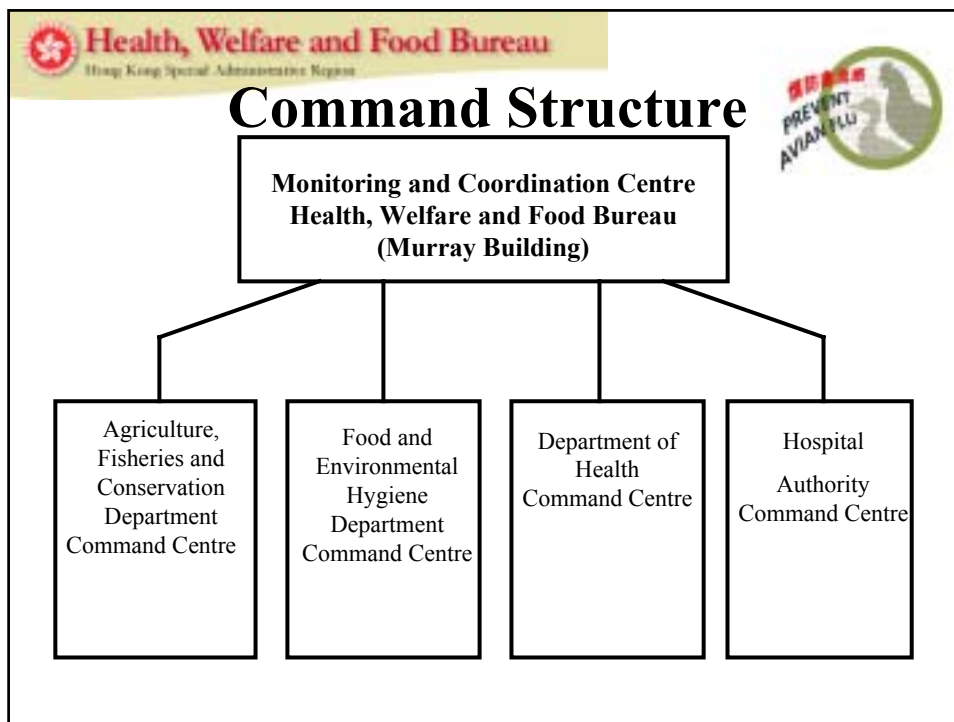
HWFB's Role

- To coordinate interdepartmental responses
- To monitor implementation of various contingent actions
- To evaluate resource requirements, and to coordinate acquisition of resources where necessary
- To re-assess government preparedness to cope with a deterioration of situation and to take action to augment identified inadequacies
- To formulate and coordinate risk communication



Mass culling of chickens

- We will cull all live poultry in Hong Kong when
H5N1 virus is found in
 - **any dead poultry in Hong Kong, or**
 - **a human case (local)**





Division of Work (in culling operation)

Agriculture, Fisheries and Conservation Department (AFCD)

- Operation commander for culling in poultry farms and wholesale market

Food and Environmental Hygiene Department

- Operation commander for culling at retail outlets



Division of Work (in culling operation)

- Director of Agriculture, Fisheries and Conservation will declare all local poultry farms, the wholesale market, and all retail outlets to be infected places under the Public Health (Animal and Birds) Regulations
- AFCD and FEHD will identify the index farm or market



Division of Work (in culling operation)

- Culling would start at the index farm or market
- Other poultry farms will be depopulated by clusters
- Other wholesale and retail outlets will be depopulated at the same time



Division of Work (in culling operation)

Department of Health

- Health adviser to protect persons engaged in the culling operation
- Provide training on the proper use of personal protective equipment and other preventive measures



Division of Work (in culling operation)

Police

- Maintain law and order
- Initial quarantine of farms

Civil Aid Service

- Help out in the culling operation

Environment Protection Department

- Make arrangement for the disposal of carcass at landfills



Distribution of Chicken Farms







Distribution of Retail Outlets – Hong Kong Island



District	No of Fresh Provision Shops			Poultry Stalls in FEHD Markets	No. of Poultry Retail Outlets	No. of FEHD Markets
	Private Premises	Public Housing Estates	Sub-total			
Central & West	7	0	7	49	56	5
Wan Chai	13	0	13	33	46	5
Eastern	19	9	28	35	63	9
Southern	3	9	12	21	33	5
	42	18	60	138	198	24



Distribution of Retail Outlets – Kowloon

District	No of Fresh Provision Shops			Poultry Stalls in FEHD Markets	No. of Poultry Retail Outlets	No. of FEHD Markets
	Private Premises	Public Housing Estates	Sub-total			
Kwun Tong	6	24	30	17	47	5
Wong Tai Sin	0	26	26	36	62	4
Kowloon City	15	4	19	25	44	3
Sham Shui Po	8	13	21	47	68	4
Yau Tsim Mong	34	1	35	43	78	7
	63	68	131	168	299	23

 Health, Welfare and Food Bureau Hong Kong Special Administrative Region						
Distribution of Retail Outlets –  New Territories						
District	No of Fresh Provision Shops			Poultry Stalls in FEHD Markets	No. of Poultry Retail Outlets	No. of FEHD Markets
	Private Premises	Public Housing Estates	Sub-total			
Sha Tin	10	37	47	8	55	2
Tai Po	1	10	11	20	31	2
North	0	7	7	17	24	4
Sai Kung	2	16	18	4	22	2
Tsuen Wan	3	4	7	49	56	5
Kwai Tsing	4	31	35	9	44	3
Tuen Mun	1	25	26	18	44	3
Yuen Long	13	7	20	15	35	3
Islands	2	4	6	6	12	3
	36	141	177	146	323	27

 Health, Welfare and Food Bureau Hong Kong Special Administrative Region						
Distribution of Retail Outlets by Region 						
Region	No of Fresh Provision Shops			Poultry Stalls in FEHD Markets	No. of Poultry Retail Outlets	No. of FEHD Markets
	Private Premises	Public Housing Estates	Sub-total			
Hong Kong Island	42	18	60	138	198	24
Kowloon	63	68	131	168	299	23
New Territories	36	141	177	146	323	27
Total	141	227	368	452	820	74

Personal Protective
Equipment for
persons involved in
the operation



Disinfection of
Vehicles after
Operation at
Poultry Farm



Removal of
Carcass from
Poultry Farm



Disposal of
Carcass at
Landfill



Department of Health's Role

- In the event of confirmed poultry and human case(s), DH will further step up measures, such as –
 - Epidemiological investigation, contact-tracing, medical surveillance of contacts
 - Risk communication with the media and the world
 - Tightening of port health measures (if import case is found)



Department of Health's Role

- When there are signs of human-to-human spread, DH will –
 - mobilize health centres and staff, rally support from the private medical sector to provide medical services for flu patients, and stop non-essential services
 - rally support from the community to support control measures
 - strengthen risk communication





Hospital Authority's Role

In the event of human infections, the Hospital Authority will take actions, like:-

- A central commanding committee will be set up to coordinate actions.
- Isolation of suspect cases
- Reduction of non-urgent services
- Promulgate anti-viral treatment to target groups



Thank you