



廚餘

FOOD WASTE

家居廚餘回收步驟

Domestic Food Waste Recycling Steps

1 去除非廚餘物質
Remove non-food waste



2 瀝乾水分
Drain liquid



**3 使用小型容器
將廚餘帶到回收點**

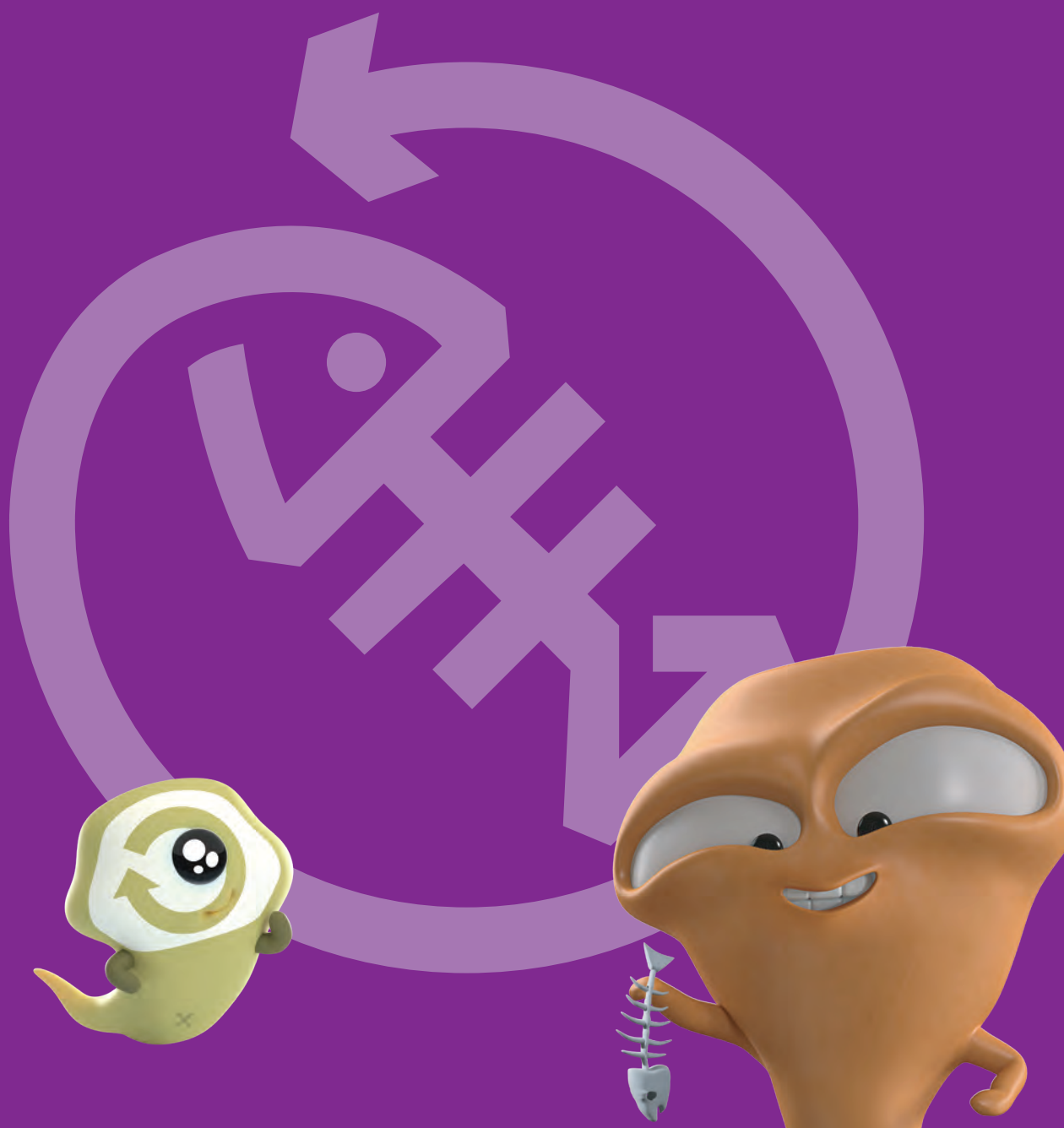
Use a small container to bring food waste to collection point



4 將廚餘倒入廚餘桶
Pour food waste into food waste bin

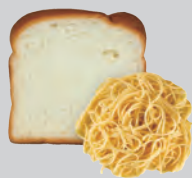


了解計劃詳情
Learn more about the Scheme
T 2838 3111
E fwc@epd.gov.hk



✓ 可回收 YES

生、熟、吃剩或變壞食物也是「可回收廚餘」。
Raw, cooked, leftover or spoiled food is 'recyclable food waste'.



穀物
Wheat & Grains
米飯、粉麵、麵粉、
麵包、燕麥
Rice, pasta/noodles,
flour, bread, oats



蔬果
Fruits & Vegetables
水果、蔬菜、菇類、
豆類及其製品
(包括皮、核、種子)
Fruits, vegetables,
mushrooms, beans &
their products (including
peelings, cores, pips)



肉類
Meats
豬肉、牛肉、海產、
家禽及其製品
(包括內臟、魚鱗、
小骨頭)
Pork, beef, seafood,
poultry & their products
(including innards,
scales, small bones)



殘渣
Residues
茶葉渣、湯渣、
咖啡渣、中藥渣
Tea leaves, soup pulp,
coffee grounds,
chinese medicinal pulp



其他
Others
乳製品、甜品、
堅果、醬料、
寵物食品
Dairy products,
desserts, nuts,
sauces, pet food

✗ 不接受 NO

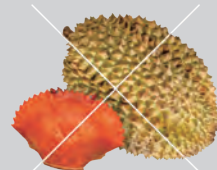
如不確定能否回收，請詢問工作人員或避免放入廚餘桶。
If you have doubt, please ask staff or avoid putting it into food waste bin.



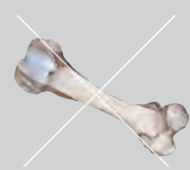
惰性物料
Inert Materials
包裝袋、飲管、罐頭、
餐具/餐盒、玻璃樽、
茶包、紙巾、牙籤
Packaging, straws, cans,
utensils/containers,
glass bottles, teabags,
tissue paper, toothpicks



水分過多
Watery Food
湯、粥、飲品
Soup, porridge, drinks



過硬物料
Hard Materials
貝殼、蟹蓋、
榴槿殼、粟米芯、
椰青、芒果核
Seashells, crab covers,
durian shells, corncobs
young coconuts,
mango cores



過大物料
Oversized Materials
豬筒骨、斧頭扒骨
Pork femur bones,
tomahawk ribs



其他
Others
枝葉、雜草、切花、
節日植物、藥物、口罩
Branches, leaves/weeds,
cut flowers, festive
plants, medicines,
surgical masks

廚餘例子未能盡錄 Food waste examples are not exhaustive



環境保護署
Environmental
Protection Department