



廚餘

FOOD WASTE



工商廚餘回收步驟

Commercial & Industrial Food Waste Recycling Steps

1 去除非廚餘物質
Remove non-food waste



2 瀝乾水分
Drain liquid



3 直接或經小型容器倒入廚餘桶

Pour food waste directly or via a small container into food waste bin

可回收 YES

生、熟、吃剩或變壞食物也是「可回收廚餘」。
Raw, cooked, leftover or spoiled food is 'recyclable food waste'.



穀物
Wheat & Grains
米飯、粉麵、麵粉、麵包、燕麥
Rice, pasta/noodles, flour, bread, oats



蔬果
Fruits & Vegetables
水果、蔬菜、菇類、豆類及其製品 (包括皮、核、種子)
Fruits, vegetables, mushrooms, beans & their products (including peelings, cores, pips)



肉類
Meats
豬肉、牛肉、海產、家禽及其製品 (包括內臟、魚鱗、小骨頭)
Pork, beef, seafood, poultry & their products (including innards, scales, small bones)



殘渣
Residues
茶葉渣、湯渣、咖啡渣、中藥渣
Tea leaves, soup pulp, coffee grounds, chinese medicinal pulp



其他
Others
乳製品、點心、糕餅、堅果、醬料
Dairy products, dim sums, pastries, nuts, sauces

不接受 NO

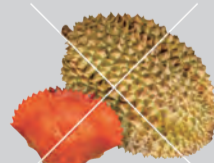
如不確定能否回收，請詢問工作人員或避免放入廚餘桶。
If you have doubt, please ask staff or avoid putting it into food waste bin.



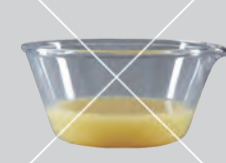
一般垃圾
General Waste
手套、紙巾、飲管、牙籤、煙頭、口罩
Gloves, tissue paper, straws, toothpicks, cigarette butts, surgical masks



食物包裝
Food Packaging
膠袋、包裝袋、餐具/餐盒、錫紙、罐頭、玻璃樽、繩索
Plastic bags, packaging, utensils/containers, aluminum foils, cans, glass bottles, ropes



過硬物料
Hard Materials
大骨頭、貝殼、蟹蓋、龍蝦殼、榴槿殼、椰青、粟米芯、芒果核
Large bones, seashells, crab covers, lobster shells, durian shells, young coconuts, corncobs, mango cores



水分過多
Watery Food
湯、粥、飲品
Soup, porridge, drinks



其他
Others
隔油池及集水溝的廢物、園林廢物、醫療廢物
Grease trap & gulley waste, yard waste & clinical waste



了解計劃詳情
Learn more about the Scheme
T 2838 3111
E fwc@epd.gov.hk

廚餘例子未能盡錄 Food waste examples are not exhaustive



環境保護署
Environmental Protection Department