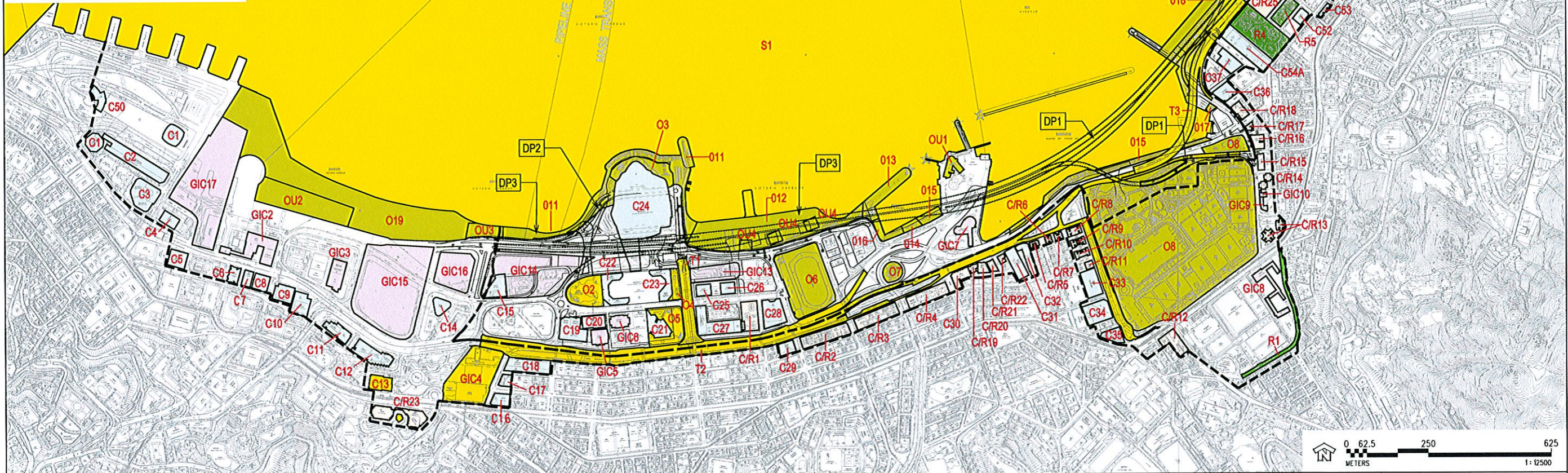


KEY FOR VSRs

- | | | | | |
|--|---|--|---|--|
| C1 International Finance Centre | C/R1 Causeway Centre | GIC8 Queen's College | OU1 Royal Hong Kong Yacht Club | S1 Harbour Traffic |
| C2 Hong Kong Station Development Phase 2 | C/R2 160-169 Gloucester Road | GIC9 Hing Fat Street Post Office | OU2 Planned Waterfront Related Commercial and Leisure Uses (CDE4) | T1 Wanchai North Road Network - vehicular - pedestrian |
| C3 Exchange Square | C/R3 210-226 Gloucester Road | GIC10 Victoria Park School for the Deaf | OU3 Planned Waterfront Related Commercial and Leisure Uses (CDE9) | T2 Gloucester Road Corridor - vehicular - pedestrian |
| C4 Jardine House | C/R4 Elizabeth House | GIC11 YMCA | OU4 Planned Waterfront Related Commercial and Leisure Use (East - WDI/13, WDI/14, WDI/17) | T3 Island Eastern Corridor |
| C5 Mandarin Hotel | C/R5 Riviera Mansion | GIC12 Electric Road Municipal Services Building | R1 Residential Properties fronting Tung Lo Wan Road | |
| C6 Hong Kong Club | C/R6 Prospect Mansion | GIC13 Railway Station WDI/15, Harbour Road Sports Centre and Wan Chai Swimming Pool re-provisioned above the railway station | R4 Harbour Heights | |
| C7 Ritz Carlton Hotel | C/R7 Miami Mansion | GIC14 Planned Hong Kong Academy of Performing Arts | R5 Residential Properties fronting King Wah Road | |
| C8 AIA Tower | C/R8 Marco Polo Mansion | GIC15 Planned Central Government Complex (CDE8) | R6 City Garden | |
| C9 Hutchison House | C/R9 Victoria Park Mansion | GIC16 Planned Government Complex (CDE10) | R7 Provident Garden | |
| C10 Bank of America Tower | C/R10 Chesterfield Mansion | GIC17 Planned CDA Development (CDE3) | | |
| C11 Far East Financial Centre | C/R11 Greenfield Mansion | O2 HKKEC Open Space | | |
| C12 Admiralty Centre | C/R12 Properties fronting Causeway Road | O3 HKKEC Extension Open Space and Promenade | | |
| C13 United Centre | C/R13 Park Towers | O4 Renaissance Harbour View Plaza | | |
| C14 CITIC Tower | C/R14 Viking Garden | O5 Central Plaza Open Space | | |
| C15 Fleet Arcade | C/R15 50-52 Hing Fat Street | O6 Wanchai Sports Ground | | |
| C16 Asian House | C/R16 Mayson Garden Building | O7 Tunnel Approach Rest Garden | | |
| C17 Chung Nam Building | C/R17 Gordon House | O8 Victoria Park | | |
| C18 Fleet House, Harcourt House | C/R18 Belle House | O9 Tsim Sha Tsui Waterfront Promenade | | |
| C19 Telecom House, Hong Kong Arts Centre, Harbour View International House | C/R19 Top Glory Tower | O11 Planned Street Market with Outdoor Performance Area | | |
| C20 Shui On Centre | C/R20 Hoi Kung Court | O12 Planned Waterfront Regional Open Space | | |
| C21 Central Plaza | C/R21 Hoi To Court | O13 Planned Kiosks and Leisure Boat Landing Area | | |
| C22 Grand Hyatt Hotel | C/R22 Hoi Deen Court | O14 Planned Water Sports Centre | | |
| C23 Renaissance Harbour View Hotel | C/R23 Pacific Place Complex | O15 Planned Boardwalk | | |
| C24 Hong Kong Convention and Exhibition Centre | C/R24 Planned CDA at North Point | O16 Planned Harbour Education Centre | | |
| C25 Great Eagle Centre | C/R25 Planned CDA(1) at North Point | O17 Planned Local Open Space | | |
| C26 Harbour Centre | GIC3 PLA Headquarters at Tamar | O18 Planned Waterfront Park | | |
| C27 China Resources Building | GIC4 Hong Kong Police Force Headquarters, May House | O19 Planned Regional Open Space (CDE2) | | |
| C28 Sun Hung Kai Centre | GIC5 Revenue Tower | | | |
| C29 AXA Centre | GIC6 Wan Chai Tower | | | |
| C30 Sino Plaza | GIC7 Police Officers' Club | | | |

LEGEND

- PLANNING AND ENGINEERING REVIEW
- TUDY AREA BOUNDARY
- LIMIT OF PRIMARY ZONE OF VISUAL INFLUENCE
- BOUNDARY OF KEY VSRs
- C1 COMMERCIAL
- COMMERCIAL / RESIDENTIAL
- RESIDENTIAL
- RECREATIONAL
- GOVERNMENT / INSTITUTION / COMMUNITY
- TRANSPORT
- DP1 CENTRAL-WANCHAI BYPASS (CWB) INCLUDING ITS ROAD TUNNEL AND SLIP ROADS
- DP2 ROAD P2 AND OTHER ROADS WHICH ARE CLASSIFIED AS PRIMARY/DISTRICT DISTRIBUTOR ROADS
- DP3 RECLAMATION WORKS INCLUDING ASSOCIATED DREDGING WORKS



WAN CHAI DEVELOPMENT PHASE II - PLANNING AND ENGINEERING REVIEW

KEY VSRs AND PRIMARY ZONE OF VISUAL INFLUENCE DURING OPERATION

FIGURE 10.4A