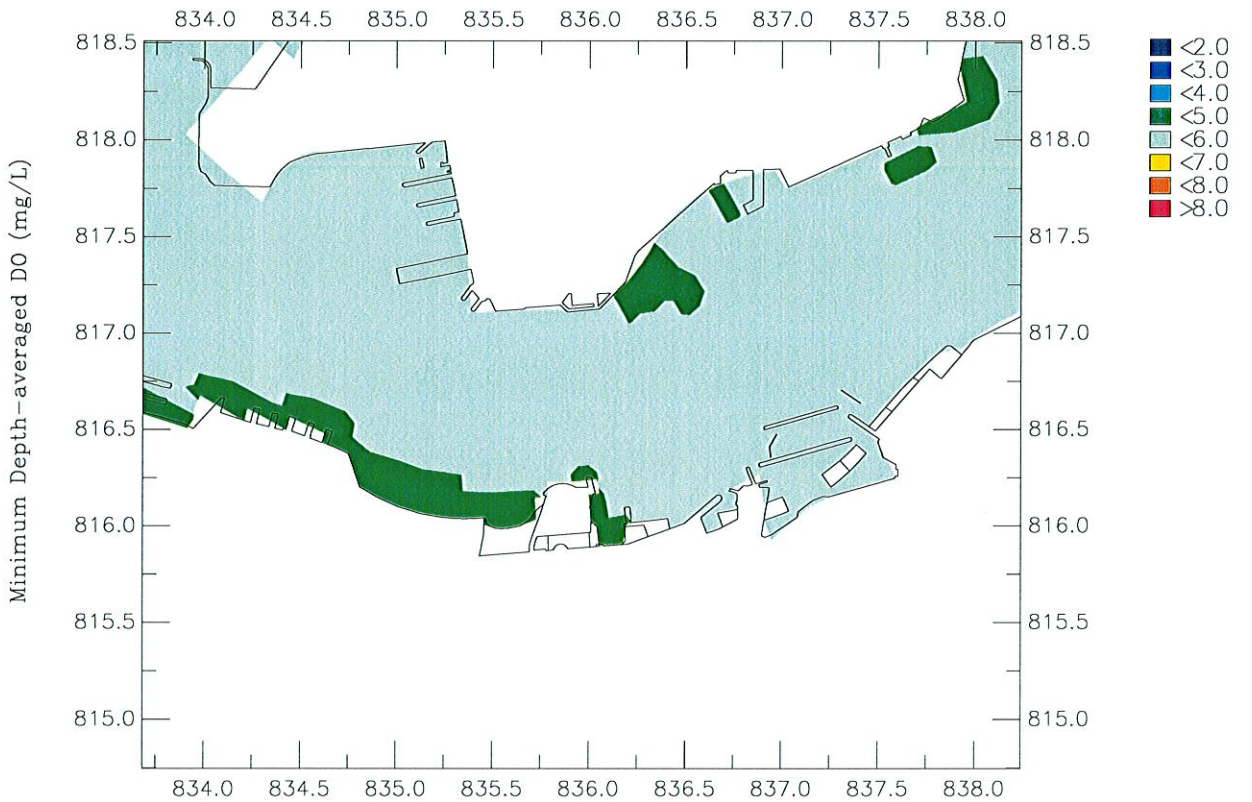
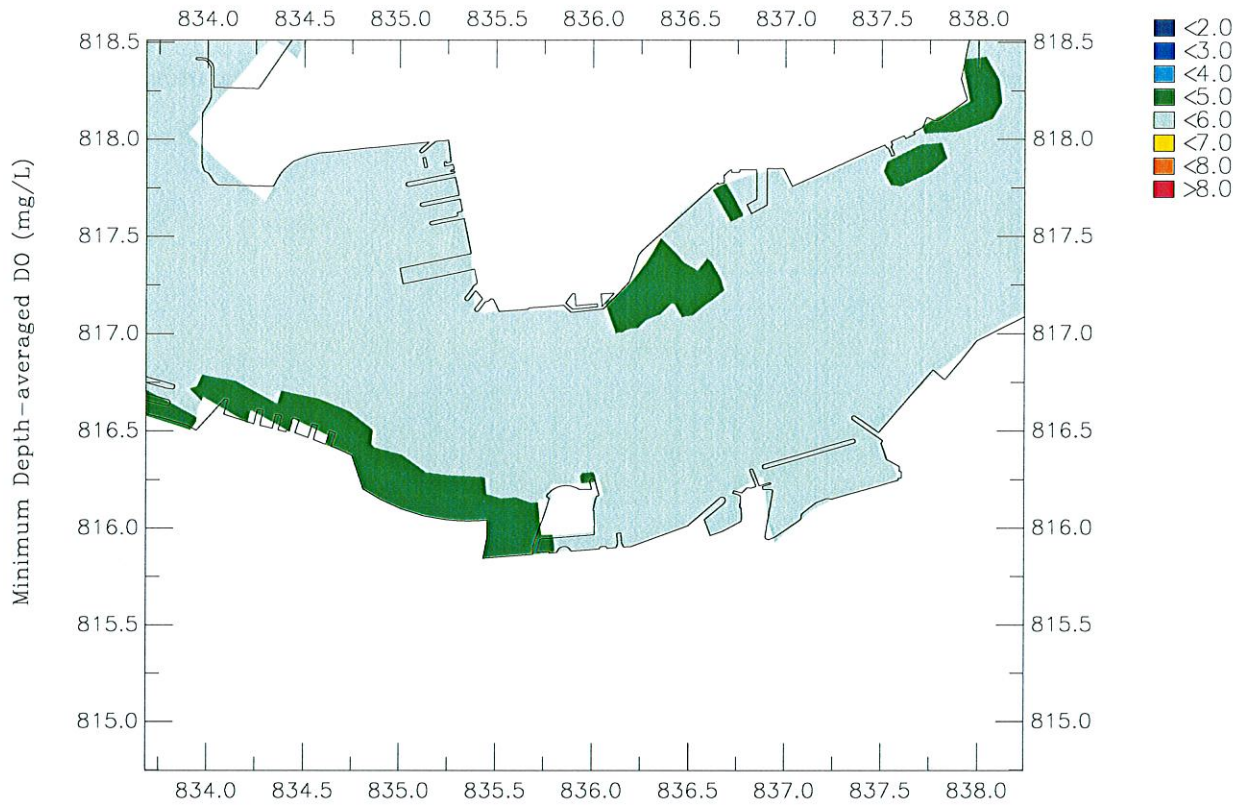


Appendix 5.10d
Construction Phase Water Quality
Modelling Results -
Scenario 3C - Wet Season



Agreement No. CE 54/2001 (CE) Wan Choi Development Phase II: Planning And Engineering Review

Minimum Depth-averaged Dissolved Oxygen Concentration

Top: Baseline; Bottom: Interim Construction Scenario 3C

Figure 1.4

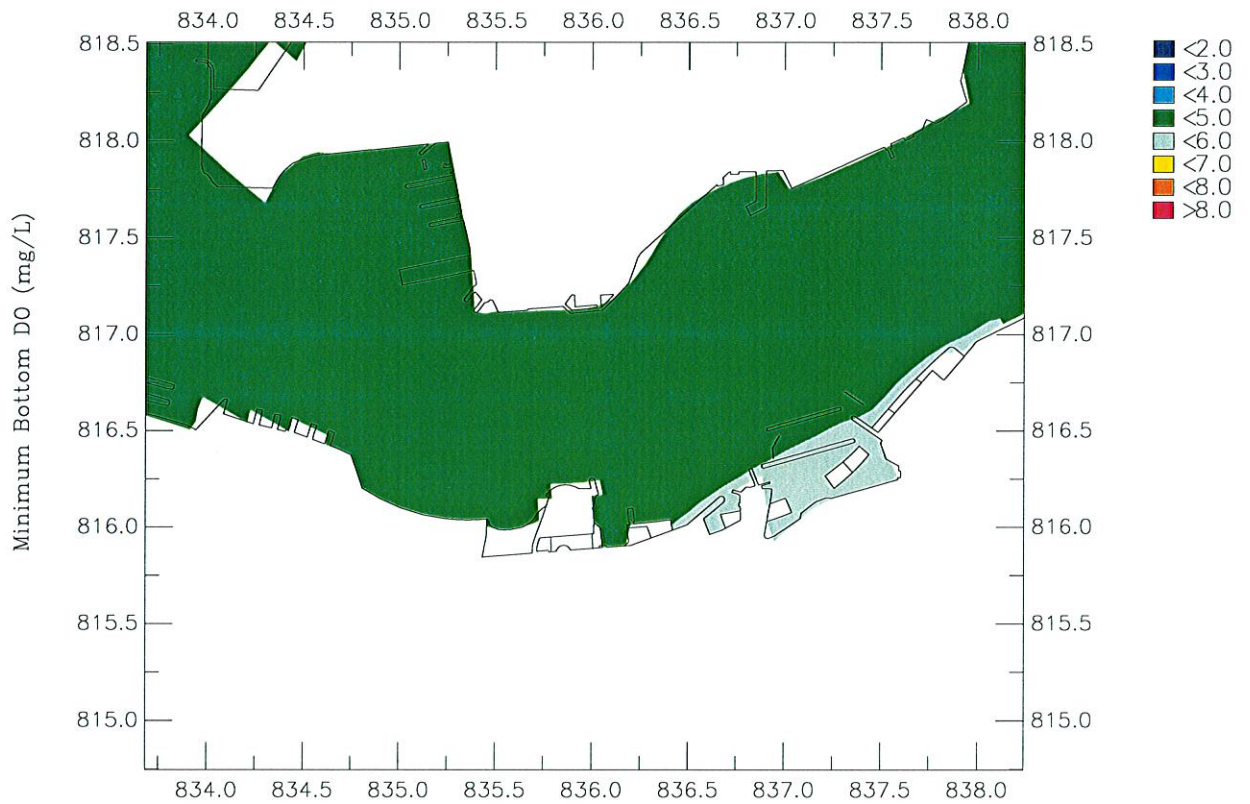
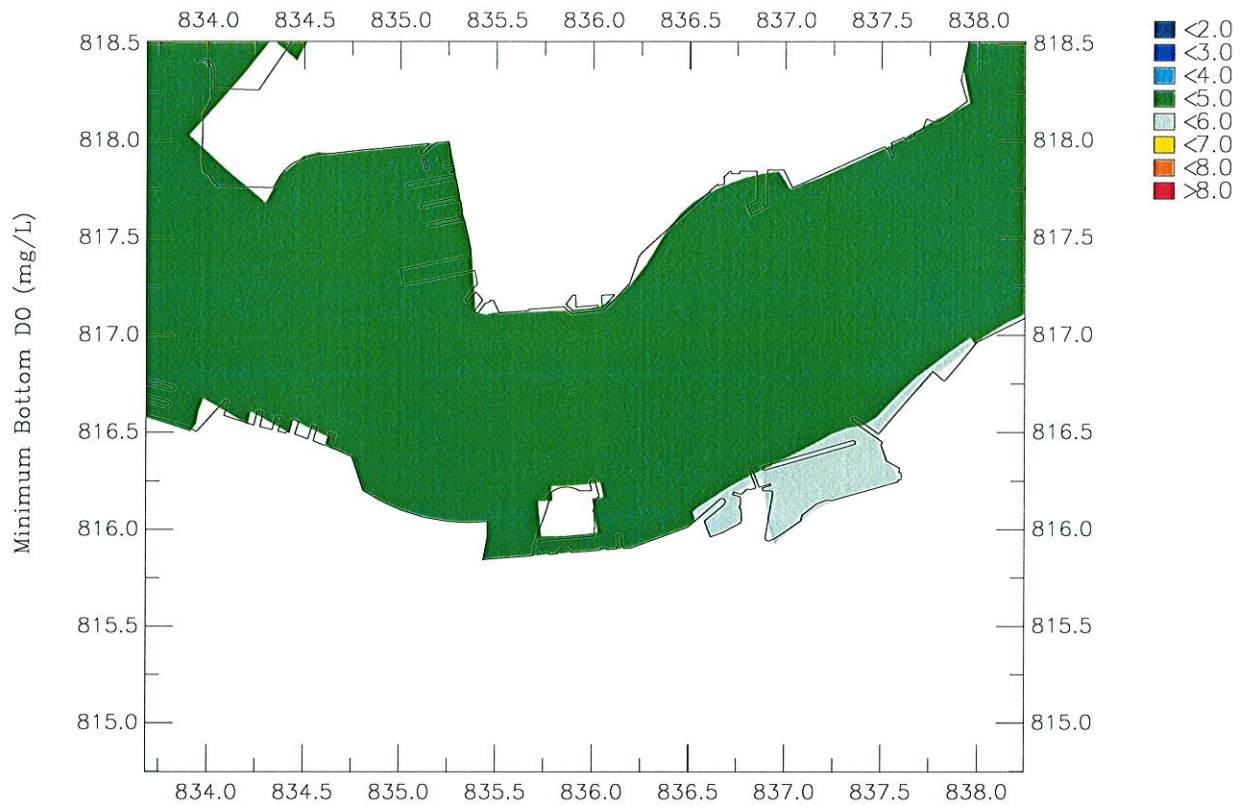
Oct 2006

Wet Season

Maunsell

WQ/Detailed/2009/Plot

MIN-DA-DO.ssr



Agreement No. CE 54/2001 (CE) Wan Chai Development Phase II: Planning And Engineering Review

Minimum Bottom Dissolved Oxygen Concentration

Top: Baseline; Bottom: Interim Construction Scenario 3C

Figure 2.4

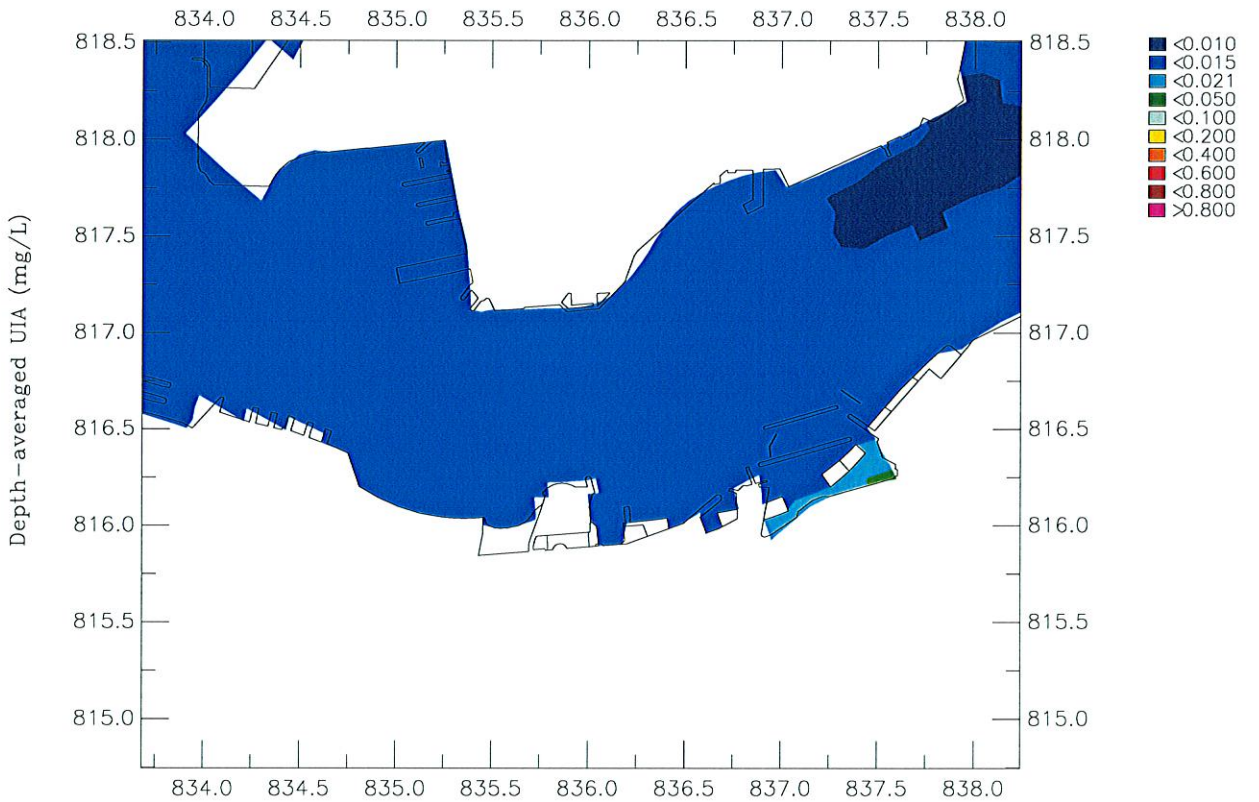
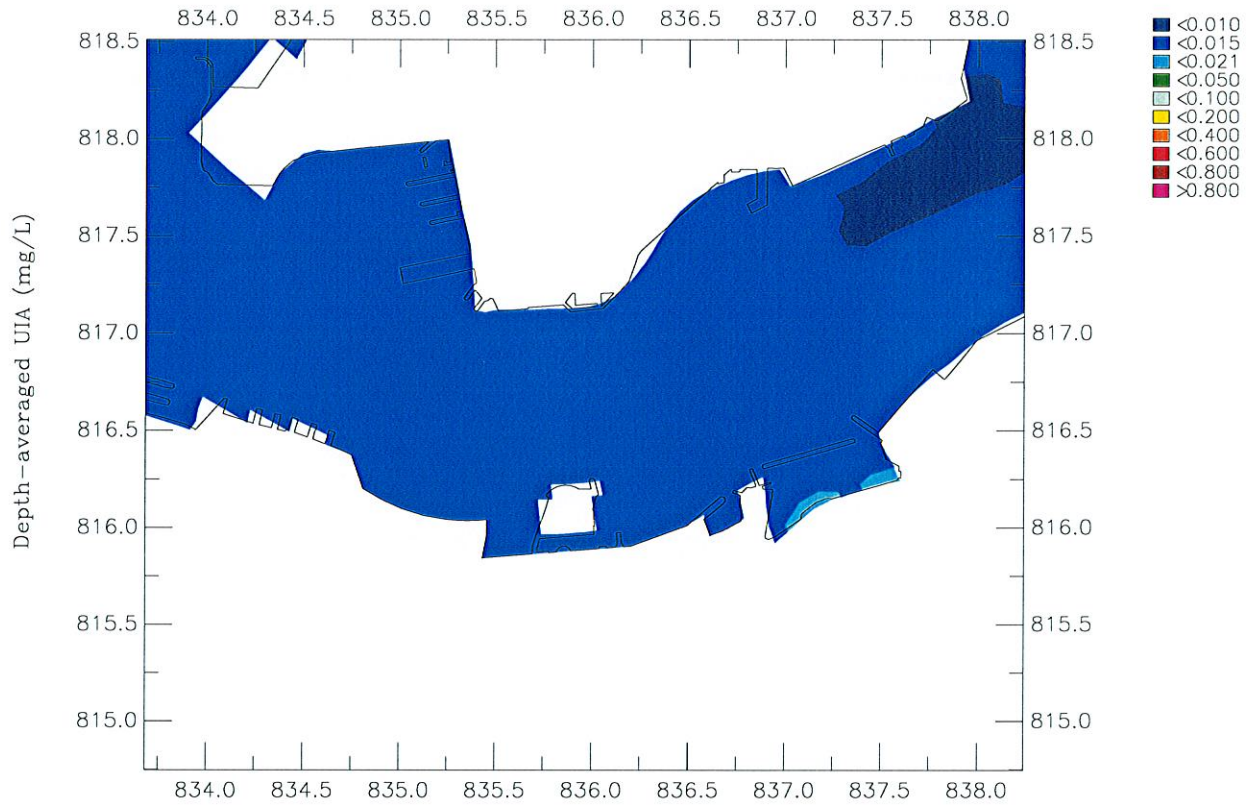
Oct 2006

Wet Season

Maunsell

WQ/Detailed/2009/Plot

MIN-Bottom-DO.ssn



Agreement No. CE 54/2001 (CE) Wan Chai Development Phase II: Planning And Engineering Review

Depth-averaged Unionised Ammonia Concentration

Top: Baseline; Bottom: Interim Construction Scenario 3C

Figure 3.4

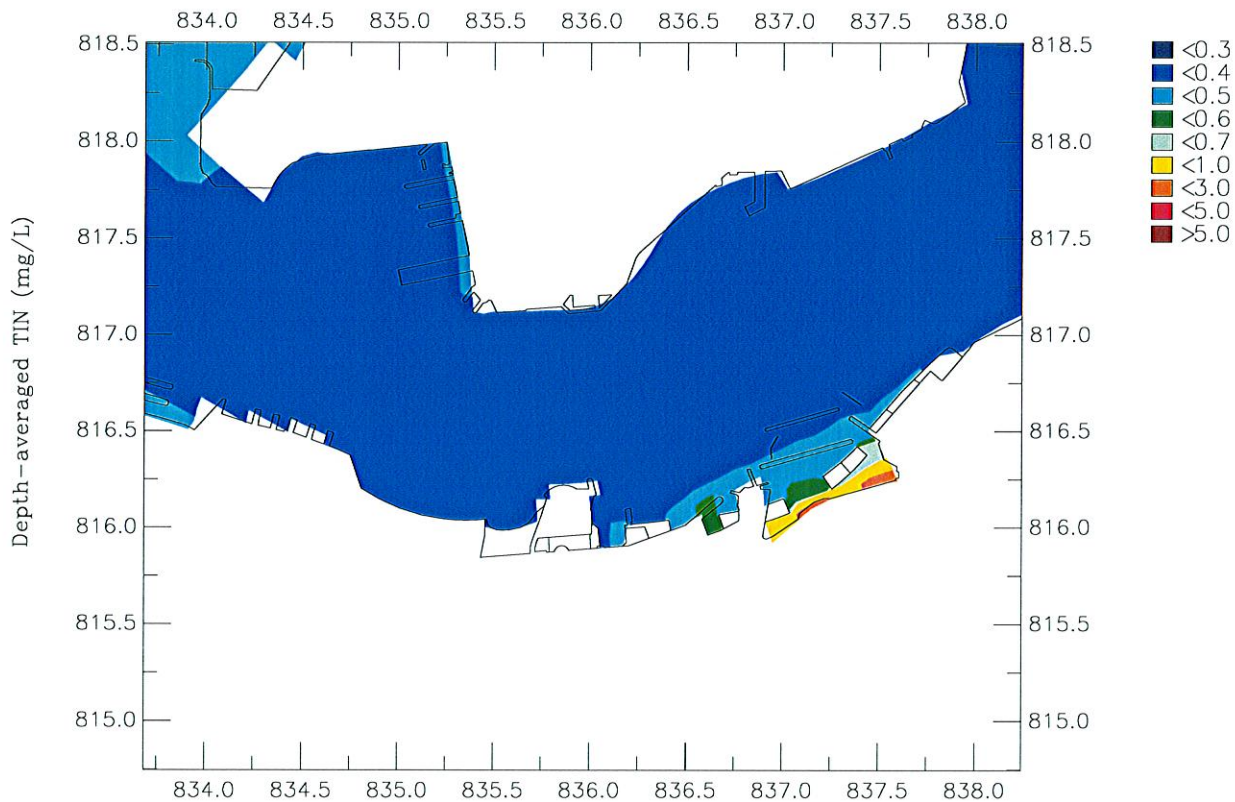
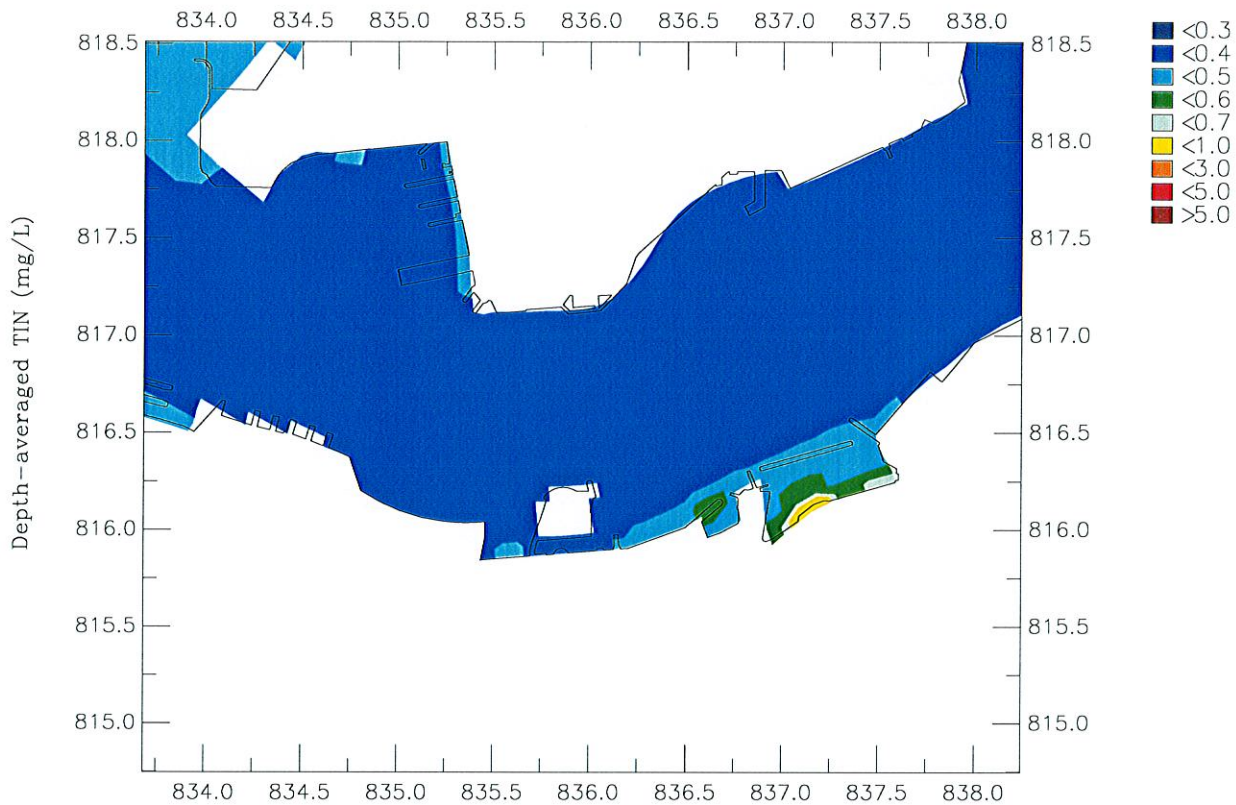
Oct 2006

Wet Season

Maunsell

WQ/Detailed/2009/Plot

DA-UJA.ssn



Agreement No. CE 54/2001 (CE) Wan Choi Development Phase II: Planning And Engineering Review

Depth-averaged Total Inorganic Nitrogen Concentration

Top: Baseline; Bottom: Interim Construction Scenario 3C

Figure 4.4

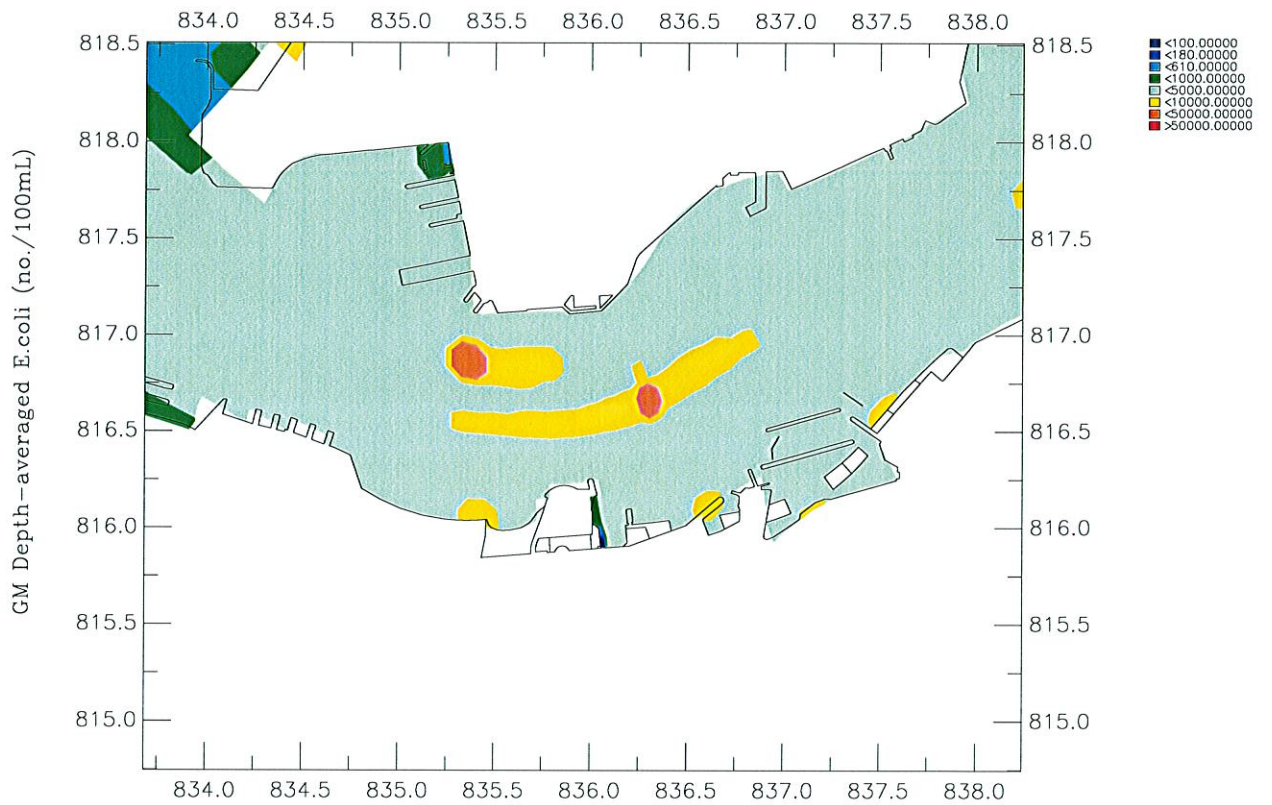
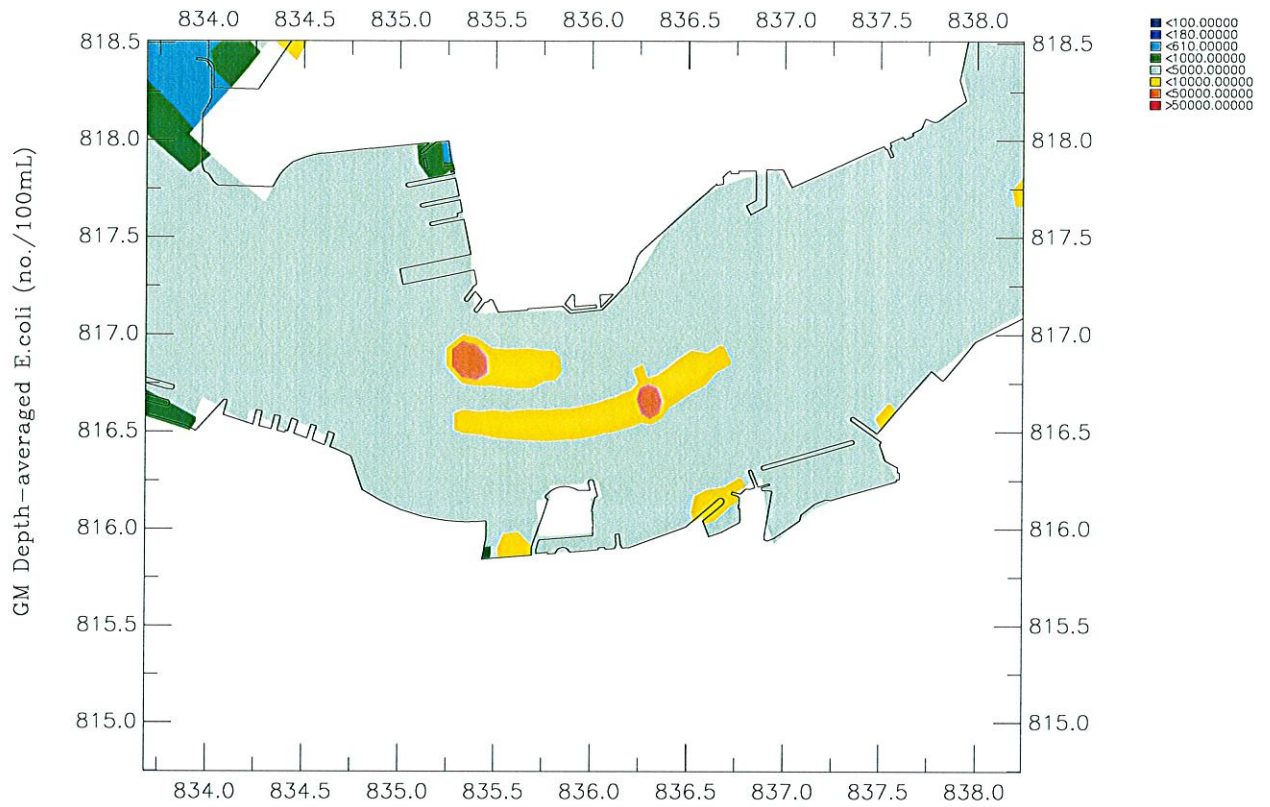
Oct 2006

Wet Season

Maunsell

WQ/Detailed/2009/Plot

DA-TIN.ssn



Agreement No. CE 54/2001 (CE) Wan Chai Development Phase II: Planning And Engineering Review

Geometric Mean Depth-averaged E.coli Concentration

Top: Baseline; Bottom: Interim Construction Scenario 3C

Figure 5.4

Oct 2006

Wet Season

Mounsell

WQ/Detailed/2009/Plot

GM-Ecoli.ssn