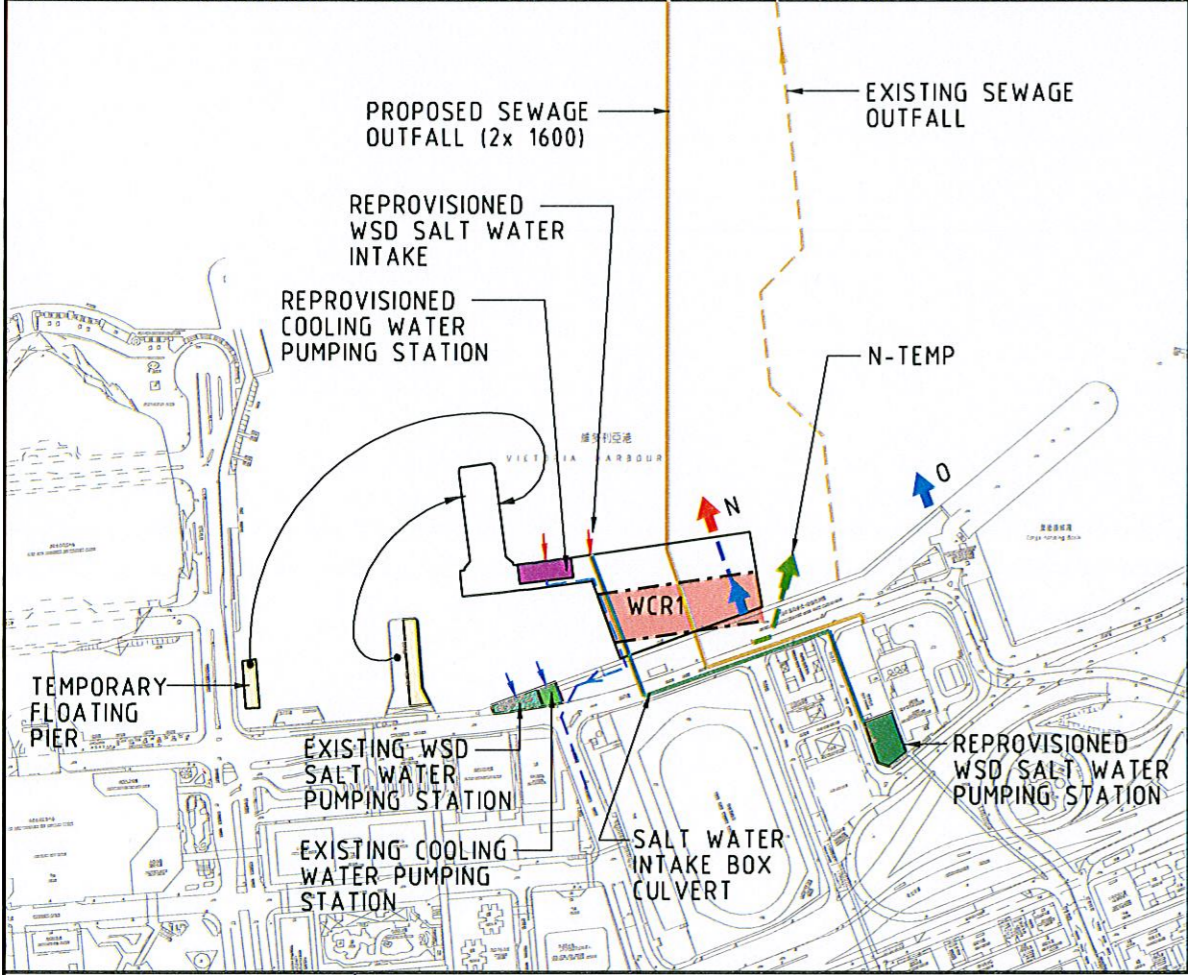


WAN CHAI RECLAMATION

EARLY 2009 TO EARLY 2010

- DIVERSION OF EXISTING FERRY SERVICE AT THE EAST BERTH OF WAN CHAI FERRY PIER TO A TEMPORARY FLOATING PIER
- DIVERSION OF OUTFALL N TO TEMPORARY OUTFALL (N-TEMP) TO THE EAST OF WCR1 RECLAMATION
- WCR1 RECLAMATION
- CONSTRUCTION OF NEW FERRY PIER
- CONSTRUCTION OF NEW SEWAGE OUTFALL AT HARBOUR AREA AND ON EXISTING LAND
- CONSTRUCTION OF REPROVISIONED WSD SALT WATER PUMPING STATION AND ITS INTAKE BOX CULVERT (LAND SIDE)
- CONSTRUCTION OF COOLING WATER PUMPING CHAMBERS AT NEW SEAWALL



EARLY 2010 TO EARLY 2011

- CWB TUNNEL CONSTRUCTION AT WCR1
- CONSTRUCTION OF SEWAGE OUTFALL AT SEASIDE AND ON RECLAIMED PART OF WCR1 RECLAMATION
- CONSTRUCTION OF COOLING WATER MAINS (SHK CENTRE)
- CONSTRUCTION OF NEW SALT WATER INTAKE BOX CULVERT
- CONSTRUCTION OF PERMANENT CULVERT N
- DIVERSION OF ALL EXISTING FERRY SERVICE TO THE NEW WAN CHAI FERRY PIER
- COMMISSIONING OF COOLING WATER MAINS SYSTEM (SHK CENTRE)
- COMMISSIONING OF SALT WATER INTAKE SYSTEM

LEGEND:

- EXISTING COOLING WATER INTAKE/ EXISTING WSD SALT WATER INTAKE
- EXISTING STORM WATER OUTFALL
- REPROVISIONED COOLING WATER INTAKE/ REPROVISIONED WSD SALT WATER INTAKE
- REPROVISIONED STORM WATER OUTFALL
- TEMPORARY COOLING WATER INTAKE
- NEW COOLING WATER/SALT WATER CHAMBER
- NEW BOX CULVERT
- TEMPORARY DRAINAGE OUTFALL DIVERSION
- DIVERTED COOLING WATER INTAKE PIPELINES (PERMANENT)
- TEMPORARY COOLING WATER PIPELINES
- RECLAMATION IN THE PERIOD
- CWB TUNNEL CONSTRUCTION IN THE PERIOD
- CWB TUNNEL (COMPLETED)

DATE: 2007-8-2 19:30:08