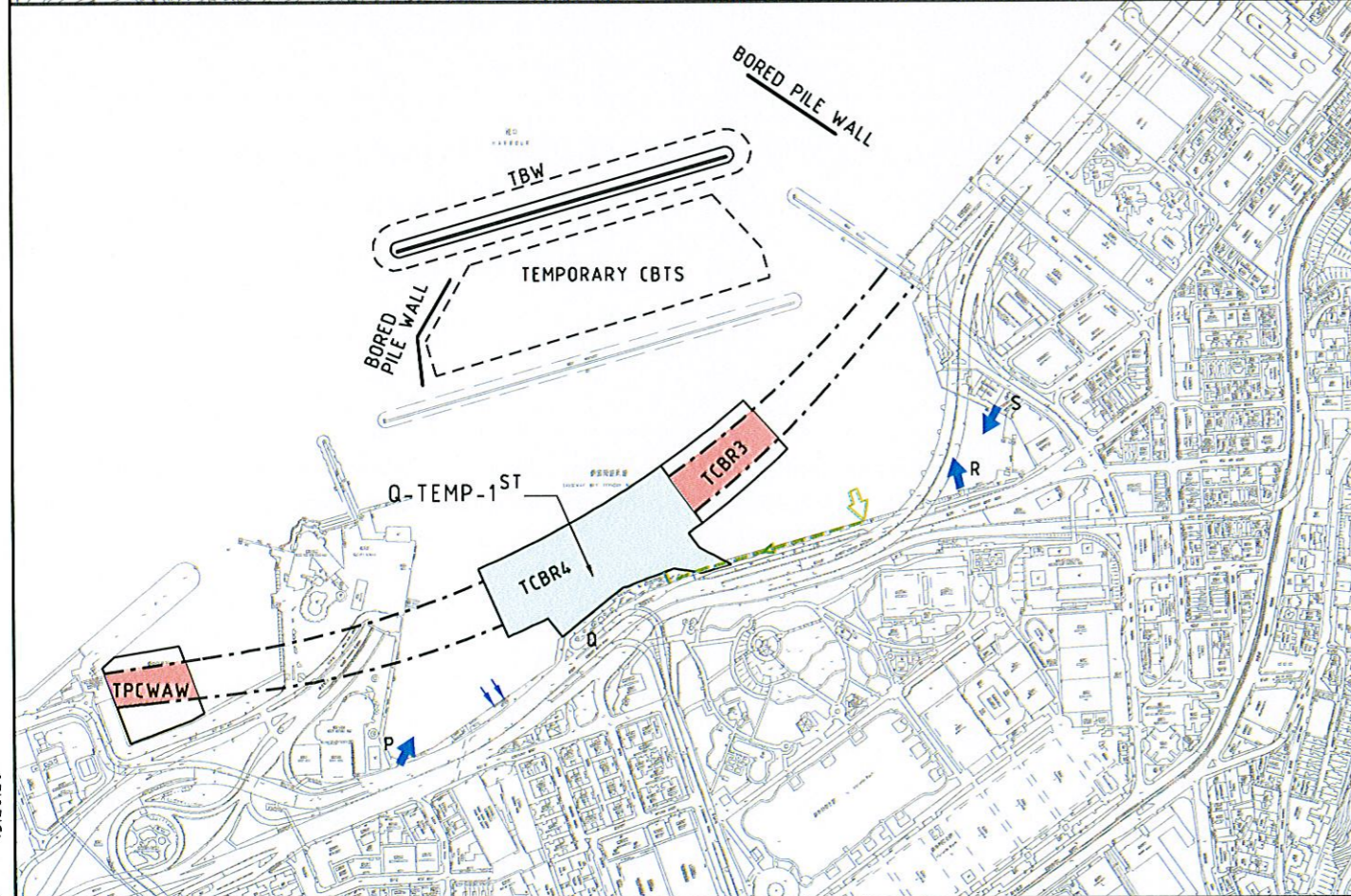


### EARLY 2011 TO MID 2012

- TCBR1E RECLAMATION REMOVAL AFTER CWB TUNNEL IN TCBR1E COMPLETE
- TEMPORARY DIVERSION OF COOLING MAIN & INTAKE (WINDSOR HOUSE)
- COMMISSIONING OF DIVERTED COOLING MAIN & INTAKE
- TCBR3 RECLAMATION
- CWB TUNNEL CONSTRUCTION AT TPCWAE
- CWB TUNNEL CONSTRUCTION AT TCBR1W
- CWB TUNNEL CONSTRUCTION AT TCBR2
- CWB TUNNEL UNDER CROSS HARBOUR TUNNEL PORTAL AREA (XHT)

### LEGEND:

- EXISTING COOLING WATER INTAKE
- EXISTING STORM WATER OUTFALL
- REPROVISIONED COOLING WATER INTAKE
- REPROVISIONED STORM WATER OUTFALL
- TEMPORARY COOLING WATER INTAKE
- NEW COOLING WATER/SALT WATER CHAMBER
- NEW BOX CULVERT
- TEMPORARY DRAINAGE OUTFALL DIVERSION
- DIVERTED COOLING WATER INTAKE PIPELINES (PERMANENT)
- TEMPORARY COOLING WATER PIPELINES
- RECLAMATION IN THE PERIOD
- CWB TUNNEL CONSTRUCTION IN THE PERIOD
- CWB TUNNEL (COMPLETED)



### MID 2012 TO LATE 2012

- TCBR1W RECLAMATION REMOVAL IN EARLY 2012
- TCBR2 RECLAMATION REMOVAL IN EARLY 2012
- TPCWAE RECLAMATION REMOVAL IN EARLY 2012
- DIVERSION OF CULVERT Q TO TEMPORARY CULVERT (Q-TEMP-1<sup>ST</sup>) DISCHARGING TO EASTERN HALF OF TCBR4
- TCBR4 RECLAMATION (FROM WEST TO EAST)
- TPCWAW RECLAMATION
- CWB TUNNEL CONSTRUCTION AT TCBR3
- CWB TUNNEL CONSTRUCTION AT TPCWAW

DATE: 2007-8-3 15:20:20