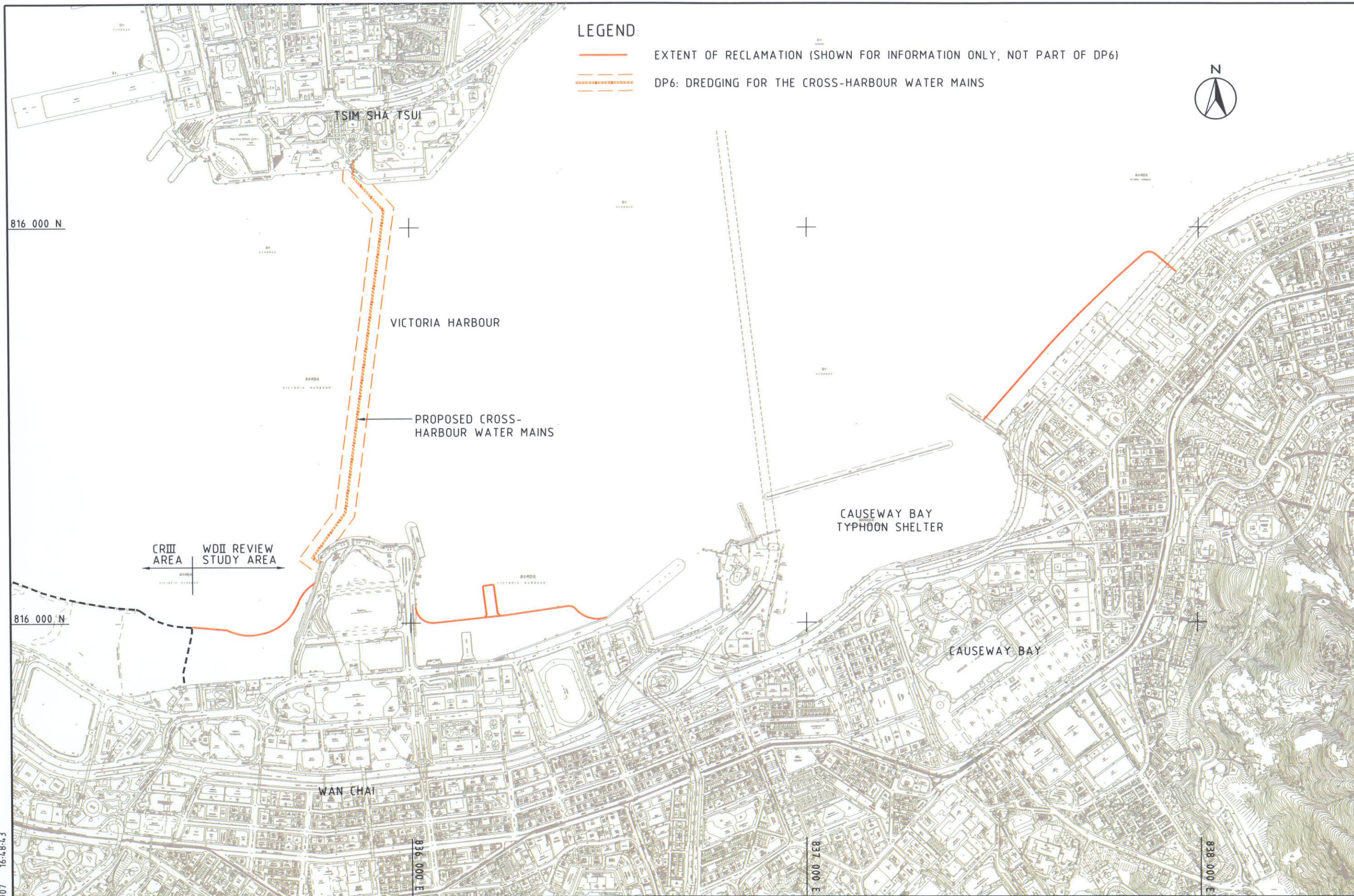


LEGEND:

- EXTENT OF RECLAMATION (SHOWN FOR INFORMATION ONLY, NOT PART OF DP6)
- - - DP6: DREDGING FOR THE CROSS-HARBOUR WATER MAINS



DATE: 31/08/2007 16:48:43

MAUNSELL | AECOM
Maunsell Consultants Asia Ltd

WAN CHAI DEVELOPMENT PHASE II - PLANNING AND ENGINEERING REVIEW

DESIGNATED PROJECT 6 -
DREDGING FOR THE CROSS-HARBOUR WATER MAINS FROM WAN CHAI TO TSIM SHA TSUI

FIGURE 12f