

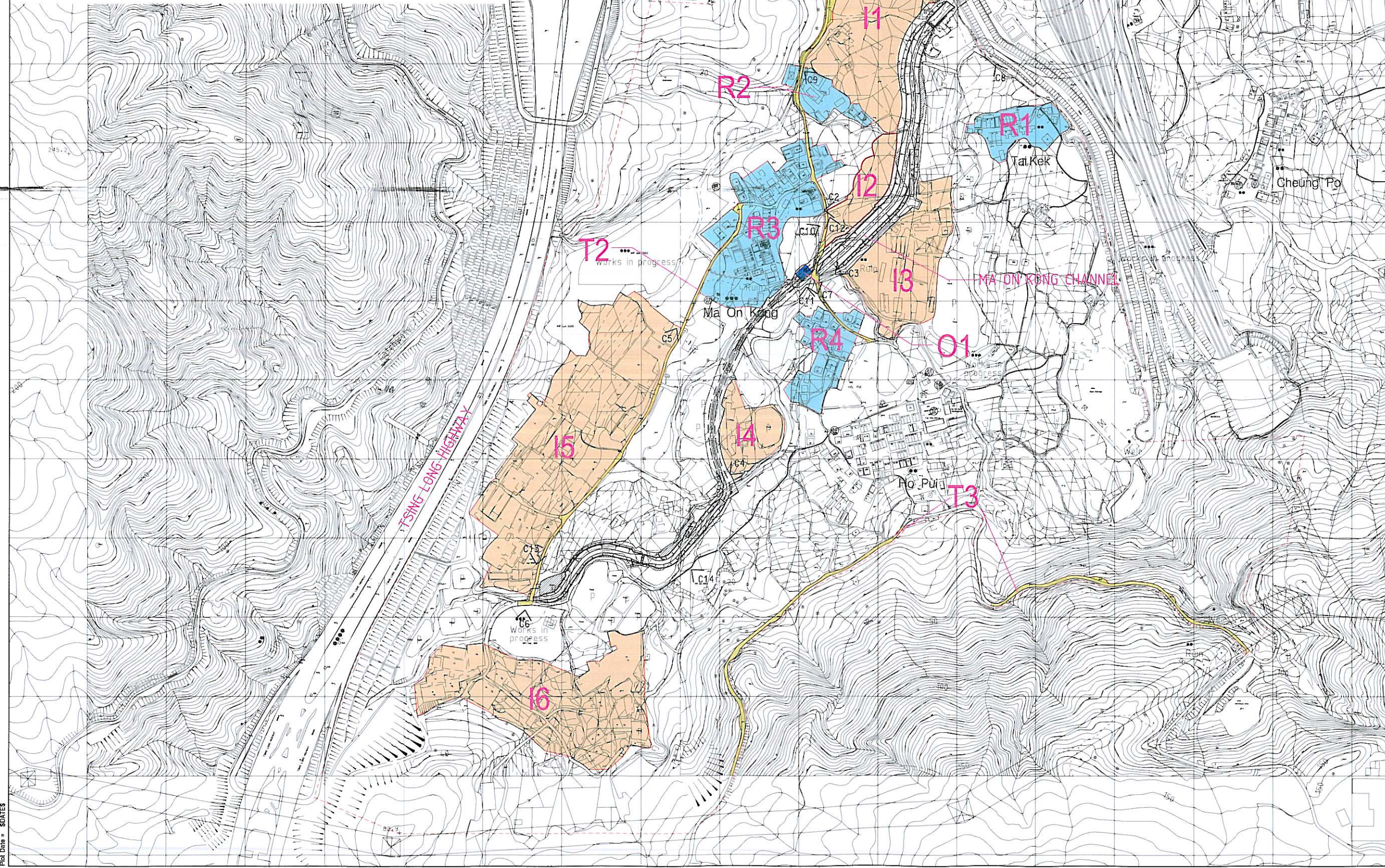
SCHEDULE OF VSRs

VSR CODE	VSR
I1	Open Storage near junction between Kam Ho Road and village access road
I2	Plant Nursery at the east of Ma On Kong Channel
I3	Plant Nursery at the west of Ma On Kong Channel
I4	Temporary Structure for poultry east to Ho Pui
I5	Open Storage at the end of village access road
I6	Temporary Structure for poultry and Open Storage at upstream of Ma On Kong
O1	Users of Sitting-out area at Ma On Kong
R1	Tai Kek
R2	North of Ma On Kong
R3	Ma On Kong
R4	North of Ho Pui
T1	Motorists and Pedestrians along village access road (lower section)
T2	Motorists and Pedestrians along village access road (upper section)
T3	Motorists, Pedestrians and Tourists along access road toward Ho Pui Reservoir

Yuen Long San Tsuen
 Copyright by Black & Veatch Hong Kong Limited and Government of HKSAR

- NOTES :
- ALL DIMENSIONS ARE IN MILLIMETRES UNLESS STATED OTHERWISE.
 - GRID LINES ARE HONG KONG METRIC GRID 1980.
 - TYPE 2 RAILING WITH DEBRIS TRAP BAR AND GENERAL MESH FILL SHALL BE PROVIDED AT BOTH SIDES OF THE CHANNEL BANKS

- LEGEND :
- SITE BOUNDARY
 - PROPOSED CHANNEL
 - PROPOSED SLOPE
 - VSRs
 - BOUNDARY OF ZONE OF VISUAL INFLUENCE
 - PHOTO TAKING POINT WITH PHOTO NO.



Reviser	Date	GENERAL REVISION			
Initial	Designed	Checked	Drawn	Checked	
	BW	JT	SC	JT	
Date	8/05	8/05	8/05	8/05	

Contract no. CE 6798
 Contract title
 YUEN LONG, KAM TIN, NGAU TAM MEI & TIN SHUI WAI DRAINAGE IMPROVEMENT, STAGE 1 PHASE 2B - KAM TIN

Drawing title
 MA ON KONG CHANNEL KT13 VSRs BASELINE FOR PRIMARY ZVI

Drawing no.	Scale
V-001	1:2500 A1 1:5000 A3

香港特別行政區政府渠務署
 THE GOVERNMENT OF THE HONG KONG SPECIAL ADMINISTRATIVE REGION
 DRAINAGE SERVICES DEPARTMENT

BLACK & VEATCH HONG KONG LIMITED
 博威工程顧問有限公司

Plot Date = 5/04/05