

- NOTES :
1. ALL DIMENSIONS ARE IN MILLIMETRES UNLESS STATED OTHERWISE.
 2. GRID LINES ARE HONG KONG METRIC GRID 1980.
 3. TYPE 2 RAILING WITH DEBRIS TRAP BAR AND GENERAL MESH FILL SHALL BE PROVIDED AT BOTH SIDES OF THE CHANNEL BANKS

- LEGEND :
- SITE BOUNDARY
 - - - - STUDY BOUNDARY
 - PROPOSED CHANNEL
 - PROPOSED SLOPE

- INTENSITY OF RESIDUE IMPACT ON LANDSCAPE CHARACTER:
- Substantial - Positive
 - Moderate - Positive
 - Slight - Positive
 - Insubstantial
 - Slight - Negative
 - Moderate - Negative
 - Substantial - Negative

Revision	Date	Description		Initial	
		Designed	Checked	Drawn	Checked
Initial	BW	JT	SC	JT	
Date	08/05	08/05	08/05	08/05	08/05
Approved					

Contract no. CE 67/98

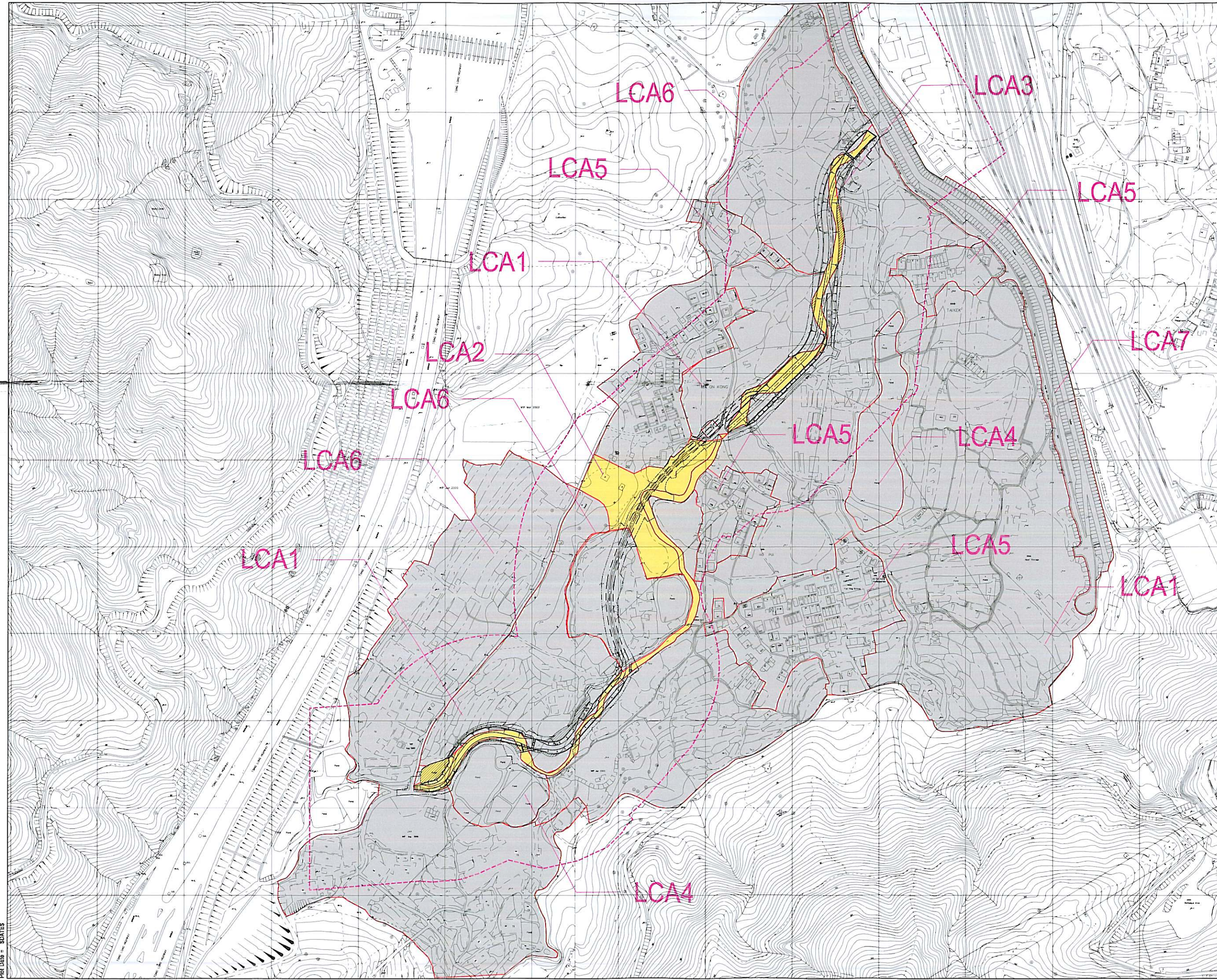
Contract title
YUEN LONG, KAM TIN, NGAU TAM MEI & TIN SHUI WAI
DRAINAGE IMPROVEMENT, STAGE 1
PHASE 2B - KAM TIN

Drawing title
MA ON KONG CHANNEL KT13
RESIDUE IMPACT ON
LANDSCAPE CHARACTER -
OPERATION PHASE (DAY 1)

Drawing no. LCI-002	Scale 1:2000 A1 1:4000 A3
------------------------	---------------------------------

香港特別行政區政府渠務署
THE GOVERNMENT OF THE HONG KONG
SPECIAL ADMINISTRATIVE REGION
DRAINAGE SERVICES DEPARTMENT

BLACK & VEATCH HONG KONG LIMITED
博威工程顧問有限公司



Plot Date = 08/05