

- NOTES :
1. ALL DIMENSIONS ARE IN MILLIMETRES UNLESS STATED OTHERWISE.
 2. GRID LINES ARE HONG KONG METRIC GRID 1980.
 3. TYPE 2 RAILING WITH DEBRIS TRAP BAR AND GENERAL MESH FILL SHALL BE PROVIDED AT BOTH SIDES OF THE CHANNEL BANKS

LEGEND :

- SITE BOUNDARY
- STUDY BOUNDARY
- PROPOSED CHANNEL
- PROPOSED SLOPE
- LCA1 - AGRICULTURAL LANDSCAPE CHARACTER AREA
- LCA2 - WOODLAND LANDSCAPE CHARACTER AREA
- LCA3 - RIVER / STREAM LANDSCAPE CHARACTER AREA
- LCA4 - FISH POND LANDSCAPE CHARACTER AREA
- LCA5 - VILLAGE LANDSCAPE CHARACTER AREA
- LCA6 - INDUSTRIAL LANDSCAPE CHARACTER AREA
- LCA7 - NULLAH LANDSCAPE CHARACTER AREA
- PHOTO TAKING POINT WITH PHOTO NO.

Revision	Date	Description			Initial
		Designed	Checked	Drawn	
Initial	8/05	BW	JT	SC	JT
Date	8/05	8/05	8/05	8/05	8/05
Approved					

Contract no. CE 67/98

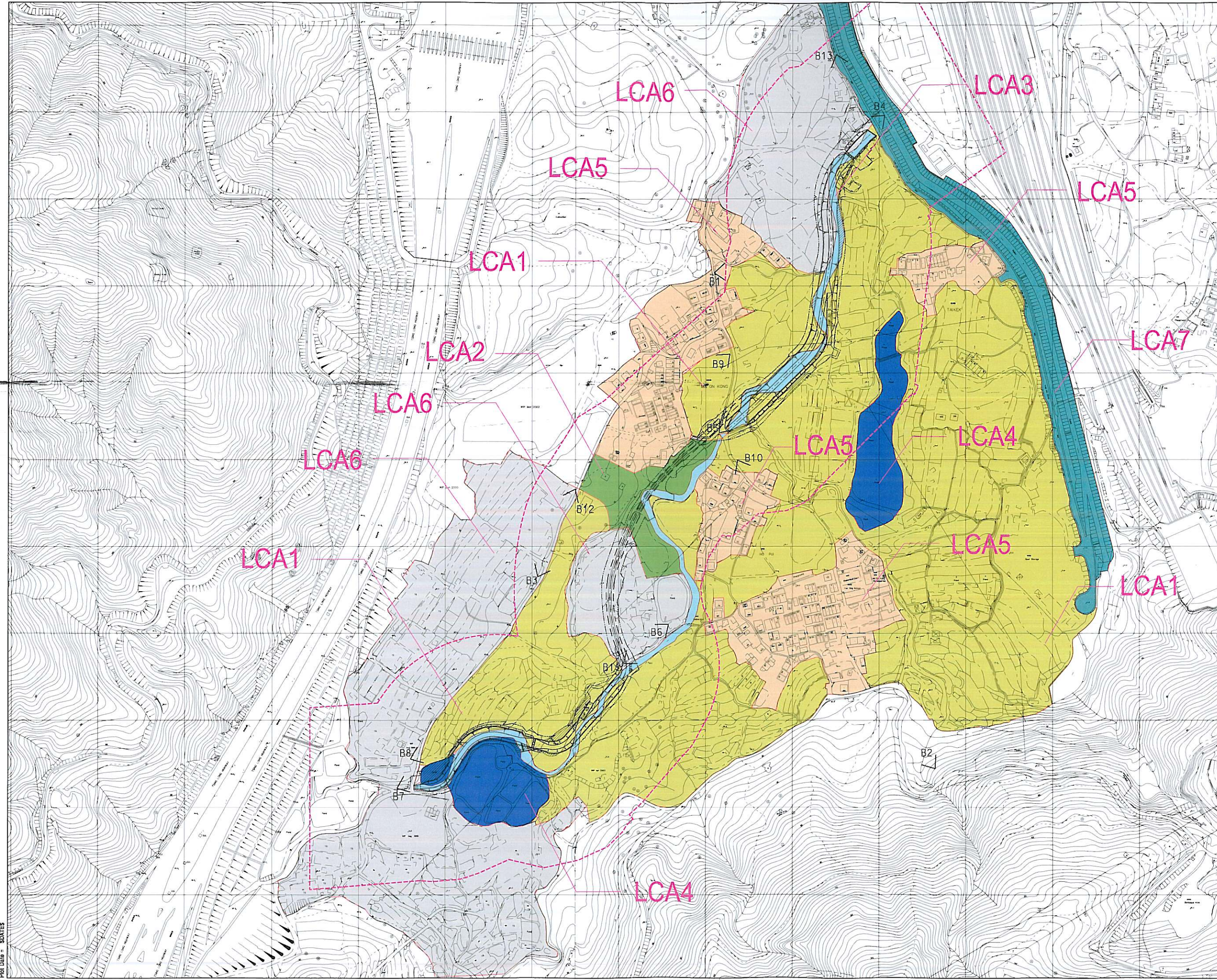
Contract title
YUEN LONG, KAM TIN, NGAU TAM MEI & TIN SHUI WAI DRAINAGE IMPROVEMENT, STAGE 1 PHASE 2B - KAM TIN

Drawing title
MA ON KONG CHANNEL KT13 LANDSCAPE CHARACTER BASELINE

Drawing no. LC-001	Scale 1:2000 A1 1:4000 A3
-----------------------	---------------------------------

香港特別行政區政府渠務署
THE GOVERNMENT OF THE HONG KONG SPECIAL ADMINISTRATIVE REGION
DRAINAGE SERVICES DEPARTMENT

BLACK & VEATCH HONG KONG LIMITED
博威工程顧問有限公司



Plot Date = 8/05/05