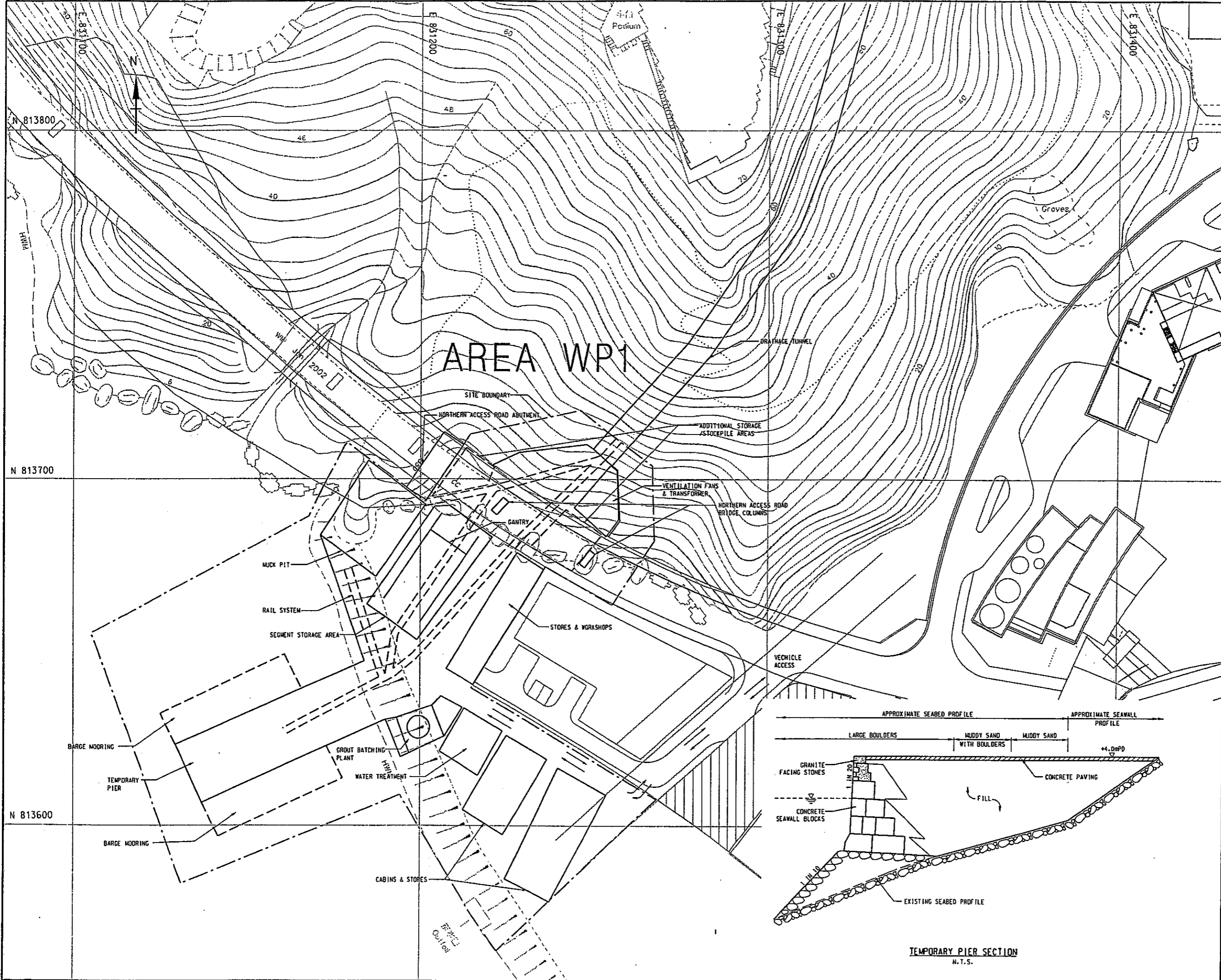


- NOTES :
1. SPILL REMOVAL MAY BE CARRIED OUT USING A CONVEYOR SYSTEM.
 2. TEMPORARY WORKS LAYOUT IS FOR PRELIMINARY PLANNING ONLY.

- LEGEND :
- LAND STATUS AND LOT NUMBER
 - TEMPORARY WORKS AREA
 - PERMANENTATION OF FOR SHAFT CHAMBER
 - PERMANENT ALIENATION OF LAND FOR SHAFT VEHICULAR ACCESS ROAD
 - REPRESENTATIVE NOISE SENSITIVE RECEIVERS
 - DIRECTION OF SIGHTLINE FROM FACADE
 - POTENTIAL NOTIONAL NOISE SOURCE ON SITE
 - REPRESENTATIVE NOISE SENSITIVE RECEIVER
 - EXPECTED NOISE PROPAGATION PATHWAY



Revision	Date	Description			Initial
	Designed	Checked	Drawn	Checked	
Initial	TY	DCA	SZ	STL	
Date	01/04	01/04	01/04	01/04	01/04

Agreement no. CE 25/2002 (DS)

Contract title
DRAINAGE IMPROVEMENT IN NORTHERN HONG KONG ISLAND - HONG KONG WEST DRAINAGE TUNNEL AND LOWER CATCHMENT IMPROVEMENT - INVESTIGATION

Drawing title
PROPOSED WORKS AND TEMPORARY WORKS AREA WESTERN OUTLET PORTAL

Drawing no. **FIGURE 2.15** Scale 1:1000 (A3)

香港特別行政區政府渠務署
THE GOVERNMENT OF THE HONG KONG SPECIAL ADMINISTRATIVE REGION
DRAINAGE SERVICES DEPARTMENT

BLACK & VEATCH HONG KONG LIMITED
博威工程顧問有限公司

Plot Date : 20 APR 2005