

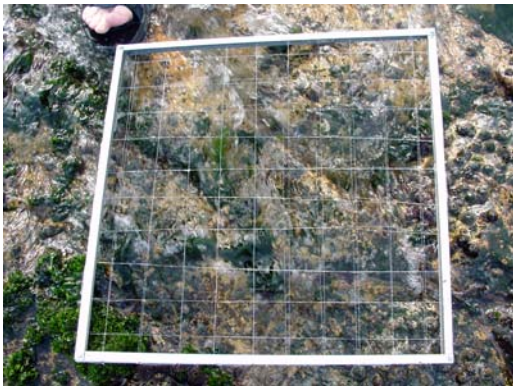
The Intertidal Zone of Tai Lei Island



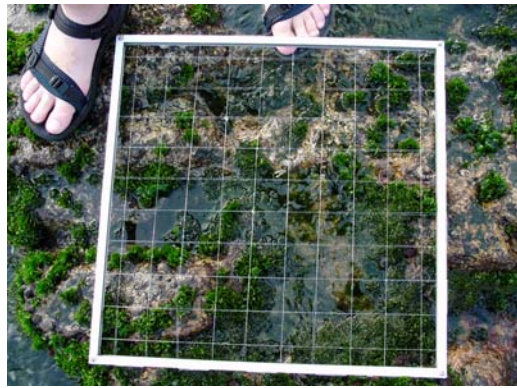
Quadrat 1



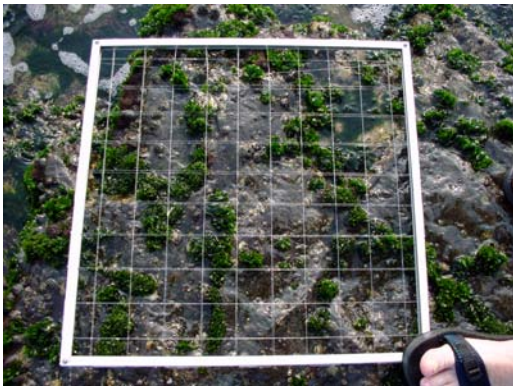
Quadrat 4



Quadrat 2



Quadrat 5



Quadrat 3

Sub-tidal Marine Habitats



Photo of the top of a boulder showing the encrusting organisms



General sub-tidal area around the Northern Peng Chau Pier



Goniopora columna



Favia rotumana



Cypraea Arabica



Perna veridis



Golf Ball Sponge



Schizoporella errata