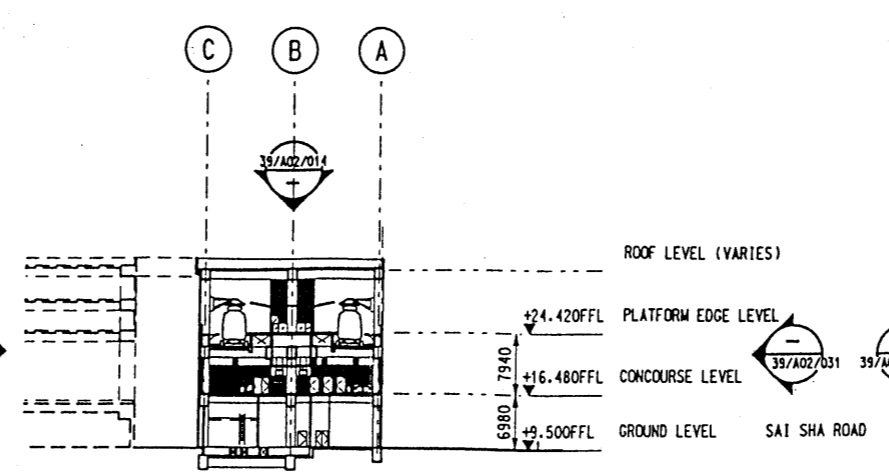
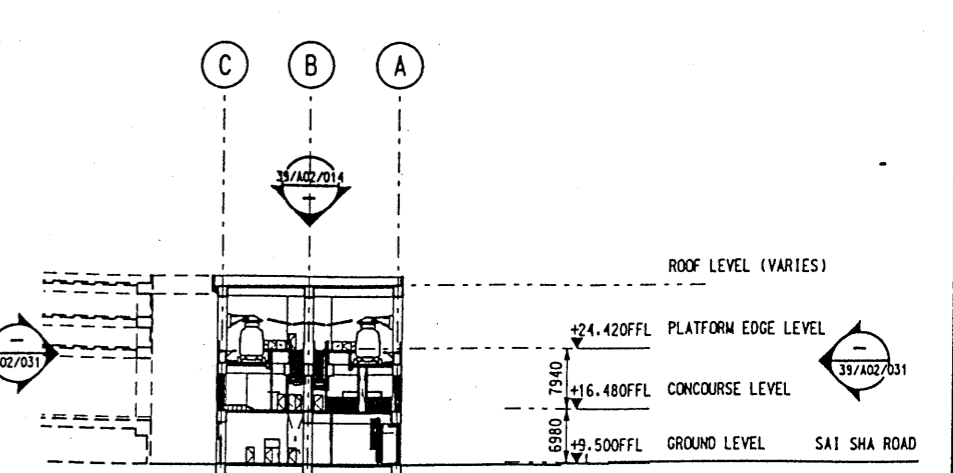


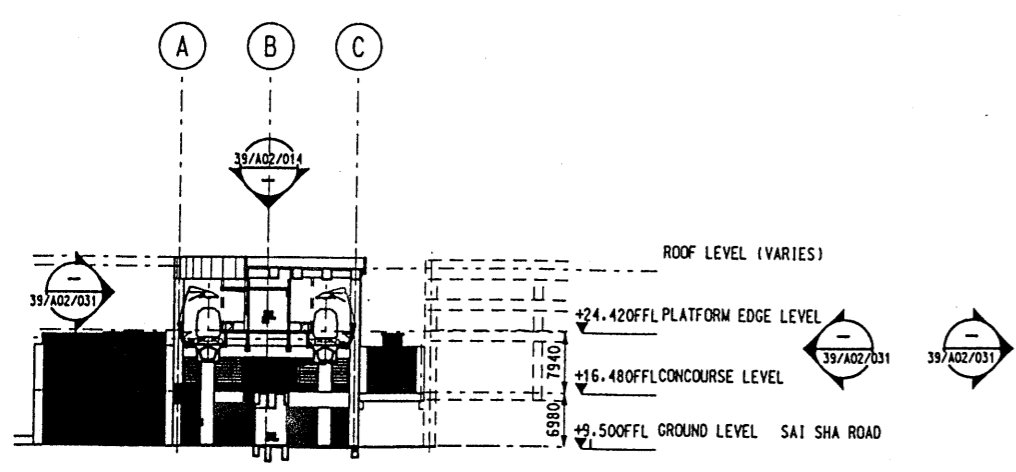
SECTION B  
SCALE 39/A02/011



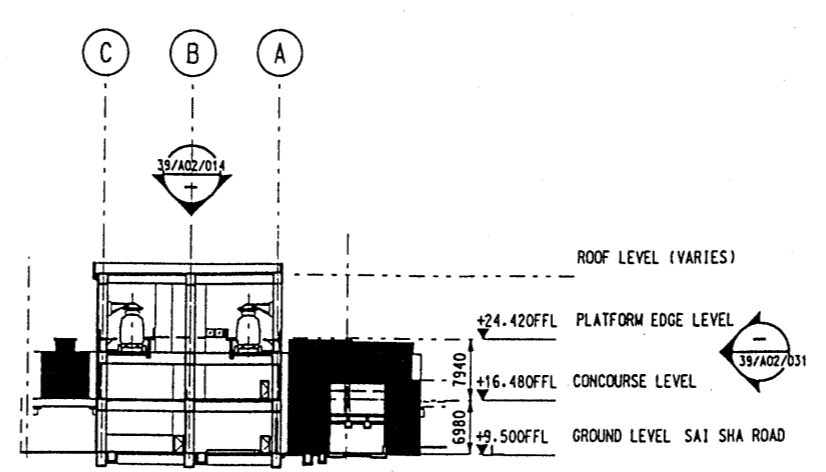
SECTION C  
SCALE 39/A02/011



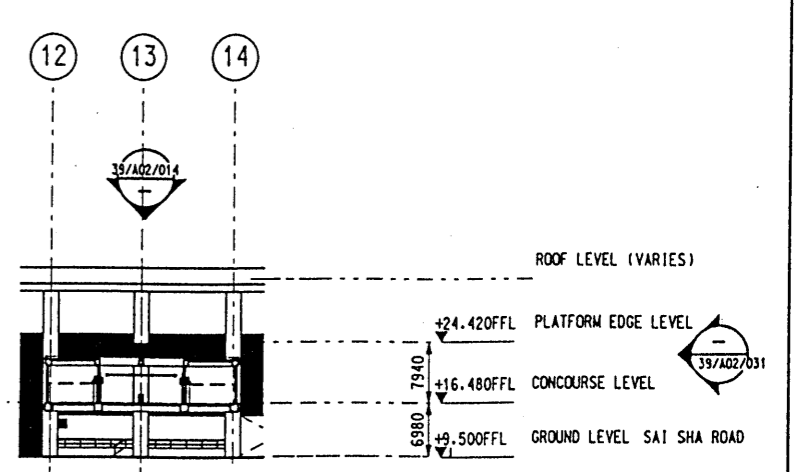
SECTION D  
SCALE 39/A02/011



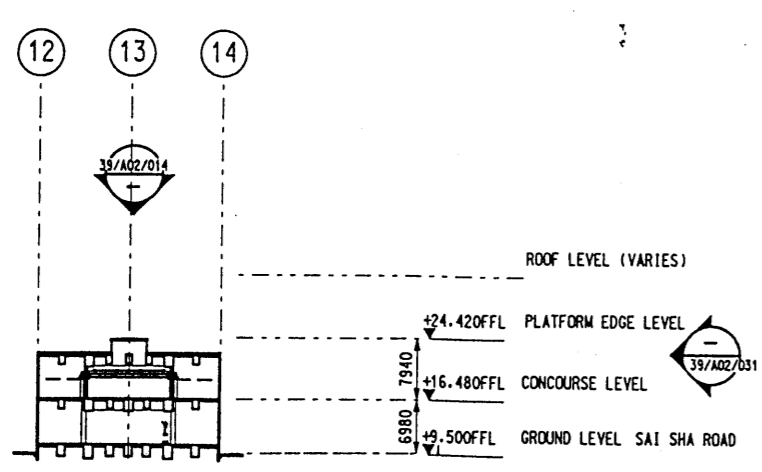
SECTION E  
SCALE 39/A02/011



SECTION F  
SCALE 39/A02/011

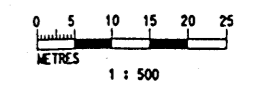


SECTION G  
SCALE 39/A02/011



SECTION H  
SCALE 39/A02/011

N.B. Figures supplied by KCRC (ref. ERE/MOS/TCC300/IP611 (E1-211256)) dated 25 September 2001



REV	DATE	BY	SUB	APP	DESCRIPTION

DESIGNED BY P. MORLEY
DRAWN BY NB
CHECKED BY P. MORLEY
IN CHARGE J. BAKER
DATE 21 NOV 2000

**KCR** East Rail Extensions  
九廣鐵路 東鐵支線

**Maunsell Consultants Asia Ltd.**  
茂盛(亞洲)工程顧問有限公司

In association with  
P&M, Dennis Lau & Ng Chun Man, Parsons Brinckerhoff (Asia),  
Birnie Black & Veatch, URS, P&S, Tetra Tech, HOK, D & W

TCC300 SHEK MUN TO LEE ON  
LEE ON STATION

Figure 3.7.1f  
Cross Section B-B, C-C,  
D-D, E-E, F-F, G-G, H-H

CADD FILENAME 39A02022.DGN	CADD DATE 10 FEB 2000
SCALE 1 : 1000 A3 1 : 500 A1	
DRAWING NUMBER TCC300 / 39 / A02 / 022	
CONTRACT NO TCC300	STAGE CODE / REV W / 1