

Annex D

Predictions of Operational Noise

Table D1 - Details of NSRs at North Lantau for Operational Noise Assessment

Section:	North Lantau	No. of NSRs represented	No. of Dwellings represented	Buffer Distance	mPD (z)	No of NSRs represented by each AP			Assessment Floor			Height (H)			
						Low-Level	Mid-Level	High-Level	Low-level	Mid-level	Top-level	Low-level	Mid-level	Top-level	
NL-N1A	Scattered Village House at Tso Wan	1	1	30	28	1	N/A	N/A	0	N/A	N/A	1.5	N/A	N/A	N/A
NL-N1B	Scattered Village House at Tso Wan	0	0	30	28	0	N/A	N/A	0	N/A	N/A	1.5	N/A	N/A	N/A
NL-N1C	Scattered Village House at Tso Wan	1	1	30	28	1	N/A	N/A	0	N/A	N/A	1.5	N/A	N/A	N/A
NL-N1D	Scattered Village House at Tso Wan	0	0	35	28	0	N/A	N/A	0	N/A	N/A	1.5	N/A	N/A	N/A
NL-N2A	Scattered Village House at Tso Wan	1	1	115	30	1	N/A	N/A	0	N/A	N/A	1.5	N/A	N/A	N/A
NL-N2B	Scattered Village House at Tso Wan	2	2	115	28	2	N/A	N/A	0	N/A	N/A	1.5	N/A	N/A	N/A
NL-N2C	Scattered Village House at Tso Wan	2	2	110	28	2	N/A	N/A	0	N/A	N/A	1.5	N/A	N/A	N/A
NL-N3A	Scattered Village House at Tso Wan	0	0	80	28	0	N/A	N/A	0	N/A	N/A	1.5	N/A	N/A	N/A
NL-N3B	Scattered Village House at Tso Wan	1	1	80	28	1	N/A	N/A	0	N/A	N/A	1.5	N/A	N/A	N/A
NL-N3C	Scattered Village House at Tso Wan	0	0	75	20	0	N/A	N/A	0	N/A	N/A	1.5	N/A	N/A	N/A
NL-N3D	Scattered Village House at Tso Wan	1	1	80	20	1	N/A	N/A	0	N/A	N/A	1.5	N/A	N/A	N/A
NL-N3E	Scattered Village House at Tso Wan	0	0	75	8	0	N/A	N/A	0	N/A	N/A	1.5	N/A	N/A	N/A
NL-N3F	Scattered Village House at Tso Wan	1	1	65	8	1	N/A	N/A	0	N/A	N/A	1.5	N/A	N/A	N/A
NL-N3G	Scattered Village House at Tso Wan	3	3	80	10	3	N/A	N/A	0	N/A	N/A	1.5	N/A	N/A	N/A
NL-N3H	Scattered Village House at Tso Wan	1	1	75	6	1	N/A	N/A	0	N/A	N/A	1.5	N/A	N/A	N/A
NL-N3I	Scattered Village House at Tso Wan	0	0	85	6	0	N/A	N/A	0	N/A	N/A	1.5	N/A	N/A	N/A
NL-N4A	Scattered Village House at Tso Wan	2	2	190	8	2	N/A	N/A	0	N/A	N/A	1.5	N/A	N/A	N/A
NL-N4B	Scattered Village House at Tso Wan	1	1	185	8	1	N/A	N/A	0	N/A	N/A	1.5	N/A	N/A	N/A
NL-N5A	Scattered Village House at Tso Wan	2	2	180	7	2	N/A	N/A	0	N/A	N/A	1.5	N/A	N/A	N/A
NL-N5B	Scattered Village House at Tso Wan	1	1	170	12	1	N/A	N/A	0	N/A	N/A	1.5	N/A	N/A	N/A
NL-N6A	Scattered Village House at Tso Wan	2	2	155	14	2	N/A	N/A	0	N/A	N/A	1.5	N/A	N/A	N/A
NL-N6B	Scattered Village House at Tso Wan	2	2	140	15	2	N/A	N/A	0	N/A	N/A	1.5	N/A	N/A	N/A
NL-N7A	Scattered Village House at Fa Ping	1	1	60	5	1	N/A	N/A	0	N/A	N/A	1.5	N/A	N/A	N/A
NL-N7B	Scattered Village House at Fa Ping	0	0	60	5	0	N/A	N/A	0	N/A	N/A	1.5	N/A	N/A	N/A
NL-N7C	Scattered Village House at Fa Ping	0	0	45	11	0	N/A	N/A	0	N/A	N/A	1.5	N/A	N/A	N/A
NL-N7D	Scattered Village House at Fa Ping	1	1	40	11	1	N/A	N/A	0	N/A	N/A	1.5	N/A	N/A	N/A
NL-N7E	Scattered Village House at Fa Ping	0	0	45	11	0	N/A	N/A	0	N/A	N/A	1.5	N/A	N/A	N/A
NL-N7F	Scattered Village House at Fa Ping	1	1	45	15	1	N/A	N/A	0	N/A	N/A	1.5	N/A	N/A	N/A
NL-N8A	Scattered Village House at Fa Ping	1	1	100	5	1	N/A	N/A	0	N/A	N/A	1.5	N/A	N/A	N/A
NL-N8B	Scattered Village House at Fa Ping	1	1	80	15	1	N/A	N/A	0	N/A	N/A	1.5	N/A	N/A	N/A
NL-N8C	Scattered Village House at Fa Ping	0	0	100	15	0	N/A	N/A	0	N/A	N/A	1.5	N/A	N/A	N/A
NL-N8D	Scattered Village House at Fa Ping	1	1	110	11	1	N/A	N/A	0	N/A	N/A	1.5	N/A	N/A	N/A
NL-N9A	Scattered Village House at Fa Ping	1	1	100	10	1	N/A	N/A	0	N/A	N/A	1.5	N/A	N/A	N/A
NL-N9B	Scattered Village House at Fa Ping	0	0	100	10	0	N/A	N/A	0	N/A	N/A	1.5	N/A	N/A	N/A
Total no. of dwellings						31	31								

Table D2 - Details of NSRs at Tsing Lung Tau for Operational Noise Assessment

Section:	TSING LUNG TAU	No. of NSRs represented	Total No. of dwellings represented	Buffer Distance	mPD (z)	No of NSRs represented by each AP			Assessment Floor			Height (H)					
						Low-Level	Mid-Level	High-Level	Low-level	Mid-level	Top-level	Low-level	Mid-level	Top-level			
NSR ID	LOCATIONS																
TLT-N1A	Hong Kong Garden	2	44	240	31.3	14	15	15	1	10	20	4.9	30.1	58.1			
TLT-N1B	Hong Kong Garden	2	44	270	31.3	14	15	15	1	10	20	4.9	30.1	58.1			
TLT-N1C	Hong Kong Garden	2	44	295	31.3	14	15	15	1	10	20	4.9	30.1	58.1			
TLT-N1D	Hong Kong Garden	2	44	325	31.3	14	15	15	1	10	20	4.9	30.1	58.1			
TLT-N1E	Hong Kong Garden	2	44	330	23.2	14	15	15	1	10	20	4.9	30.1	58.1			
TLT-N1F	Hong Kong Garden	2	44	340	23.2	14	15	15	1	10	20	4.9	30.1	58.1			
TLT-N1G	Hong Kong Garden	2	44	370	23.2	14	15	15	1	10	20	4.9	30.1	58.1			
TLT-N1H	Hong Kong Garden	1	29	265	38.8	9	10	10	1	10	20	4.9	30.1	58.1			
TLT-N1I	Hong Kong Garden	1	29	265	38.8	9	10	10	1	10	20	4.9	30.1	58.1			
TLT-N1J	Hong Kong Garden	2	58	275	38.8	19	20	19	1	10	20	4.9	30.1	58.1			
TLT-N1K	Hong Kong Garden	2	58	355	38.8	19	20	19	1	10	20	4.9	30.1	58.1			
TLT-N2A	Grand Bay Villa	6	12	25	11.7	6	0	6	0	N/A	1	1.75	N/A	4.9			
TLT-N2B	Grand Bay Villa	5	10	60	11.7	5	0	5	0	N/A	1	1.75	N/A	4.9			
TLT-N2C	Grand Bay Villa	0	0	20	11.7	0	0	0	0	N/A	1	1.75	N/A	4.9			
TLT-N2D	Grand Bay Villa	0	0	60	11.7	0	0	0	0	N/A	1	1.75	N/A	4.9			
TLT-N4A	Scattered Village House	3	9	235	90	3	3	3	0	1	2	1.75	4.9	7.7			
TLT-N4B	Scattered Village House	0	0	245	90	0	0	0	0	1	2	1.75	4.9	7.7			
TLT-N5A	Bayside Villa	3	9	315	23.9	3	3	3	0	1	2	1.75	4.9	7.7			
TLT-N5B	Bayside Villa	5	15	290	23.9	5	5	5	0	1	2	1.75	4.9	7.7			
Total no. of dwellings			537			176	176	185	537								

Table D3 - Details of NSRs at Tai Lam Chung for Operational Noise Assessment

Section:	NSR ID	Tai Lam Chung LOCATIONS	No. of NSRs represented	Total No. of dwellings represented	Buffer Distance	mPD (z)	No of NSRs represented by each AP			Assessment Floor			Height (H)		
							Low-Level	Mid-Level	High-Level	Low-level	Mid-level	Top-level	Low-level	Mid-level	Top-level
	TLC-N1A	Correctional Institution (Staff Quarters)	11	44	140	4.9	14	15	15	1	3	4	5.8	12.2	15.4
	TLC-N1B	Correctional Institution (Staff Quarters)	1	4	145	4.9	1	2	1	1	3	4	5.8	12.2	15.4
	TLC-N2A	Correctional Institution (Clinic)	0	0	75	4.9	0	0	0	1	3	4	5	11	14
	TLC-N2B	Correctional Institution (Clinic)	0	0	75		0	0	0	0	1	2	1.5	4.5	7.5
	TLC-N3	Tai Lam Chung Tsuen	13	39	110	3.6	13	13	13	0	1	2	1.5	4.5	7.5
	TLC-N4A	Scattered village houses - west of Tai Lam Chung Road	1	3	175	6	1	1	1	0	1	2	1.5	4.5	7.5
	TLC-N4B	Scattered village houses - west of Tai Lam Chung Road	1	3	175	6	1	1	1	0	1	2	1.5	4.5	7.5
	TLC-P1	Tai Lam Chung CDA Site	1	9	360	6	3	3	3	1	5	9	3.4	16	28.6
	TLC-P2	Tai Lam Chung CDA Site	1	9	370	6	3	3	3	1	5	9	3.4	16	28.6
	TLC-P3	Tai Lam Chung CDA Site	1	9	450	6	3	3	3	1	5	9	3.4	16	28.6
	TLC-P4	Tai Lam Chung CDA Site	2	16	120	15	5	6	5	1	5	8	6.5	13.4	27.3
	TLC-P5	Tai Lam Chung CDA Site	2	22	420	15	7	8	7	1	5	11	6.5	13.4	36.2
	TLC-P6	Tai Lam Chung CDA Site	2	26	410	15	8	9	9	1	8	13	6.5	27.3	42.1
	TLC-P7	Tai Lam Chung CDA Site	2	30	395	15	10	10	10	1	8	15	6.5	27.3	48.1
	Total no. of dwellings			214											

Table D4 - Details of NSRs at Siu Lam for Operational Noise Assessment

C1777 - Route 13

Section: Siu Lam						No of NSRs represented by each AP			Assessment Floor			Height (M)		
NSR ID	LOCATIONS	No. of NSRs represented	Total No. of dwellings represented	Buffer Distance	mPD (z)	Low-Level	Mid-Level	High-Level	Low-level	Mid-level	Top-level	Low-level	Mid-level	Top-level
SL-N1A	Siu Lam Psychiatric Centre	0	0	109	45.2	0	0	0	1	3	4	5	11	14
SL-N1B	Siu Lam Psychiatric Centre	0	0	185	45.2	0	0	0	1	3	4	5	11	14
SL-N2A	Siu Lam Hospital (Library Block) ⁽¹⁾	1	0	90	60	1	0	0	0	N/A	N/A	1.5	N/A	N/A
SL-N2B	Siu Lam Hospital (Library Block) ⁽¹⁾	0	0	61	60	0	0	0	0	N/A	N/A	1.5	N/A	N/A
SL-N2C	Siu Lam Hospital (Staff quarter)	3	9	60	60	3	3	3	0	1	2	1.5	4.5	7.5
SL-N2E	Siu Lam Hospital (Staff quarter)	2	2	120	64	2	0	0	0	N/A	N/A	1.5	N/A	N/A
SL-N2F	Siu Lam Hospital ⁽¹⁾	1	0	150	78	0	0	0	0	1	2	1.5	5	8
SL-N2G	Siu Lam Hospital ⁽¹⁾	1	0	150	78	0	0	0	0	1	2	1.5	5	8
SL-N3A	Correctional Institution staff quarter (South of the Siu Lam Interchange)	1	5	50	34.8	1	2	2	0	2	4	1.5	7.5	13.5
SL-N3B	Correctional Institution staff quarter (South of the Siu Lam Interchange)	0	0	40	34.8	0	0	0	0	2	4	1.5	7.5	13.5
SL-N3C	Correctional Institution staff quarter (South of the Siu Lam Interchange)	1	5	35	34.8	1	2	2	0	2	4	1.5	7.5	13.5
SL-N3D	Correctional Institution staff quarter (South of the Siu Lam Interchange)	1	5	40	34.8	1	2	2	0	2	4	1.5	7.5	13.5
SL-N3E	Correctional Institution staff quarter (South of the Siu Lam Interchange)	0	0	35	34.8	0	0	0	0	2	4	1.5	7.5	13.5
SL-N3F	Correctional Institution staff quarter (South of the Siu Lam Interchange)	1	5	30	34.8	1	2	2	0	2	4	1.5	7.5	13.5
SL-N3G	Correctional Institution staff quarter (South of the Siu Lam Interchange)	1	5	35	34.8	1	2	2	0	2	4	1.5	7.5	13.5
SL-N3H	Correctional Institution staff quarter (South of the Siu Lam Interchange)	0	0	40	34.8	0	0	0	0	2	4	1.5	7.5	13.5
SL-N3I	Correctional Institution staff quarter (South of the Siu Lam Interchange)	1	5	55	34.8	1	2	2	0	2	4	1.5	7.5	13.5
SL-N4A	Correctional Institution staff quarter (South of the Siu Lam Interchange)	1	5	145	32.8	1	2	2	0	2	4	1.5	7.5	13.5
SL-N4B	Correctional Institution staff quarter (South of the Siu Lam Interchange)	1	5	140	32.8	1	2	2	0	2	4	1.5	7.5	13.5
SL-N4C	Correctional Institution staff quarter (South of the Siu Lam Interchange)	1	5	160	32.8	1	2	2	0	2	4	1.5	7.5	13.5
SL-N4D	Correctional Institution staff quarter (South of the Siu Lam Interchange)	1	4	180	27	1	2	1	1	2	4	4.5	7.5	13.5
SL-N4E	Correctional Institution staff quarter (South of the Siu Lam Interchange)	1	4	180	27	1	2	1	1	2	4	4.5	7.5	13.5
SL-N4F	Correctional Institution staff quarter (South of the Siu Lam Interchange)	1	4	160	27	1	2	1	1	2	4	4.5	7.5	13.5
SL-N4G	Correctional Institution staff quarter (South of the Siu Lam Interchange)	0	0	155	27	0	0	0	1	2	4	4.5	7.5	13.5

Table D4 - Details of NSRs at Siu Lam for Operational Noise Assessment

Section:	Siu Lam	No. of NSRs represented	Total No. of dwellings represented	Buffer Distance	mPD (z)	No of NSRs represented by each AP			Assessment Floor			Height (H)			
						Low-Level	Mid-Level	High-Level	Low-level	Mid-level	Top-level	Low-level	Mid-level	Top-level	
NSR ID	LOCATIONS														
SL-N4H	Correctional Institution staff quarter (South of the Siu Lam Interchange)	1	4	155	27	1	2	1	1	2	4	4.5	7.5	13.5	
SL-N4I	Correctional Institution staff quarter (South of the Siu Lam Interchange)	0	0	175	27	0	0	0	1	2	4	4.5	7.5	13.5	
SL-N5A	Police Quarters	0	0	65	5	0	0	0	1	4	9	4.5	13.5	28.5	
SL-N5B	Police Quarters	2	18	40	5	6	6	6	1	4	9	4.5	13.5	28.5	
SL-N5C	Police Quarters	2	18	45	5	6	6	6	1	4	9	4.5	13.5	28.5	
SL-N5D	Police Quarters	0	0	50	5	0	0	0	1	4	9	4.5	13.5	28.5	
SL-N6A	Correctional Institution staff quarter (North of the Siu Lam Interchange)	3	9	100	22	3	3	3	0	1	2	1.5	5	8	
SL-N6B	Correctional Institution staff quarter (North of the Siu Lam Interchange)	1	3	90	22	1	1	1	0	1	2	1.5	5	8	
SL-N6C	Correctional Institution staff quarter (North of the Siu Lam Interchange)	3	9	95	22	3	3	3	0	1	2	1.5	5	8	
SL-N7A	Kings Park Villa	1	1	230	10	0	1	0	0	1	2	1.5	5	8	
SL-N7B	Kings Park Villa	1	1	225	10	0	1	0	0	1	2	1.5	5	8	
SL-N7C	Kings Park Villa	2	2	240	10	0	1	1	0	1	2	1.5	5	8	
SL-N7D	Kings Park Villa	1	1	245	10	0	1	0	0	1	2	1.5	5	8	
SL-N7E	Kings Park Villa	0	0	245	10	0	0	0	0	1	2	1.5	5	8	
SL-N7F	Kings Park Villa	2	2	260	10	0	1	1	0	1	2	1.5	5	8	
SL-N7G	Kings Park Villa	1	1	270	10	0	1	0	0	1	2	1.5	5	8	
SL-N7H	Kings Park Villa	2	2	285	10	0	1	1	0	1	2	1.5	5	8	
SL-N8A	The Castle Bay	1	1	240	12	0	1	0	0	1	2	1.5	5	8	
SL-N8B	The Castle Bay	5	5	270	12	1	2	2	0	1	2	1.5	5	8	
SL-N8C	The Castle Bay	1	1	245	12	0	1	0	0	1	2	1.5	5	8	
SL-N8D	The Castle Bay	1	1	280	12	0	1	0	0	1	2	1.5	5	8	
SL-N9A	Castle Peak Villa	1	6	430	10	2	2	2	0	2	5	1.5	7.5	16.5	
SL-N9B	Castle Peak Villa	1	6	430	10	2	2	2	0	2	5	1.5	7.5	16.5	
SL-N10A	Scattered house in Siu Lam Tsuen	1	3	140	46.4	1	1	1	0	1	2	1.5	4.5	7.5	
SL-N10B	Scattered house in Siu Lam Tsuen	0	0	145	46.4	0	0	0	0	1	2	1.5	4.5	7.5	
SL-N10C	Scattered house in Siu Lam Tsuen	0	0	150	46.4	0	0	0	0	1	2	1.5	4.5	7.5	
SL-N11A	Scattered house in Siu Lam Tsuen	2	6	25	22	2	2	2	0	1	2	1.5	4.5	7.5	
SL-N11B	Scattered house in Siu Lam Tsuen	0	0	30	22	0	0	0	0	1	2	1.5	4.5	7.5	
SL-N11C	Scattered house in Siu Lam Tsuen	0	0	35	22	0	0	0	0	1	2	1.5	4.5	7.5	
SL-N12A	Scattered house in Siu Lam Tsuen	4	12	50	14	4	4	4	0	1	2	1.5	4.5	7.5	
SL-N12B	Scattered house in Siu Lam Tsuen	0	0	55	14	0	0	0	0	1	2	1.5	4.5	7.5	
SL-N12C	Scattered house in Siu Lam Tsuen	0	0	55	14	0	0	0	0	1	2	1.5	4.5	7.5	
SL-N13A	Scattered house in Siu Lam Tsuen	4	12	60	22	4	4	4	0	1	2	1.5	4.5	7.5	
SL-N13B	Scattered house in Siu Lam Tsuen	0	0	60	22	0	0	0	0	1	2	1.5	4.5	7.5	
SL-N15	Correctional Institution Staff Quarters	4	16	200	95	5	6	5	0	2	3	1.5	7.5	10.5	
SL-N16	Correctional Institution Staff Quarters	2	8	180	70	2	3	3	0	2	3	1.5	7.5	10.5	
SL-N17	Scattered house to the north of CI staff quarters	2	4	100	50	2	0	2	0	N/A	1	1.5	N/A	4.5	
SL-N18A	Church at Siu Lam	1	0	155	30	1	0	0	0	N/A	N/A	1.5	N/A	N/A	
SL-N18B	Church at Siu Lam	0	0	150	30	0	0	0	0	N/A	N/A	1.5	N/A	N/A	
SL-N19A	Village house along Siu Lam Road	3	9	75	45	3	3	3	0	1	2	1.5	4.5	7.5	
SL-N19B	Village house along Siu Lam Road	0	0	90	45	0	0	0	0	1	2	1.5	4.5	7.5	
SL-N19C	Village house along Siu Lam Road	0	0	90	45	0	0	0	0	1	2	1.5	4.5	7.5	
SL-N20A	Village house along Siu Lam Road	3	9	25	12	3	3	3	0	1	2	1.5	4.5	7.5	
SL-N20B	Village house along Siu Lam Road	0	0	25	12	0	0	0	0	1	2	1.5	4.5	7.5	

Table D4 - Details of NSRs at Siu Lam for Operational Noise Assessment

Section: Siu Lam		No of NSRs represented by each AP							Assessment Floor			Height (H)		
NSR ID	LOCATIONS	No. of NSRs represented	Total No. of dwellings represented	Buffer Distance	mPD (z)	Low-Level	Mid-Level	High-Level	Low-level	Mid-level	Top-level	Low-level	Mid-level	Top-level
SL-N20C	Village house along Siu Lam Road	0	0	25	12	0	0	0	0	1	2	1.5	4.5	7.5
SL-N21A	Village house along Siu Lam Road	1	3	60	30	1	1	1	0	1	2	1.5	4.5	7.5
SL-N21B	Village house along Siu Lam Road	0	0	60	30	0	0	0	0	1	2	1.5	4.5	7.5
SL-N21C	Village house along Siu Lam Road	0	0	60	30	0	0	0	0	1	2	1.5	4.5	7.5
SL-N22A	Village house along Siu Lam Road	2	6	120	50	2	2	2	0	1	2	1.5	4.5	7.5
SL-N22B	Village house along Siu Lam Road	0	0	120	50	0	0	0	0	1	2	1.5	4.5	7.5
SL-N23A	Seamen's training centre	1	0	50	5	0	0	0	0	1	2	1.5	4.5	7.5
SL-N23B	Seamen's training centre	1	0	50	5	0	0	0	0	1	2	1.5	4.5	7.5
SL-P1	Poseidon Coast	1	28	150	10	9	10	9	0	13	27	1.5	38.6	77.8
SL-P2	Poseidon Coast	1	28	130	10	9	10	9	0	13	27	1.5	38.6	77.8
SL-P3	Poseidon Coast	2	56	140	10	18	19	19	0	13	27	1.5	38.6	77.8
SL-P4	Poseidon Coast	2	56	150	10	18	19	19	0	13	27	1.5	38.6	77.8
SL-P5	Poseidon Coast	2	56	180	10	18	19	19	0	13	27	1.5	38.6	77.8
SL-P6	Poseidon Coast	2	56	190	10	18	19	19	0	13	27	1.5	38.6	77.8
SL-P7	Poseidon Coast	2	56	200	10	18	19	19	0	13	27	1.5	38.6	77.8
SL-P8	Poseidon Coast	1	28	210	10	9	10	9	0	13	27	1.5	38.6	77.8
SL-P9	Poseidon Coast	2	56	220	10	18	19	19	0	13	27	1.5	38.6	77.8
SL-P10	Poseidon Coast	2	56	240	10	18	19	19	0	13	27	1.5	38.6	77.8
SL-P11	Poseidon Coast	2	56	260	10	18	19	19	0	13	27	1.5	38.6	77.8
SL-P12	Poseidon Coast	2	56	260	10	18	19	19	0	13	27	1.5	38.6	77.8
SL-P20	R(C)1 Zone to the west of Poseidon Coast	1	1	350	38	0	0	1	n/a	1	2	n/a	4.5	7.5
SL-P21	R(C)1 Zone to the west of Poseidon Coast	1	1	260	38	0	0	1	n/a	1	2	n/a	4.5	7.5
SL-P22	R(C)1 Zone to the west of Poseidon Coast	1	1	240	48	0	0	1	n/a	1	2	n/a	4.5	7.5
SL-P23	R(C)1 Zone to the west of Poseidon Coast	1	1	170	50	0	0	1	n/a	1	2	n/a	4.5	7.5
Total no. of dwellings per each level			839											

Note: (1) These NSRs rely on air-conditioning for ventilation

Table D5 - Details of NSRs at So Kwun Wat for Operational Noise Assessment

Section: So Kwun Wat		No of NSRs represented by each AP				Assessment Floor			Height (M)					
NSR ID	LOCATIONS	No. of NSRs represented	Total No. of dwellings represented	Buffer Distance	mPO (z)	Low-Level	Mid-Level	High-Level	Low-level	Mid-level	Top-level	Low-level	Mid-level	Top-level
SKW-N1	Scattered village house in So Kwun Wat	1	3	100	30	1	1	1	0	1	2	1.5	4.5	7.5
SKW-N3	Scattered house to the north-east of Area 55	1	1	40	25	1	0	0	0	N/A	N/A	1.5	N/A	N/A
SKW-N4	Scattered house to the north-east of Area 55	1	1	40	25	1	0	0	0	N/A	N/A	1.5	N/A	N/A
SKW-N5	Scattered house to the north-east of Area 55	1	1	40	25	1	0	0	0	N/A	N/A	1.5	N/A	N/A
SKW-N6	Scattered house to the north-east of Area 55	0	0	55	20	0	0	0	0	1	2	1.5	4.5	7.5
SKW-N7	Scattered house to the north-east of Area 55	1	3	55	20	1	1	1	0	1	2	1.5	4.5	7.5
SKW-N8	Scattered house to the north-east of Area 55	1	3	20	18	0	0	0	0	1	2	1.5	4.5	7.5
SKW-N9	Scattered village house (industrial uses?)	0	0	20	18	1	1	1	0	1	2	1.5	4.5	7.5
SKW-N9	Scattered village house (industrial uses?)	1	3	20	18	0	0	0	0	1	2	1.5	4.5	7.5
SKW-N10	Scattered village house in Area 55	0	0	20	20	1	1	1	0	1	2	1.5	4.5	7.5
SKW-N11	Scattered village house in Area 55	1	3	20	20	1	1	1	0	1	2	1.5	4.5	7.5
SKW-N12	Scattered village house in Area 55	0	0	25	20	0	0	0	0	1	2	1.5	4.5	7.5
SKW-N13	Scattered house to the south of Area 55 (Tuen Mun Road/So Kwun Wat Road Junction)	1	3	40	6	1	1	1	0	1	2	1.5	4.5	7.5
SKW-N14	Scattered house to the south of Area 55 (Tuen Mun Road/So Kwun Wat Road Junction)	0	0	40	6	0	0	0	0	1	2	1.5	4.5	7.5
SKW-N15	Scattered house to the south of Area 55 (Tuen Mun Road/So Kwun Wat Road Junction)	0	0	50	6	0	0	0	0	1	2	1.5	4.5	7.5
SKW-N16	Scattered house to the south of Area 55 CDA1	1	3	25	8	1	1	1	0	1	2	1.5	4.5	7.5
SKW-N17	Scattered house in Lo Tsang Shan Tsuen	1	3	50	34	1	1	1	0	1	2	1.5	4.5	7.5
SKW-N18	Scattered house in Lo Tsang Shan Tsuen	0	0	50	34	0	0	0	0	1	2	1.5	4.5	7.5
SKW-N19	Scattered house in Lo Tsang Shan Tsuen	1	3	40	28	1	1	1	0	1	2	1.5	4.5	7.5
SKW-N20	Scattered house in Lo Tsang Shan Tsuen	0	0	40	28	0	0	0	0	1	2	1.5	4.5	7.5
SKW-N21	Scattered house in Lo Tsang Shan Tsuen	0	0	40	14	0	0	0	0	1	2	1.5	4.5	7.5
SKW-N22	Scattered house in Lo Tsang Shan Tsuen	0	0	40	14	0	0	0	0	1	2	1.5	4.5	7.5
SKW-N23	Scattered house in Lo Tsang Shan Tsuen	1	3	40	14	1	1	1	0	1	2	1.5	4.5	7.5
SKW-N24	Scattered house in Lo Tsang Shan Tsuen	0	0	40	14	0	0	0	0	1	2	1.5	4.5	7.5
SKW-N25	Scattered house in Lo Tsang Shan Tsuen	1	3	40	14	1	1	1	0	1	2	1.5	4.5	7.5
SKW-N26	Scattered house in Lo Tsang Shan Tsuen	1	3	40	14	1	1	1	0	1	2	1.5	4.5	7.5
SKW-N27	Scattered house in Lo Tsang Shan Tsuen	0	0	40	14	0	0	0	0	1	2	1.5	4.5	7.5
SKW-N28	Scattered house in Lo Tsang Shan Tsuen	1	3	40	14	1	1	1	0	1	2	1.5	4.5	7.5
SKW-N29	Scattered house in Lo Tsang Shan Tsuen	0	0	40	14	0	0	0	0	1	2	1.5	4.5	7.5
SKW-N30	So Kwun Wat Government School	0	0	245	6	0	0	0	0	1	2	1.5	4.5	7.5
SKW-N31	So Kwun Wat Government School	0	0	245	6	0	0	0	0	1	2	1.5	4.5	7.5
SKW-N32	So Kwun Wat Government School	0	0	230	6	0	0	0	0	1	2	1.5	4.5	7.5
SKW-N33	So Kwun Wat Government School	0	0	220	6	0	0	0	0	1	2	1.5	4.5	7.5
SKW-N34	Scattered house in So Kwun Wat Lee Uk Tsuen	1	3	60	10	1	1	1	0	1	2	1.5	4.5	7.5
SKW-N35	Scattered house in So Kwun Wat Lee Uk Tsuen	0	0	60	10	0	0	0	0	1	2	1.5	4.5	7.5
SKW-N36	Scattered house in So Kwun Wat Lee Uk Tsuen	0	0	70	10	0	0	0	0	1	2	1.5	4.5	7.5
SKW-N37	Scattered house in So Kwun Wat Lee Uk Tsuen	1	3	70	10	1	1	1	0	1	2	1.5	4.5	7.5
SKW-N38	Scattered house in So Kwun Wat Lee Uk Tsuen	1	3	60	7.3	1	1	1	0	1	2	1.5	4.5	7.5
SKW-N39	Scattered house in So Kwun Wat Lee Uk Tsuen	1	3	60	7.3	1	1	1	0	1	2	1.5	4.5	7.5
SKW-N40	Scattered house in So Kwun Wat Lee Uk Tsuen	0	0	60	7.3	0	0	0	0	1	2	1.5	4.5	7.5
SKW-N41	Scattered house in So Kwun Wat Lee Uk Tsuen	0	0	60	7.3	0	0	0	0	1	2	1.5	4.5	7.5
SKW-N42	Scattered house in So Kwun Wat Lee Uk Tsuen	1	3	60	7.3	1	1	1	0	1	2	1.5	4.5	7.5
SKW-N43	Scattered house in So Kwun Wat Lee Uk Tsuen	2	6	110	7.3	2	2	2	0	1	2	1.5	4.5	7.5
SKW-N44	Scattered house in So Kwun Wat Lee Uk Tsuen	5	15	120	7.3	5	5	5	0	1	2	1.5	4.5	7.5
SKW-N45	Scattered house in So Kwun Wat Lee Uk Tsuen	0	0	70	15	0	0	0	0	1	2	1.5	4.5	7.5
SKW-N46	Scattered house in So Kwun Wat Lee Uk Tsuen	1	3	70	15	1	1	1	0	1	2	1.5	4.5	7.5
SKW-N47	Scattered house in So Kwun Wat Lee Uk Tsuen	0	0	75	15	0	0	0	0	1	2	1.5	4.5	7.5
SKW-N48	Scattered house in So Kwun Wat Lee Uk Tsuen	2	6	75	12	2	2	2	0	1	2	1.5	4.5	7.5
SKW-N49	Scattered house in So Kwun Wat Lee Uk Tsuen	1	3	70	12	1	1	1	0	1	2	1.5	4.5	7.5
SKW-N50	Scattered house in So Kwun Wat Lee Uk Tsuen	1	3	90	6.7	1	1	1	0	1	2	1.5	4.5	7.5
SKW-N51	Scattered house in So Kwun Wat Lee Uk Tsuen	1	3	90	10	1	1	1	0	1	2	1.5	4.5	7.5
SKW-N52	Scattered house in So Kwun Wat Lee Uk Tsuen	1	3	150	6.7	1	1	1	0	1	2	1.5	4.5	7.5
SKW-N53	Scattered house in So Kwun Wat Lee Uk Tsuen	7	21	150	6.7	7	7	7	0	1	2	1.5	4.5	7.5
SKW-N54	Scattered house in So Kwun Wat Lee Uk Tsuen	3	9	150	6.7	3	3	3	0	1	2	1.5	4.5	7.5
SKW-N55	Scattered house in So Kwun Wat Lee Uk Tsuen	0	0	95	10	0	0	0	0	1	2	1.5	4.5	7.5
SKW-N56	Scattered house in So Kwun Wat Lee Uk Tsuen	1	3	95	10	1	1	1	0	1	2	1.5	4.5	7.5
SKW-N57	Scattered house in So Kwun Wat Lee Uk Tsuen	1	3	95	10	1	1	1	0	1	2	1.5	4.5	7.5
SKW-N58	Scattered house in So Kwun Wat Lee Uk Tsuen	1	3	60	9	1	1	1	0	1	2	1.5	4.5	7.5
SKW-N59	Scattered house in So Kwun Wat Lee Uk Tsuen	0	0	110	9	0	0	0	0	1	2	1.5	4.5	7.5
SKW-N60	Scattered house in So Kwun Wat Lee Uk Tsuen	2	6	125	8	2	2	2	0	1	2	1.5	4.5	7.5
SKW-N61	Scattered house in So Kwun Wat Lee Uk Tsuen	2	6	95	12	2	2	2	0	1	2	1.5	4.5	7.5
SKW-N62	Scattered house in So Kwun Wat Lee Uk Tsuen	1	3	95	11	1	1	1	0	1	2	1.5	4.5	7.5
SKW-N63	Scattered house in So Kwun Wat Lee Uk Tsuen	1	3	120	9	1	1	1	0	1	2	1.5	4.5	7.5
SKW-N64	Scattered house in So Kwun Wat Lee Uk Tsuen	2	6	145	8	2	2	2	0	1	2	1.5	4.5	7.5
SKW-N65	Scattered house in So Kwun Wat Lee Uk Tsuen	2	6	125	8	2	2	2	0	1	2	1.5	4.5	7.5
SKW-N66	Scattered house in So Kwun Wat Lee Uk Tsuen	1	3	125	8.5	1	1	1	0	1	2	1.5	4.5	7.5
SKW-N67	Scattered house in So Kwun Wat Lee Uk Tsuen	0	0	60	7.3	0	0	0	0	1	2	1.5	4.5	7.5
SKW-N68	Scattered house in So Kwun Wat Lee Uk Tsuen	2	6	90	7.3	2	2	2	0	1	2	1.5	4.5	7.5
SKW-N69	Scattered house in So Kwun Wat Lee Uk Tsuen	6	18	140	7.3	6	6	6	0	1	2	1.5	4.5	7.5
SKW-N70	Scattered house in So Kwun Wat Lee Uk Tsuen	3	9	115	6.7	3	3	3	0	1	2	1.5	4.5	7.5
SKW-N71	Temple in So Kwun Wat Lee Uk Tsuen	0	0	250	9.6	0	0	0	0	1	2	1.5	4.5	7.5
SKW-N72	Scattered house in So Kwun Wat Lee Uk Tsuen	4	12	275	8.8	4	4	4	0	1	2	1.5	4.5	7.5
SKW-N73	Scattered house in So Kwun Wat Lee Uk Tsuen	4	12	275	8.8	4	4	4	0	1	2	1.5	4.5	7.5
SKW-N74	Scattered house in So Kwun Wat Lee Uk Tsuen	2	6	300	8.8	2	2	2	0	1	2	1.5	4.5	7.5
SKW-N75	Scattered house in So Kwun Wat Tsang Uk Tsuen	0	0	110	10	0	0	0	0	1	2	1.5	4.5	7.5
SKW-N76	Scattered house in So Kwun Wat Tsang Uk Tsuen	1	3	110	10	1	1	1	0	1	2	1.5	4.5	7.5
SKW-N77	Scattered house in So Kwun Wat Tsang Uk Tsuen	0	0	95	10	0	0	0	0	1	2	1.5	4.5	7.5
SKW-N78	Scattered house in So Kwun Wat Tsang Uk Tsuen	1	3	95	10	1	1	1	0	1	2	1.5	4.5	7.5
SKW-N79	Scattered house in So Kwun Wat Tsang Uk Tsuen	2	6	100	10	2	2	2	0	1	2	1.5	4.5	7.5
SKW-N80	Scattered house in So Kwun Wat Tsang Uk Tsuen	2	6	100	10	2	2	2	0	1	2	1.5	4.5	7.5
SKW-N81	Scattered house in So Kwun Wat Tsang Uk Tsuen	2	6	100	10	2	2	2	0	1	2	1.5	4.5	7.5
SKW-N82	Scattered house in So Kwun Wat Tsang Uk Tsuen	4	12	95	10	4	4	4	0	1	2	1.5	4.5	7.5
SKW-N83	Scattered house in So Kwun Wat Tsang Uk Tsuen	0	0	70	10	0	0	0	0	1	2	1.5	4.5	7.5
SKW-N84	Scattered house in So Kwun Wat Tsang Uk Tsuen	1	3	60	10	1	1	1	0	1	2	1.5	4.5	7.5
SKW-N85	Scattered house in So Kwun Wat Tsang Uk Tsuen	0	0	70	10	0	0	0	0	1	2	1.5	4.5	7.5
SKW-N86	Scattered house in So Kwun Wat Tsang Uk Tsuen	1	3	125	10	1	1	1	0	1	2	1.5	4.5	7.5
SKW-N87	Scattered house in So Kwun Wat Tsang Uk Tsuen	0	0	125	10	0	0	0	0	1	2	1.5	4.5	7.5
SKW-N88	Scattered house in So Kwun Wat Tsang Uk Tsuen	0	0	160	11	0	0	0	0	1	2	1.5	4.5	7.5
SKW-N89	Scattered house in So Kwun Wat Tsang Uk Tsuen	1	3	160	11	1	1	1	0	1	2	1.5	4.5	7.5
SKW-N90	Scattered house to the west of Lo Ts													

Table D5 - Details of NSRs at So Kwun Wat for Operational Noise Assessment

Section: So Kwun Wat		No of NSRs represented by each AP							Assessment Floor			Height (H)		
NSR ID	LOCATIONS	No. of NSRs represented	Total No. of dwellings represented	Buffer Distance	mPD (z)	Low-Level	Mid-Level	High-Level	Low-level	Mid-level	Top-level	Low-level	Mid-level	Top-level
									1	22	44	5.5	68.5	134.5
SKW-P127	Area 55 R(B)	8	352	25	20	117	118	117	1	22	44	5.5	68.5	134.5
SKW-P128	Area 55 R(B)	4	176	25	20	58	59	58	1	22	44	5.5	68.5	134.5
SKW-P129	Area 55 R(B)	4	176	90	20	58	59	59	1	22	44	5.5	68.5	134.5
SKW-P130	Area 55 R(B)	4	176	110	20	58	59	59	1	22	44	5.5	68.5	134.5
SKW-P131	Area 55 R(B)	4	176	135	20	58	59	59	1	22	44	5.5	68.5	134.5
SKW-P132	Area 55 R(B)	4	176	200	20	58	59	59	1	22	44	5.5	68.5	134.5
SKW-P133	Area 55 R(B)	4	176	80	20	58	59	59	1	22	44	5.5	68.5	134.5
SKW-P138	Area 48 G/C	4	176	40	20	58	59	59	1	22	44	5.5	68.5	134.5
SKW-P139	Area 48 G/C	4	176	30	20	58	59	59	1	22	44	5.5	68.5	134.5
SKW-P140	Area 48 G/C	4	176	125	12.5	58	59	59	1	22	44	5.5	68.5	134.5
SKW-P141	Area 48 G/C	4	176	200	12.5	58	59	59	1	22	44	5.5	68.5	134.5
SKW-P142	Area 48 G/C	8	352	80	40	117	118	117	1	22	44	5.5	68.5	134.5
SKW-P143	Area 48 G/C	8	352	30	40	117	118	117	1	22	44	5.5	68.5	134.5
SKW-P144	Area 48 G/C	4	176	25	40	58	59	59	1	22	44	5.5	68.5	134.5
SKW-P145	Area 48 G/C	4	176	90	40	58	59	59	1	22	44	5.5	68.5	134.5
SKW-P146	Area 48 G/C	4	176	400	28	58	59	59	1	22	44	5.5	68.5	134.5
SKW-P147	Area 48 G/C	8	352	330	28	117	118	117	1	22	44	5.5	68.5	134.5
SKW-P148	Area 48 G/C	4	176	300	28	58	59	59	1	22	44	5.5	68.5	134.5
SKW-P149	Area 48 G/C	0	0	80	5.4	0	0	0	1	4	7	6.4	16.9	27.1
SKW-P153	Area 55 - G/C (School Site 1)	0	0	25	5.4	0	0	0	1	4	7	6.4	16.9	27.1
SKW-P154	Area 55 - G/C (School Site 1)	0	0	90	5.4	0	0	0	1	4	7	6.4	16.9	27.1
SKW-P155	Area 55 - G/C (School Site 1)	0	0	140	4.1	0	0	0	1	4	7	6.4	16.9	27.1
SKW-P156	Area 55 - G/C (School Site 2)	0	0	200	4.1	0	0	0	1	4	7	6.4	16.9	27.1
SKW-P157	Area 55 - G/C (School Site 2)	0	0	140	4.1	0	0	0	1	4	7	6.4	16.9	27.1
SKW-P158	Area 55 - G/C (School Site 2)	2	70	135	20	23	24	23	1	20	35	4.9	58.1	100
SKW-P201	Area 56 - PSPS Site	2	70	120	20	23	24	23	1	20	35	4.9	58.1	100
SKW-P202	Area 56 - PSPS Site	2	70	110	20	23	24	23	1	20	35	4.9	58.1	100
SKW-P203	Area 56 - PSPS Site	2	70	100	20	23	24	23	1	20	35	4.9	58.1	100
SKW-P204	Area 56 - PSPS Site	2	70	90	20	23	24	23	1	20	35	4.9	58.1	100
SKW-P205	Area 56 - PSPS Site	2	70	80	20	23	24	23	1	20	35	4.9	58.1	100
SKW-P206	Area 56 - PSPS Site	0	0	100	20	0	0	0	1	20	35	4.9	58.1	100
SKW-P207	Area 56 - PSPS Site	1	35	90	20	11	12	12	1	20	35	4.9	58.1	100
SKW-P208	Area 56 - PSPS Site	1	35	80	20	11	12	12	1	20	35	4.9	58.1	100
SKW-P209	Area 56 - PSPS Site	2	80	150	20	26	27	27	1	20	40	4.9	58.1	114
SKW-P212	Area 56 - PSPS Site	2	80	130	20	26	27	27	1	20	40	4.9	58.1	114
SKW-P213	Area 56 - PSPS Site	1	40	130	20	13	14	13	1	20	40	4.9	58.1	114
SKW-P214	Area 56 - PSPS Site	1	40	140	20	13	14	13	1	20	40	4.9	58.1	114
SKW-P215	Area 56 - PSPS Site	3	120	270	20	40	40	40	1	20	40	4.9	58.1	114
SKW-P301	Area 55 - CDA Site	3	87	280	6	29	29	29	1	15	29	9.5	48.7	87.1
SKW-P302	Area 55 - CDA Site	3	87	290	6	29	29	29	1	15	29	9.5	48.7	87.1
SKW-P303	Area 55 - CDA Site	3	87	290	6	29	29	29	1	15	29	9.5	48.7	87.1
SKW-P304	Area 55 - CDA Site	3	87	270	6	29	29	29	1	15	29	9.5	48.7	87.1
SKW-P305	Area 55 - CDA Site	3	87	260	6	29	29	29	1	15	29	9.5	48.7	87.1
SKW-P306	Area 55 - CDA Site	3	87	270	6	29	29	29	1	15	29	9.5	48.7	87.1
SKW-P307	Area 55 - CDA Site	3	87	280	6	29	29	29	1	15	29	9.5	48.7	87.1
Total no. of existing dwellings			6174											

Table D6 Predicted Traffic Noise Levels - L_{A10}(roadway noise), dB

NSR	Floor	Unmitigated				Mitigated				NSRs represented				Unmitigated Traffic Noise Impacts				Number of Noise Sensitive Receivers Exposed to Traffic Noise Impacts				Residual Impacts	
		Existing		New		Existing		New		Dwellings		Other		Dwellings		Other		Dwellings		Other		Dwellings	Other NSRs
		Existing	New	Existing	New	Total	Total	Dwellings	Other	Dwellings	Other	Dwellings	Other	Dwellings	Other	Dwellings	Other	Dwellings	Other				
North Lantau Section																							
NL-N1A	Low Level	0	85	85	0	67	67	0	0	0	0	0	0	0	0	0	0	0	0	0	0	0	0
	Mid level	0	86	86	0	69	69	0	0	0	0	0	0	0	0	0	0	0	0	0	0	0	0
	High Level	0	86	86	0	70	70	0	0	0	0	0	0	0	0	0	0	0	0	0	0	0	0
NL-N1B	Low Level	0	83	83	0	68	68	0	0	0	0	0	0	0	0	0	0	0	0	0	0	0	0
	Mid level	0	83	83	0	69	69	0	0	0	0	0	0	0	0	0	0	0	0	0	0	0	0
	High Level	0	83	83	0	70	70	0	0	0	0	0	0	0	0	0	0	0	0	0	0	0	0
NL-N1C	Low Level	0	82	82	0	65	65	0	0	0	0	0	0	0	0	0	0	0	0	0	0	0	0
	Mid level	0	84	84	0	66	66	0	0	0	0	0	0	0	0	0	0	0	0	0	0	0	0
	High Level	0	84	84	0	67	67	0	0	0	0	0	0	0	0	0	0	0	0	0	0	0	0
NL-N1D	Low Level	0	81	81	0	66	66	0	0	0	0	0	0	0	0	0	0	0	0	0	0	0	0
	Mid level	0	83	83	0	69	69	0	0	0	0	0	0	0	0	0	0	0	0	0	0	0	0
	High Level	0	83	83	0	70	70	0	0	0	0	0	0	0	0	0	0	0	0	0	0	0	0
NL-N2A	Low Level	0	61	61	0	55	55	0	0	0	0	0	0	0	0	0	0	0	0	0	0	0	0
	Mid level	0	63	63	0	56	56	0	0	0	0	0	0	0	0	0	0	0	0	0	0	0	0
	High Level	0	65	65	0	57	57	0	0	0	0	0	0	0	0	0	0	0	0	0	0	0	0
NL-N2B	Low Level	0	60	60	0	55	55	0	0	0	0	0	0	0	0	0	0	0	0	0	0	0	0
	Mid level	0	63	63	0	56	56	0	0	0	0	0	0	0	0	0	0	0	0	0	0	0	0
	High Level	0	65	65	0	57	57	0	0	0	0	0	0	0	0	0	0	0	0	0	0	0	0
NL-N2C	Low Level	0	66	66	0	59	59	0	0	0	0	0	0	0	0	0	0	0	0	0	0	0	0
	Mid level	0	69	69	0	61	61	0	0	0	0	0	0	0	0	0	0	0	0	0	0	0	0
	High Level	0	71	71	0	61	61	0	0	0	0	0	0	0	0	0	0	0	0	0	0	0	0
NL-N2A	Low Level	0	76	76	0	59	59	0	0	0	0	0	0	0	0	0	0	0	0	0	0	0	0
	Mid level	0	76	76	0	60	60	0	0	0	0	0	0	0	0	0	0	0	0	0	0	0	0
	High Level	0	76	76	0	60	60	0	0	0	0	0	0	0	0	0	0	0	0	0	0	0	0
NL-N3B	Low Level	0	76	76	0	62	62	0	0	0	0	0	0	0	0	0	0	0	0	0	0	0	0
	Mid level	0	77	77	0	64	64	0	0	0	0	0	0	0	0	0	0	0	0	0	0	0	0
	High Level	0	78	78	0	65	65	0	0	0	0	0	0	0	0	0	0	0	0	0	0	0	0
NL-N3C	Low Level	0	74	74	0	58	58	0	0	0	0	0	0	0	0	0	0	0	0	0	0	0	0
	Mid level	0	74	74	0	59	59	0	0	0	0	0	0	0	0	0	0	0	0	0	0	0	0
	High Level	0	76	76	0	60	60	0	0	0	0	0	0	0	0	0	0	0	0	0	0	0	0
NL-N3D	Low Level	0	76	76	0	62	62	0	0	0	0	0	0	0	0	0	0	0	0	0	0	0	0
	Mid level	0	77	77	0	63	63	0	0	0	0	0	0	0	0	0	0	0	0	0	0	0	0
	High Level	0	77	77	0	64	64	0	0	0	0	0	0	0	0	0	0	0	0	0	0	0	0
NL-N3E	Low Level	0	71	71	0	56	56	0	0	0	0	0	0	0	0	0	0	0	0	0	0	0	0
	Mid level	0	72	72	0	57	57	0	0	0	0	0	0	0	0	0	0	0	0	0	0	0	0
	High Level	0	73	73	0	58	58	0	0	0	0	0	0	0	0	0	0	0	0	0	0	0	0
NL-N3F	Low Level	0	74	74	0	61	61	0	0	0	0	0	0	0	0	0	0	0	0	0	0	0	0
	Mid level	0	76	76	0	62	62	0	0	0	0	0	0	0	0	0	0	0	0	0	0	0	0
	High Level	0	76	76	0	62	62	0	0	0	0	0	0	0	0	0	0	0	0	0	0	0	0
NL-N3G	Low Level	0	72	72	0	57	57	0	0	0	0	0	0	0	0	0	0	0	0	0	0	0	0
	Mid level	0	73	73	0	60	60	0	0	0	0	0	0	0	0	0	0	0	0	0	0	0	0
	High Level	0	76	76	0	61	61	0	0	0	0	0	0	0	0	0	0	0	0	0	0	0	0
NL-N3H	Low Level	0	74	74	0	61	61	0	0	0	0	0	0	0	0	0	0	0	0	0	0	0	0
	Mid level	0	74	74	0	61	61	0	0	0	0	0	0	0	0	0	0	0	0	0	0	0	0
	High Level	0	76	76	0	62	62	0	0	0	0	0	0	0	0	0	0	0	0	0	0	0	0
NL-N3I	Low Level	0	69	69	0	61	61	0	0	0	0	0	0	0	0	0	0	0	0	0	0	0	0
	Mid level	0	70	70	0	61	61	0	0	0	0	0	0	0	0	0	0	0	0	0	0	0	0
	High Level	0	71	71	0	62	62	0	0	0	0	0	0	0	0	0	0	0	0	0	0	0	0
NL-N4A	Low Level	0	65	65	0	55	55	0	0	0	0	0	0	0	0	0	0	0	0	0	0	0	0
	Mid level	0	66	66	0	55	55	0	0	0	0	0	0	0	0	0	0	0	0	0	0	0	0
	High Level	0	68	68	0	56	56	0	0	0	0	0	0	0	0	0	0	0	0	0	0	0	0
NL-N4B	Low Level	0	65	65	0	55	55	0	0	0	0	0	0	0	0	0	0	0	0	0	0	0	0
	Mid level	0	66	66	0	56	56	0	0	0	0	0	0	0	0	0	0	0	0	0	0	0	0
	High Level	0	68	68	0	56	56	0	0	0	0	0	0	0	0	0	0	0	0	0	0	0	0
NL-N5A	Low Level	0	66	66	0	56	56	0	0	0	0	0	0	0	0	0	0	0	0	0	0	0	0
	Mid level	0	66	66	0	56	56	0	0	0	0	0	0	0	0	0	0	0	0	0	0	0	0
	High Level	0	67	67	0	57	57	0	0	0	0	0	0	0	0	0	0	0	0	0	0	0	0
NL-N5B	Low Level	0	68	68	0	56	56	0	0	0	0	0	0	0	0	0	0	0	0	0	0	0	0
	Mid level	0	68	68	0	57	57	0	0	0	0	0	0	0	0	0	0	0	0	0	0	0	0
	High Level	0	69	69	0	57	57	0	0	0	0	0	0	0	0	0	0	0	0	0	0	0	0

Table D6 Predicted Traffic Noise Levels - L₁₀(10)peak hour, dB

NSR	Floor	Unmitigated		Mitigated		NSRs represented		Unmitigated Traffic Noise Impacts		Number of Noise Sensitive Receivers Exposed to Traffic Noise Impacts				Residual Impacts									
		Existing	New	Total	Existing	New	Dwellings	Other	Dwellings	Other	Benefited by mitigation		Protected by mitigation		Dwellings	Other NSRs							
											Dwellings	Other	Dwellings	Other									
NL-N6A	Low Level	0	69	69	0	55	0	0	0	0	0	0	0	0	0	0							
	Mid level	0	69	69	0	57	0	0	0	0	0	0	0	0	0	0							
	High Level	0	70	70	0	56	2	0	0	0	0	0	0	0	0	0							
NL-N6B	Low Level	0	70	70	0	59	0	0	0	0	0	0	0	0	0	0							
	Mid level	0	70	70	0	59	0	0	0	0	0	0	0	0	0	0							
	High Level	0	71	71	0	60	2	0	2	0	2	0	0	0	0	0							
NL-N7A	Low Level	0	78	78	0	62	0	0	0	0	0	0	0	0	0	0							
	Mid level	0	78	78	0	63	0	0	0	0	0	0	0	0	0	0							
	High Level	0	79	79	0	64	1	0	1	0	1	0	0	0	0	0							
NL-N7B	Low Level	0	76	76	0	61	0	0	0	0	0	0	0	0	0	0							
	Mid level	0	76	76	0	62	0	0	0	0	0	0	0	0	0	0							
	High Level	0	77	77	0	64	0	0	0	0	0	0	0	0	0	0							
NL-N7C	Low Level	0	81	81	0	65	0	0	0	0	0	0	0	0	0	0							
	Mid level	0	83	83	0	66	0	0	0	0	0	0	0	0	0	0							
	High Level	0	84	84	0	69	0	0	0	0	0	0	0	0	0	0							
NL-N7D	Low Level	0	83	83	0	67	0	0	0	0	0	0	0	0	0	0							
	Mid level	0	84	84	0	68	0	0	0	0	0	0	0	0	0	0							
	High Level	0	84	84	0	70	1	0	1	0	1	0	0	0	0	0							
NL-N7E	Low Level	0	77	77	0	63	0	0	0	0	0	0	0	0	0	0							
	Mid level	0	77	77	0	65	0	0	0	0	0	0	0	0	0	0							
	High Level	0	77	77	0	66	0	0	0	0	0	0	0	0	0	0							
NL-N7F	Low Level	0	78	78	0	66	0	0	0	0	0	0	0	0	0	0							
	Mid level	0	80	80	0	68	0	0	0	0	0	0	0	0	0	0							
	High Level	0	81	81	0	70	1	0	1	0	1	0	0	0	0	0							
NL-N8A	Low Level	0	73	73	0	60	0	0	0	0	0	0	0	0	0	0							
	Mid level	0	74	74	0	61	0	0	0	0	0	0	0	0	0	0							
	High Level	0	74	74	0	62	1	0	1	0	1	0	0	0	0	0							
NL-N8B	Low Level	0	78	78	0	62	0	0	0	0	0	0	0	0	0	0							
	Mid level	0	78	78	0	63	0	0	0	0	0	0	0	0	0	0							
	High Level	0	78	78	0	64	1	0	1	0	1	0	0	0	0	0							
NL-N8C	Low Level	0	85	85	0	58	0	0	0	0	0	0	0	0	0	0							
	Mid level	0	85	85	0	60	0	0	0	0	0	0	0	0	0	0							
	High Level	0	87	87	0	62	0	0	0	0	0	0	0	0	0	0							
NL-N8D	Low Level	0	72	72	0	60	0	0	0	0	0	0	0	0	0	0							
	Mid level	0	72	72	0	60	0	0	0	0	0	0	0	0	0	0							
	High Level	0	73	73	0	61	1	0	1	0	1	0	0	0	0	0							
NL-N8A	Low Level	0	74	74	0	63	0	0	0	0	0	0	0	0	0	0							
	Mid level	0	78	78	0	64	0	0	0	0	0	0	0	0	0	0							
	High Level	0	78	78	0	64	1	0	1	0	1	0	0	0	0	0							
NL-N8B	Low Level	0	73	73	0	59	0	0	0	0	0	0	0	0	0	0							
	Mid level	0	73	73	0	61	0	0	0	0	0	0	0	0	0	0							
	High Level	0	78	78	0	63	0	0	0	0	0	0	0	0	0	0							
Sub-total															31	0	20	0	31	0	20	0	0

Table D6 Predicted Traffic Noise Levels - L_A(Night) Leq, dB

NSR	Floor	Unmitigated		Mitigated		NSRs represented		Unmitigated Traffic Noise Impacts		Beneficial by mitigation		Number of Noise Sensitive Receivers Exposed to Traffic Noise Impacts		Comment regarding mitigated criteria exceedance		Residual Impacts		
		Existing	New	Existing	New	Dwellings	Other	Dwellings	Other	Dwellings	Other	Dwellings	Other	Dwellings	Other	Dwellings	Other	
Tsing Lung Tau Section																		
TLT-N1A	Low Level	70	65	71	70	65	71	14	0	0	0	0	0	0	Partially attributable to R10 Roads	14	0	
	Mid level	72	68	74	72	68	74	15	0	0	0	0	0	0	Partially attributable to R10 Roads	15	0	
TLT-N1B	High Level	73	70	76	73	70	76	15	0	0	0	0	0	0	Partially attributable to R10 Roads	15	0	
	Low Level	71	65	72	71	65	72	14	0	0	0	0	0	0	Partially attributable to R10 Roads	14	0	
TLT-N1C	Mid level	73	68	74	73	68	74	15	0	0	0	0	0	0	Partially attributable to R10 Roads	15	0	
	High Level	73	70	76	73	70	76	15	0	0	0	0	0	0	Partially attributable to R10 Roads	15	0	
TLT-N1D	Low Level	71	65	72	71	65	72	14	0	0	0	0	0	0	Partially attributable to R10 Roads	14	0	
	Mid level	73	70	74	73	70	74	15	0	0	0	0	0	0	Partially attributable to R10 Roads	15	0	
TLT-N1E	High Level	73	67	74	73	67	74	15	0	0	0	0	0	0	Partially attributable to R10 Roads	15	0	
	Low Level	72	69	74	72	69	74	15	0	0	0	0	0	0	Partially attributable to R10 Roads	15	0	
TLT-N1F	Mid level	76	65	76	76	65	76	14	0	0	0	0	0	0	NOT attributable to R10 Roads	0	0	
	High Level	73	64	74	73	64	74	14	0	0	0	0	0	0	Partially attributable to R10 Roads	14	0	
TLT-N1G	Low Level	71	66	72	71	66	72	15	0	0	0	0	0	0	Partially attributable to R10 Roads	15	0	
	Mid level	70	68	72	70	68	72	15	0	0	0	0	0	0	Partially attributable to R10 Roads	15	0	
TLT-N1H	High Level	69	62	70	69	62	70	14	0	0	0	0	0	0	Partially attributable to R10 Roads	0	0	
	Low Level	68	64	69	68	64	69	15	0	0	0	0	0	0	Partially attributable to R10 Roads	15	0	
TLT-N1I	High Level	67	66	70	67	66	70	9	0	0	0	0	0	0	Partially attributable to R10 Roads	0	0	
	Low Level	69	64	70	69	64	70	10	0	0	0	0	0	0	Partially attributable to R10 Roads	10	0	
TLT-N1J	Mid level	72	67	73	72	67	73	10	0	0	0	0	0	0	Partially attributable to R10 Roads	10	0	
	High Level	73	68	76	73	68	76	10	0	0	0	0	0	0	Partially attributable to R10 Roads	10	0	
TLT-N1K	Low Level	59	56	61	59	56	61	19	0	0	0	0	0	0	Partially attributable to R10 Roads	0	0	
	Mid level	64	65	68	64	65	68	19	0	0	0	0	0	0	Partially attributable to R10 Roads	0	0	
TLT-N1L	High Level	60	58	62	60	58	62	19	0	0	0	0	0	0	Partially attributable to R10 Roads	0	0	
	Low Level	62	61	64	62	61	64	20	0	0	0	0	0	0	Partially attributable to R10 Roads	0	0	
TLT-N1M	Mid level	64	65	67	64	65	67	19	0	0	0	0	0	0	Partially attributable to R10 Roads	0	0	
	High Level	63	64	83	63	64	83	6	0	0	0	0	0	0	NOT attributable to R10 Roads	0	0	
TLT-N1N	Low Level	N/A	N/A	N/A	N/A	N/A	N/A	0	0	0	0	0	0	0	NOT attributable to R10 Roads	0	0	
	Mid level	83	85	83	83	85	83	6	0	0	0	0	0	0	NOT attributable to R10 Roads	0	0	
TLT-N1O	High Level	78	64	78	78	64	78	5	0	0	0	0	0	0	NOT attributable to R10 Roads	0	0	
	Low Level	N/A	N/A	N/A	N/A	N/A	N/A	0	0	0	0	0	0	0	NOT attributable to R10 Roads	0	0	
TLT-N1P	Mid level	79	65	79	79	65	79	5	0	0	0	0	0	0	NOT attributable to R10 Roads	0	0	
	High Level	63	69	70	63	69	70	0	0	0	0	0	0	0	NOT attributable to R10 Roads	0	0	
TLT-N1Q	Low Level	N/A	N/A	N/A	N/A	N/A	N/A	0	0	0	0	0	0	0	NOT attributable to R10 Roads	0	0	
	Mid level	64	69	70	64	69	70	0	0	0	0	0	0	0	NOT attributable to R10 Roads	0	0	
TLT-N1R	High Level	N/A	N/A	N/A	N/A	N/A	N/A	0	0	0	0	0	0	0	NOT attributable to R10 Roads	0	0	
	Low Level	63	65	67	63	65	67	0	0	0	0	0	0	0	NOT attributable to R10 Roads	0	0	
TLT-N1S	Mid level	64	66	68	64	66	68	0	0	0	0	0	0	0	NOT attributable to R10 Roads	0	0	
	High Level	86	67	86	86	67	86	3	0	0	0	0	0	0	NOT attributable to R10 Roads	0	0	
TLT-N1T	Low Level	84	68	84	84	68	84	3	0	0	0	0	0	0	NOT attributable to R10 Roads	0	0	
	Mid level	83	67	83	83	67	83	0	0	0	0	0	0	0	NOT attributable to R10 Roads	0	0	
TLT-N1U	High Level	82	68	83	82	68	82	0	0	0	0	0	0	0	NOT attributable to R10 Roads	0	0	
	Low Level	85	65	85	85	65	85	3	0	0	0	0	0	0	NOT attributable to R10 Roads	0	0	
TLT-N1V	Mid level	85	66	86	86	66	86	3	0	0	0	0	0	0	NOT attributable to R10 Roads	0	0	
	High Level	84	66	84	84	66	84	3	0	0	0	0	0	0	NOT attributable to R10 Roads	0	0	
TLT-N1W	Low Level	85	66	85	85	66	85	5	0	0	0	0	0	0	NOT attributable to R10 Roads	0	0	
	Mid level	84	66	84	84	66	84	5	0	0	0	0	0	0	NOT attributable to R10 Roads	0	0	
TLT-N1X	High Level	84	66	84	84	66	84	5	0	0	0	0	0	0	NOT attributable to R10 Roads	0	0	
	Sub-total																	339
																	537	0
																	256	0

Table D4 Predicted Traffic Noise Levels - L₁₀(pass) Leq, dB

NSR	Floor	Unmitigated		Mitigated		NSRs represented		Unmitigated Traffic Noise Impacts		Benefited by mitigation		Number of Noise Sensitive Receivers Exposed to Traffic Noise Impacts		Residual Impacts				
		Existing	New	Existing	New	Dwelling	Other	Dwelling	Other	Dwelling	Other	Dwelling	Other	Dwelling	Other	Dwelling	Other	
		Total	Total	Total	Total													
TLC-N1A	Low Level	0	64	0	64	0	64	0	0	0	0	0	0	0	0	0	0	0
	Mid level	0	65	0	65	0	65	0	0	0	0	0	0	0	0	0	0	0
	High Level	0	65	0	65	0	65	0	0	0	0	0	0	0	0	0	0	0
TLC-N1B	Low Level	0	64	0	64	0	64	0	0	0	0	0	0	0	0	0	0	0
	Mid level	0	65	0	65	0	65	0	0	0	0	0	0	0	0	0	0	0
	High Level	0	65	0	65	0	65	0	0	0	0	0	0	0	0	0	0	0
TLC-N2A	Low Level	0	65	0	65	0	65	0	0	0	0	0	0	0	0	0	0	0
	Mid level	0	66	0	66	0	66	0	0	0	0	0	0	0	0	0	0	0
	High Level	0	66	0	66	0	66	0	0	0	0	0	0	0	0	0	0	0
TLC-N2B	Low Level	0	65	0	65	0	65	0	0	0	0	0	0	0	0	0	0	0
	Mid level	0	66	0	66	0	66	0	0	0	0	0	0	0	0	0	0	0
	High Level	0	66	0	66	0	66	0	0	0	0	0	0	0	0	0	0	0
TLC-N3	Low Level	0	63	0	63	0	63	13	0	0	0	0	0	0	0	0	0	0
	Mid level	0	64	0	64	0	64	13	0	0	0	0	0	0	0	0	0	0
	High Level	0	65	0	65	0	65	13	0	0	0	0	0	0	0	0	0	0
TLC-N4A	Low Level	0	64	0	64	0	64	1	0	0	0	0	0	0	0	0	0	0
	Mid level	0	64	0	64	0	64	1	0	0	0	0	0	0	0	0	0	0
	High Level	0	64	0	64	0	64	1	0	0	0	0	0	0	0	0	0	0
TLC-N4B	Low Level	0	64	0	64	0	64	1	0	0	0	0	0	0	0	0	0	0
	Mid level	0	64	0	64	0	64	1	0	0	0	0	0	0	0	0	0	0
	High Level	0	64	0	64	0	64	1	0	0	0	0	0	0	0	0	0	0
TLC-P1	Low Level	0	61	0	61	0	61	3	0	0	0	0	0	0	0	0	0	0
	Mid level	0	61	0	61	0	61	3	0	0	0	0	0	0	0	0	0	0
	High Level	0	62	0	62	0	62	3	0	0	0	0	0	0	0	0	0	0
TLC-P2	Low Level	0	57	0	57	0	57	3	0	0	0	0	0	0	0	0	0	0
	Mid level	0	58	0	58	0	58	3	0	0	0	0	0	0	0	0	0	0
	High Level	0	58	0	58	0	58	3	0	0	0	0	0	0	0	0	0	0
TLC-P3	Low Level	0	59	0	59	0	59	3	0	0	0	0	0	0	0	0	0	0
	Mid level	0	60	0	60	0	60	3	0	0	0	0	0	0	0	0	0	0
	High Level	0	60	0	60	0	60	3	0	0	0	0	0	0	0	0	0	0
TLC-P4	Low Level	0	60	0	60	0	60	5	0	0	0	0	0	0	0	0	0	0
	Mid level	0	60	0	60	0	60	6	0	0	0	0	0	0	0	0	0	0
	High Level	0	61	0	61	0	61	5	0	0	0	0	0	0	0	0	0	0
TLC-P5	Low Level	0	59	0	59	0	59	7	0	0	0	0	0	0	0	0	0	0
	Mid level	0	60	0	60	0	60	6	0	0	0	0	0	0	0	0	0	0
	High Level	0	61	0	61	0	61	7	0	0	0	0	0	0	0	0	0	0
TLC-P6	Low Level	0	59	0	59	0	59	6	0	0	0	0	0	0	0	0	0	0
	Mid level	0	60	0	60	0	60	9	0	0	0	0	0	0	0	0	0	0
	High Level	0	61	0	61	0	61	9	0	0	0	0	0	0	0	0	0	0
TLC-P7	Low Level	0	59	0	59	0	59	10	0	0	0	0	0	0	0	0	0	0
	Mid level	0	60	0	60	0	60	10	0	0	0	0	0	0	0	0	0	0
	High Level	0	62	0	62	0	62	10	0	0	0	0	0	0	0	0	0	0
Sub-total														214	0	0	0	0

Table D4 Predicted Traffic Noise Levels - L₁₀ (Highway hours), dB

NSR	Floor	Unmitigated		Mitigated		NSRs represented		Unmitigated Traffic Noise Impacts		Number of Noise Sensitive Receivers Exposed to Traffic Noise Impacts		Comment regarding mitigated criteria exceedance		Residual Impacts		
		Existing	New	Existing	Total	Dwellings	Other	Dwellings	Other	Dwellings	Other	Dwellings	Other	Dwellings	Other NSRs	
SL-N1A (Psychiatric Centre)	Low Level	73	66	73	48	73	0	1	0	1	0	0	0	0	0	0
	Mid level	75	67	76	50	76	0	0	0	0	0	0	0	0	0	0
	High Level	78	68	78	53	78	0	0	0	0	0	0	0	0	0	0
SL-N1B (Psychiatric Centre)	Low Level	77	67	77	49	77	0	0	0	0	0	0	0	0	0	0
	Mid level	78	68	77	52	77	0	0	0	0	0	0	0	0	0	0
	High Level	78	68	78	54	78	0	0	0	0	0	0	0	0	0	0
SL-N2A (Hospital library)	Low Level	78	76	80	78	78	0	1	0	1	0	1	0	0	0	0
	Mid level	N/A	N/A	N/A	N/A	N/A	0	0	0	0	0	0	0	0	0	0
	High Level	N/A	N/A	N/A	N/A	N/A	0	0	0	0	0	0	0	0	0	0
SL-N2B (Hospital library)	Low Level	78	75	80	78	83	0	0	0	0	0	0	0	0	0	0
	Mid level	N/A	N/A	N/A	N/A	N/A	0	0	0	0	0	0	0	0	0	0
	High Level	N/A	N/A	N/A	N/A	N/A	0	0	0	0	0	0	0	0	0	0
SL-N2C (Staff Quarter)	Low Level	78	72	78	74	74	3	0	3	0	3	0	0	0	0	0
	Mid level	76	73	78	76	78	3	0	3	0	3	0	0	0	0	0
	High Level	77	74	78	77	78	3	0	3	0	3	0	0	0	0	0
SL-N2E (Staff Quarter)	Low Level	73	67	74	63	73	2	0	2	0	0	0	0	0	0	0
	Mid level	N/A	N/A	N/A	N/A	N/A	0	0	0	0	0	0	0	0	0	0
	High Level	N/A	N/A	N/A	N/A	N/A	0	0	0	0	0	0	0	0	0	0
SL-N2F (Hospital)	Low Level	68	64	70	69	69	0	0	0	0	0	0	0	0	0	0
	Mid level	74	69	74	74	74	0	1	0	1	0	1	0	0	0	0
	High Level	78	70	78	76	78	0	0	0	0	0	0	0	0	0	0
SL-N2G (Hospital)	Low Level	63	61	66	62	62	0	0	0	0	0	0	0	0	0	0
	Mid level	68	67	71	68	68	0	0	0	0	0	0	0	0	0	0
	High Level	72	69	74	72	72	0	1	0	1	0	0	0	0	0	0
SL-N3A	Low Level	78	68	78	78	83	78	2	0	2	0	0	0	0	0	0
	Mid level	78	71	79	65	79	2	0	2	0	0	0	0	0	0	0
	High Level	79	74	80	68	79	2	0	2	0	0	0	0	0	0	0
SL-N3B	Low Level	78	70	80	79	83	80	0	0	0	0	0	0	0	0	0
	Mid level	80	73	80	80	80	0	0	0	0	0	0	0	0	0	0
	High Level	80	76	81	80	70	80	0	0	0	0	0	0	0	0	0
SL-N3C	Low Level	81	72	81	81	81	1	0	1	0	0	0	0	0	0	0
	Mid level	82	76	82	82	82	2	0	2	0	0	0	0	0	0	0
	High Level	82	78	83	82	82	2	0	2	0	0	0	0	0	0	0
SL-N3D	Low Level	77	71	78	77	81	78	1	0	1	0	0	0	0	0	0
	Mid level	81	75	82	81	83	81	2	0	2	0	0	0	0	0	0
	High Level	81	77	83	81	87	81	2	0	2	0	0	0	0	0	0
SL-N3E	Low Level	78	70	78	78	82	78	0	0	0	0	0	0	0	0	0
	Mid level	81	74	81	81	84	81	0	0	0	0	0	0	0	0	0
	High Level	81	77	82	81	87	81	0	0	0	0	0	0	0	0	0
SL-N3F	Low Level	84	74	84	83	86	84	1	0	1	0	0	0	0	0	0
	Mid level	84	78	86	84	87	84	2	0	2	0	0	0	0	0	0
	High Level	84	80	85	84	89	84	2	0	2	0	0	0	0	0	0
SL-N3G	Low Level	84	74	84	84	86	84	1	0	1	0	0	0	0	0	0
	Mid level	84	77	85	84	87	84	2	0	2	0	0	0	0	0	0
	High Level	84	79	86	84	89	84	2	0	2	0	0	0	0	0	0
SL-N3H	Low Level	83	71	83	82	86	83	0	0	0	0	0	0	0	0	0
	Mid level	83	74	83	82	87	83	0	0	0	0	0	0	0	0	0
	High Level	82	76	83	82	87	83	0	0	0	0	0	0	0	0	0
SL-N3I	Low Level	81	70	81	81	84	81	1	0	1	0	0	0	0	0	0
	Mid level	81	72	81	81	86	81	2	0	2	0	0	0	0	0	0
	High Level	81	74	82	81	87	81	2	0	2	0	0	0	0	0	0
SL-N4A	Low Level	74	64	74	74	61	74	1	0	1	0	0	0	0	0	0
	Mid level	74	65	75	74	62	74	2	0	2	0	0	0	0	0	0
	High Level	75	66	76	75	64	75	2	0	2	0	0	0	0	0	0
SL-N4B	Low Level	78	64	71	78	60	78	1	0	1	0	0	0	0	0	0
	Mid level	72	66	73	72	65	73	2	0	2	0	0	0	0	0	0
	High Level	74	68	75	74	66	75	2	0	2	0	0	0	0	0	0

Table D4 Predicted Traffic Noise Levels - L₁₀ (Highway hours), dB

NSR	Floor	Unmitigated			Mitigated			NSRs represented		Unmitigated Traffic Noise Impacts				Number of Noise Sensitive Receivers Exposed to Traffic Noise Impacts				Residual Impacts	
		Existing	New	Total	Existing	New	Total	Dwellings	Other	Dwellings	Other	Benefited by mitigation		Protected by mitigation		Dwellings	Other NSRs		
												Dwellings	Other	Dwellings	Other				
SL-N4C	Low Level	67	59	68	67	56	68	1	0	0	0	0	0	0	0	0	0	0	
	Mid level	67	60	68	67	59	69	2	0	0	0	0	0	0	0	0	0	0	
	High Level	70	64	71	70	63	71	2	0	0	0	0	0	0	0	0	0	0	
SL-N4D	Low Level	69	53	69	69	49	69	1	0	0	0	0	0	0	0	0	0	0	
	Mid level	69	54	69	69	51	69	2	0	0	0	0	0	0	0	0	0	0	
	High Level	69	58	69	69	54	69	1	0	0	0	0	0	0	0	0	0	0	
SL-N4E	Low Level	64	55	64	64	51	64	1	0	0	0	0	0	0	0	0	0	0	
	Mid level	64	57	65	64	53	64	2	0	0	0	0	0	0	0	0	0	0	
	High Level	65	60	66	65	55	65	1	0	0	0	0	0	0	0	0	0	0	
SL-N4F	Low Level	57	55	59	57	52	58	1	0	0	0	0	0	0	0	0	0	0	
	Mid level	60	58	62	60	57	62	2	0	0	0	0	0	0	0	0	0	0	
	High Level	65	62	67	65	60	66	1	0	0	0	0	0	0	0	0	0	0	
SL-N4G	Low Level	58	55	59	58	50	59	0	0	0	0	0	0	0	0	0	0	0	
	Mid level	60	57	62	60	54	61	0	0	0	0	0	0	0	0	0	0	0	
	High Level	67	63	68	67	59	66	0	0	0	0	0	0	0	0	0	0	0	
SL-N4H	Low Level	74	63	74	74	61	74	1	0	0	0	0	0	0	0	0	0	0	
	Mid level	74	65	74	74	64	74	2	0	0	0	0	0	0	0	0	0	0	
	High Level	78	67	78	78	64	78	1	0	0	0	0	0	0	0	0	0	0	
SL-N4I	Low Level	74	63	76	74	61	74	0	0	0	0	0	0	0	0	0	0	0	
	Mid level	76	64	78	76	64	76	0	0	0	0	0	0	0	0	0	0	0	
	High Level	78	65	78	78	63	78	0	0	0	0	0	0	0	0	0	0	0	
SL-N5A	Low Level	78	62	78	78	59	78	0	0	0	0	0	0	0	0	0	0	0	
	Mid level	80	65	80	79	61	79	0	0	0	0	0	0	0	0	0	0	0	
	High Level	81	70	81	80	65	80	0	0	0	0	0	0	0	0	0	0	0	
SL-N5B	Low Level	79	64	78	78	60	78	6	0	0	0	0	0	0	0	0	0	0	
	Mid level	80	65	80	79	61	78	6	0	0	0	0	0	0	0	0	0	0	
	High Level	81	70	81	80	66	81	6	0	0	0	0	0	0	0	0	0	0	
SL-N5C	Low Level	78	64	78	77	58	77	6	0	0	0	0	0	0	0	0	0	0	
	Mid level	79	66	78	78	60	78	6	0	0	0	0	0	0	0	0	0	0	
	High Level	81	70	81	80	64	80	6	0	0	0	0	0	0	0	0	0	0	
SL-N5D	Low Level	71	61	72	71	50	71	0	0	0	0	0	0	0	0	0	0	0	
	Mid level	79	65	78	78	52	78	0	0	0	0	0	0	0	0	0	0	0	
	High Level	80	69	80	80	57	80	0	0	0	0	0	0	0	0	0	0	0	
SL-N6A	Low Level	81	64	81	81	61	81	3	0	0	0	0	0	0	0	0	0	0	
	Mid level	81	65	81	81	61	81	3	0	0	0	0	0	0	0	0	0	0	
	High Level	81	68	81	81	62	81	3	0	0	0	0	0	0	0	0	0	0	
SL-N6B	Low Level	84	67	84	84	60	84	1	0	0	0	0	0	0	0	0	0	0	
	Mid level	84	68	84	84	61	84	1	0	0	0	0	0	0	0	0	0	0	
	High Level	84	68	84	84	62	84	1	0	0	0	0	0	0	0	0	0	0	
SL-N6C	Low Level	80	64	79	80	55	80	3	0	0	0	0	0	0	0	0	0	0	
	Mid level	80	65	80	80	57	80	3	0	0	0	0	0	0	0	0	0	0	
	High Level	81	68	80	81	59	81	3	0	0	0	0	0	0	0	0	0	0	
SL-N7A	Low Level	81	60	81	81	60	81	1	0	0	0	0	0	0	0	0	0	0	
	Mid level	82	61	81	82	60	81	1	0	0	0	0	0	0	0	0	0	0	
	High Level	82	61	82	82	61	82	0	0	0	0	0	0	0	0	0	0	0	
SL-N7B	Low Level	79	60	79	79	60	79	0	0	0	0	0	0	0	0	0	0	0	
	Mid level	80	61	79	79	60	79	1	0	0	0	0	0	0	0	0	0	0	
	High Level	80	61	80	80	61	80	0	0	0	0	0	0	0	0	0	0	0	
SL-N7C	Low Level	77	60	77	77	60	77	0	0	0	0	0	0	0	0	0	0	0	
	Mid level	77	61	77	77	60	77	1	0	0	0	0	0	0	0	0	0	0	
	High Level	78	61	77	77	61	77	1	0	0	0	0	0	0	0	0	0	0	
SL-N7D	Low Level	77	60	77	77	60	77	0	0	0	0	0	0	0	0	0	0	0	
	Mid level	77	61	77	77	60	77	1	0	0	0	0	0	0	0	0	0	0	
	High Level	77	61	77	77	60	77	0	0	0	0	0	0	0	0	0	0	0	
SL-N7E	Low Level	77	60	77	77	60	77	0	0	0	0	0	0	0	0	0	0	0	
	Mid level	77	61	77	77	60	77	0	0	0	0	0	0	0	0	0	0	0	
	High Level	77	61	77	77	60	77	0	0	0	0	0	0	0	0	0	0	0	
SL-N7F	Low Level	74	60	74	74	60	74	0	0	0	0	0	0	0	0	0	0	0	
	Mid level	74	61	74	74	60	74	1	0	0	0	0	0	0	0	0	0	0	
	High Level	76	61	76	76	60	76	1	0	0	0	0	0	0	0	0	0	0	

Table D6 Predicted Traffic Noise Levels - L₁₀(pass) 2001, dB

NSR	Floor	Unmitigated		Mitigated		NSRs represented		Unmitigated Traffic Noise Impacts		Benefited by mitigation		Comment regarding mitigated criteria exceedance		Residual Impacts	
		Existing	Total	Existing	Total	Dwellings	Other	Dwellings	Other	Dwellings	Other	Dwellings	Other	Dwellings	Other
		60	74	74	59	74	0	0	0	0	0	0	0	0	0
SL-N7G	Low Level	74	60	74	59	74	0	0	0	0	0	0	0	0	0
	Mid level	74	60	74	60	74	1	0	0	0	0	0	0	0	0
	High Level	74	61	74	60	74	0	0	0	0	0	0	0	0	0
SL-N7H	Low Level	65	56	65	54	65	0	0	0	0	0	0	0	0	0
	Mid level	65	57	66	56	66	1	0	0	0	0	0	0	0	0
	High Level	68	60	69	59	69	0	0	0	0	0	0	0	0	0
SL-N8A	Low Level	84	59	84	59	84	0	0	0	0	0	0	0	0	0
	Mid level	86	60	86	60	86	1	0	0	0	0	0	0	0	0
	High Level	86	61	86	60	86	0	0	0	0	0	0	0	0	0
SL-N8B	Low Level	82	60	82	60	82	1	0	0	0	0	0	0	0	0
	Mid level	82	60	82	60	82	2	0	0	0	0	0	0	0	0
	High Level	82	61	82	60	82	0	0	0	0	0	0	0	0	0
SL-N8C	Low Level	77	58	77	58	77	0	0	0	0	0	0	0	0	0
	Mid level	77	60	77	56	77	1	0	0	0	0	0	0	0	0
	High Level	78	61	78	60	78	0	0	0	0	0	0	0	0	0
SL-N8D	Low Level	72	58	72	58	72	1	0	0	0	0	0	0	0	0
	Mid level	72	60	72	59	72	0	0	0	0	0	0	0	0	0
	High Level	74	61	74	60	74	0	0	0	0	0	0	0	0	0
SL-N8A	Low Level	67	58	67	57	67	2	0	0	0	0	0	0	0	0
	Mid level	69	59	69	58	69	2	0	0	0	0	0	0	0	0
	High Level	71	61	71	59	71	2	0	0	0	0	0	0	0	0
SL-N8B	Low Level	68	58	68	57	68	2	0	0	0	0	0	0	0	0
	Mid level	69	59	69	58	69	2	0	0	0	0	0	0	0	0
	High Level	71	60	71	59	70	2	0	0	0	0	0	0	0	0
SL-N10A	Low Level	71	69	73	67	64	69	1	0	0	0	0	0	0	0
	Mid level	74	70	76	71	64	72	1	0	0	0	0	0	0	0
	High Level	75	70	76	74	66	74	1	0	0	0	0	0	0	0
SL-N10B	Low Level	73	65	74	72	64	73	0	0	0	0	0	0	0	0
	Mid level	78	66	78	77	65	77	0	0	0	0	0	0	0	0
	High Level	80	67	80	78	66	78	0	0	0	0	0	0	0	0
SL-N10C	Low Level	68	68	71	62	67	68	0	0	0	0	0	0	0	0
	Mid level	71	69	73	67	68	70	0	0	0	0	0	0	0	0
	High Level	73	69	74	71	65	72	0	0	0	0	0	0	0	0
SL-N11A	Low Level	65	65	68	63	64	67	2	0	0	0	0	0	0	0
	Mid level	74	67	74	72	65	73	2	0	0	0	0	0	0	0
	High Level	76	69	76	73	67	74	2	0	0	0	0	0	0	0
SL-N11B	Low Level	54	64	64	54	64	64	0	0	0	0	0	0	0	0
	Mid level	55	66	66	55	65	65	0	0	0	0	0	0	0	0
	High Level	57	68	68	56	66	67	0	0	0	0	0	0	0	0
SL-N11C	Low Level	63	63	66	61	63	65	0	0	0	0	0	0	0	0
	Mid level	75	65	75	71	64	71	0	0	0	0	0	0	0	0
	High Level	75	66	75	73	64	74	0	0	0	0	0	0	0	0
SL-N12A	Low Level	67	64	69	64	58	64	4	0	0	0	0	0	0	0
	Mid level	68	64	69	64	59	65	4	0	0	0	0	0	0	0
	High Level	68	65	69	64	60	65	4	0	0	0	0	0	0	0
SL-N12B	Low Level	51	62	62	50	59	60	0	0	0	0	0	0	0	0
	Mid level	53	62	63	52	60	60	0	0	0	0	0	0	0	0
	High Level	56	64	64	54	61	62	0	0	0	0	0	0	0	0
SL-N12C	Low Level	73	64	73	72	59	72	0	0	0	0	0	0	0	0
	Mid level	73	65	74	73	60	73	0	0	0	0	0	0	0	0
	High Level	73	66	74	73	61	73	0	0	0	0	0	0	0	0
SL-N13A	Low Level	72	64	72	71	61	71	4	0	0	0	0	0	0	0
	Mid level	72	65	72	71	61	71	4	0	0	0	0	0	0	0
	High Level	72	66	73	71	62	72	4	0	0	0	0	0	0	0
SL-N13B	Low Level	51	62	63	49	61	61	0	0	0	0	0	0	0	0
	Mid level	53	63	64	52	61	62	0	0	0	0	0	0	0	0
	High Level	58	65	66	57	62	63	0	0	0	0	0	0	0	0
SL-N15	Low Level	57	70	70	57	69	69	5	0	0	0	0	0	0	0
	Mid level	57	71	71	57	70	70	6	0	0	0	0	0	0	0
	High Level	58	71	71	58	70	70	5	0	0	0	0	0	0	0

Table D6 Predicted Traffic Noise Levels - L_{Aeq}(night) average, dB

NSR	Floor	Unmitigated		Mitigated		NSRs represented		Unmitigated Traffic Noise Impacts				Number of Noise Sensitive Receivers Exposed to Traffic Noise Impacts				Residual Impacts	
		Existing	New	Total	Existing	New	Total	Dwellings	Other	Dwellings		Other		Dwellings	Other	Dwellings	Other
										Benefited by mitigation		Comment regarding mitigated criteria exceedance					
SL-N16	Low Level	45	68	69	45	68	2	0	0	0	0	0	0	0	0	0	0
	Mid level	49	70	70	49	69	3	0	0	0	0	0	0	0	0	0	0
SL-N17	High Level	53	70	70	54	69	0	0	0	0	0	0	0	0	0	0	0
	Low Level	47	70	70	47	68	2	0	0	0	0	0	0	0	0	0	0
SL-N18A	Mid level	N/A	N/A	N/A	N/A	N/A	0	0	0	0	0	0	0	0	0	0	0
	High Level	49	70	70	49	69	2	0	0	0	0	0	0	0	0	0	0
SL-N18A (Church at Stu Lam)	Low Level	42	66	66	42	65	0	1	0	0	0	0	0	0	0	0	0
	Mid level	N/A	N/A	N/A	N/A	N/A	0	0	0	0	0	0	0	0	0	0	0
SL-N18B (Church at Stu Lam)	Low Level	53	63	63	48	62	0	0	0	0	0	0	0	0	0	0	0
	Mid level	N/A	N/A	N/A	N/A	N/A	0	0	0	0	0	0	0	0	0	0	0
SL-N18A	High Level	N/A	N/A	N/A	N/A	N/A	0	0	0	0	0	0	0	0	0	0	0
	Low Level	44	69	69	43	67	3	0	0	0	0	0	0	0	0	0	0
SL-N19B	Mid level	46	70	70	45	68	3	0	0	0	0	0	0	0	0	0	0
	High Level	50	70	70	48	68	3	0	0	0	0	0	0	0	0	0	0
SL-N19C	Low Level	53	66	66	47	65	0	0	0	0	0	0	0	0	0	0	0
	Mid level	54	67	67	47	66	0	0	0	0	0	0	0	0	0	0	0
SL-N20A	High Level	55	68	68	49	67	0	0	0	0	0	0	0	0	0	0	0
	Low Level	48	68	68	48	67	0	0	0	0	0	0	0	0	0	0	0
SL-N20B	Mid level	50	69	69	50	67	0	0	0	0	0	0	0	0	0	0	0
	High Level	52	70	70	52	68	0	0	0	0	0	0	0	0	0	0	0
SL-N20C	Low Level	45	67	67	44	65	3	0	0	0	0	0	0	0	0	0	0
	Mid level	47	68	68	46	66	3	0	0	0	0	0	0	0	0	0	0
SL-N20B	High Level	55	68	68	53	67	3	0	0	0	0	0	0	0	0	0	0
	Low Level	54	64	64	44	64	0	0	0	0	0	0	0	0	0	0	0
SL-N20C	Mid level	55	66	66	46	65	0	0	0	0	0	0	0	0	0	0	0
	High Level	57	69	69	53	67	0	0	0	0	0	0	0	0	0	0	0
SL-N21A	Low Level	53	66	66	52	63	0	0	0	0	0	0	0	0	0	0	0
	Mid level	53	66	66	53	64	0	0	0	0	0	0	0	0	0	0	0
SL-N21B	High Level	55	69	69	53	67	0	0	0	0	0	0	0	0	0	0	0
	Low Level	43	62	62	43	62	1	0	0	0	0	0	0	0	0	0	0
SL-N21C	Mid level	44	64	64	44	64	1	0	0	0	0	0	0	0	0	0	0
	High Level	46	66	66	46	66	1	0	0	0	0	0	0	0	0	0	0
SL-N22A	Low Level	42	58	58	42	58	0	0	0	0	0	0	0	0	0	0	0
	Mid level	43	60	60	43	60	0	0	0	0	0	0	0	0	0	0	0
SL-N22B	High Level	45	62	62	45	62	0	0	0	0	0	0	0	0	0	0	0
	Low Level	43	62	62	43	62	0	0	0	0	0	0	0	0	0	0	0
SL-N22A	Mid level	44	63	63	44	63	0	0	0	0	0	0	0	0	0	0	0
	High Level	46	64	64	46	64	0	0	0	0	0	0	0	0	0	0	0
SL-N22B	Low Level	44	64	64	44	64	2	0	0	0	0	0	0	0	0	0	0
	Mid level	45	67	67	44	67	2	0	0	0	0	0	0	0	0	0	0
SL-N23A (Training Centre)	High Level	46	70	70	46	70	2	0	0	0	0	0	0	0	0	0	0
	Low Level	44	64	64	44	64	0	0	0	0	0	0	0	0	0	0	0
SL-N23B (Training Centre)	Mid level	45	67	67	45	67	0	0	0	0	0	0	0	0	0	0	0
	High Level	48	70	70	46	70	0	0	0	0	0	0	0	0	0	0	0
SL-P1	Low Level	60	61	60	60	48	0	1	0	0	0	0	0	0	0	0	0
	Mid level	61	62	61	60	62	0	0	0	0	0	0	0	0	0	0	0
SL-P2	High Level	61	64	61	61	49	0	0	0	0	0	0	0	0	0	0	0
	Low Level	61	59	61	61	48	0	0	0	0	0	0	0	0	0	0	0
SL-P1	Mid level	62	60	62	61	60	0	0	0	0	0	0	0	0	0	0	0
	High Level	62	61	62	62	49	0	0	0	0	0	0	0	0	0	0	0
SL-P1	Low Level	30	59	59	30	58	9	0	0	0	0	0	0	0	0	0	0
	Mid level	30	63	63	30	62	10	0	0	0	0	0	0	0	0	0	0
SL-P2	High Level	39	71	71	39	70	9	0	0	0	0	0	0	0	0	0	0
	Low Level	52	63	63	52	60	61	9	0	0	0	0	0	0	0	0	0
SL-P2	Mid level	58	68	68	58	64	66	10	0	0	0	0	0	0	0	0	0
	High Level	65	74	74	65	69	70	9	0	0	0	0	0	0	0	0	0

Table D6 Predicted Traffic Noise Levels - L₁₀ (Average Hourly), dB

NSR	Floor	Unmitigated		Mitigated		NSRs represented		Unmitigated Traffic Noise Impacts				Number of Noise Sensitive Receivers Exposed to Traffic Noise Impacts				Residual Impacts		
		Total		Total		Dwellings		Dwellings		Dwellings		Dwellings		Dwellings		Dwellings		
		Existing	New	Existing	New	Other	Other	Other	Other	Other	Other	Other	Other	Other	Other	Other	Other	
SKW-N25	Low Level	58	62	64	58	62	64	0	0	0	0	0	0	0	0	0	0	0
	Mid level	58	63	65	58	63	65	1	0	0	0	0	0	0	0	0	0	0
	High Level	58	65	66	58	64	65	1	0	0	0	0	0	0	0	0	0	0
SKW-N26	Low Level	58	64	65	58	63	64	1	0	0	0	0	0	0	0	0	0	0
	Mid level	58	64	65	58	64	65	1	0	0	0	0	0	0	0	0	0	0
	High Level	60	65	66	60	65	66	1	0	0	0	0	0	0	0	0	0	0
SKW-N27	Low Level	31	66	66	31	65	65	0	0	0	0	0	0	0	0	0	0	0
	Mid level	32	67	67	32	66	66	0	0	0	0	0	0	0	0	0	0	0
	High Level	33	68	68	33	70	70	0	0	0	0	0	0	0	0	0	0	0
SKW-N28	Low Level	40	66	66	40	65	65	1	0	0	0	0	0	0	0	0	0	0
	Mid level	41	67	67	41	67	67	1	0	0	0	0	0	0	0	0	0	0
	High Level	43	68	68	43	68	68	1	0	0	0	0	0	0	0	0	0	0
SKW-N29	Low Level	0	63	63	0	63	63	0	0	0	0	0	0	0	0	0	0	0
	Mid level	0	65	65	0	64	64	0	0	0	0	0	0	0	0	0	0	0
	High Level	0	66	66	0	65	65	0	0	0	0	0	0	0	0	0	0	0
SKW-N30 (School)	Low Level	45	61	62	45	61	61	0	1	0	0	0	0	0	0	0	0	0
	Mid level	45	62	62	45	61	62	0	0	0	0	0	0	0	0	0	0	0
	High Level	45	62	62	45	62	62	0	0	0	0	0	0	0	0	0	0	0
SKW-N31 (School)	Low Level	0	62	62	0	62	62	0	1	0	0	0	0	0	0	0	0	0
	Mid level	0	62	62	0	62	62	0	0	0	0	0	0	0	0	0	0	0
	High Level	0	63	63	0	63	63	0	0	0	0	0	0	0	0	0	0	0
SKW-N32 (School)	Low Level	56	63	64	56	63	64	0	1	0	0	0	0	0	0	0	0	0
	Mid level	56	64	64	56	63	64	0	0	0	0	0	0	0	0	0	0	0
	High Level	56	64	65	56	64	64	0	0	0	0	0	0	0	0	0	0	0
SKW-N33 (School)	Low Level	54	63	64	54	63	64	0	1	0	0	0	0	0	0	0	0	0
	Mid level	55	64	64	55	64	64	0	0	0	0	0	0	0	0	0	0	0
	High Level	55	64	65	55	64	64	0	0	0	0	0	0	0	0	0	0	0
SKW-N34	Low Level	56	65	66	56	65	66	1	0	0	0	0	0	0	0	0	0	0
	Mid level	57	65	66	57	65	66	1	0	0	0	0	0	0	0	0	0	0
	High Level	57	66	67	57	66	66	1	0	0	0	0	0	0	0	0	0	0
SKW-N35	Low Level	0	63	63	0	63	63	0	0	0	0	0	0	0	0	0	0	0
	Mid level	0	63	63	0	63	63	0	0	0	0	0	0	0	0	0	0	0
	High Level	0	64	64	0	64	64	0	0	0	0	0	0	0	0	0	0	0
SKW-N36	Low Level	0	65	65	0	65	65	0	0	0	0	0	0	0	0	0	0	0
	Mid level	0	66	66	0	66	66	0	0	0	0	0	0	0	0	0	0	0
	High Level	0	66	66	0	66	66	0	0	0	0	0	0	0	0	0	0	0
SKW-N37	Low Level	0	64	64	0	64	64	1	0	0	0	0	0	0	0	0	0	0
	Mid level	0	65	65	0	65	65	1	0	0	0	0	0	0	0	0	0	0
	High Level	0	66	66	0	66	66	1	0	0	0	0	0	0	0	0	0	0
SKW-N38	Low Level	47	63	64	47	63	63	1	0	0	0	0	0	0	0	0	0	0
	Mid level	48	64	64	48	64	64	1	0	0	0	0	0	0	0	0	0	0
	High Level	50	65	65	50	65	65	1	0	0	0	0	0	0	0	0	0	0
SKW-N39	Low Level	44	64	64	44	64	64	1	0	0	0	0	0	0	0	0	0	0
	Mid level	46	64	64	46	64	64	1	0	0	0	0	0	0	0	0	0	0
	High Level	49	65	65	49	65	65	1	0	0	0	0	0	0	0	0	0	0
SKW-N40	Low Level	0	61	61	0	61	61	0	0	0	0	0	0	0	0	0	0	0
	Mid level	0	62	62	0	62	62	0	0	0	0	0	0	0	0	0	0	0
	High Level	0	64	64	0	64	64	0	0	0	0	0	0	0	0	0	0	0
SKW-N41	Low Level	46	62	62	46	62	62	0	0	0	0	0	0	0	0	0	0	0
	Mid level	49	62	63	49	62	63	0	0	0	0	0	0	0	0	0	0	0
	High Level	53	63	64	53	63	64	0	0	0	0	0	0	0	0	0	0	0
SKW-N42	Low Level	0	63	63	0	63	63	1	0	0	0	0	0	0	0	0	0	0
	Mid level	0	64	64	0	64	64	1	0	0	0	0	0	0	0	0	0	0
	High Level	0	65	65	0	65	65	1	0	0	0	0	0	0	0	0	0	0
SKW-N43	Low Level	0	63	63	0	63	63	2	0	0	0	0	0	0	0	0	0	0
	Mid level	0	64	64	0	64	64	2	0	0	0	0	0	0	0	0	0	0
	High Level	0	64	64	0	64	64	2	0	0	0	0	0	0	0	0	0	0
SKW-N44	Low Level	0	63	63	0	63	63	5	0	0	0	0	0	0	0	0	0	0
	Mid level	0	64	64	0	64	64	5	0	0	0	0	0	0	0	0	0	0
	High Level	0	64	64	0	64	64	5	0	0	0	0	0	0	0	0	0	0

Table D6 Predicted Traffic Noise Levels - L₁₀ (night) Leq, dB

NSR	Floor	Unmitigated		Mitigated		NSRs represented		Unmitigated Traffic Noise Impacts		Number of Noise Sensitive Receivers Exposed to Traffic Noise Impacts				Residual Impacts	
		Existing	New	Existing	New	Total	Dwellings	Other	Dwellings	Other	Benefited by mitigation	Protected by mitigation	Comment regarding mitigation criteria exceedance	Dwellings	Other NSRs
SKW-N65	Low Level	0	64	0	64	64	2	0	0	0	0	0	0	0	0
	Mid level	0	65	0	65	65	2	0	0	0	0	0	0	0	0
	High Level	0	66	0	66	66	2	0	0	0	0	0	0	0	0
SKW-N66	Low Level	0	65	0	65	65	1	0	0	0	0	0	0	0	0
	Mid level	0	66	0	66	66	1	0	0	0	0	0	0	0	0
	High Level	0	66	0	66	66	1	0	0	0	0	0	0	0	0
SKW-N67	Low Level	55	63	55	63	63	0	0	0	0	0	0	0	0	0
	Mid level	55	63	55	63	63	0	0	0	0	0	0	0	0	0
	High Level	56	64	56	64	64	0	0	0	0	0	0	0	0	0
SKW-N68	Low Level	60	61	60	62	64	2	0	0	0	0	0	0	0	0
	Mid level	60	62	60	62	64	2	0	0	0	0	0	0	0	0
	High Level	60	62	60	62	64	2	0	0	0	0	0	0	0	0
SKW-N69	Low Level	60	56	60	59	63	6	0	0	0	0	0	0	0	0
	Mid level	60	60	60	60	63	6	0	0	0	0	0	0	0	0
	High Level	61	60	61	61	64	6	0	0	0	0	0	0	0	0
SKW-N70	Low Level	30	62	30	62	62	3	0	0	0	0	0	0	0	0
	Mid level	31	63	31	63	63	3	0	0	0	0	0	0	0	0
	High Level	32	64	32	64	64	3	0	0	0	0	0	0	0	0
SKW-N71 (Temple)	Low Level	55	63	55	63	64	0	1	0	0	0	0	0	0	0
	Mid level	55	63	55	63	64	0	0	0	0	0	0	0	0	0
	High Level	55	64	55	64	64	0	0	0	0	0	0	0	0	0
SKW-N72	Low Level	0	63	0	63	63	4	0	0	0	0	0	0	0	0
	Mid level	0	64	0	64	64	4	0	0	0	0	0	0	0	0
	High Level	0	65	0	65	65	4	0	0	0	0	0	0	0	0
SKW-N73	Low Level	0	58	0	58	58	4	0	0	0	0	0	0	0	0
	Mid level	0	61	0	61	61	4	0	0	0	0	0	0	0	0
	High Level	0	64	0	64	64	4	0	0	0	0	0	0	0	0
SKW-N74	Low Level	0	65	0	65	65	2	0	0	0	0	0	0	0	0
	Mid level	0	65	0	65	65	2	0	0	0	0	0	0	0	0
	High Level	0	66	0	66	66	2	0	0	0	0	0	0	0	0
SKW-N75	Low Level	52	66	52	66	66	0	0	0	0	0	0	0	0	0
	Mid level	53	66	53	66	66	0	0	0	0	0	0	0	0	0
	High Level	53	67	53	67	67	0	0	0	0	0	0	0	0	0
SKW-N76	Low Level	0	66	0	66	66	1	0	0	0	0	0	0	0	0
	Mid level	0	68	0	68	68	1	0	0	0	0	0	0	0	0
	High Level	0	69	0	69	69	1	0	0	0	0	0	0	0	0
SKW-N77	Low Level	44	66	44	66	66	0	0	0	0	0	0	0	0	0
	Mid level	45	67	45	67	67	0	0	0	0	0	0	0	0	0
	High Level	46	68	46	68	68	0	0	0	0	0	0	0	0	0
SKW-N78	Low Level	0	67	0	67	67	1	0	0	0	0	0	0	0	0
	Mid level	0	68	0	68	68	1	0	0	0	0	0	0	0	0
	High Level	0	69	0	69	69	1	0	0	0	0	0	0	0	0
SKW-N79	Low Level	0	67	0	67	67	2	0	0	0	0	0	0	0	0
	Mid level	0	68	0	68	68	2	0	0	0	0	0	0	0	0
	High Level	0	69	0	69	69	2	0	0	0	0	0	0	0	0
SKW-N80	Low Level	0	66	0	66	66	2	0	0	0	0	0	0	0	0
	Mid level	0	67	0	67	67	2	0	0	0	0	0	0	0	0
	High Level	0	68	0	68	68	2	0	0	0	0	0	0	0	0
SKW-N81	Low Level	0	66	0	66	66	2	0	0	0	0	0	0	0	0
	Mid level	0	67	0	67	67	2	0	0	0	0	0	0	0	0
	High Level	0	69	0	69	69	2	0	0	0	0	0	0	0	0
SKW-N82	Low Level	0	67	0	67	67	4	0	0	0	0	0	0	0	0
	Mid level	0	68	0	68	68	4	0	0	0	0	0	0	0	0
	High Level	0	68	0	68	68	4	0	0	0	0	0	0	0	0
SKW-N83	Low Level	41	66	41	66	66	0	0	0	0	0	0	0	0	0
	Mid level	43	67	43	67	67	0	0	0	0	0	0	0	0	0
	High Level	46	67	46	67	67	0	0	0	0	0	0	0	0	0
SKW-N84	Low Level	0	68	0	68	68	1	0	0	0	0	0	0	0	0
	Mid level	0	69	0	69	69	1	0	0	0	0	0	0	0	0
	High Level	0	70	0	70	70	1	0	0	0	0	0	0	0	0

Table D6 Predicted Traffic Noise Levels - L_A(Equivalent Contour), dB

NSR	Floor	Unmitigated		Mitigated		NSRs represented		Unmitigated Traffic Noise Impacts		Number of Noise Sensitive Receivers Exposed to Traffic Noise Impacts		Benefited by mitigation		Protected by mitigation		Comment regarding mitigated criteria exceedance		Residual Impacts	
		Existing	New	Existing	New	Total	Dwellings	Other	Dwellings	Other	Dwellings	Other	Dwellings	Other	Dwellings	Other	Dwellings	Other	Dwellings
SKW-N85	Low Level	44	66	44	66	66	0	0	0	0	0	0	0	0	0	0	-	0	0
	Mid level	46	66	46	66	66	0	0	0	0	0	0	0	0	0	0	-	0	0
	High Level	50	67	50	67	67	0	0	0	0	0	0	0	0	0	0	-	0	0
SKW-N86	Low Level	0	68	0	68	68	1	0	0	0	0	0	0	0	0	0	-	0	0
	Mid level	0	69	0	69	69	1	0	0	0	0	0	0	0	0	0	-	0	0
	High Level	0	69	0	69	69	1	0	0	0	0	0	0	0	0	0	-	0	0
SKW-N87	Low Level	50	65	50	65	65	0	0	0	0	0	0	0	0	0	0	-	0	0
	Mid level	51	65	51	65	66	0	0	0	0	0	0	0	0	0	0	-	0	0
	High Level	52	66	52	66	66	0	0	0	0	0	0	0	0	0	0	-	0	0
SKW-N88	Low Level	31	65	31	65	65	0	0	0	0	0	0	0	0	0	0	-	0	0
	Mid level	32	67	32	67	67	0	0	0	0	0	0	0	0	0	0	-	0	0
	High Level	32	67	32	67	67	0	0	0	0	0	0	0	0	0	0	-	0	0
SKW-N89	Low Level	0	68	0	68	68	1	0	0	0	0	0	0	0	0	0	-	0	0
	Mid level	0	69	0	69	69	1	0	0	0	0	0	0	0	0	0	-	0	0
	High Level	0	69	0	69	69	1	0	0	0	0	0	0	0	0	0	-	0	0
SKW-N90	Low Level	72	76	77	72	73	0	0	0	0	0	0	0	0	0	0	-	0	0
	Mid level	N/A	N/A	N/A	N/A	N/A	0	0	0	0	0	0	0	0	0	0	-	0	0
	High Level	N/A	N/A	N/A	N/A	N/A	0	0	0	0	0	0	0	0	0	0	-	0	0
SKW-N91	Low Level	72	78	88	72	73	1	0	0	0	0	0	0	0	0	0	-	0	0
	Mid level	N/A	N/A	N/A	N/A	N/A	0	0	0	0	0	0	0	0	0	0	-	0	0
	High Level	N/A	N/A	N/A	N/A	N/A	0	0	0	0	0	0	0	0	0	0	-	0	0
SKW-N92	Low Level	72	78	80	72	73	1	0	0	0	0	0	0	0	0	0	-	0	0
	Mid level	72	80	86	72	73	0	0	0	0	0	0	0	0	0	0	-	0	0
	High Level	N/A	N/A	N/A	N/A	N/A	0	0	0	0	0	0	0	0	0	0	-	0	0
SKW-N93	Low Level	61	77	77	61	63	0	0	0	0	0	0	0	0	0	0	-	0	0
	Mid level	66	77	77	66	70	0	0	0	0	0	0	0	0	0	0	-	0	0
	High Level	N/A	N/A	N/A	N/A	N/A	0	0	0	0	0	0	0	0	0	0	-	0	0
SKW-N94	Low Level	62	79	78	62	65	68	1	0	0	0	0	0	0	0	0	-	0	0
	Mid level	66	80	80	66	65	69	0	0	0	0	0	0	0	0	0	-	0	0
	High Level	N/A	N/A	N/A	N/A	N/A	0	0	0	0	0	0	0	0	0	0	-	0	0
SKW-N95	Low Level	63	77	77	63	64	67	1	0	0	0	0	0	0	0	0	-	0	0
	Mid level	N/A	N/A	N/A	N/A	N/A	0	0	0	0	0	0	0	0	0	0	-	0	0
	High Level	N/A	N/A	N/A	N/A	N/A	0	0	0	0	0	0	0	0	0	0	-	0	0
SKW-N96	Low Level	74	63	76	74	60	76	1	0	0	0	0	0	0	0	0	-	0	0
	Mid level	76	63	75	76	65	76	1	0	0	0	0	0	0	0	0	-	0	0
	High Level	76	63	75	76	61	76	1	0	0	0	0	0	0	0	0	-	0	0
SKW-N97	Low Level	81	63	82	81	60	81	1	0	0	0	0	0	0	0	0	-	0	0
	Mid level	82	63	82	82	61	82	1	0	0	0	0	0	0	0	0	-	0	0
	High Level	82	64	82	82	62	82	1	0	0	0	0	0	0	0	0	-	0	0
SKW-P101	Low Level	73	63	73	73	62	73	13	0	0	0	0	0	0	0	0	-	0	0
	Mid level	76	65	77	76	64	77	14	0	0	0	0	0	0	0	0	-	0	0
	High Level	78	68	78	78	66	79	13	0	0	0	0	0	0	0	0	-	0	0
SKW-P102	Low Level	73	63	73	73	62	73	13	0	0	0	0	0	0	0	0	-	0	0
	Mid level	77	65	77	77	64	77	14	0	0	0	0	0	0	0	0	-	0	0
	High Level	78	68	78	78	67	78	13	0	0	0	0	0	0	0	0	-	0	0
SKW-P103	Low Level	73	64	73	73	61	73	13	0	0	0	0	0	0	0	0	-	0	0
	Mid level	77	65	77	77	63	77	14	0	0	0	0	0	0	0	0	-	0	0
	High Level	78	68	78	78	66	79	13	0	0	0	0	0	0	0	0	-	0	0
SKW-P104	Low Level	70	63	71	70	60	70	13	0	0	0	0	0	0	0	0	-	0	0
	Mid level	73	64	74	73	61	73	14	0	0	0	0	0	0	0	0	-	0	0
	High Level	76	66	76	76	63	76	13	0	0	0	0	0	0	0	0	-	0	0
SKW-P105	Low Level	67	63	68	67	61	68	13	0	0	0	0	0	0	0	0	-	0	0
	Mid level	69	65	70	69	62	70	14	0	0	0	0	0	0	0	0	-	0	0
	High Level	72	67	73	72	64	73	13	0	0	0	0	0	0	0	0	-	0	0
SKW-P106	Low Level	67	60	67	67	55	67	13	0	0	0	0	0	0	0	0	-	0	0
	Mid level	69	62	70	69	56	70	14	0	0	0	0	0	0	0	0	-	0	0
	High Level	72	64	73	72	57	72	13	0	0	0	0	0	0	0	0	-	0	0
SKW-P107	Low Level	70	57	70	70	57	70	13	0	0	0	0	0	0	0	0	-	0	0
	Mid level	71	59	71	71	59	71	14	0	0	0	0	0	0	0	0	-	0	0
	High Level	71	61	72	71	61	72	13	0	0	0	0	0	0	0	0	-	0	0
SKW-P108	Low Level	70	58	70	70	58	70	13	0	0	0	0	0	0	0	0	-	0	0
	Mid level	70	59	71	70	59	71	14	0	0	0	0	0	0	0	0	-	0	0
	High Level	71	61	72	71	61	72	13	0	0	0	0	0	0	0	0	-	0	0
SKW-P109	Low Level	0	64	64	0	63	63	13	0	0	0	0	0	0	0	0	-	0	0
	Mid level	0	65	65	0	64	64	14	0	0	0	0	0	0	0	0	-	0	0
	High Level	0	66	66	0	65	65	13	0	0	0	0	0	0	0	0	-	0	0

Table D4 Predicted Traffic Noise Levels - L₁₀ Highway hours, dB

NSR	Floor	Unmitigated		Mitigated		NSRs represented		Unmitigated Traffic Noise Impacts		Benefited by mitigation		Protected by mitigation		Comment regarding mitigated criteria exceedance		Residual Impacts	
		Existing	New	Total	Existing	Total	Dwelling	Other	Dwellings	Other	Dwellings	Other	Dwellings	Other	Dwellings	Other	Dwellings
SKW-P110	Low Level	47	64	64	47	64	13	0	0	0	0	0	0	0	-	0	0
	Mid level	51	65	65	51	65	14	0	0	0	0	0	0	0	-	0	0
	High Level	61	67	68	61	68	13	0	0	0	0	0	0	0	-	0	0
SKW-P111	Low Level	0	64	64	0	63	13	0	0	0	0	0	0	0	-	0	0
	Mid level	0	65	65	0	64	14	0	0	0	0	0	0	0	-	0	0
	High Level	0	66	66	0	66	13	0	0	0	0	0	0	0	-	0	0
SKW-P112	Low Level	0	62	62	0	62	13	0	0	0	0	0	0	0	-	0	0
	Mid level	0	63	63	0	63	14	0	0	0	0	0	0	0	-	0	0
	High Level	0	64	64	0	64	13	0	0	0	0	0	0	0	-	0	0
SKW-P113	Low Level	0	60	60	0	60	13	0	0	0	0	0	0	0	-	0	0
	Mid level	0	61	61	0	61	14	0	0	0	0	0	0	0	-	0	0
	High Level	0	62	62	0	62	13	0	0	0	0	0	0	0	-	0	0
SKW-P114	Low Level	64	64	64	64	64	13	0	0	0	0	0	0	0	-	0	0
	Mid level	64	64	64	64	64	14	0	0	0	0	0	0	0	-	0	0
	High Level	65	65	65	65	65	13	0	0	0	0	0	0	0	-	0	0
SKW-P127	Low Level	76	77	76	76	76	117	0	117	0	0	0	0	0	NOT attributable to R10 Roads	0	0
	Mid level	81	79	81	81	81	118	0	118	0	0	0	0	0	NOT attributable to R10 Roads	0	0
	High Level	78	78	78	78	78	117	0	117	0	0	0	0	0	NOT attributable to R10 Roads	0	0
SKW-P128	Low Level	78	78	78	78	78	58	0	58	0	0	0	0	0	NOT attributable to R10 Roads	0	0
	Mid level	81	78	81	81	81	59	0	59	0	0	0	0	0	NOT attributable to R10 Roads	0	0
	High Level	79	78	79	78	79	59	0	59	0	0	0	0	0	NOT attributable to R10 Roads	0	0
SKW-P129	Low Level	84	84	84	84	84	58	0	58	0	0	0	0	0	NOT attributable to R10 Roads	0	0
	Mid level	81	77	83	81	83	59	0	59	0	0	0	0	0	NOT attributable to R10 Roads	0	0
	High Level	79	75	80	79	83	59	0	59	0	0	0	0	0	NOT attributable to R10 Roads	0	0
SKW-P130	Low Level	87	86	87	87	87	58	0	58	0	0	0	0	0	NOT attributable to R10 Roads	0	0
	Mid level	81	74	82	81	85	59	0	59	0	0	0	0	0	NOT attributable to R10 Roads	0	0
	High Level	78	74	80	78	85	59	0	59	0	0	0	0	0	NOT attributable to R10 Roads	0	0
SKW-P131	Low Level	78	63	76	78	78	58	0	58	0	0	0	0	0	NOT attributable to R10 Roads	0	0
	Mid level	78	70	78	78	85	58	0	58	0	0	0	0	0	NOT attributable to R10 Roads	0	0
	High Level	78	70	77	78	86	59	0	59	0	0	0	0	0	NOT attributable to R10 Roads	0	0
SKW-P132	Low Level	73	59	74	73	73	58	0	58	0	0	0	0	0	NOT attributable to R10 Roads	0	0
	Mid level	74	65	76	74	80	58	0	58	0	0	0	0	0	NOT attributable to R10 Roads	0	0
	High Level	74	66	76	74	82	58	0	58	0	0	0	0	0	NOT attributable to R10 Roads	0	0
SKW-P138	Low Level	80	61	81	80	81	58	0	58	0	0	0	0	0	NOT attributable to R10 Roads	0	0
	Mid level	79	63	79	79	82	59	0	59	0	0	0	0	0	NOT attributable to R10 Roads	0	0
	High Level	77	55	77	77	86	59	0	59	0	0	0	0	0	NOT attributable to R10 Roads	0	0
SKW-P139	Low Level	65	69	71	65	66	58	0	58	0	0	0	0	0	NOT attributable to R10 Roads	0	0
	Mid level	82	78	84	82	83	59	0	59	0	0	0	0	0	NOT attributable to R10 Roads	0	0
	High Level	79	78	82	79	82	59	0	59	0	0	0	0	0	NOT attributable to R10 Roads	0	0
SKW-P140	Low Level	74	71	76	74	74	58	0	58	0	0	0	0	0	NOT attributable to R10 Roads	0	0
	Mid level	81	78	83	81	82	59	0	59	0	0	0	0	0	NOT attributable to R10 Roads	0	0
	High Level	78	78	82	78	80	59	0	59	0	0	0	0	0	NOT attributable to R10 Roads	0	0
SKW-P141	Low Level	69	64	70	69	69	58	0	58	0	0	0	0	0	NOT attributable to R10 Roads	0	0
	Mid level	76	72	77	76	76	59	0	59	0	0	0	0	0	NOT attributable to R10 Roads	0	0
	High Level	75	72	77	75	77	59	0	59	0	0	0	0	0	NOT attributable to R10 Roads	0	0
SKW-P142	Low Level	73	65	73	73	73	58	0	58	0	0	0	0	0	NOT attributable to R10 Roads	0	0
	Mid level	73	60	74	73	73	58	0	58	0	0	0	0	0	NOT attributable to R10 Roads	0	0
	High Level	73	60	73	73	73	59	0	59	0	0	0	0	0	NOT attributable to R10 Roads	0	0
SKW-P143	Low Level	81	72	82	81	81	117	0	117	0	0	0	0	0	NOT attributable to R10 Roads	0	0
	Mid level	81	72	82	81	81	118	0	118	0	0	0	0	0	NOT attributable to R10 Roads	0	0
	High Level	78	71	80	78	80	117	0	117	0	0	0	0	0	NOT attributable to R10 Roads	0	0
SKW-P144	Low Level	78	60	82	78	73	117	0	117	0	0	0	0	0	Partly attributable to R10 Roads	117	0
	Mid level	81	77	83	81	82	118	0	118	0	0	0	0	0	Partly attributable to R10 Roads	118	0
	High Level	78	78	81	78	74	117	0	117	0	0	0	0	0	Partly attributable to R10 Roads	117	0
SKW-P145	Low Level	82	81	85	82	83	58	0	58	0	0	0	0	0	Partly attributable to R10 Roads	58	0
	Mid level	81	78	83	81	82	59	0	59	0	0	0	0	0	Partly attributable to R10 Roads	59	0
	High Level	79	75	81	79	74	59	0	59	0	0	0	0	0	Partly attributable to R10 Roads	59	0
SKW-P146	Low Level	74	71	76	74	74	58	0	58	0	0	0	0	0	NOT attributable to R10 Roads	0	0
	Mid level	76	73	77	76	76	58	0	58	0	0	0	0	0	NOT attributable to R10 Roads	0	0
	High Level	73	71	75	73	73	59	0	59	0	0	0	0	0	NOT attributable to R10 Roads	0	0
SKW-P147	Low Level	76	66	79	76	76	58	0	58	0	0	0	0	0	NOT attributable to R10 Roads	0	0
	Mid level	76	60	79	76	80	59	0	59	0	0	0	0	0	NOT attributable to R10 Roads	0	0
	High Level	77	60	78	77	80	59	0	59	0	0	0	0	0	NOT attributable to R10 Roads	0	0
SKW-P148	Low Level	80	66	80	80	80	117	0	117	0	0	0	0	0	NOT attributable to R10 Roads	0	0
	Mid level	80	66	80	80	80	118	0	118	0	0	0	0	0	NOT attributable to R10 Roads	0	0
	High Level	79	66	79	79	85	117	0	117	0	0	0	0	0	NOT attributable to R10 Roads	0	0

Table D6 Predicted Traffic Noise Levels - L₁₀ (Average) (dBA)

NSR	Floor	Unmitigated			Mitigated			NSRs represented			Unmitigated Traffic Noise Impacts			Number of Noise Sensitive Receivers Exposed to Traffic Noise Impacts			Beneficial by mitigation			Residual impacts		
		Existing		New	Existing		New	Dwellings		Other	Dwellings		Other	Dwellings		Other	Dwellings		Other	Dwellings		Other
		Total	74	67	74	61	74	58	0	0	58	0	0	0	0	0	0	0	0	0	0	0
SKW-P149	Low Level	74	67	74	61	74	58	0	0	58	0	0	0	0	0	0	0	0	0	0	0	0
	Mid level	76	70	77	76	67	76	59	0	0	59	0	0	0	0	0	0	0	0	0	0	0
	High Level	76	70	77	76	67	76	59	0	0	59	0	0	0	0	0	0	0	0	0	0	0
SKW-P153 (School)	Low Level	76	63	76	76	56	76	0	1	0	0	0	0	0	0	0	0	0	0	0	0	0
	Mid level	87	84	87	87	80	87	0	0	0	0	0	0	0	0	0	0	0	0	0	0	0
	High Level	88	88	87	84	82	88	0	0	0	0	0	0	0	0	0	0	0	0	0	0	0
SKW-P154 (School)	Low Level	77	63	77	77	58	77	0	1	0	0	0	0	0	0	0	0	0	0	0	0	0
	Mid level	87	86	87	87	82	87	0	0	0	0	0	0	0	0	0	0	0	0	0	0	0
	High Level	88	88	88	84	84	88	0	0	0	0	0	0	0	0	0	0	0	0	0	0	0
SKW-P155 (School)	Low Level	72	60	73	72	58	73	0	1	0	0	0	0	0	0	0	0	0	0	0	0	0
	Mid level	74	62	74	74	60	74	0	0	0	0	0	0	0	0	0	0	0	0	0	0	0
	High Level	76	65	76	76	61	76	0	0	0	0	0	0	0	0	0	0	0	0	0	0	0
SKW-P156 (School)	Low Level	72	62	72	72	58	72	0	1	0	0	0	0	0	0	0	0	0	0	0	0	0
	Mid level	73	63	73	73	59	73	0	0	0	0	0	0	0	0	0	0	0	0	0	0	0
	High Level	73	64	74	73	61	74	0	0	0	0	0	0	0	0	0	0	0	0	0	0	0
SKW-P157 (School)	Low Level	69	55	69	68	53	69	0	1	0	0	0	0	0	0	0	0	0	0	0	0	0
	Mid level	68	56	68	68	54	68	0	0	0	0	0	0	0	0	0	0	0	0	0	0	0
	High Level	69	58	69	69	56	69	0	0	0	0	0	0	0	0	0	0	0	0	0	0	0
SKW-P158 (School)	Low Level	72	62	72	72	57	72	0	1	0	0	0	0	0	0	0	0	0	0	0	0	0
	Mid level	73	63	74	73	59	74	0	0	0	0	0	0	0	0	0	0	0	0	0	0	0
	High Level	74	65	75	74	60	75	0	0	0	0	0	0	0	0	0	0	0	0	0	0	0
SKW-P201	Low Level	38	32	39	38	33	39	23	0	0	0	0	0	0	0	0	0	0	0	0	0	0
	Mid level	37	32	38	37	33	39	24	0	0	0	0	0	0	0	0	0	0	0	0	0	0
	High Level	48	43	49	48	45	50	23	0	0	0	0	0	0	0	0	0	0	0	0	0	0
SKW-P202	Low Level	69	55	69	69	59	69	23	0	0	0	0	0	0	0	0	0	0	0	0	0	0
	Mid level	68	59	69	68	61	69	24	0	0	0	0	0	0	0	0	0	0	0	0	0	0
	High Level	68	59	68	68	61	69	23	0	0	0	0	0	0	0	0	0	0	0	0	0	0
SKW-P203	Low Level	62	43	62	62	44	62	23	0	0	0	0	0	0	0	0	0	0	0	0	0	0
	Mid level	61	50	62	61	50	62	24	0	0	0	0	0	0	0	0	0	0	0	0	0	0
	High Level	61	54	61	61	55	62	23	0	0	0	0	0	0	0	0	0	0	0	0	0	0
SKW-P204	Low Level	68	56	69	68	58	69	23	0	0	0	0	0	0	0	0	0	0	0	0	0	0
	Mid level	68	59	68	68	61	69	24	0	0	0	0	0	0	0	0	0	0	0	0	0	0
	High Level	69	61	69	69	63	70	23	0	0	0	0	0	0	0	0	0	0	0	0	0	0
SKW-P205	Low Level	63	47	63	63	48	63	23	0	0	0	0	0	0	0	0	0	0	0	0	0	0
	Mid level	65	55	66	65	56	66	24	0	0	0	0	0	0	0	0	0	0	0	0	0	0
	High Level	64	58	65	64	59	65	23	0	0	0	0	0	0	0	0	0	0	0	0	0	0
SKW-P206	Low Level	76	57	76	76	60	76	23	0	0	0	0	0	0	0	0	0	0	0	0	0	0
	Mid level	74	62	74	74	64	74	24	0	0	0	0	0	0	0	0	0	0	0	0	0	0
	High Level	73	61	73	73	63	74	23	0	0	0	0	0	0	0	0	0	0	0	0	0	0
SKW-P207	Low Level	67	52	67	67	56	67	0	0	0	0	0	0	0	0	0	0	0	0	0	0	0
	Mid level	67	58	67	67	60	68	0	0	0	0	0	0	0	0	0	0	0	0	0	0	0
	High Level	66	58	67	66	60	67	0	0	0	0	0	0	0	0	0	0	0	0	0	0	0
SKW-P208	Low Level	76	62	76	76	65	77	11	0	0	0	0	0	0	0	0	0	0	0	0	0	0
	Mid level	76	67	76	76	69	77	12	0	0	0	0	0	0	0	0	0	0	0	0	0	0
	High Level	76	66	76	75	68	76	12	0	0	0	0	0	0	0	0	0	0	0	0	0	0
SKW-P209	Low Level	76	62	76	76	65	77	11	0	0	0	0	0	0	0	0	0	0	0	0	0	0
	Mid level	76	67	76	76	69	77	12	0	0	0	0	0	0	0	0	0	0	0	0	0	0
	High Level	76	67	76	75	68	76	12	0	0	0	0	0	0	0	0	0	0	0	0	0	0
SKW-P212	Low Level	62	52	62	62	58	63	28	0	0	0	0	0	0	0	0	0	0	0	0	0	0
	Mid level	64	57	65	64	59	65	27	0	0	0	0	0	0	0	0	0	0	0	0	0	0
	High Level	65	59	67	65	61	67	27	0	0	0	0	0	0	0	0	0	0	0	0	0	0
SKW-P213	Low Level	68	55	68	68	58	68	28	0	0	0	0	0	0	0	0	0	0	0	0	0	0
	Mid level	68	60	69	68	62	69	27	0	0	0	0	0	0	0	0	0	0	0	0	0	0
	High Level	68	60	68	68	62	69	27	0	0	0	0	0	0	0	0	0	0	0	0	0	0
SKW-P214	Low Level	68	55	68	68	58	68	13	0	0	0	0	0	0	0	0	0	0	0	0	0	0
	Mid level	69	60	69	68	62	70	14	0	0	0	0	0	0	0	0	0	0	0	0	0	0
	High Level	68	60	69	68	62	69	13	0	0	0	0	0	0	0	0	0	0	0	0	0	0
SKW-P215	Low Level	70	48	70	70	50	70	13	0	0	0	0	0	0	0	0	0	0	0	0	0	0
	Mid level	70	51	70	70	54	70	14	0	0	0	0	0	0	0	0	0	0	0	0	0	0
	High Level	70	53	70	70	54	70	13	0	0	0	0	0	0	0	0	0	0	0	0	0	0
SKW-P216	Low Level	69	0	69	69	0	69	40	0	0	0	0	0	0	0	0	0	0	0	0	0	0
	Mid level	69	0	69	70	0	70	40	0	0	0	0	0	0	0	0	0	0	0	0	0	0
	High Level	76	63	77	76	56	76	29	0	0	0	0	0	0	0	0	0	0	0	0	0	0
SKW-P301	Low Level	76	67	76	76	61	76	29	0	0	0	0	0	0	0	0	0	0	0	0	0	0
	Mid level	76	69	76	75	64	76	28	0	0	0	0	0	0	0	0	0	0	0	0	0	0
	High Level	76	69	76	75	64	76	29	0	0	0	0	0	0	0	0	0	0	0	0	0	0

Table D6 Predicted Traffic Noise Levels - L₁₀ (Average Road), dB

NSR	Floor	Unmitigated			Mitigated			NSRs represented		Unmitigated Traffic Noise Impacts		Number of Noise Sensitive Receivers Exposed to Traffic Noise Impacts		Benefited by mitigation		Protected by mitigation		Comment regarding mitigated criteria exceedance		Residual Impacts	
		Existing	New	Total	Existing	New	Total	Dwellings	Other	Dwellings	Other	Dwellings	Other	Dwellings	Other	Dwellings	Other	Dwellings	Other	Dwellings	Other
SKW-P302	Low Level	73	64	74	73	58	73	29	0	29	0	0	0	0	0	0	0	0	0	0	0
	Mid level	73	67	74	73	61	73	29	0	29	0	0	0	0	0	0	0	0	0	0	0
	High Level	74	69	76	74	64	74	29	0	29	0	0	0	0	0	0	0	0	0	0	0
SKW-P303	Low Level	71	64	72	71	50	71	29	0	29	0	0	0	0	0	0	0	0	0	0	0
	Mid level	73	67	74	73	61	73	29	0	29	0	0	0	0	0	0	0	0	0	0	0
	High Level	74	69	76	74	64	74	29	0	29	0	0	0	0	0	0	0	0	0	0	0
SKW-P304	Low Level	71	63	71	71	59	71	29	0	29	0	0	0	0	0	0	0	0	0	0	0
	Mid level	72	67	73	72	62	73	29	0	29	0	0	0	0	0	0	0	0	0	0	0
	High Level	74	69	76	74	64	74	29	0	29	0	0	0	0	0	0	0	0	0	0	0
SKW-P305	Low Level	71	63	71	71	59	71	29	0	29	0	0	0	0	0	0	0	0	0	0	0
	Mid level	72	66	73	72	61	73	29	0	29	0	0	0	0	0	0	0	0	0	0	0
	High Level	74	68	76	74	63	74	29	0	29	0	0	0	0	0	0	0	0	0	0	0
SKW-P306	Low Level	71	62	71	71	58	71	29	0	29	0	0	0	0	0	0	0	0	0	0	0
	Mid level	72	65	73	72	61	72	29	0	29	0	0	0	0	0	0	0	0	0	0	0
	High Level	73	66	74	73	63	73	29	0	29	0	0	0	0	0	0	0	0	0	0	0
SKW-P307	Low Level	71	61	71	71	58	71	29	0	29	0	0	0	0	0	0	0	0	0	0	0
	Mid level	72	64	72	72	60	72	29	0	29	0	0	0	0	0	0	0	0	0	0	0
	High Level	73	67	74	73	63	73	29	0	29	0	0	0	0	0	0	0	0	0	0	0
Sub-total							6174	11	4833	11	17	1435	4	76	148	0	1	0	0	529	0
Overall Total							7795	17	5677	17	1	2081	8	148	1	0	0	0	0	785	0

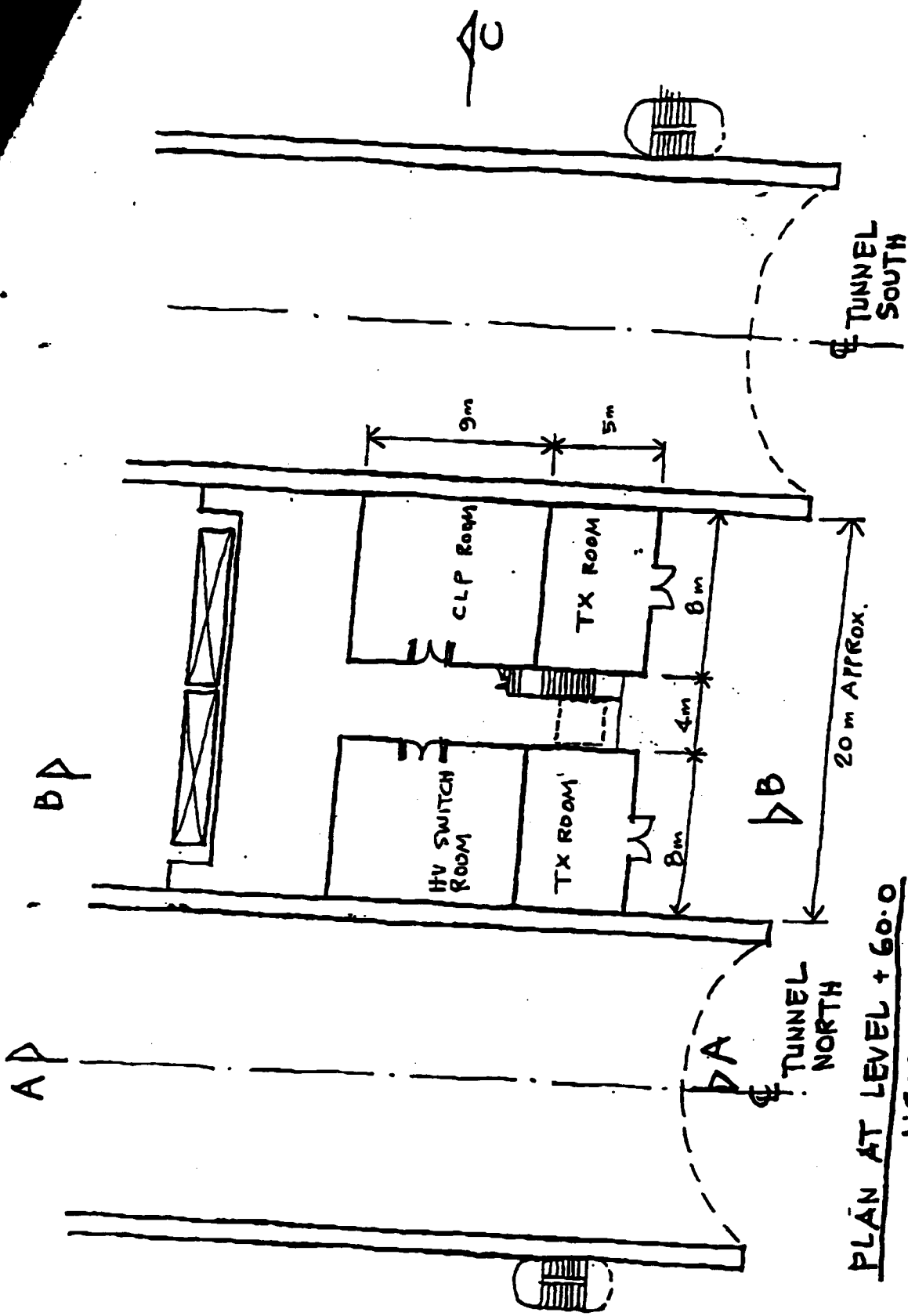
Notes:
 (1) TMEIA criteria exceedances are indicated in bold type face. The criteria adopted are: 70 dB(A) for residential dwellings, 65 dB(A) for schools and places of worship and 55 dB(A) for medical facilities and homes for the aged.
 (2) Dwellings represented is the number of individual dwellings represented by each noise prediction point.
 (3) Other NSRs represented is the number of NSRs other than residential dwellings represented and includes schools, places of worship, medical facilities and homes for the aged.
 (4) NSRs protected are those which are protected from TMEIA criteria exceedances as a result of the proposed mitigation.
 (5) NSRs benefited are those which will experience a reduction of at least 1 dB(A) as a result of the proposed mitigation.
 (6) Residual impacts is the number of NSRs which will be exposed to criteria exceedances which are at least partially attributable to Route 10 Roads.

Table D7 Predicted Noise Levels Eligible for Noise Insulation Works (NIW) under Route 10 Scheme

NSR	Assessment Level	No. of Dwellings or other NSRs	Prevailing	2022 "Total"	2022 "Existing"	2022 "New"	Total > HKPSG	Total ≥ prevailing+1	Total ≥ existing+1	Eligible for insulation
<i>Tsing Lung Tau Section</i>										
TLT-N1A	Low	14	62	71	70	66	Yes	Yes	Yes	Yes
	Mid	15	65	74	72	69	Yes	Yes	Yes	Yes
	High	15	66	75	73	71	Yes	Yes	Yes	Yes
TLT-N1B	Low	14	63	72	71	66	Yes	Yes	Yes	Yes
	Mid	15	65	74	73	68	Yes	Yes	Yes	Yes
	High	15	66	75	73	71	Yes	Yes	Yes	Yes
TLT-N1C	Low	14	64	72	71	66	Yes	Yes	Yes	Yes
	Mid	15	66	74	73	68	Yes	Yes	Yes	Yes
	High	15	66	75	73	70	Yes	Yes	Yes	Yes
TLT-N1D	Low	14	64	72	71	66	Yes	Yes	Yes	Yes
	Mid	15	65	74	73	68	Yes	Yes	Yes	Yes
	High	15	65	74	72	70	Yes	Yes	Yes	Yes
TLT-N1E	Mid	15	71	74	73	68	Yes	Yes	Yes	Yes
	High	15	69	74	72	70	Yes	Yes	Yes	Yes
TLT-N1F	Mid	15	70	72	71	67	Yes	Yes	Yes	Yes
	High	15	69	72	70	69	Yes	Yes	Yes	Yes
TLT-N1H	Mid	10	70	73	72	67	Yes	Yes	Yes	Yes
	High	10	71	75	73	69	Yes	Yes	Yes	Yes

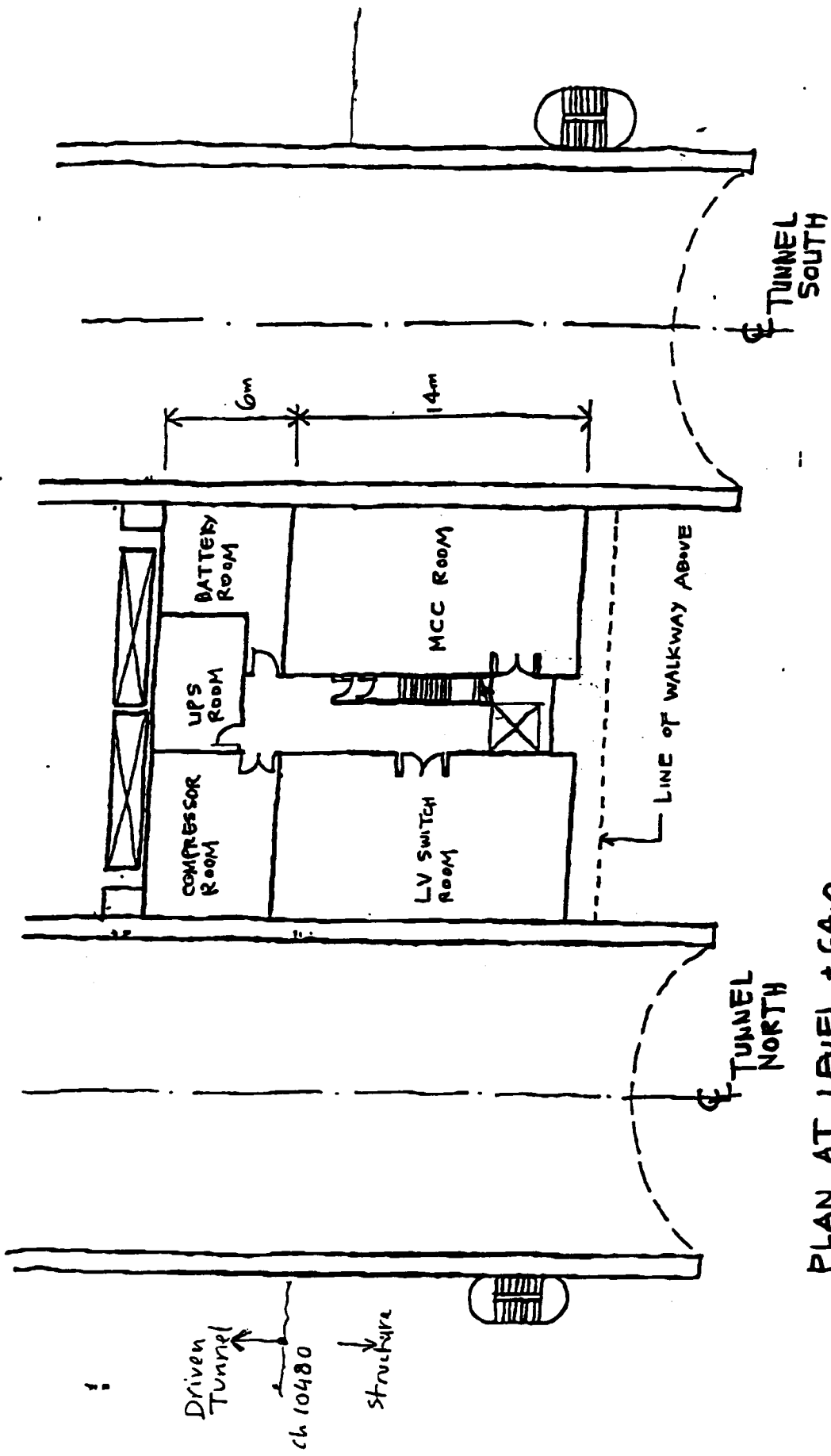
Preliminary Layout for Tunnel Portal Ventilation Buildings

ARMAM HONG KONG LTD
Route 10
Tung Lung Tau Vear/
Postal Building
am 4/2/19



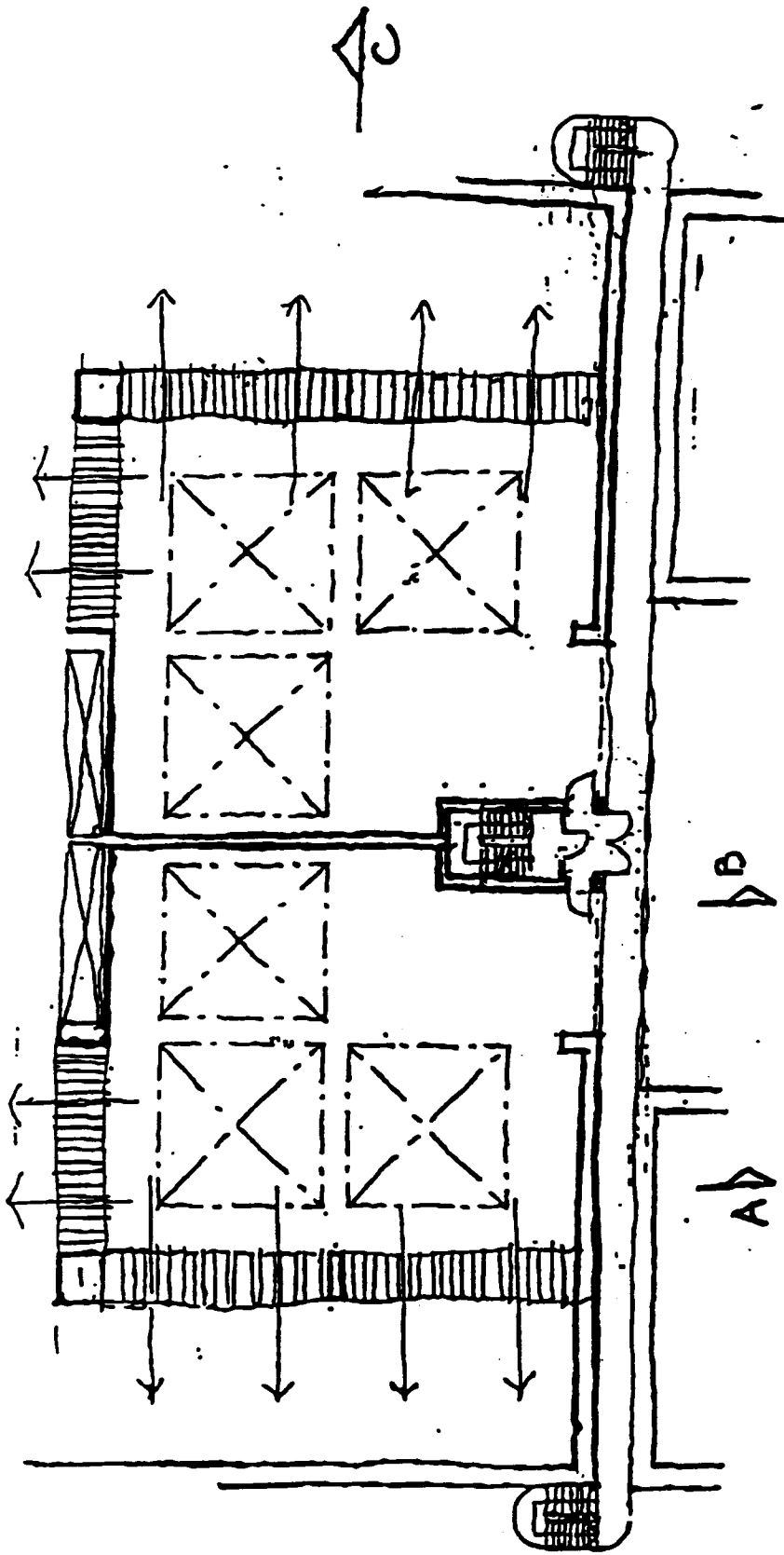
PLAN AT LEVEL + 60.0
1:200

RAM HONG KONG LTD
Site Route to Ting Lung Tau Vent/ Potable Building
Date: 4/7/99 scale: 1:200



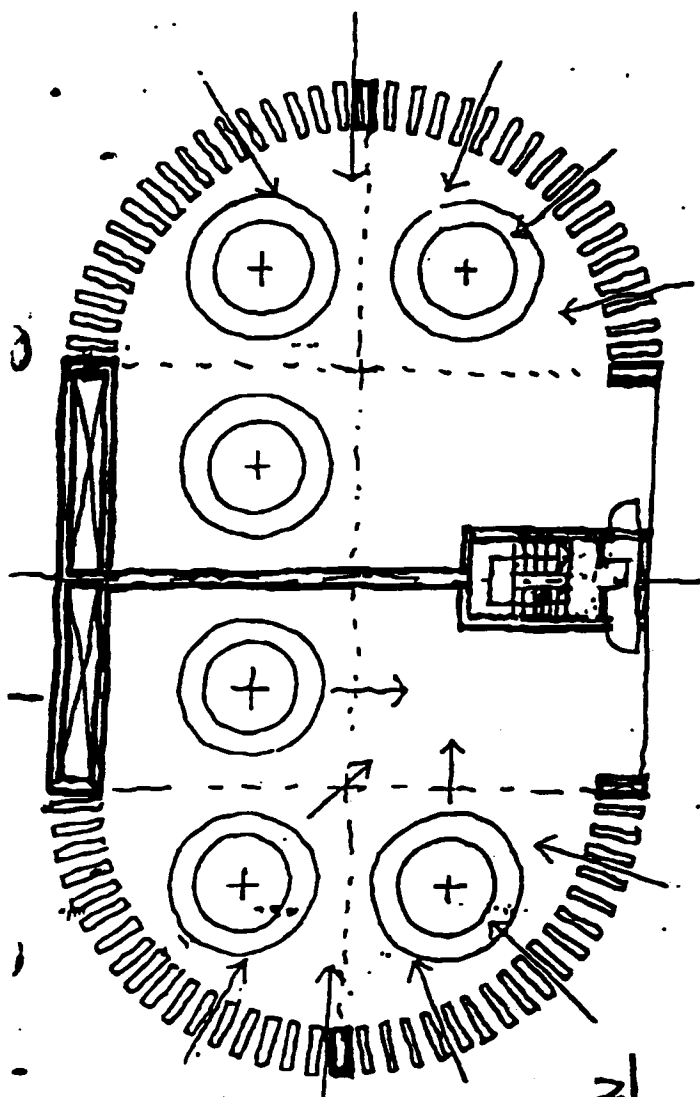
PLAN AT LEVEL + 64.0
 1:200

MUM HONG KONG LTD
THE PROJECT IS
TING LUNG TAO VENT/
POSTAL BUILDING
DATE: 4/3/14 SCALE: 1:200

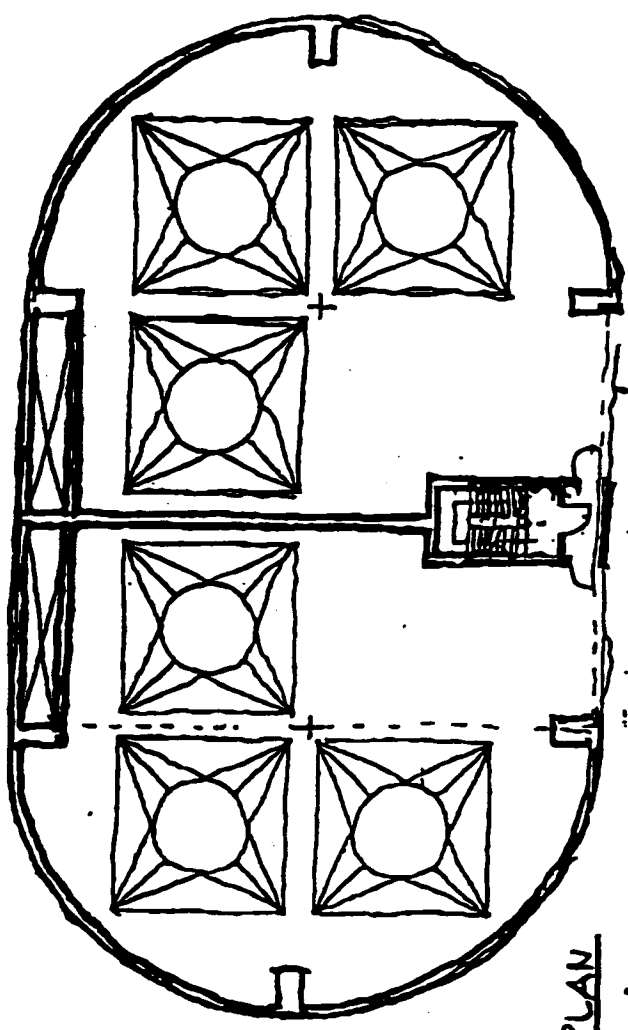


PLENUM FLOOR PLAN 1:200
(LEVEL +68.0)

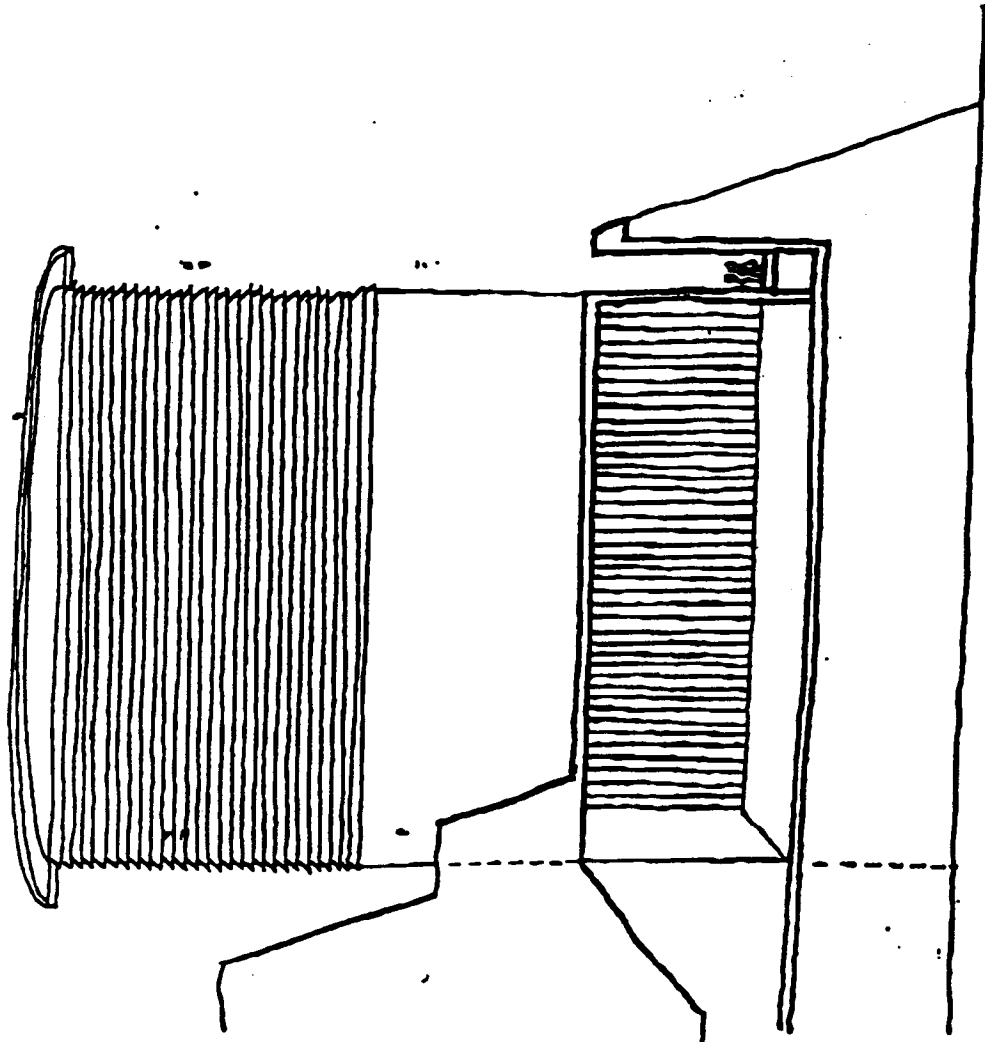
MINI HONG KONG LTD
This House is Ting Lung Tan Vent/ Porth Building
DATE 14/2/99
SCALE 1:200
NO. 1360 SK-04



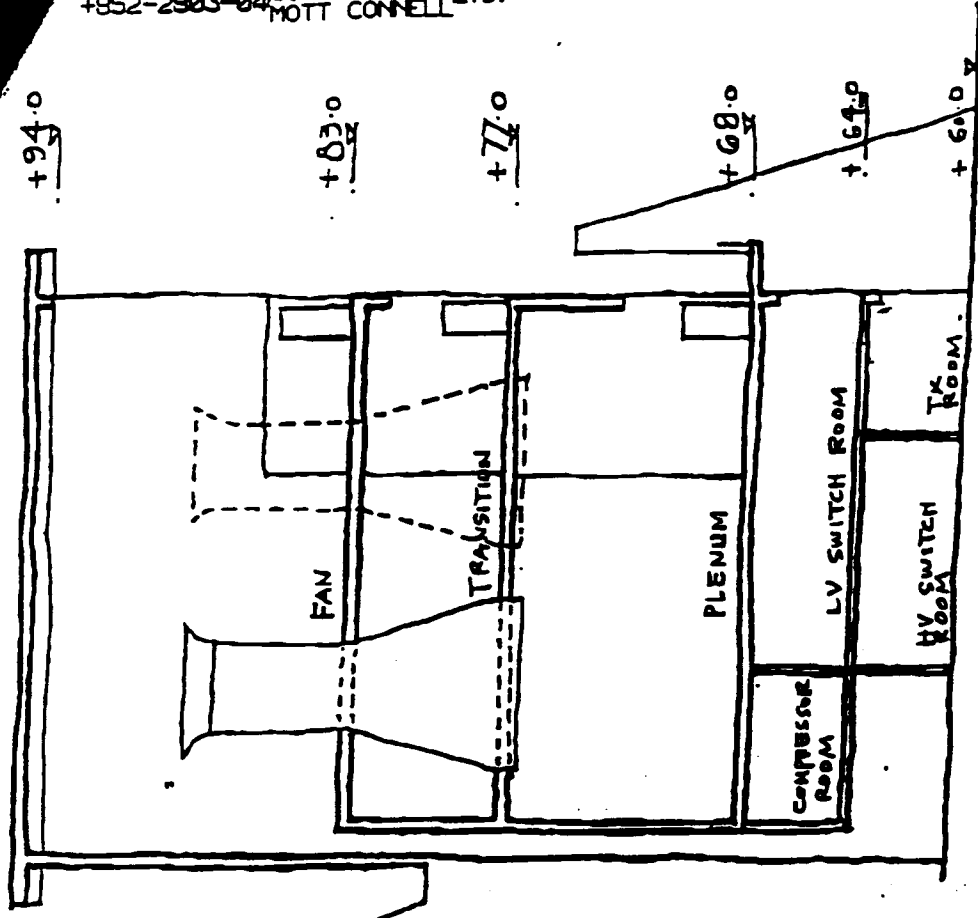
FAN ROOM PLAN
(LEVEL +83.0)
1:100



TRANSITION FLOOR PLAN
(LEVEL +77.0)
A-B



SECTION A-A



SECTION B-B

MNUM HONG KONG LTD
The Practice
Ting Lung Tan Vaux
Peter Bai Wing
DATE: 1/3/15

Tsing Lung Tau Ventilation Building (TLT)

NSR	Distance	Direction	Criteria	SPL @ distance from source, dB(A)			Screening			Contribution, dB(A)			Total dB(A)
				South	West	East	South	West	East	South	West	East	
TLT-N2	250	S	55	48.3	48.9	47.9	0	-5	-5	48.3	43.9	42.9	50.5
TLT-N5	325	SW	50	46.1	46.6	45.6	0	0	-5	46.1	46.6	40.6	49.9
TLT-N1	260	E	50	48.0	48.6	47.6	-5	-5	0	43.0	43.6	47.6	50.0

Ventilation Building Facade	South	West	East
Louvre Area, m ²	280	330	330
Conformal area (1m)	425.9	487.3	487.3
SWL, dB(A)	101.3	101.9	100.9
LAeq(30 mins) @ 1m, dB(A)	75	75	74

Tai Lam Chung Tunnel Ventilation Building (TLC)

NSR	Distance	Direction	Criteria	SPL @ distance from source, dB(A)			Screening			Contribution, dB(A)			Total dB(A)
				North	South	West	North	South	West	North	South	West	
TLC-N2	200	NW	50	45.9	45.9	45.3	0	-5	0	45.9	40.9	45.3	49.3
TLC-N3	200	SW	50	45.9	45.9	45.3	-5	0	0	40.9	45.9	45.3	49.3

Ventilation Building Facade	North	South	West
Louvre Area, m ²	330	330	280
Conformal area (1m)	487.3	487.3	425.9
SWL, dB(A)	96.9	96.9	96.3
LAeq(30 mins) @ 1m, dB(A)	70	70	70

Note: Direction refers to the location of the NSR in relation to the tunnel ventilation building

Table D08 - Sample CRTN calculation for SL-N11A mitigated option

Mitigated																				
NSR																				
SL-N11A																				
Segment No	1	2	3	4	5	6	7	8	9	9a	10	11	12	13	13a	14	15	16	17	18
Hourly Flow (veh/hr)	2210	2210	2210	2210	2130	2130	2130	2130	4450	4450	4450	4450	4450	4450	4660	4660	4660	4660	4660	4600
Av Speed (km/hr)	85	85	85	85	85	85	85	85	80	80	80	80	80	80	80	80	80	80	80	50
%HGV	59	59	59	59	59	59	59	59	64	64	64	64	64	64	57	57	57	57	57	49
Gradient %	2.88	11.4	3.7	1.85	2	3.6	1.6	3.15	2	0	6.3	2.1	1.5	2.1	2.1	0	5.5	1.58	4.2	5
Surface Type (improvised/perVIOUS)	P	P	P	P	P	P	P	P	P	P	P	P	P	P	P	P	P	P	P	P
Receiver-Carriageway Distance (m)	15	23	20	6	23	30	27	13	116	116	110	89	60	133	133	138	108	80	166	94
Height of Carriageway	51	47	45	45	50	49	48	46	17	17	16	14.7	13.7	16.5	16.5	16	14.7	13.7	11	14.5
Angle of View (deg)	11	89	32	2	14	75	34	4	26	15	11	6	3.5	28	15	10	6	3.5	52	2
Barrier (V/N)	Y	Y	Y	Y	Y	Y	Y	Y	Y	Y	Y	Y	Y	Y	Y	Y	Y	Y	Y	Y
Height of Barrier	54	50	48	48	53	52	51	49	25	20	25	25	25	20	20	25	25	25	16	0/4
Barrier-Carriageway Distance	3	3	3	3	15	12	15	15	110	6	102	82	56	125	25	118	102	75	25	0/4
Receiver Height (m)	26.5	26.5	26.5	26.5	26.5	26.5	26.5	26.5	26.5	26.5	26.5	26.5	26.5	26.5	26.5	26.5	26.5	26.5	26.5	26.5
OUTPUTS																				
Basic Hourly Noise Level dB(A)	84.1	84.1	84.6	84.0	84.5	86.8	86.2	86.7	86.6	86.6	86.6	86.6	86.6	86.6	86.6	86.6	86.6	86.6	86.5	85.0
(Includes speed and %HGV correction, also gradient and road surface correction of 1 for concrete and speed <75km/hr)	-3.5	-3.5	-3.5	-3.5	-3.5	-3.5	-3.5	-3.5	-3.5	-3.5	-3.5	-3.5	-3.5	-3.5	-3.5	-3.5	-3.5	-3.5	-3.5	-1
Surface Correction																				
Distance Correction:																				
Sight Distance (m)	31.1	33.8	30.2	21.2	35.8	40.6	37.8	23.9	119.9	119.9	113.9	93.2	64.7	136.8	136.8	131.9	112.1	84.4	170.2	98.2
Distance Correction dB(A)	-3.6	-4.0	-3.5	-2.0	-4.2	-4.8	-4.4	-2.8	-9.5	-9.5	-8.4	-8.4	-6.8	-10.1	-10.1	-9.9	-9.2	-8.0	-11.0	-8.6
Calculation of Path Difference:																				
Possible Path Difference	5.9	4.0	4.2	7.4	10.6	7.6	8.3	15.3	0.1	0.2	0.0	0.0	0.1	0.1	0.1	0.0	0.1	0.1	0.1	0.0
Working out whether receiver is in the illuminated or shadow zone:																				
Source Receiver Gradient	-1.4	-0.8	-0.8	-2.0	-0.9	-0.7	-0.7	-1.2	0.1	0.1	0.1	0.1	0.1	0.1	0.1	0.1	0.1	0.1	0.1	0.0
Height of Line at Barrier Position	42.7	42.3	40.2	32.5	33.7	36.8	35.2	24.1	26.0	18.2	23.8	23.6	23.7	25.9	25.9	23.7	23.9	25.9	25.8	14.0
Illuminated / Shadow?	S	S	S	S	S	S	S	S	S	S	S	S	S	S	S	S	S	S	S	S
Calculation of Barrier Attenuation:																				
Barrier Attenuation (Illuminated)	0	0	0	0	0	0	0	0	-1.2	0.0	-2.0	-2.3	-1.5	-1.6	-1.6	-2.4	-1.5	-1.5	-1.6	0
Barrier Attenuation (Shadow)	-23.8	-21.6	-21.0	-25.2	-27.6	-25.4	-26.0	-30.1	0.0	-10.5	0.0	0.0	0.0	-7.2	-7.2	-7.2	-7.4	-7.4	-7.2	-9.0
Possible Barrier Attenuation	-21.0	-21.0	-21.0	-21.0	-21.0	-21.0	-21.0	-21.0	-1.2	-10.5	-2.0	-2.3	-1.5	-1.6	-1.6	-2.4	-1.5	-1.5	-1.6	-9.0
Correction:																				
View Angle Correction dB(A)	-12.1	-3.1	-7.5	-19.5	-11.1	-3.8	-7.2	-16.5	-8.4	-10.8	-12.1	-15.8	-17.1	-17.1	-8.1	-10.4	-12.6	-14.8	-17.1	-5.1
Final correction	2.5	2.5	2.5	2.5	2.5	2.5	2.5	2.5	2.5	2.5	2.5	2.5	2.5	2.5	2.5	2.5	2.5	2.5	2.5	2.5
Reflection from Opposite Structure																				
Angle of View	11	89	32	2	14	75	34	4	26	15	11	6	3.5	28	15	10	6	3.5	52	2
Reflection Correction, dB(A)	0.1	0.7	0.3	0.0	0.1	0.6	0.3	0.0	0.0	0.0	0.0	0.0	0.0	0.0	0.0	0.0	0.0	0.0	0.0	0.0
Hourly L10, dB(A)	46.4	58.3	51.6	40.3	46.9	54.6	50.6	43.1	60.8	55.0	61.8	61.7	60.2	65.9	65.9	60.2	61.2	61.2	58.8	61.1
Total New Noise Level, dB(A)																				
Total Existing Noise Level, dB(A)																				
Total Overall Noise Level, dB(A)																				
* Barrier attenuation has been limited to -21 dB(A)																				

SL-N11A		1	2	3	4	5	6	7	8	9	9a	10	11	12	13	13a	14	15	16	17	18
Segment No	(SLLR-N)	(SLLR-N)	(SLLR-N)	(SLLR-N)	(SLLR-S)	(SLLR-S)	(SLLR-S)	(SLLR-S)	(SLLR-S)	(TMR-E)	(TMR-E)	(TMR-E)	(TMR-E)	(TMR-E)	(TMR-E)	(TMR-W)	(TMR-W)	(TMR-W)	(TMR-W)	(TMR-W)	(CPR)
1	2210	2210	2210	2210	2130	2130	2130	2130	2130	4450	4450	4450	4450	4450	4450	4660	4660	4660	4660	4660	4600
2	85	85	85	85	85	85	85	85	85	80	80	80	80	80	80	80	80	80	80	80	50
3	59	59	59	59	59	59	59	59	59	64	64	64	64	64	64	57	57	57	57	57	49
4	11.4	11.4	11.4	11.4	3.7	3.7	3.7	3.7	3.15	2	2	2	2	2	2	2.1	2.1	2.1	2.1	2.1	4.2
5	P	P	P	P	P	P	P	P	P	P	P	P	P	P	P	P	P	P	P	P	1
6	23	23	23	23	30	30	30	30	13	116	116	110	89	60	133	133	128	108	80	166	94
7	47	47	45	45	49	49	48	48	46	17	17	16	14.7	13.7	16.5	16.5	16	14.7	13.7	11	14.5
8	89	89	89	89	14	14	14	14	4	26	15	11	6	3.3	28	15	10	6	3.3	52	2
9	Y	Y	Y	Y	Y	Y	Y	Y	Y	Y	Y	Y	Y	Y	Y	Y	Y	Y	Y	Y	n
10	48	48	46	46	50	50	49	49	47	35	20	25	25	25	35	20	35	25	25	16	n/a
11	3	3	3	3	15	15	15	15	15	110	6	102	82	56	125	25	118	102	75	25	n/a
12	26.5	26.5	26.5	26.5	26.5	26.5	26.5	26.5	26.5	26.5	26.5	26.5	26.5	26.5	26.5	26.5	26.5	26.5	26.5	26.5	26.5
SQUIPTS																					
Basic Hourly Noise Level dB(A)																					
(Includes speed and %HV correction, also gradient and road surface correction of 1 for concrete and speed <75km/hr)																					
Surface correction																					
Surface correction																					
Distance Correction:																					
Slope Distance (m)																					
Distance Correction dB(A)																					
Calculation of Path Difference:																					
Possible Path Difference																					
Working out whether receiver is in the illuminated or shadow zone:																					
Source Receiver Gradient																					
Height of Line at Barrier Position																					
Illuminated / Shadow?																					
Calculation of Barrier Attenuation:																					
Barrier Area Illuminated																					
Barrier Area Shadow																					
Possible Barrier Attenuation *																					
Angle of View and Facade																					
Corrections:																					
View Angle Correction dB(A)																					
Facade correction																					
Reflection from Opposite Structure																					
Angle in View																					
Reflection Correction, dB(A)																					
Hourly L10 dB(A)																					
Total New Noise Level, dB(A)																					
Total Existing Noise Level, dB(A)																					
Total Overall Noise Level, dB(A)																					
* Barrier attenuation has been limited to -21 dB(A)																					