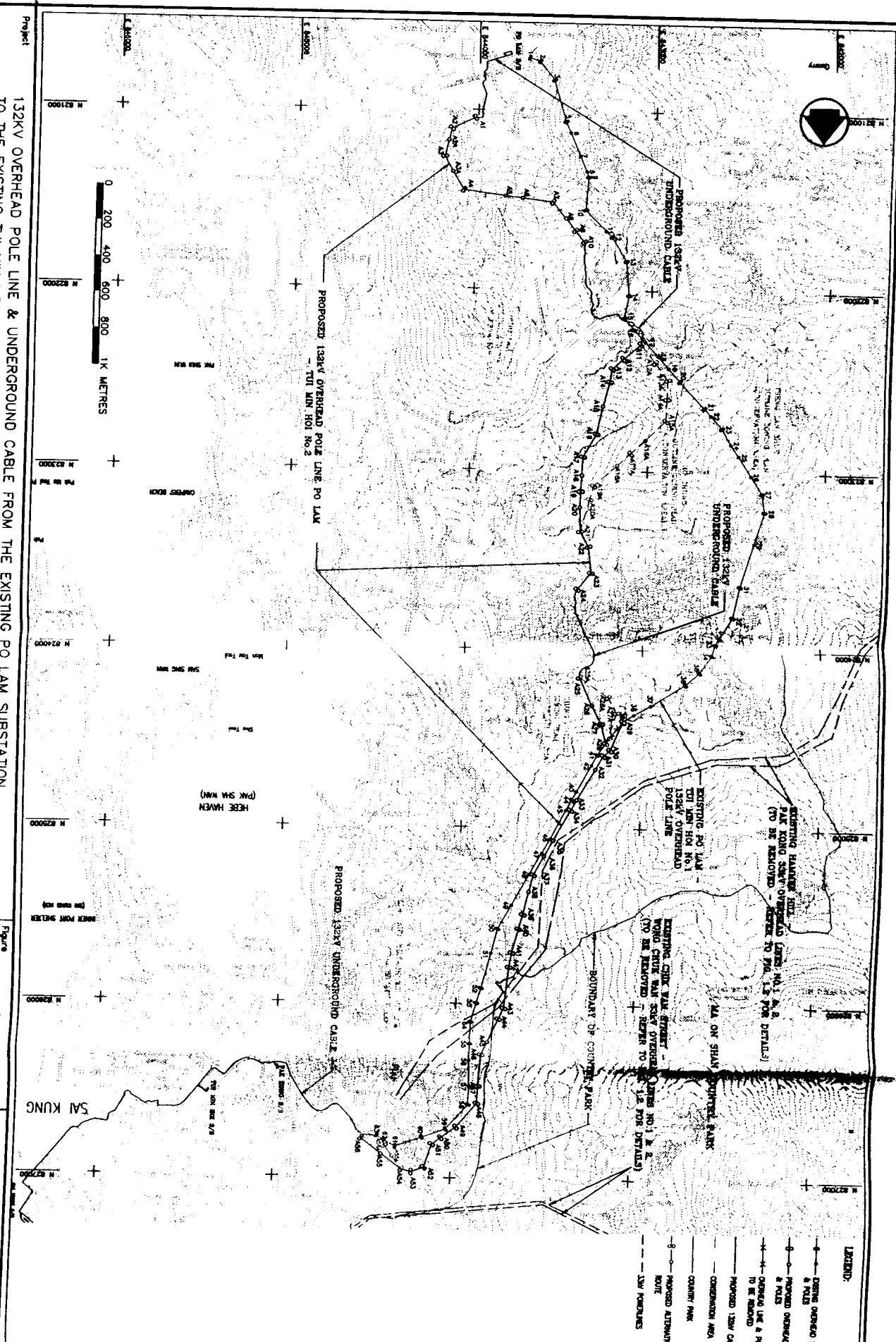


FIGURES



Project: 132KV OVERHEAD POLE LINE & UNDERGROUND CABLE FROM THE EXISTING PO LAM SUBSTATION TO THE EXISTING TUI MIN HOI SUBSTATION - CIRCUIT NO. 2

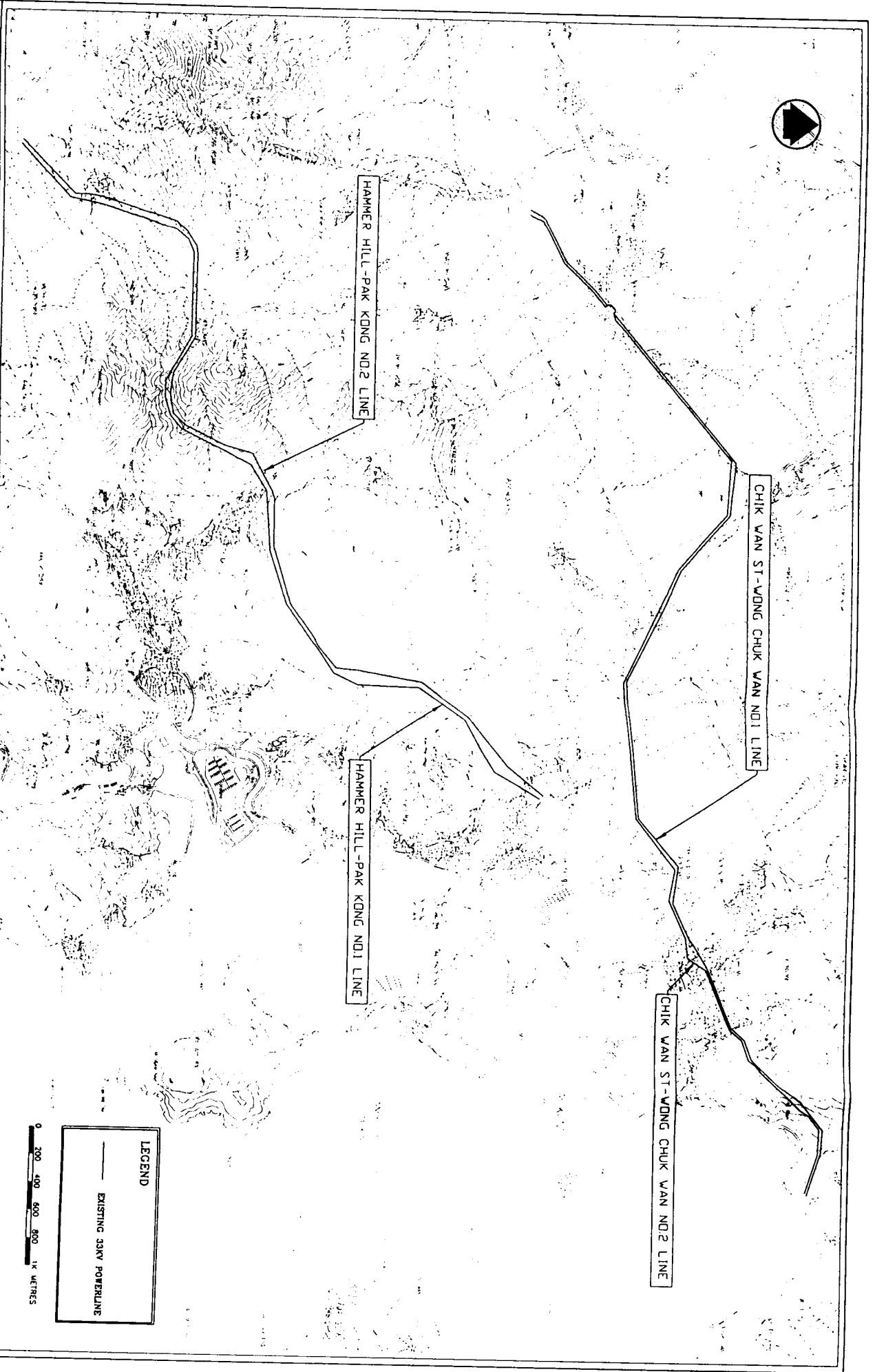
Title: LOCATION PLAN OF THE PROPOSED OVERHEAD POLE LINE & UNDERGROUND CABLE

Figure 1.1

Scale AS SHOWN

Date OCT 1999

Maunsell
MAUNSELL ENVIRONMENTAL
MANAGEMENT CONSULTANTS LTD



LEGEND

— EXISTING 33KV POWERLINE



Project
132KV OVERHEAD POLE LINE & UNDERGROUND CABLE FROM THE EXISTING PO LAM SUBSTATION
TO THE EXISTING TUI MIN HOI SUBSTATION - CIRCUIT NO 2

AS SHOWN

Figure 1.2

Scale AS SHOWN

DATE MAY 1999

Maunsell
MAUNSELL ENVIRONMENTAL
MANAGEMENT CONSULTANTS LTD

**PROPOSED 132KV OVERHEAD POLE LINE AND UNDERGROUND CABLE
FROM EXISTING PO LAM S/S TO EXISTING TUI MIN HOI S/S NO.2**

ID	Task Name	M1	M2	M3	M4	M5	M6	M7	M8	M9	M10	M11	M12	M13	M14	M15	M16	M17	M18	M19	M20	M21	M22
1	OHL construction																						
2	Underground cable construction																						

Project: 16-340
Date: Jul 9 '99

Task

Figure 2.1 Tentative Construction Programme



Figure 2.2 The Proposed Single Pole and H-Pole Supports

PROPOSED 132kV UNDERGROUND CABLE

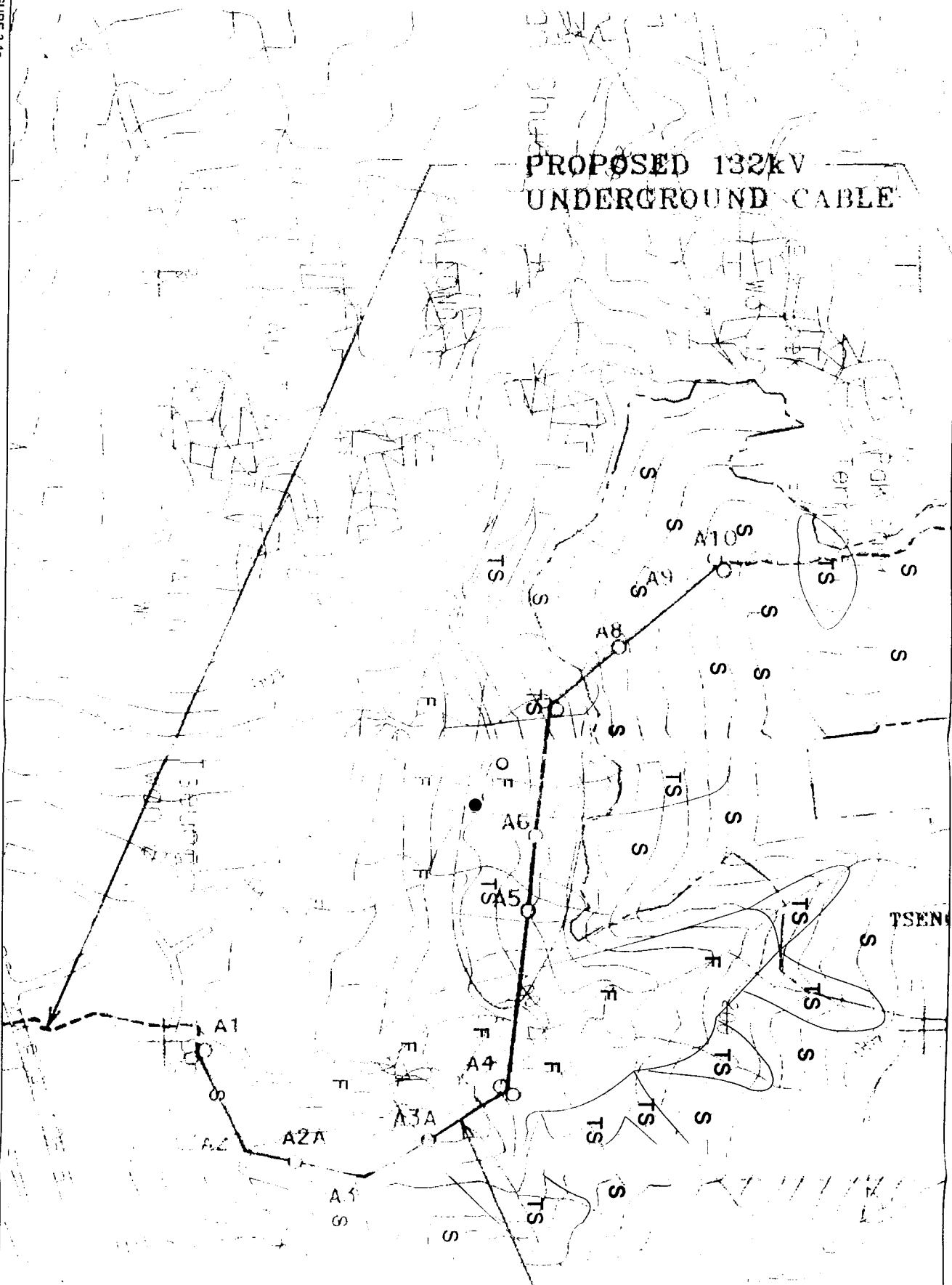


FIGURE 3.1a

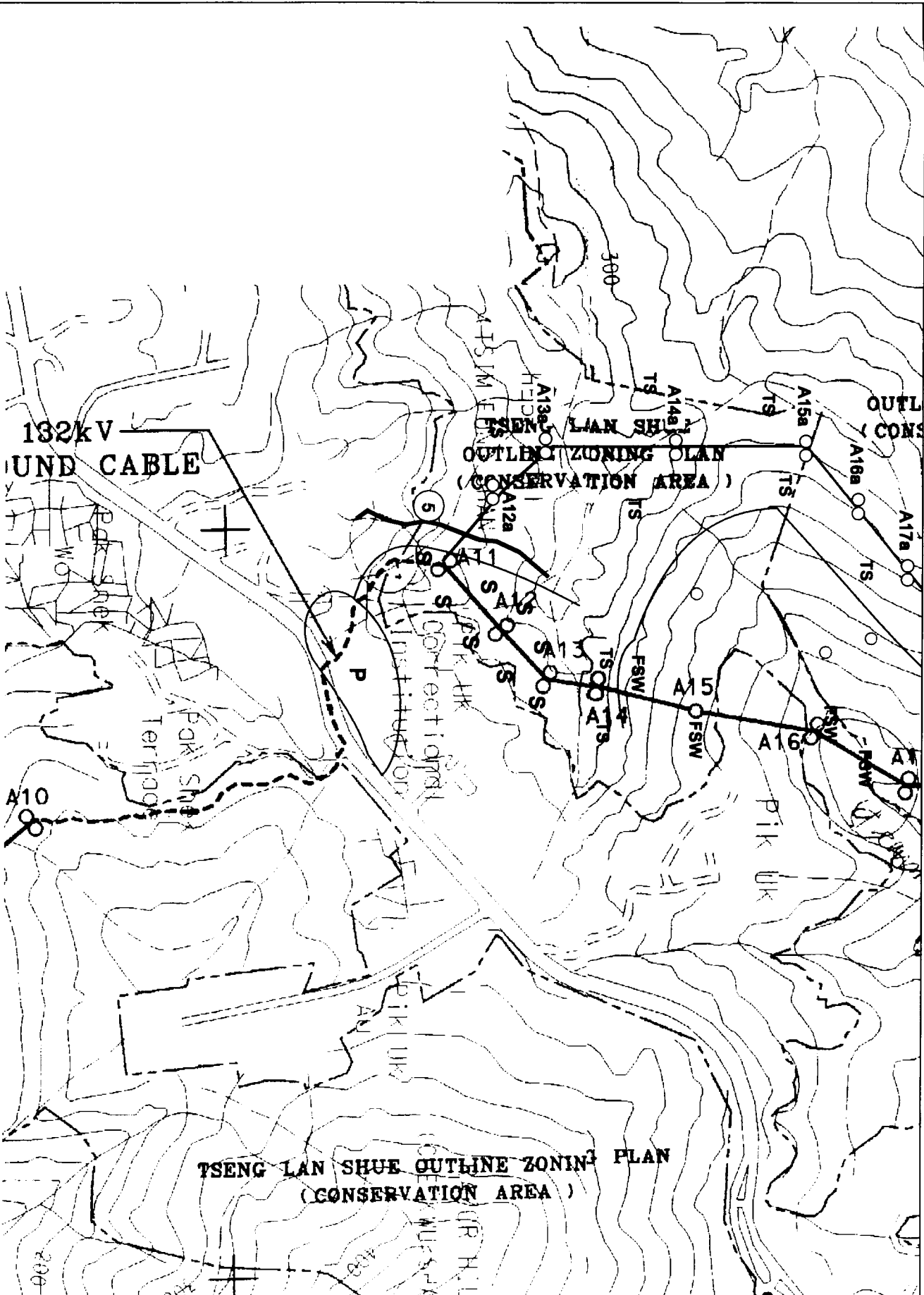
HABITAT MAP FOR POWERLINE ALIGNMENT (A1-A10)

SCALE 1:5000

- KEY**
- S = SHRUBLAND
 - TS = TALL SHRUBLAND
 - P = PLANTATION
 - F = SECONDARY FOREST
 - G = GRASSLAND
 - FSW = FENG SHUI WOOD
 - ORCH = ORCHARD
 - GARD = GARDEN
 - W = WASTELAND
 - = STREAM
 - = ALTERNATIVE ALIGNMENT
 - ⊕ = BURROW OF SMALL INDIAN CIVET
 - = FACES OF CIVET

Environmental
Resources
Management





KEY

- S = SHRUBLAND
- TS = TALL SHRUBLAND
- P = PLANTATION
- F = SECONDARY FOREST
- G = GRASSLAND
- FSW = FENG SHUI WOOD
- ORCH = ORCHARD
- WV = WASTELAND

— STREAM SURVEYED

— ALTERNATIVE ALIGNMENT

○ HOLES MADE BY WILD BOAR

SCALE 1:5000

HABITAT MAP FOR POWERLINE ALIGNMENT (A10-A19)

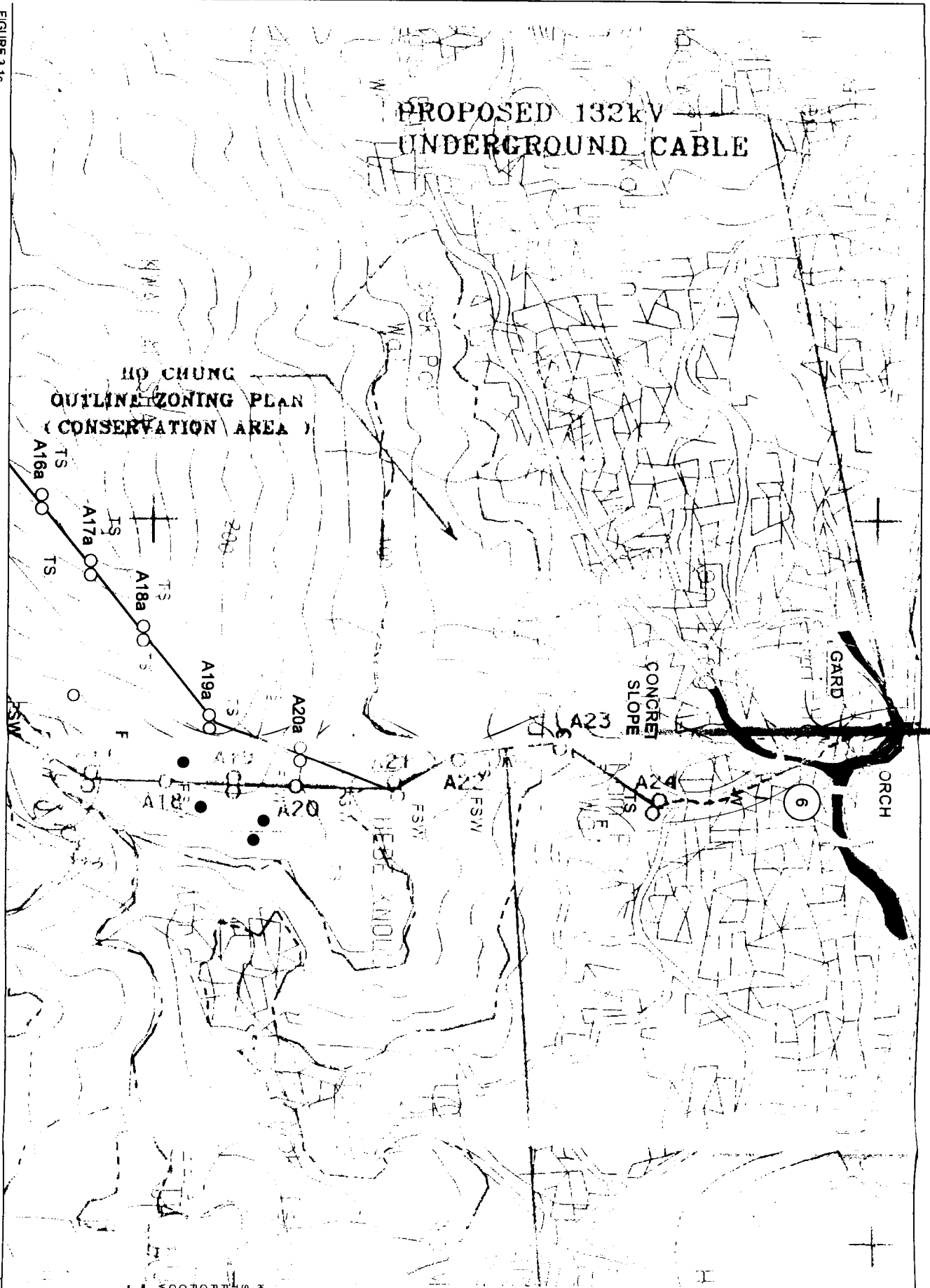
FIGURE 3.1b

M.E. CHENG
DATE: 08/08/08

PROPOSED 132kV UNDERGROUND CABLE

HO CHUNG
OUTLINING ZONING PLAN
(CONSERVATION AREA)

HABITAT MAP FOR POWERLINE ALIGNMENT (A17 - A24)



- KEY
- S = SHRUBLAND
 - TS = TALL SHRUBLAND
 - P = PLANTATION
 - F = SECONDARY FOREST
 - G = GRASSLAND
 - FSW = FENG SHUI WOOD
 - ORCH = ORCHARD
 - GARD = GARDEN
 - W = WASTELAND
- STREAM
 - ALTERNATIVE ALIGNMENT
 - HOLES MADE BY WILD BOAR
 - RODENT BURROW

SCALE 1:5000

FIGURE 3.1c

FILE C:\1803
DATE 09/04/98

EXISTING PO LAM
TUI MIN HOI No.1
132kV OVERHEAD
POLE LINE (PART LENGT

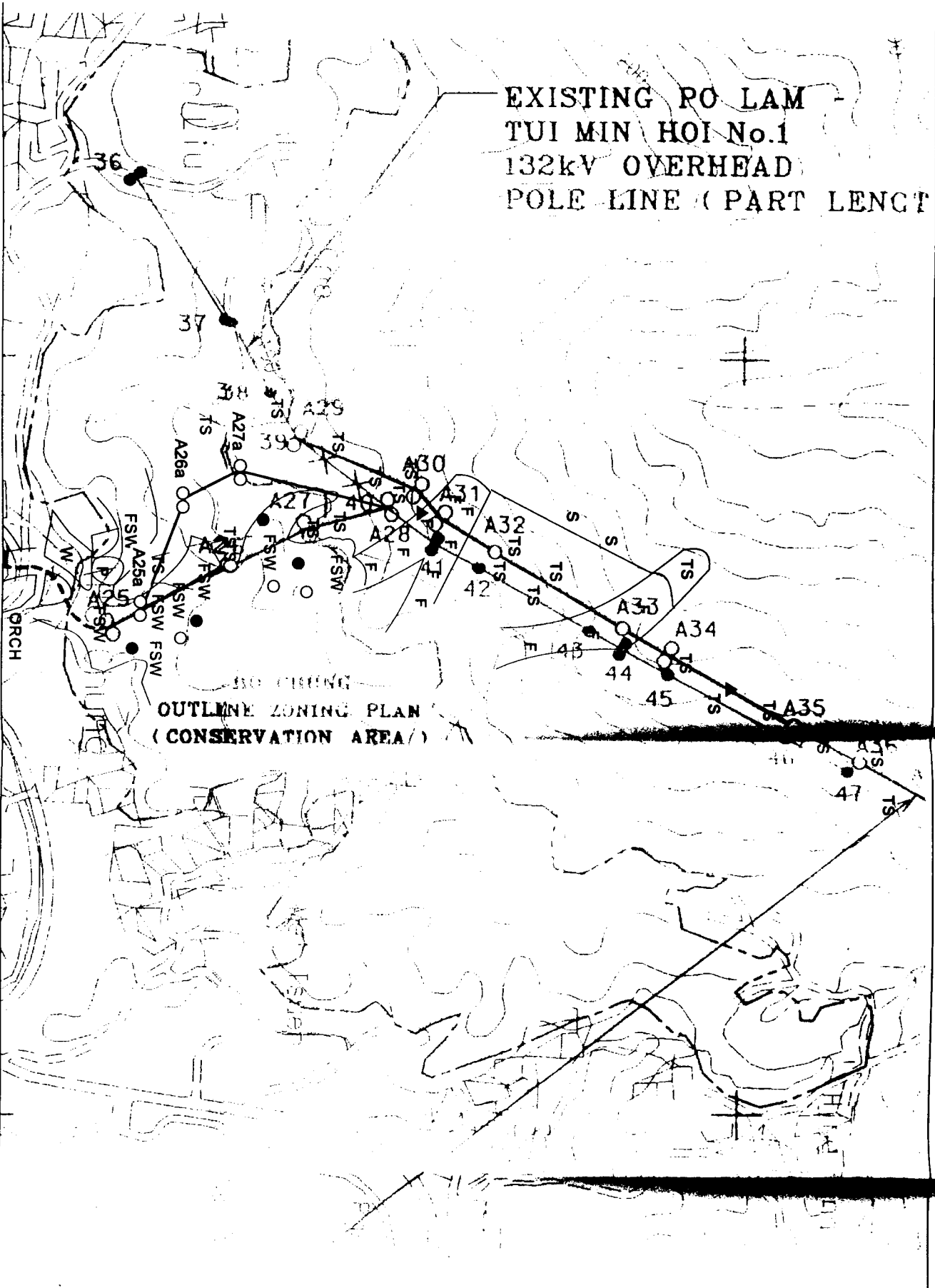
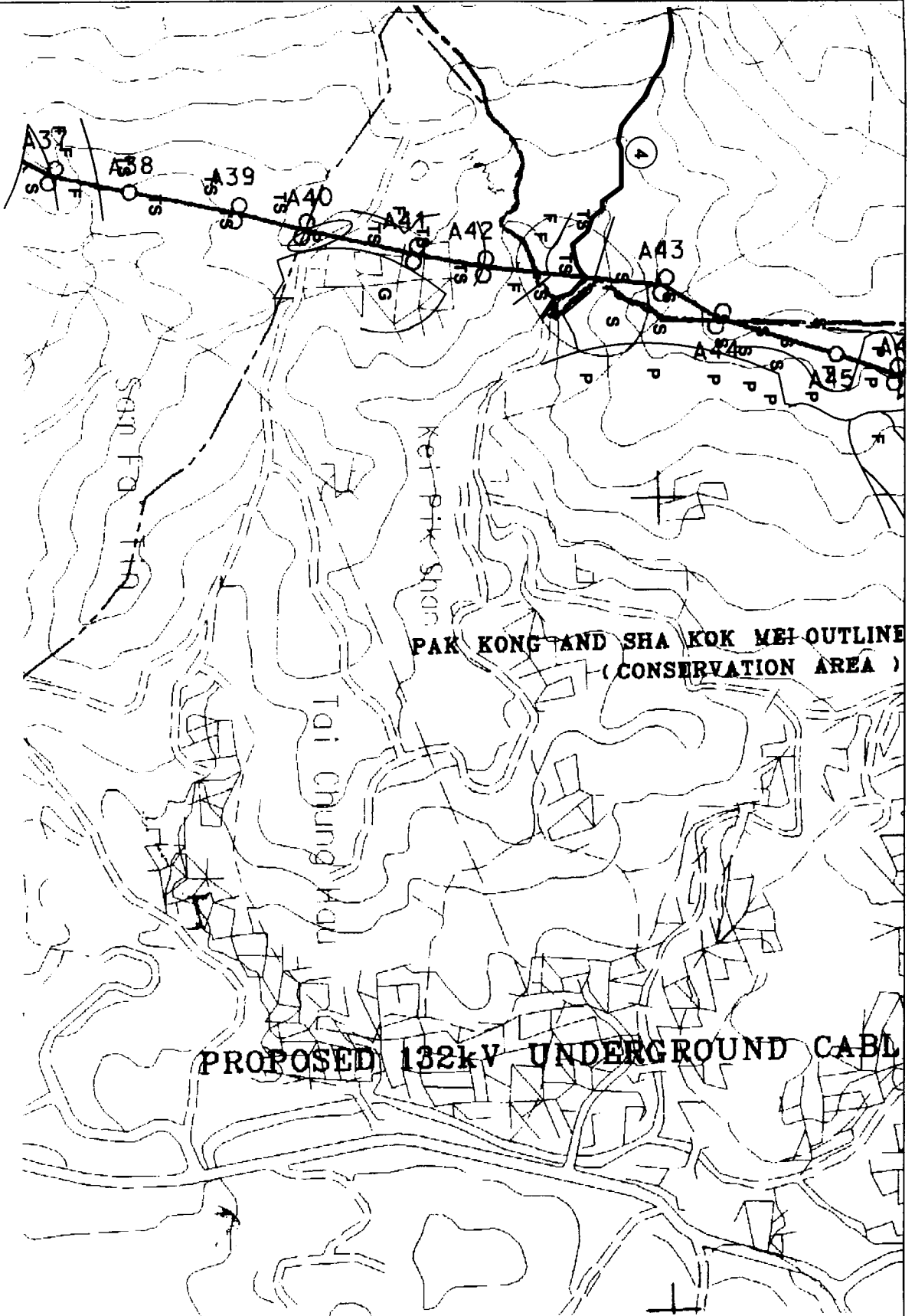


FIGURE 3.1d

HABITAT MAP FOR POWERLINE ALIGNMENT (A25 -A36)

OUTLINE ZONING PLAN
(CONSERVATION AREA)

- KEY
- S = SHRUBLAND
 - TS = TALL SHRUBLAND
 - P = PLANTATION
 - F = SECONDARY FOREST
 - G = GRASSLAND
 - FSW = FENG SHUI WOOD
 - ORCH = ORCHARD
 - GARDEN
 - W = WASTELAND
 - STREAM
 - ALTERNATIVE ALIGNMENT
 - HOLES MADE BY WILD BOAR
 - RODENT BURROW
 - ▲ *Alouatta leucon*
 - ▲ *Xylocopa longipalpus*
- SCALE 1:5000



PAK KONG AND SHA KOK MEI OUTLINE
(CONSERVATION AREA)

PROPOSED 132kV UNDERGROUND CABLE

- KEY
- S = SHRUBLAND
 - TS = TALL SHRUBLAND
 - P = PRAIRIE
 - F = SECONDARY FOREST
 - G = GRASSLAND
 - FSW = FRINGE SHUI WOOD
 - ORCH = ORCHARD
 - GARD = GARDEN
 - W = WASTELAND
 - = STREAM SURVEYED
 - - - = ALTERNATIVE ALIGNMENT

SCALE 1:5000

FIGURE 3.16

HABITAT MAP FOR POWERLINE ALIGNMENT (A37 -A45)

FILE CROSS
DATE 2000

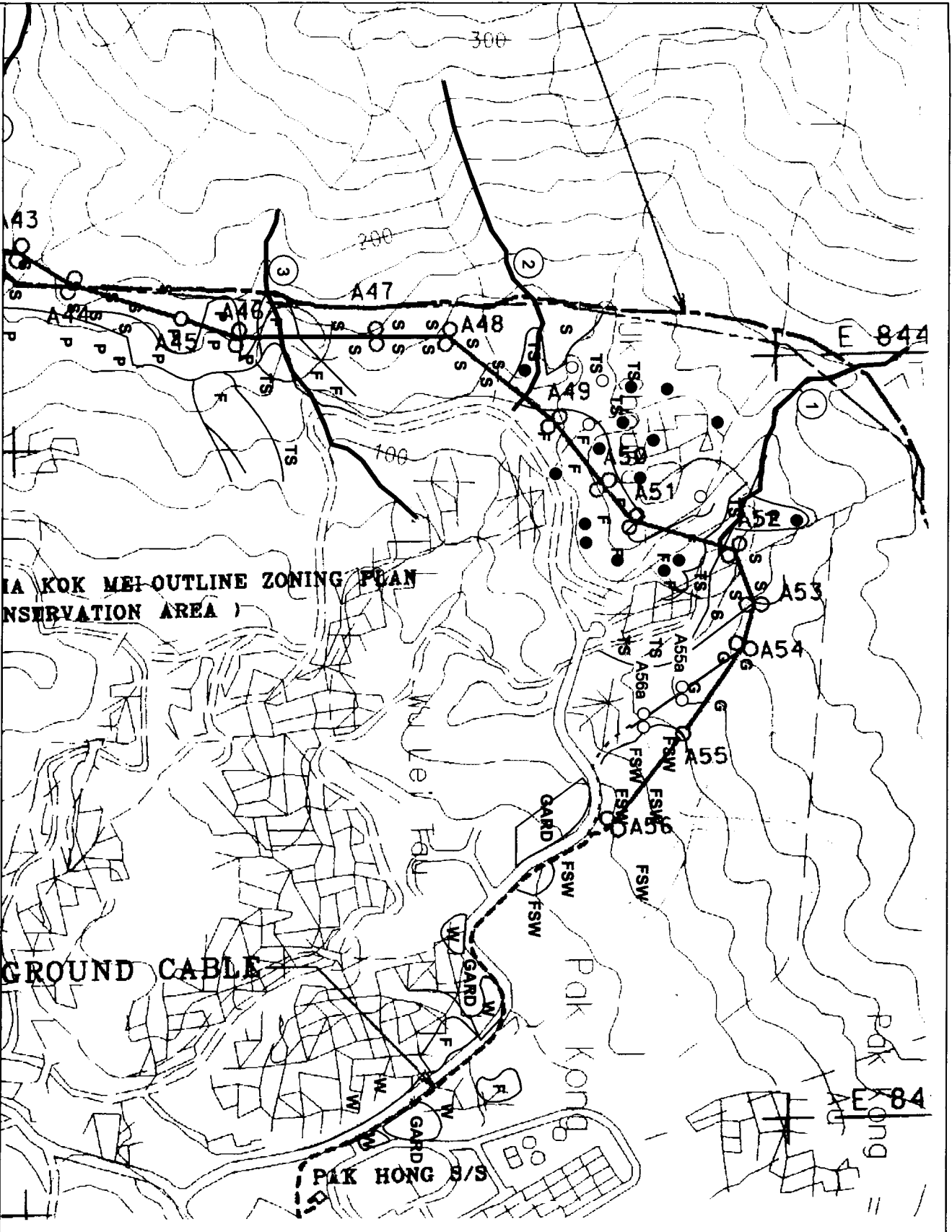


FIGURE 3.11

HABITAT MAP FOR POWERLINE ALIGNMENT (A44-A56)

MA KOK MEI-OUTLINE ZONING PLAN
(CONSERVATION AREA)

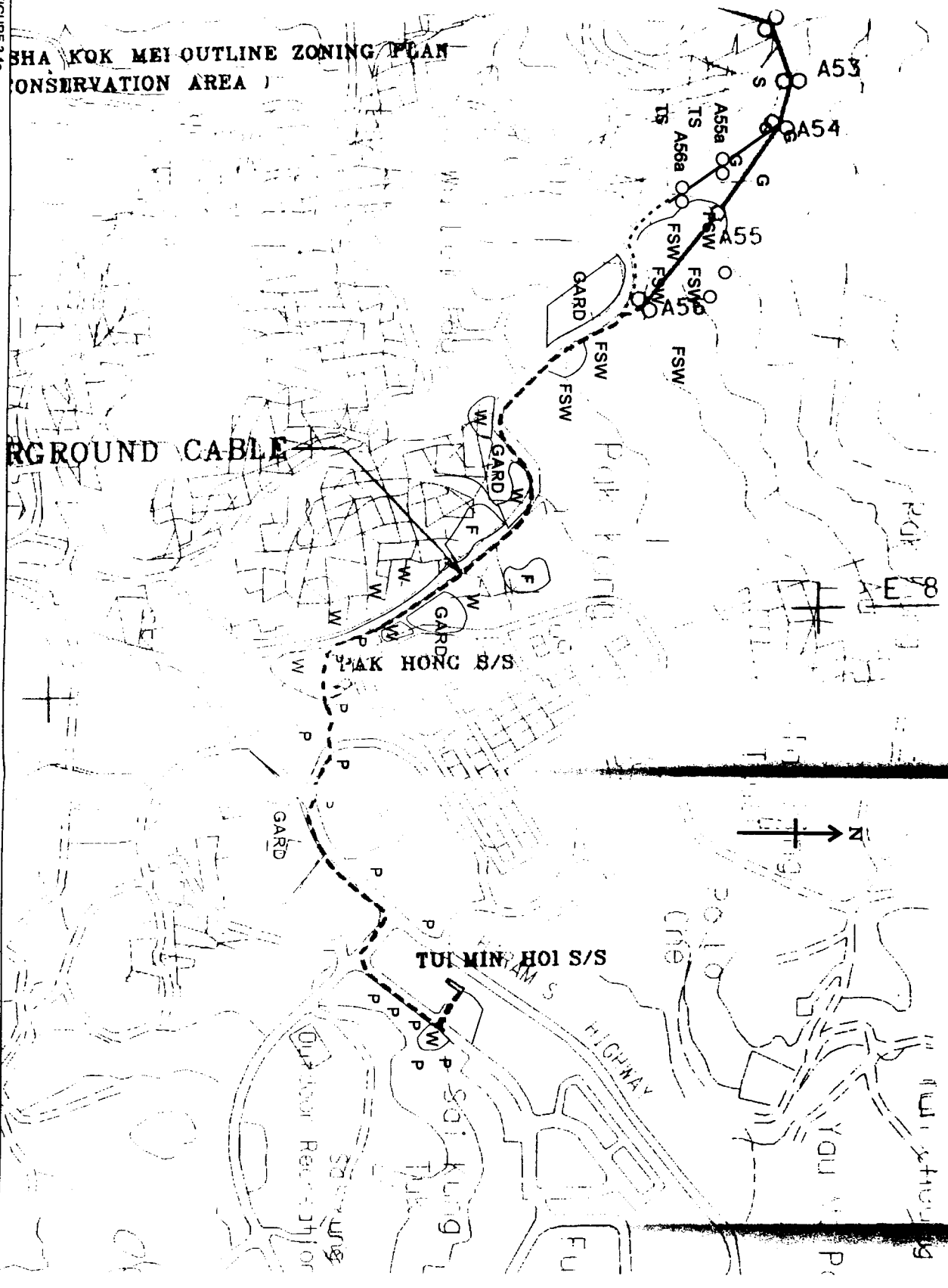
GROUND CABLE

- KEY
- S = SHRUBLAND
 - TS = TALL SHRUBLAND
 - P = PLANTATION
 - F = SECONDARY FOREST
 - G = GRASSLAND
 - FSW = FENG SHUI WOOD
 - ORCH = ORCHARD
 - GARD = GARDEN
 - W = WASTELAND
- ORIGINAL SURVEYED
 - ALTERNATIVE ALIGNMENT
 - HOLES MADE BY WILD BOAR
 - BURROW OF SMALL INDIAN CIVET
 - FACES OF PARKING DEER
 - WILD BOAR TRACK
 - ROBERT BURROW
- SCALE 1:5000

SHA KOK MEI OUTLINE ZONING PLAN
(CONSERVATION AREA)

FIGURE 3.10

HABITAT MAP FOR POWERLINE ALIGNMENT (UNDERGROUND CABLE SECTION TO TUI MIN HOI)



- KEY
- S = SHRUBLAND
 - TS = TALL SHRUBLAND
 - P = PLANTATION
 - F = SECONDARY FOREST
 - G = GRASSLAND
 - FSW = FENG SHUI WOOD
 - ORCH = ORCHARD
 - GRD = GARDEN
 - W = WASTELAND
 - STREAM
 - ALTERNATIVE ALIGNMENT
 - HOLES MADE BY WILD BOAR

SCALE 1:5000



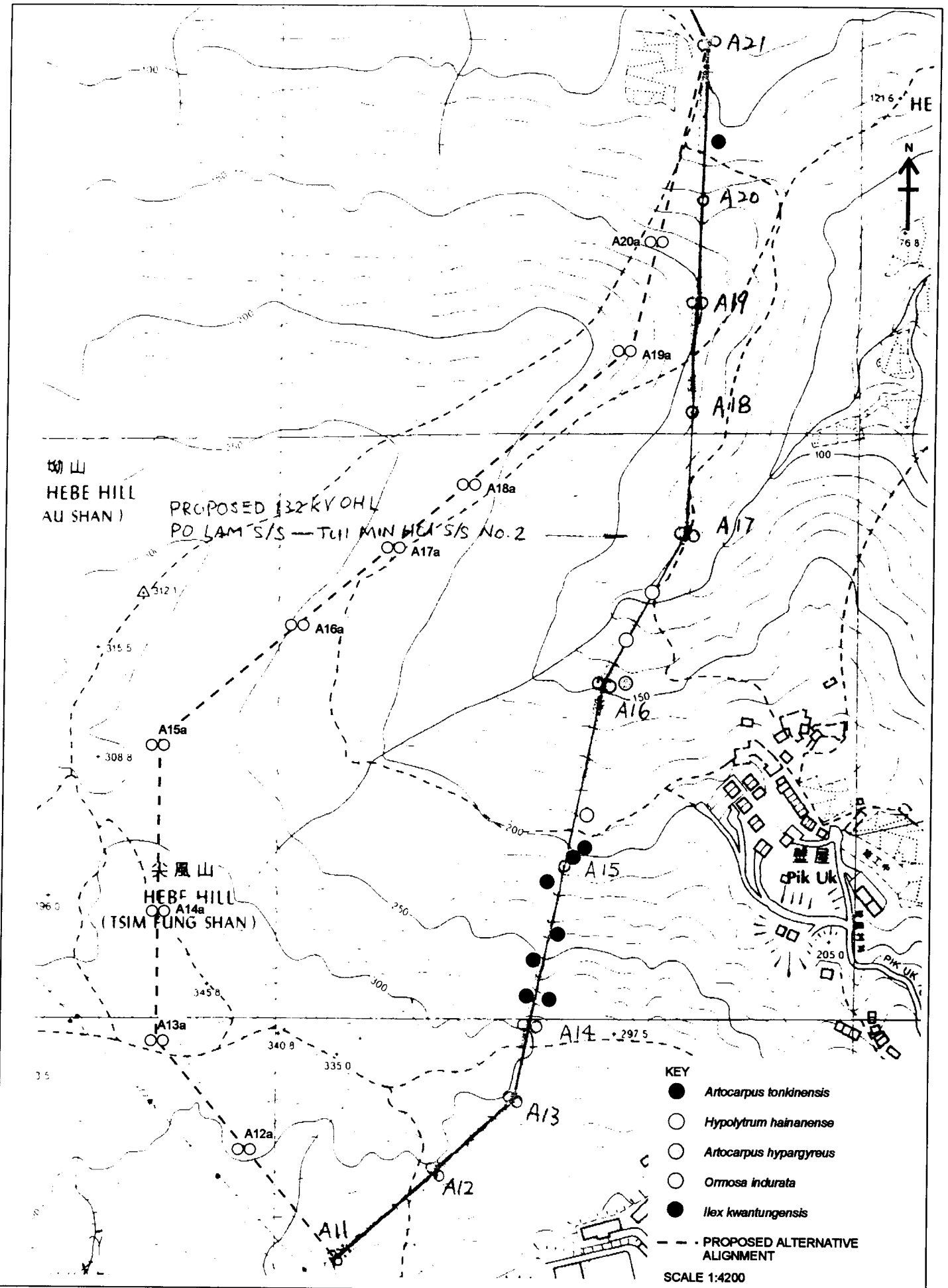


FIGURE 3.1h LOCATION OF RARE/PROTECTED PLANTS IN FENG-SHUI WOOD AT POLE A11-21

FILE: C1832g
DATE: 13/11/98

Environmental Resources Management

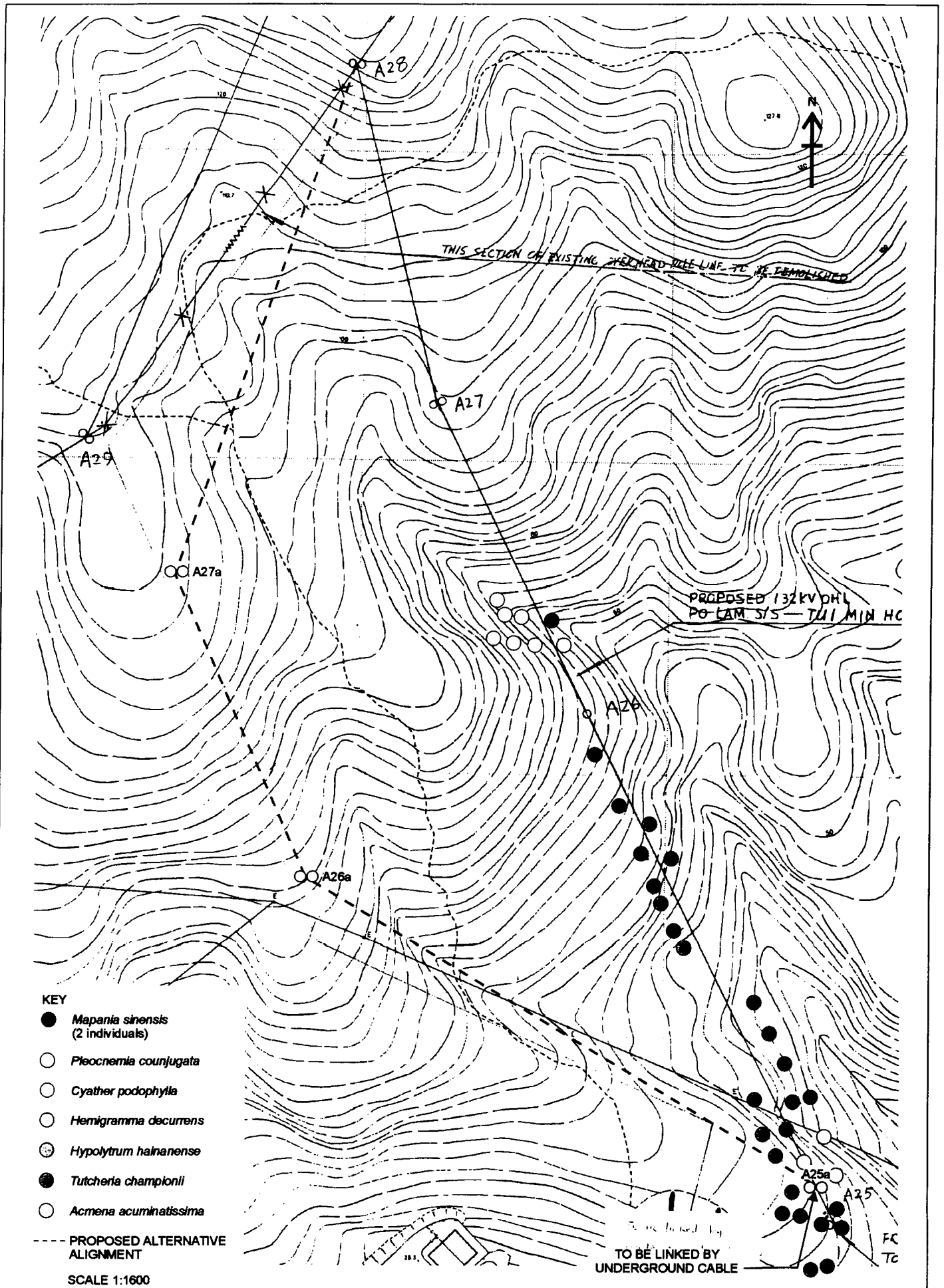


FIGURE 3.1i LOCATION OF RARE/PROTECTED PLANTS AT HO CHUNG VALLEY

Environmental
Resources
Management



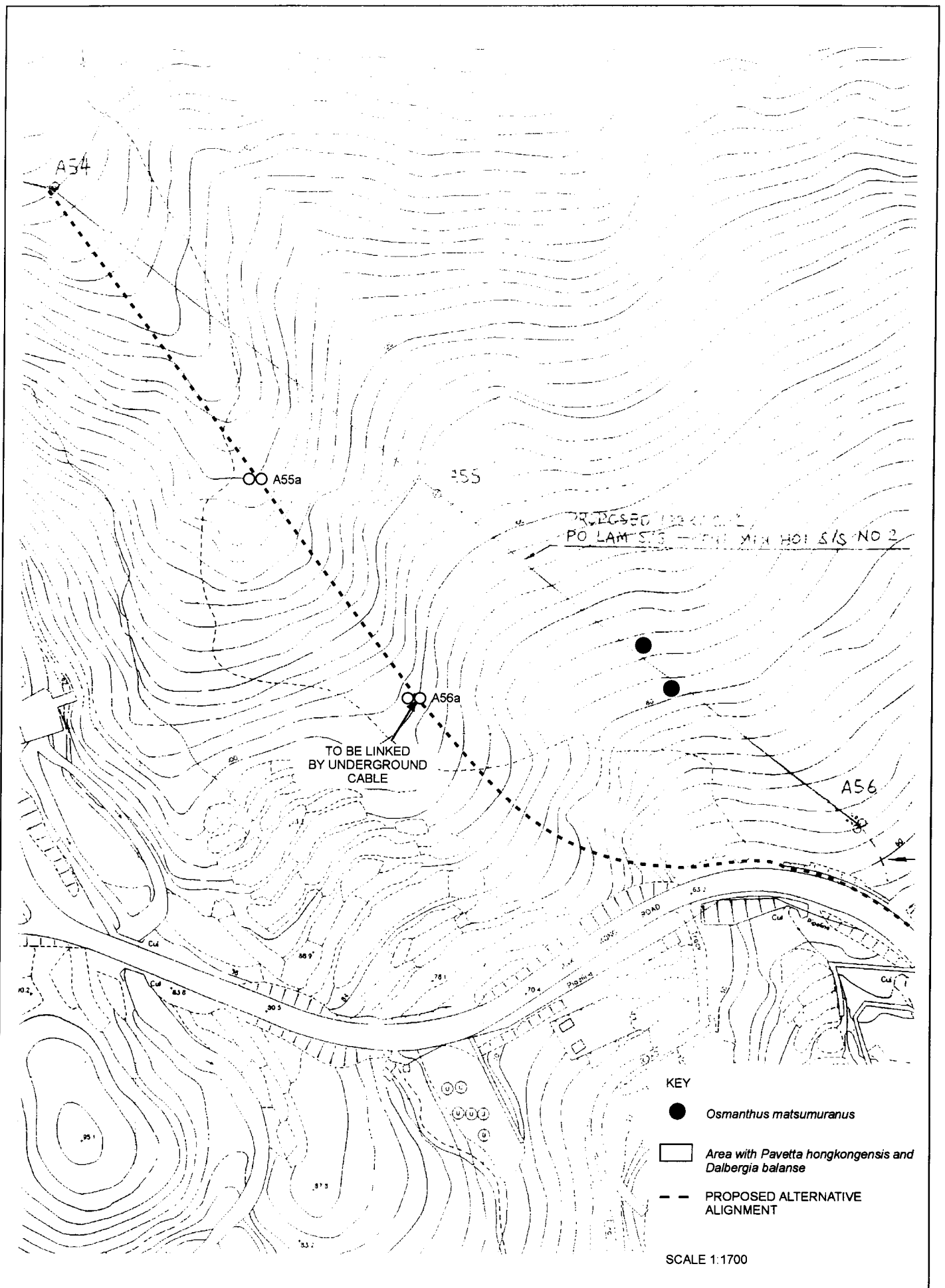


FIGURE 3.1j

LOCATION OF RARE PLANT AT PAK KONG

FILE: C1832h
DATE: 21/01/99

Environmental
Resources
Management





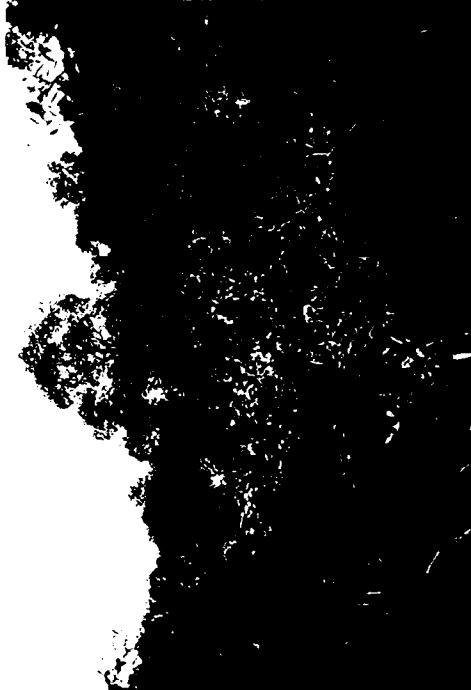
SECONDARY FOREST



FENG-SHUI WOOD AT PAK KONG



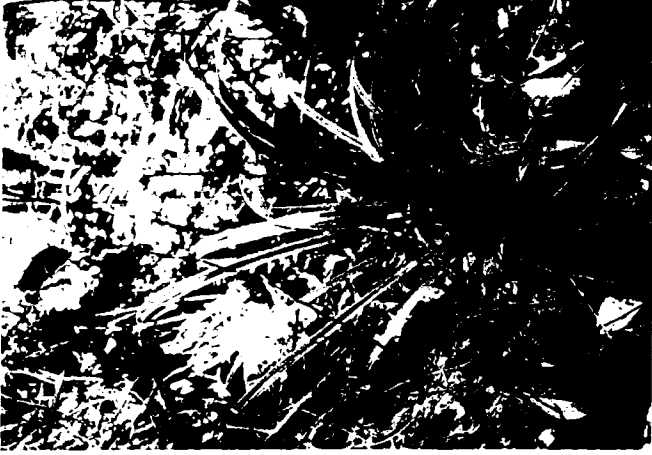
GRASSLAND HABITAT



TALL SHRUBLAND

FIGURE 3.1k

HABITAT TYPES ALONG THE POWERLINE ALIGNMENT



HYPOLYTUM HAINANENSE



MAPANIA SINENSIS



ORMOSIA INDURATA



FENG-SHUI WOOD AT HO CHUNG

FIGURE 3.11

HABITAT TYPES AND RARE/PROTECTED PLANTS ALONG THE POWERLINE ALIGNMENT

Environmental
Resources
Management





FENG-SHUI WOOD BETWEEN POLE A55 AND A56



ANIA HONGKONGENSIS



HEMIGRAMMA DECURRENS



PLEOCNEMIA CONJUGATA

FIGURE 3.1m

HABITAT TYPES AND RARE/PROTECTED PLANTS ALONG THE POWERLINE ALIGNMENT



ILEX KWANGTUNGENSIS



WASTELAND OPPOSITE TO TUI MIN HOI SUBSTATION



ORCHARD



PLANTATION OF TRISTAMIA CONFERTA BELOW THE ALIGNMENT
FORM POLE A43 TO A45

FIGURE 3.1n

HABITAT TYPES AND RARE/PROTECTED PLANTS ALONG THE POWERLINE ALIGNMENT

Environmental
Resources
Management



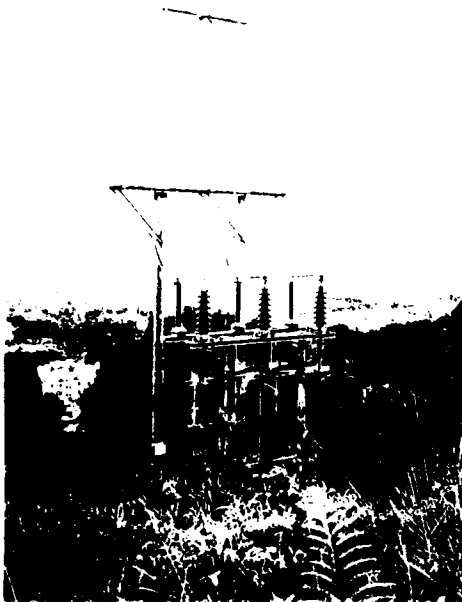


FIGURE 3.2a

BURROW OF SMALL INDIAN CIVET IN SHRUBLAND AT POLE A51

Environmental
Resources
Management





FRONT VIEW OF TERMINAL POLE



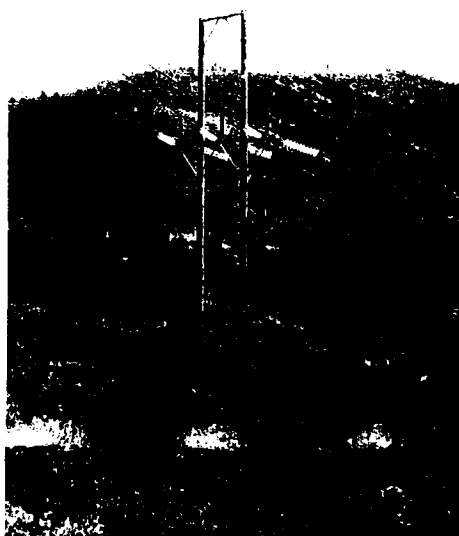
FRONT VIEW OF TWIN POLE
SET AGAINST SKYLINE



FRONT VIEW OF SINGLE POLE
SET AGAINST SKYLINE



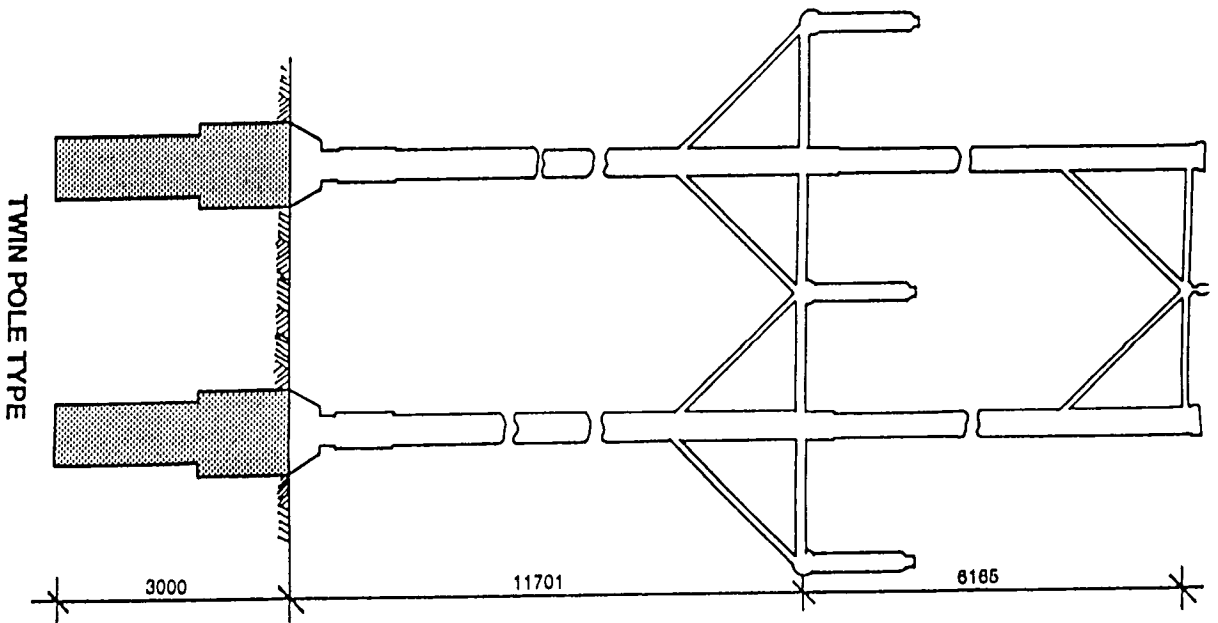
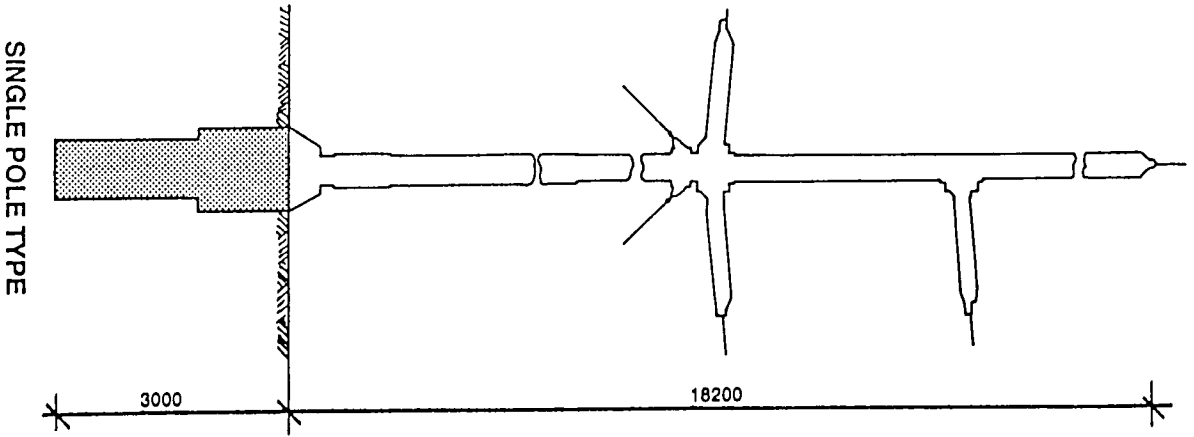
FRONT VIEW OF SINGLE POLE WITH
TYPICAL ACCESS TRACK



FRONT VIEW OF TWIN POLE SET AGAINST
BACKDROP OF HILLSIDE



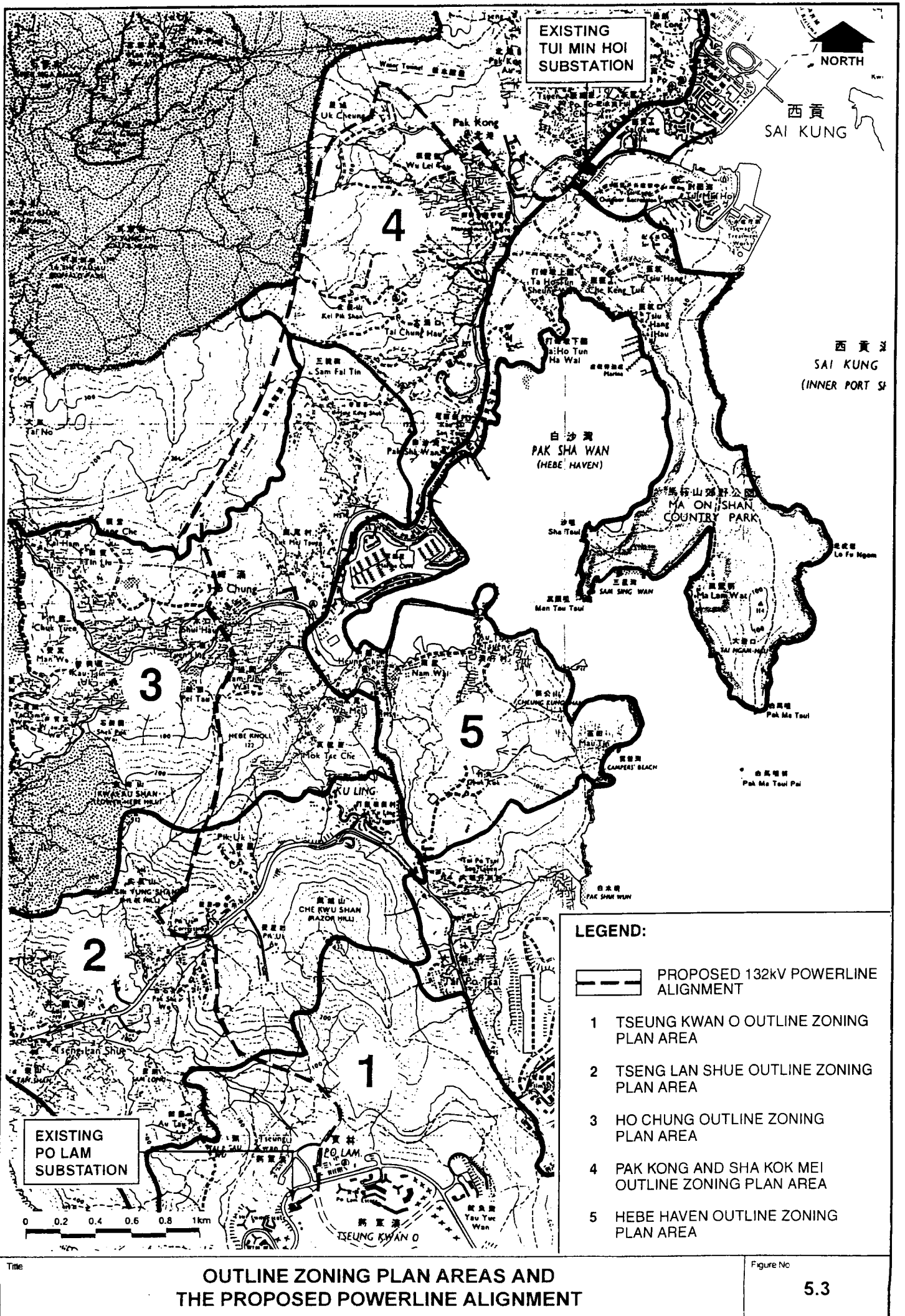
SIDE VIEW OF TWIN POLE SET AGAINST
BACKDROP OF VEGETATION

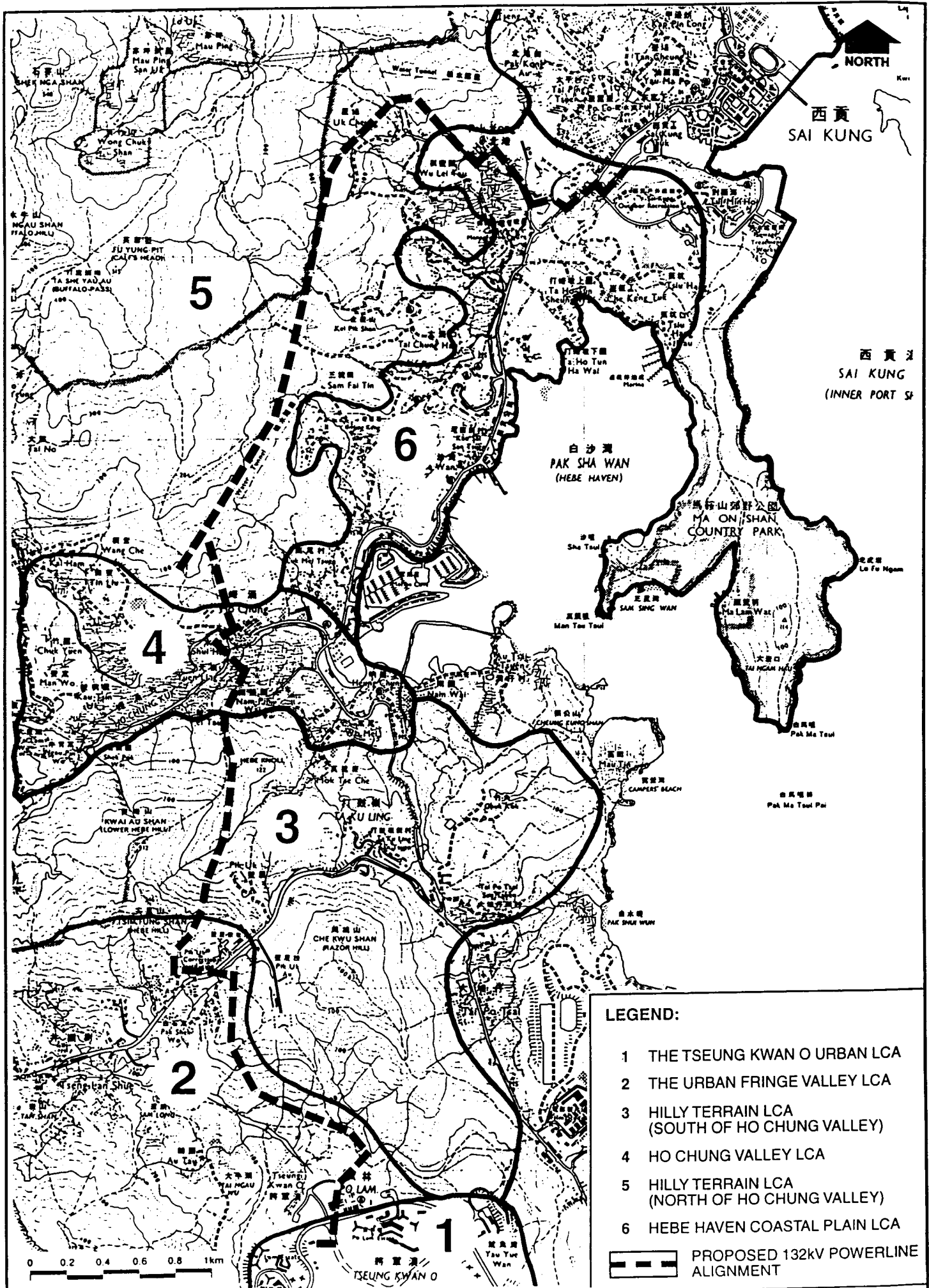


ELEVATIONS OF TYPICAL 132KV OVERHEAD POWERLINE POLES

Title

Figure No



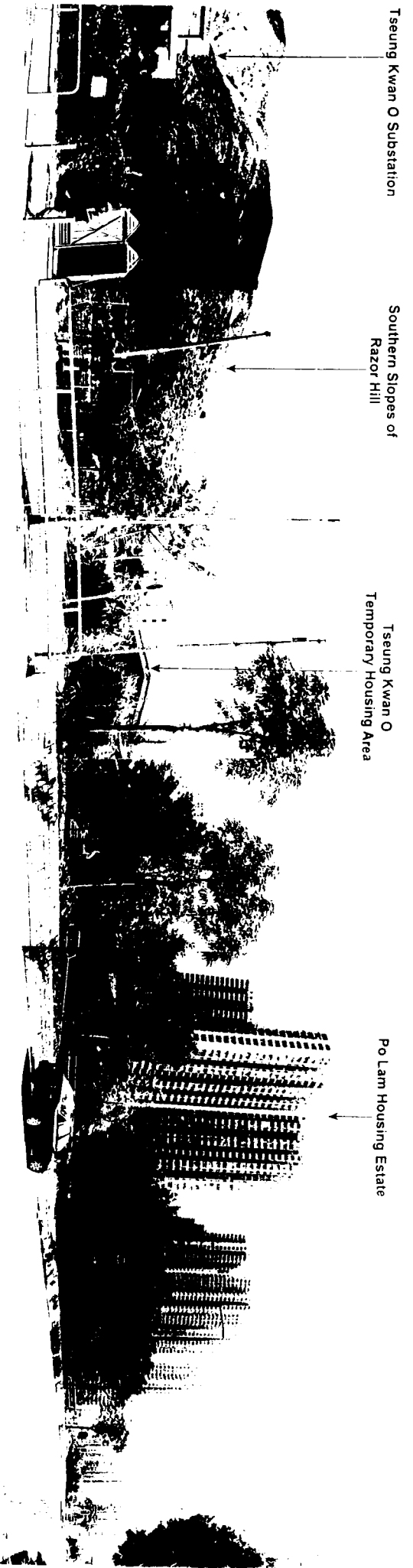


Title

LANDSCAPE CHARACTER AREAS

Figure No

5.6



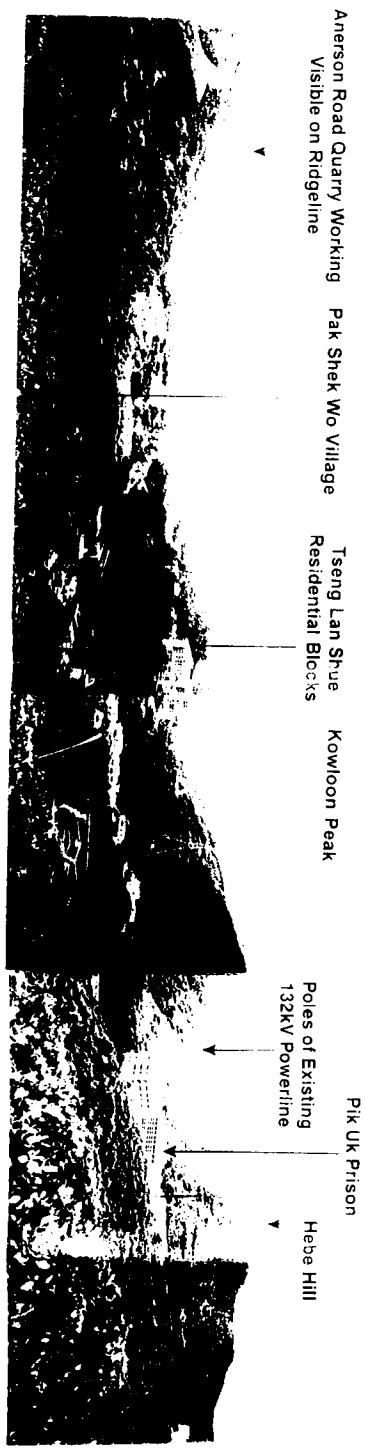
Tseung Kwan O Substation

Southern Slopes of Razor Hill

Tseung Kwan O Temporary Housing Area

Po Lam Housing Estate

VIEW OF THE NORTHERN EDGE OF TSEUNG KWAN O



Anerson Road Quarry Working Visible on Ridgeline

Pak Shek Wo Village

Tseung Lan Shue Residential Blocks

Kowloon Peak

Poles of Existing 132kV Powerline

Pik Uk Prison

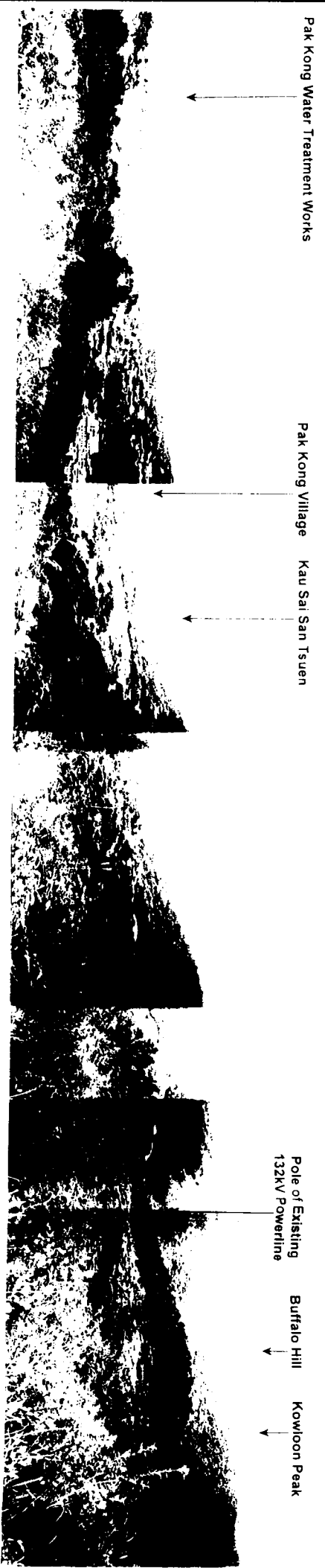
Hebe Hill

VIEW OF HEBE HILL AND THE SAM LONG RIVER VALLEY

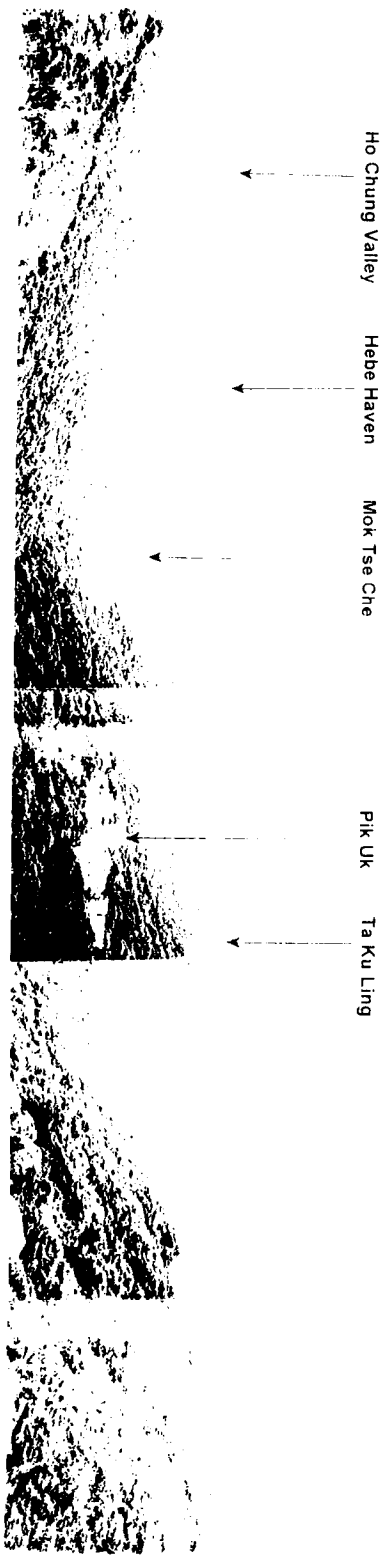
PANORAMIC PHOTOGRAPHS OF LANDSCAPE ALONG THE PROPOSED POWERLINE ALIGNMENT (1 OF 2)

Figure No.

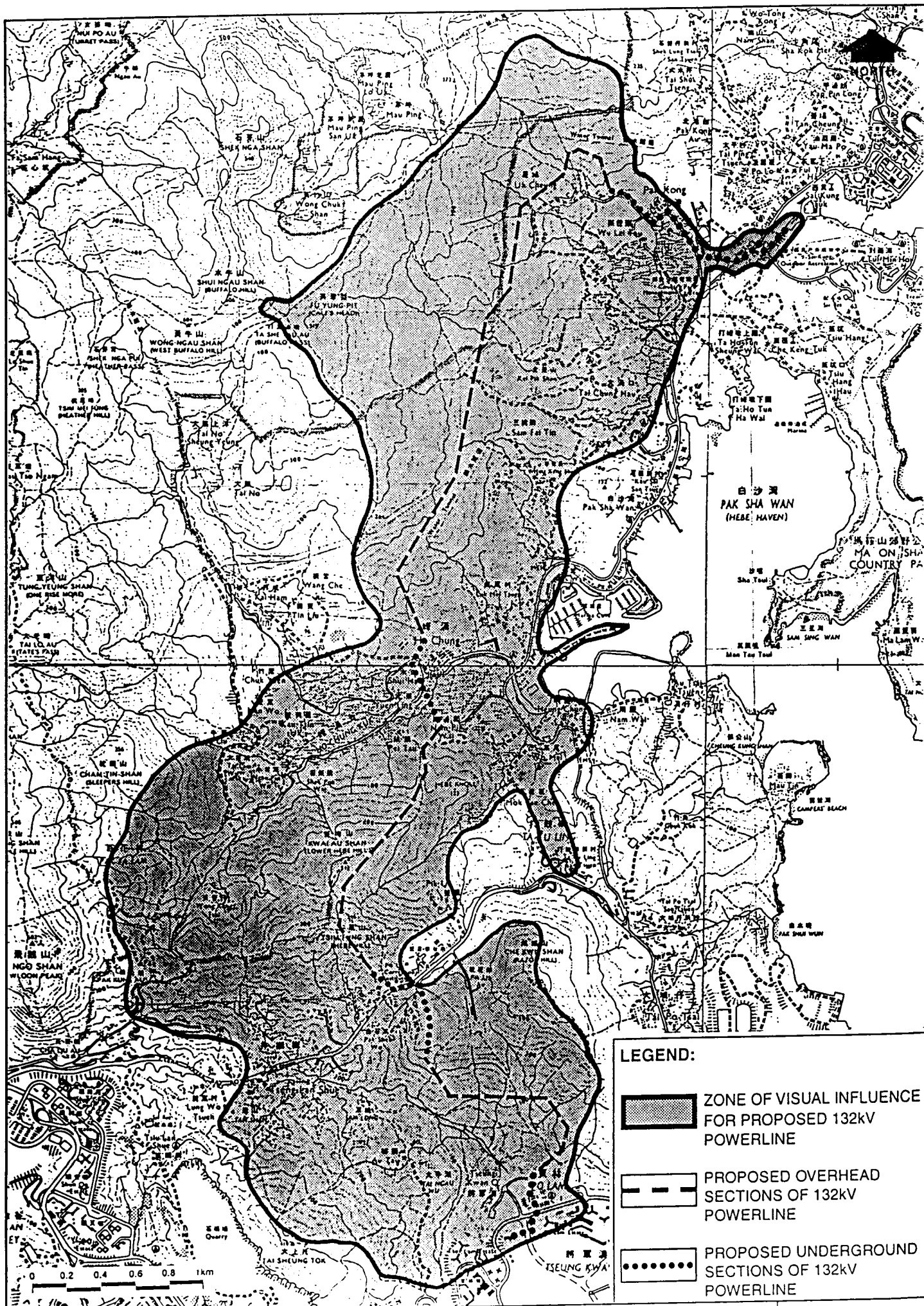
5.7



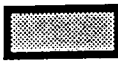
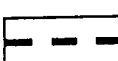
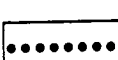
VIEW OF HO CHUNG VILLAGE AND THE LOWER HILL SLOPES OF BUFFALO HILL



VIEW OF THE NORTHERN SLOPES OF HEBE HILL, HEBE HAVEN AND THE HO CHUNG VALLEY

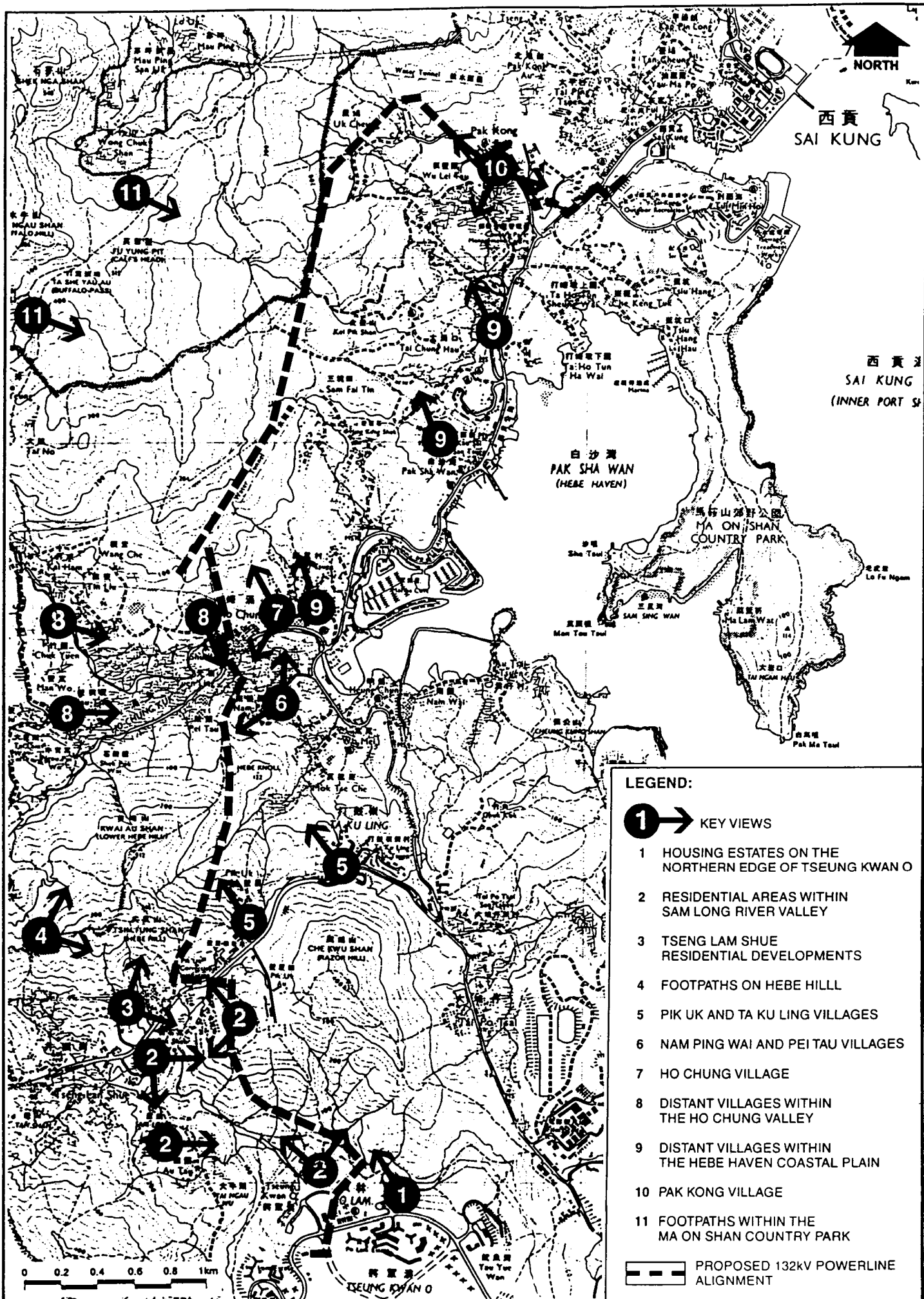


LEGEND:

-  ZONE OF VISUAL INFLUENCE FOR PROPOSED 132kV POWERLINE
-  PROPOSED OVERHEAD SECTIONS OF 132kV POWERLINE
-  PROPOSED UNDERGROUND SECTIONS OF 132kV POWERLINE

ZONE OF VISUAL INFLUENCE FOR PROPOSED 132kV POWERLINE

Figure No

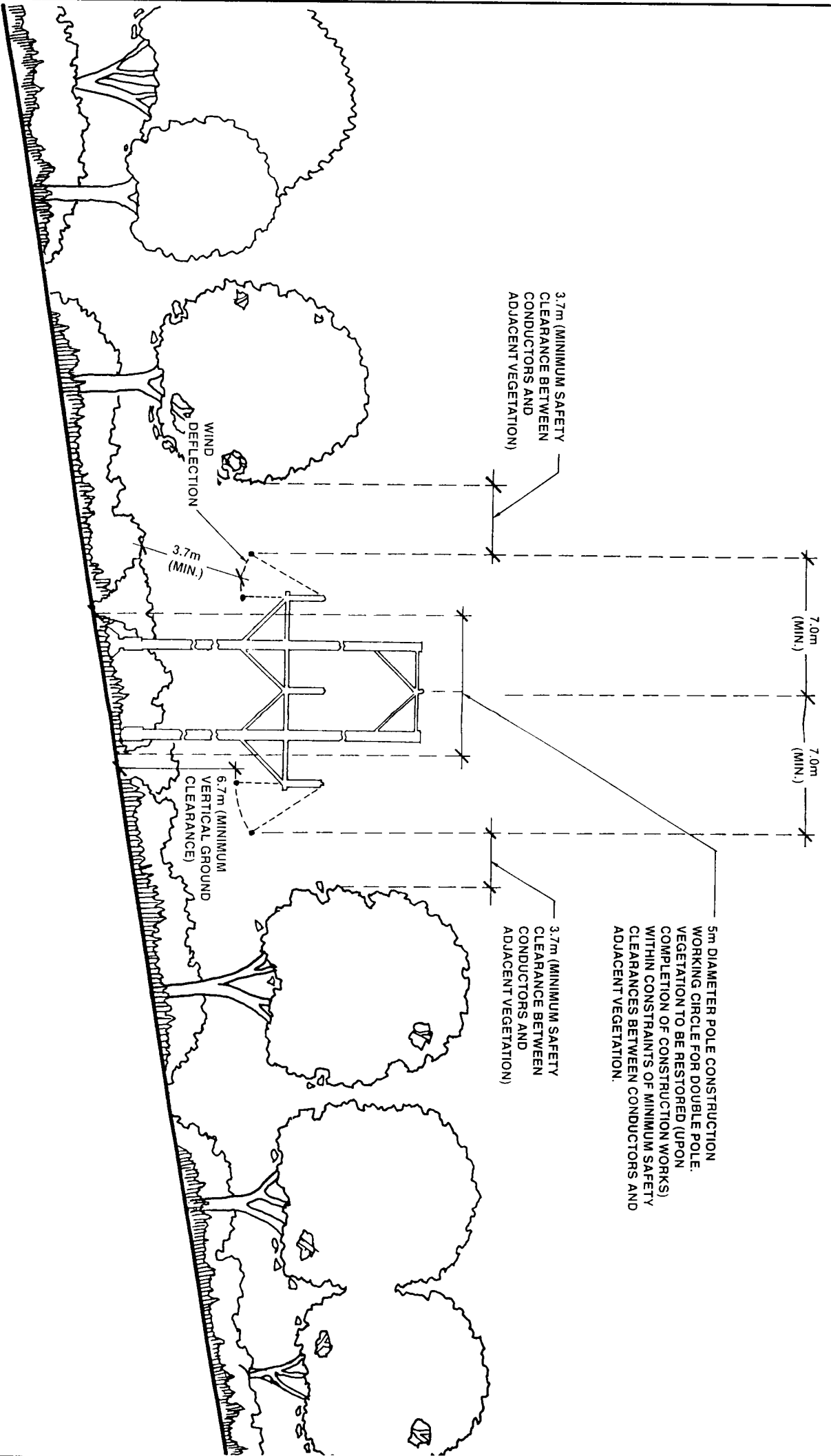


Title

KEY VIEWS WITHIN THE ZONE OF VISUAL INFLUENCE

Figure No

5.10



5m DIAMETER POLE CONSTRUCTION WORKING CIRCLE FOR DOUBLE POLE VEGETATION TO BE RESTORED (UPON COMPLETION OF CONSTRUCTION WORKS) WITHIN CONSTRAINTS OF MINIMUM SAFETY CLEARANCES BETWEEN CONDUCTORS AND ADJACENT VEGETATION.

3.7m (MINIMUM SAFETY CLEARANCE BETWEEN CONDUCTORS AND ADJACENT VEGETATION)

WIND DEFLECTION

3.7m (MIN.)

6.7m (MINIMUM VERTICAL GROUND CLEARANCE)

3.7m (MINIMUM SAFETY CLEARANCE BETWEEN CONDUCTORS AND ADJACENT VEGETATION)

7.0m (MIN.)

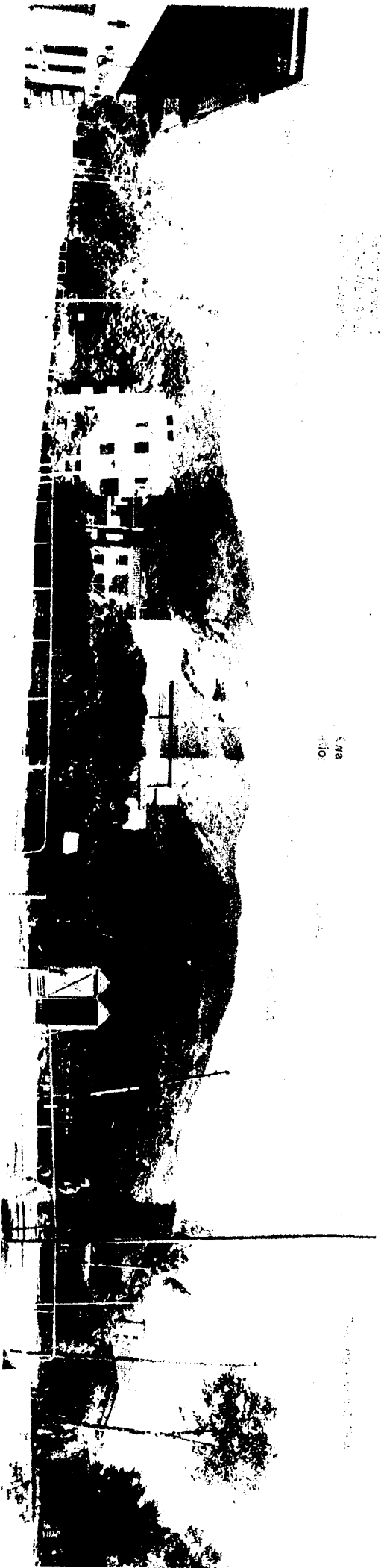
7.0m (MIN.)

CONCEPTUAL CROSS-SECTION SHOWING POTENTIAL VEGETATION CLEARANCE ASSOCIATED WITH BOTH POLE CONSTRUCTION WORK SITES AND THE MAINTENANCE OF SAFETY CLEARANCES BETWEEN CONDUCTORS AND ADJACENT VEGETATION

Title

Figure No

5.11



**PHOTOMONTAGE OF PROPOSED POWERLINE ON SIDESLOPES OF RAZOR HILL
(AS SEEN FROM TSEUNG KWAN O VILLAGE)**

Title

Figure No

5.12

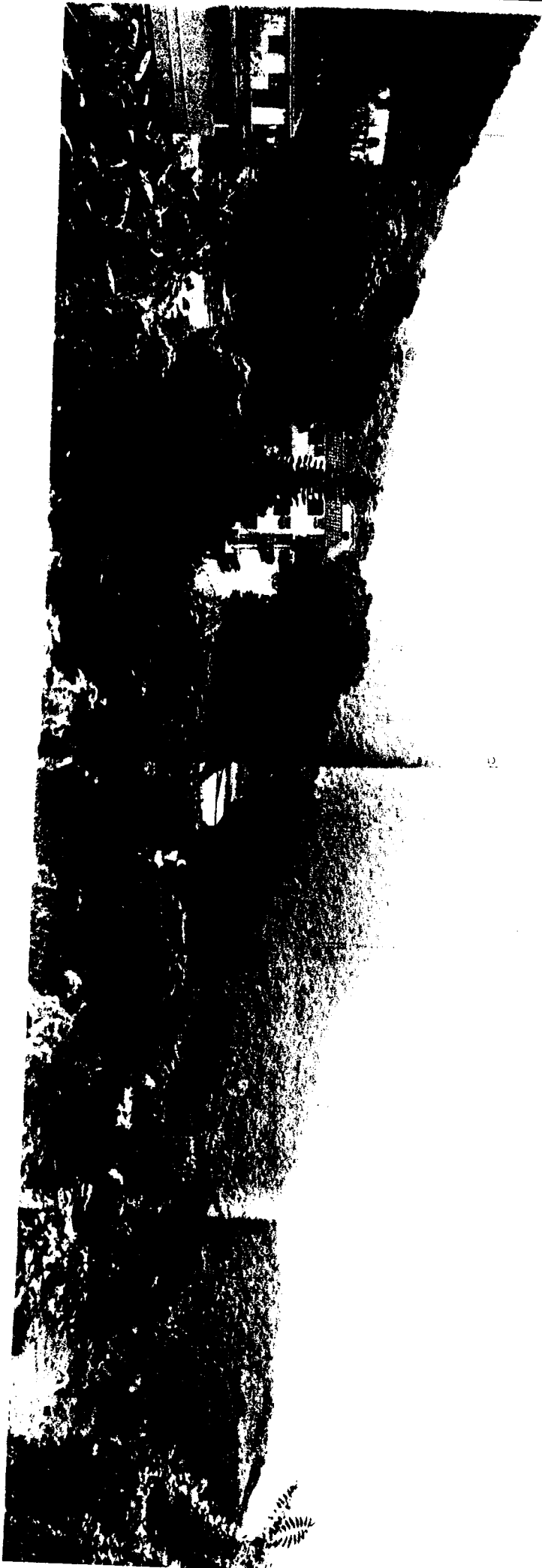


Title

PHOTOMONTAGE OF PROPOSED POWERLINE ON THE SOUTHERN SLOPES OF HEBE HILL

Figure No

5.13

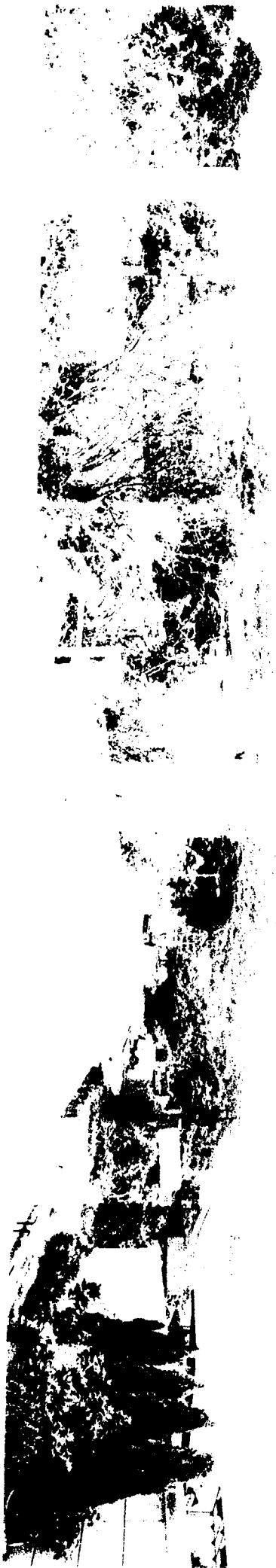


**PHOTOMONTAGE OF PROPOSED POWERLINE ON SIDESLOPES OF LOWER HEBE HILL
(AS SEEN FROM TA KU LING VILLAGE)**

Title

Figure No

5.14



Title

PHOTOMONTAGE OF PROPOSED POWERLINE AT REAR OF NAM PIN WAI VILLAGE

Figure No

5.15

EXISTING PO LAM - TU MIN HOI
No. 1 POWERLINE



TYPICAL VIEW OF EASTERN SLOPES OF BUFFALO HILL

UPPER SLOPES OF BUFFALO HILL
TYPICALLY VEGETATED WITH
GRASSLAND / LOW SCRUBLAND

PROPOSED POLELINE TYPICALLY
AT BETWEEN 100mPD AND
200mPD AS IT TRAVERSES
THE HILLS LOCATED TO THE
WEST OF HEBE HAVEN

EXISTING PO LAM - TU MIN HOI
POWERLINE

SMALL WELL-WOODED
KNOLLS TYPICALLY FOUND
ON COASTAL PLAIN

LARGE GROUPS OF VILLAGE
HOUSING TYPICALLY FOUND
ON COASTAL PLAIN IN
ASSOCIATION WITH SMALL
TREE GROUPS, AGRICULTURAL
PLOTS AND HORTICULTURAL
NUSSERIES GENERALLY AT
10mPD TO 20mPD

SMALL SCATTERED GROUPS
OF LOW-RISE HOUSING FOUND
ON LOWER SLOPES OF HILL

LARGE GROUPS OF SECONDARY
HOUSING TYPICALLY FOUND
ON MID-SLOPES OF BUFFALO HILL

SMALL WELL-WOODED
KNOLLS TYPICALLY FOUND
AT BASE OF HILL

AGRICULTURAL PLOTS

TYPICAL CROSS-SECTION SCALE 1:500

TYPICAL VIEW OF EASTERN SLOPES OF BUFFALO HILL AS SEEN FROM EDGE OF HIRAM'S HIGHWAY AND
TYPICAL CROSS-SECTION THROUGH BUFFALO HILL AND ADJACENT COASTAL PLAIN

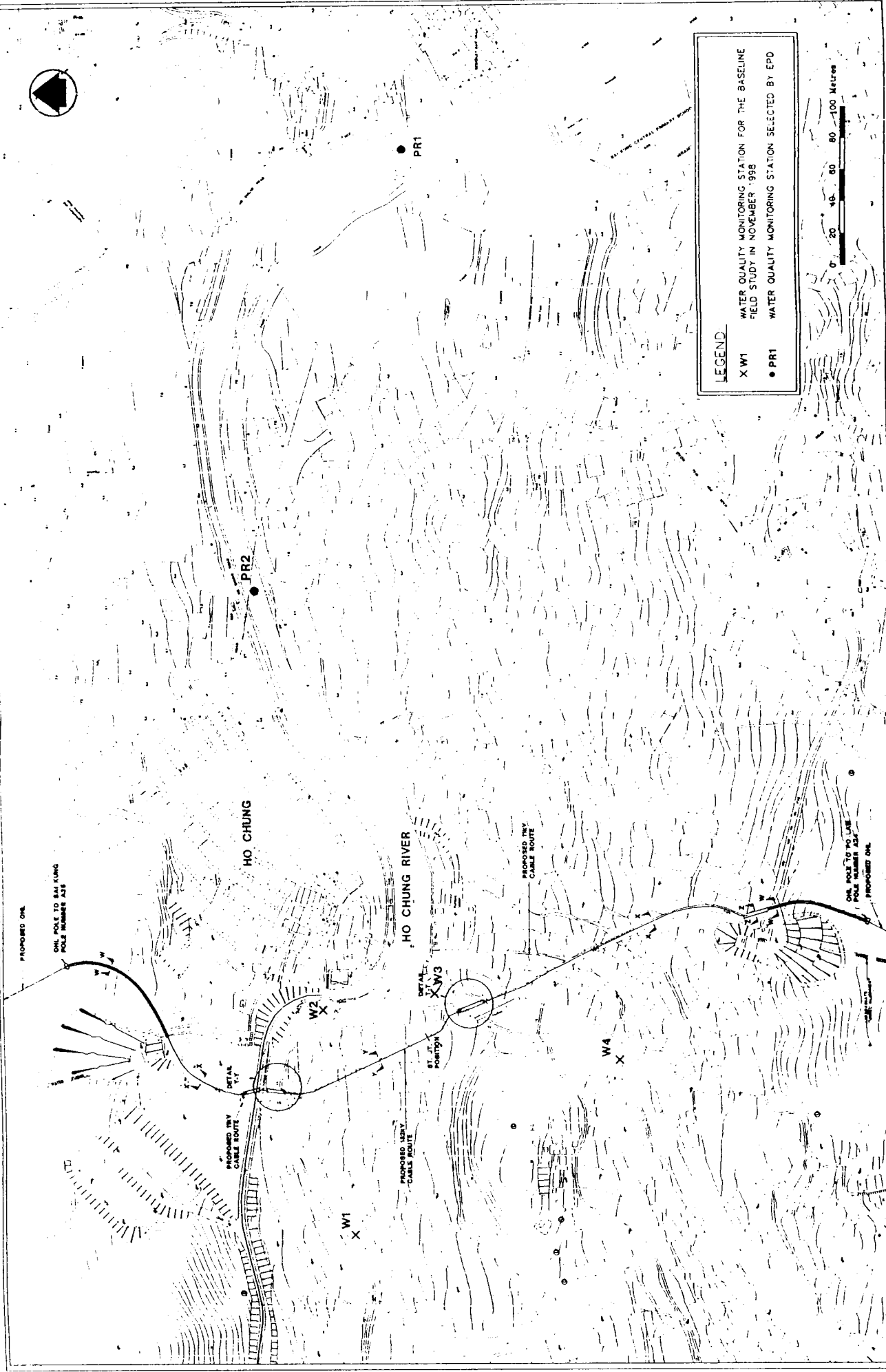


Title

PHOTOMONTAGE OF PROPOSED POWERLINE AT REAR OF PAK KONG VILLAGE

Figure No

5.17



LEGEND
 X W1 WATER QUALITY MONITORING STATION FOR THE BASELINE FIELD STUDY IN NOVEMBER 1998
 ● PR1 WATER QUALITY MONITORING STATION SELECTED BY EPD



Project: 132KV OVERHEAD POLE LINE & UNDERGROUND CABLE FROM THE EXISTING PO LAM SUBSTATION TO THE EXISTING TUM MIN HOI SUBSTATION - CIRCUIT NO. 2

Figure: 61
 Scale: AS S-CAN
 Date: MAY 1999

Mausnell
 MAUSNELL ENVIRONMENTAL
 MANAGEMENT CONSULTANTS LTD

THE LOCATION OF WATER QUALITY MONITORING STATIONS