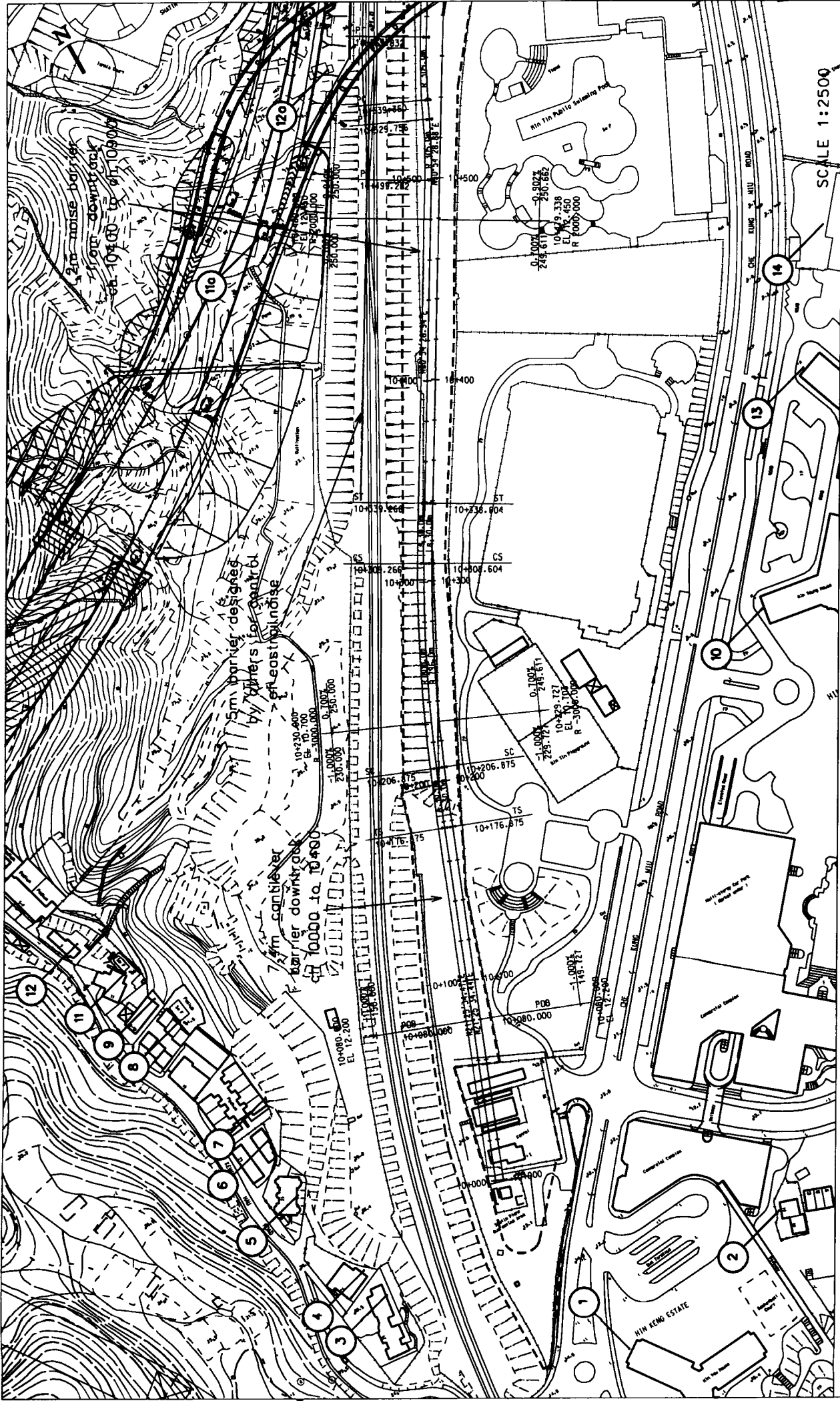


ANNEX F1

Operational Noise Sensitive Receivers



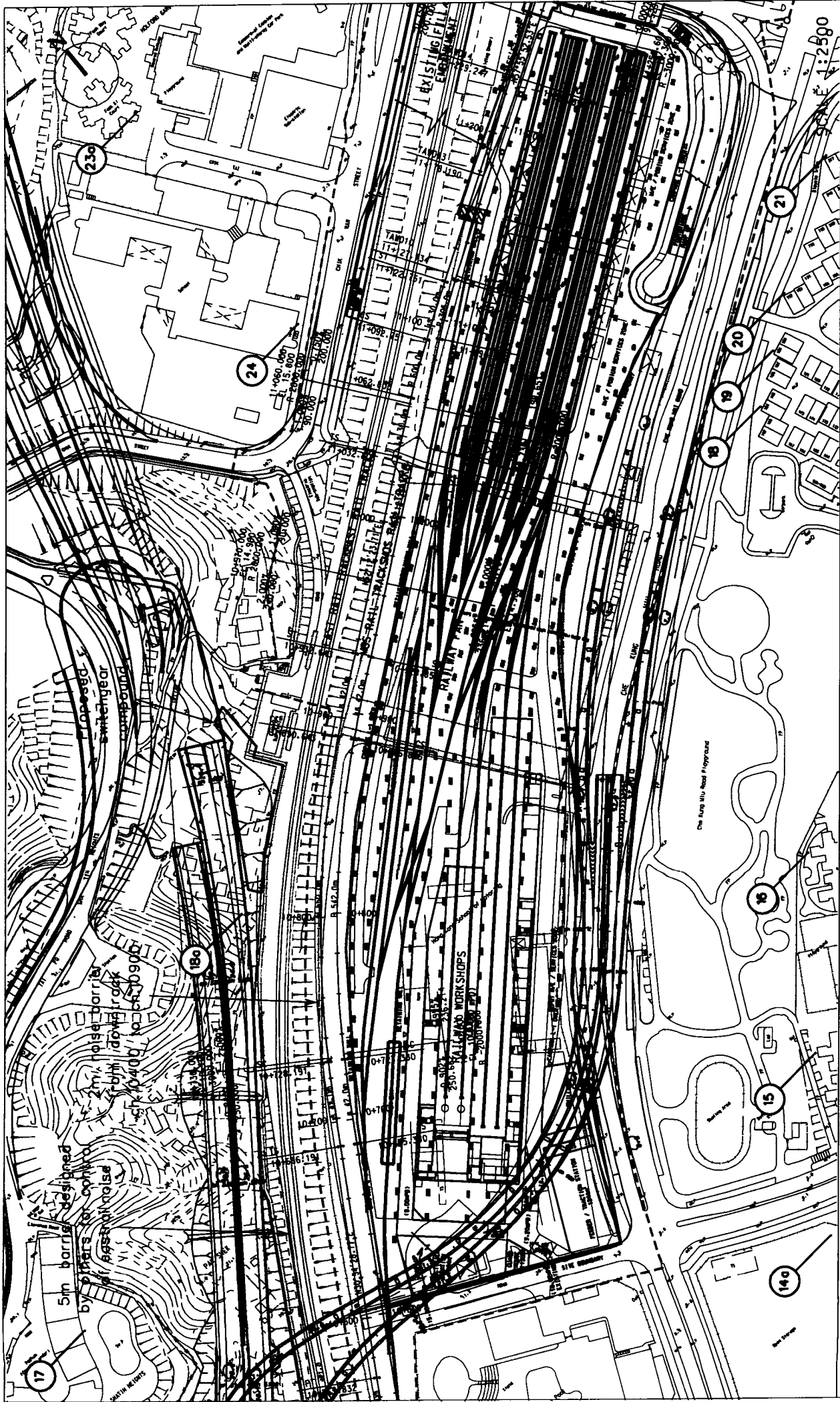


FIGURE 4.5b
 NOISE SENSITIVE RECEIVERS FOR OPERATIONAL NOISE -
 TAI WAI DEPOT

- LEGEND
- Noise Sensitive Receivers
 - Station Site
 - ▨ Worksite Area
 - Alignment
 - Column Foundation Locations for Depot Building



Environmental Resources Management

- LEGEND
- Noise Sensitive Receivers
 - Station Site
 - Worksite Area
 - Alignment
 - Column Foundation Locations for Depot Building

**NOISE SENSITIVE RECEIVERS FOR OPERATIONAL NOISE
TAI WAI STATION TO SHA TIN TAU**

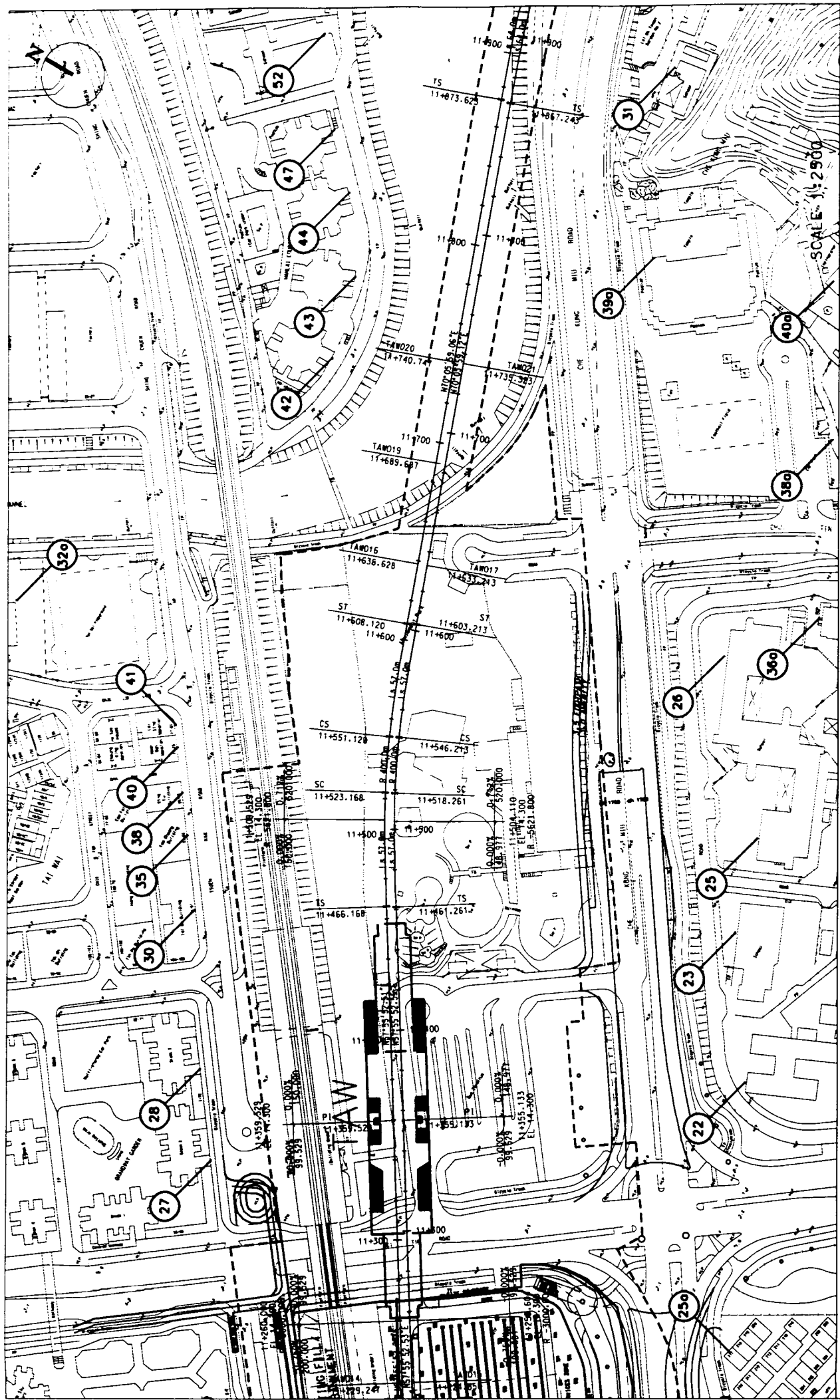


FIGURE 4.5C



Environmental Resources Management

LEGEND
Noise Sensitive Receiver
Station Site
Worksite Area
Alignment

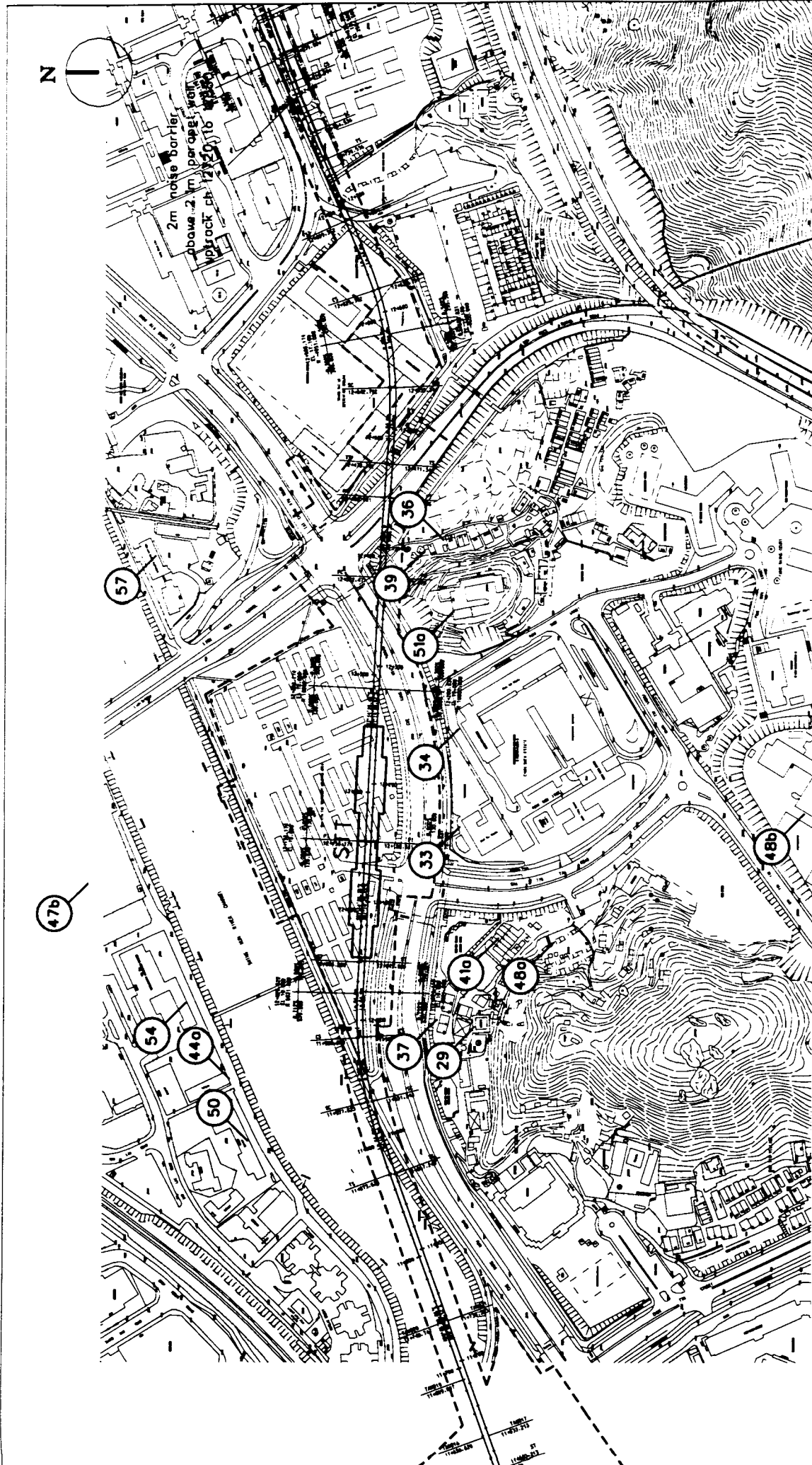
SCALE 1:4500

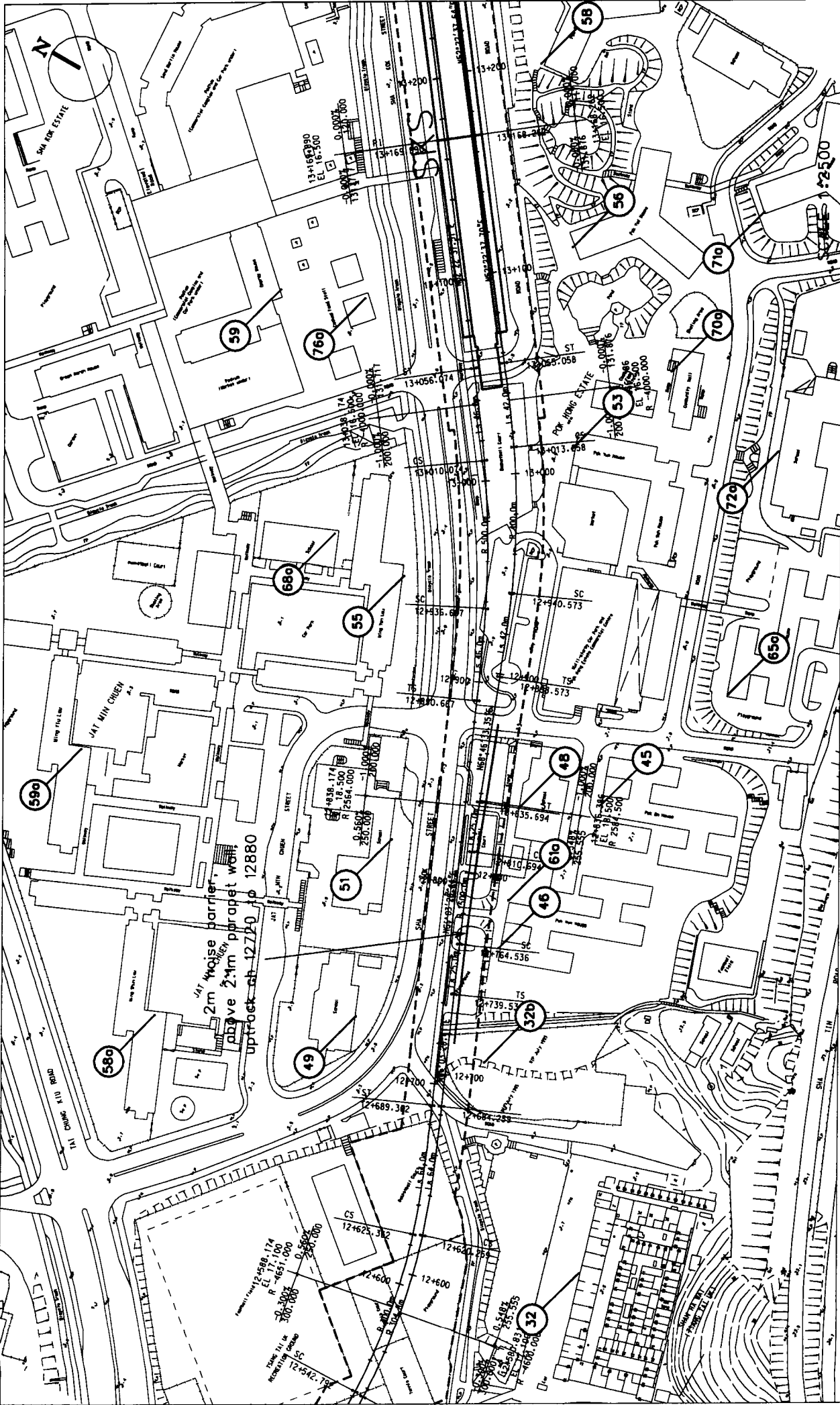
NOISE SENSITIVE RECEIVERS FOR OPERATIONAL NOISE

SHA TIN TAU TO SHA KOK STREET

FIGURE 4.5d

USTN FILE: C185004
DATE: 04/99





**NOISE SENSITIVE RECEIVERS FOR OPERATIONAL NOISE
SHA TIN TAU TO SHA KOK STREET**

Environmental Resources Management

ERM

LEGEND

- Noise Sensitive Receivers
- Station Site
- Worksite Area
- Alignment

FIGURE 4.5e

USTN FILE: C189005
DATE: 04/99



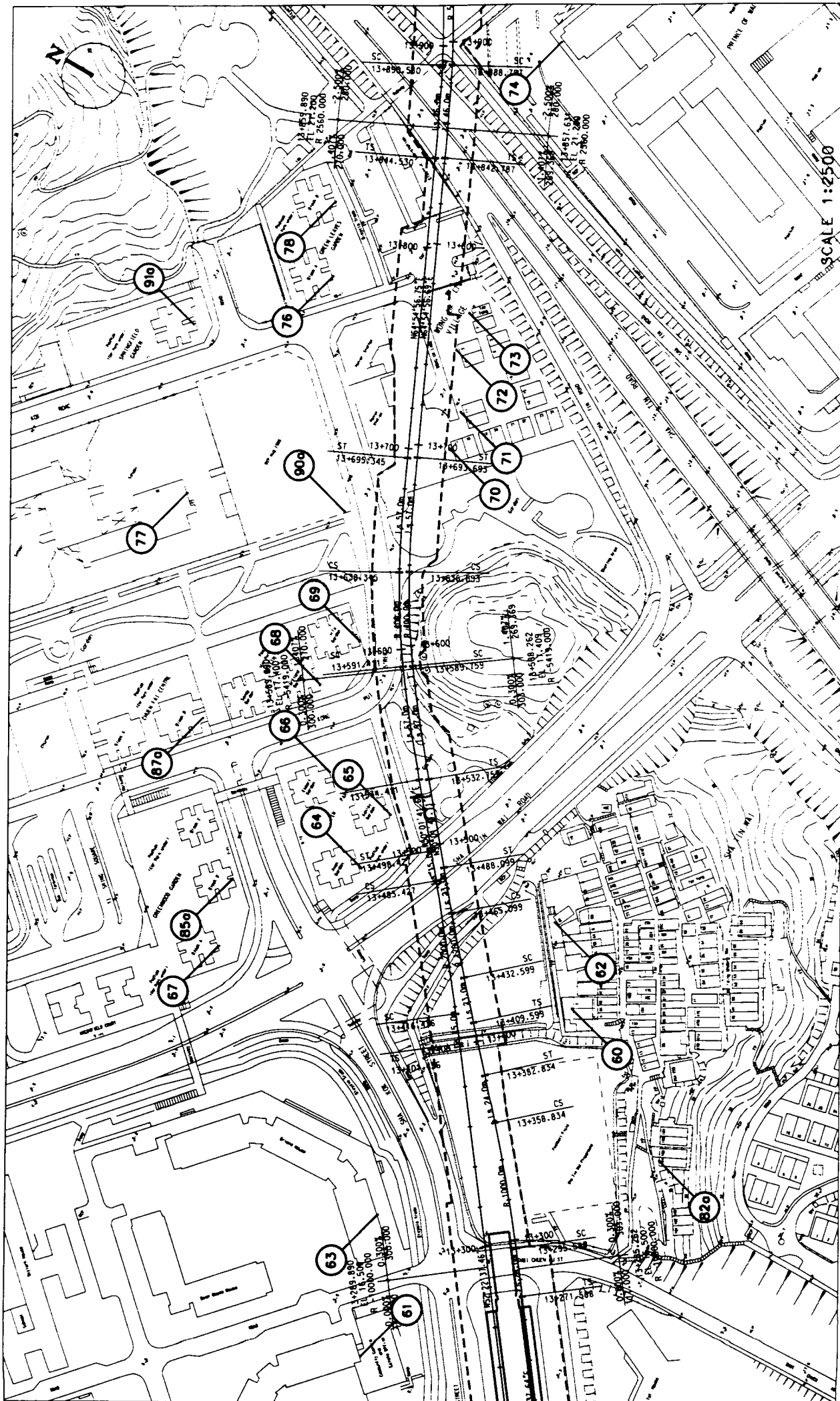
Environmental Resources Management

LEGEND
Noise Sensitive Receivers
Station Site
Worksite Area
Alignment

NOISE SENSITIVE RECEIVERS FOR OPERATIONAL NOISE
SHA KOK STREET TO CITY ONE SHATIN

FIGURE 4.5f

USIN FILE: C189005
DATE: 04/99



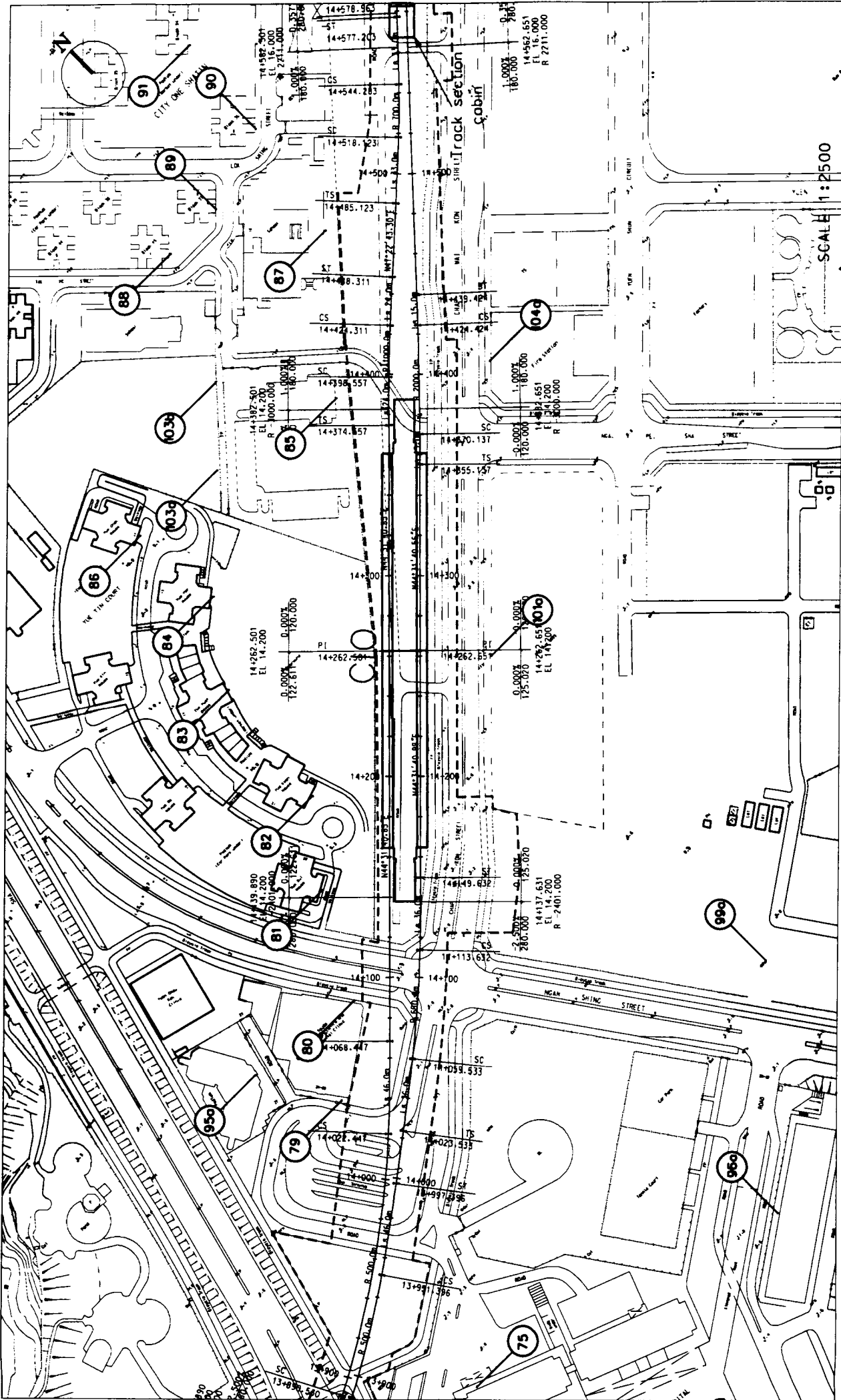
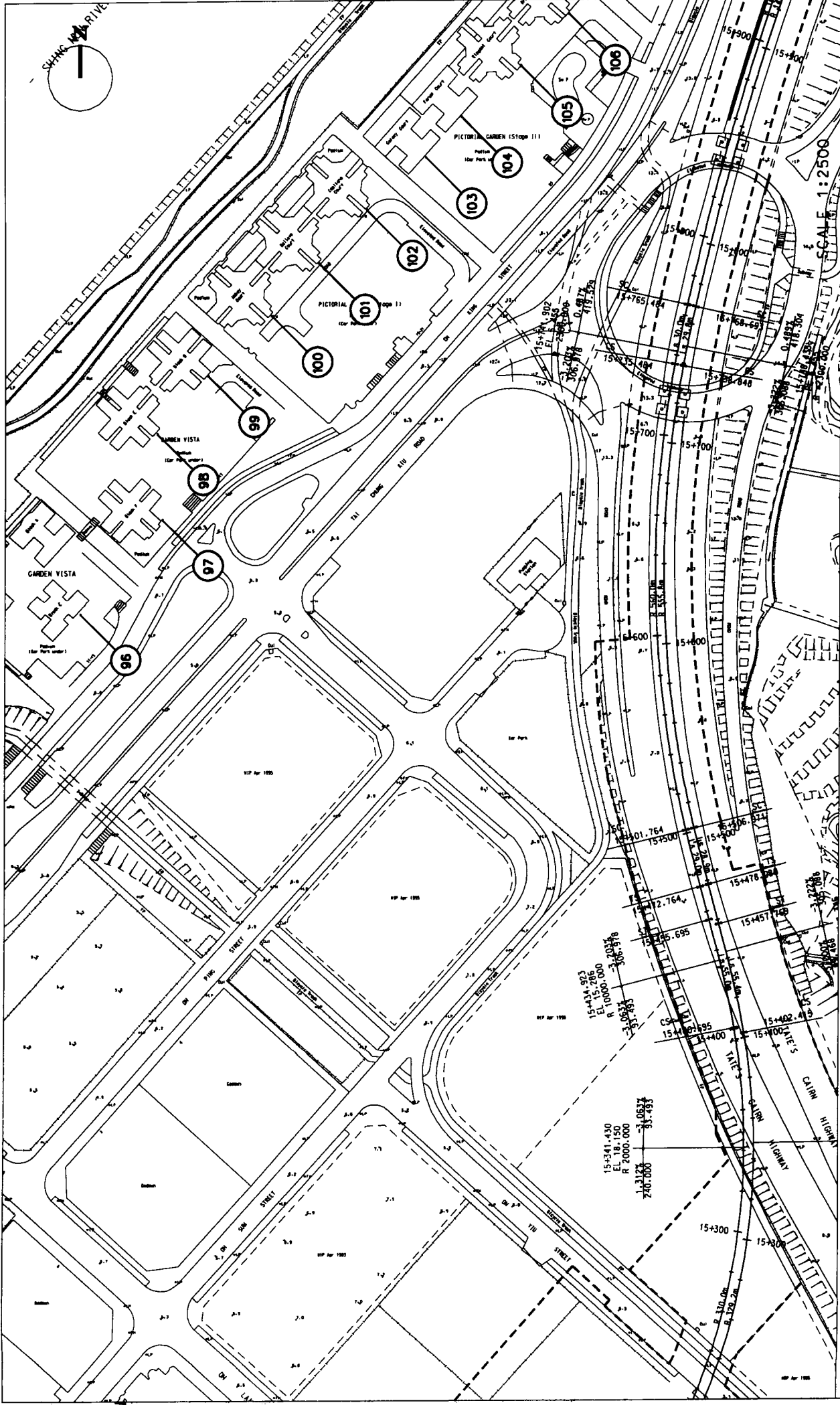


FIGURE 4.59
 NOISE SENSITIVE RECEIVERS FOR OPERATIONAL NOISE
 CITY ONE SHATIN TO SHEK MUN

LEGEND
 Noise Sensitive Receivers
 Station Site
 Worksite Area
 Alignment

Environmental
 Resources
 Management





NOISE SENSITIVE RECEIVERS FOR OPERATIONAL NOISE
SHEK MUN TO CHEVALIER GARDEN

FIGURE 4.51

LEGEND
 Noise Sensitive Receivers
 Station Site
 Worksite Area
 Alignment

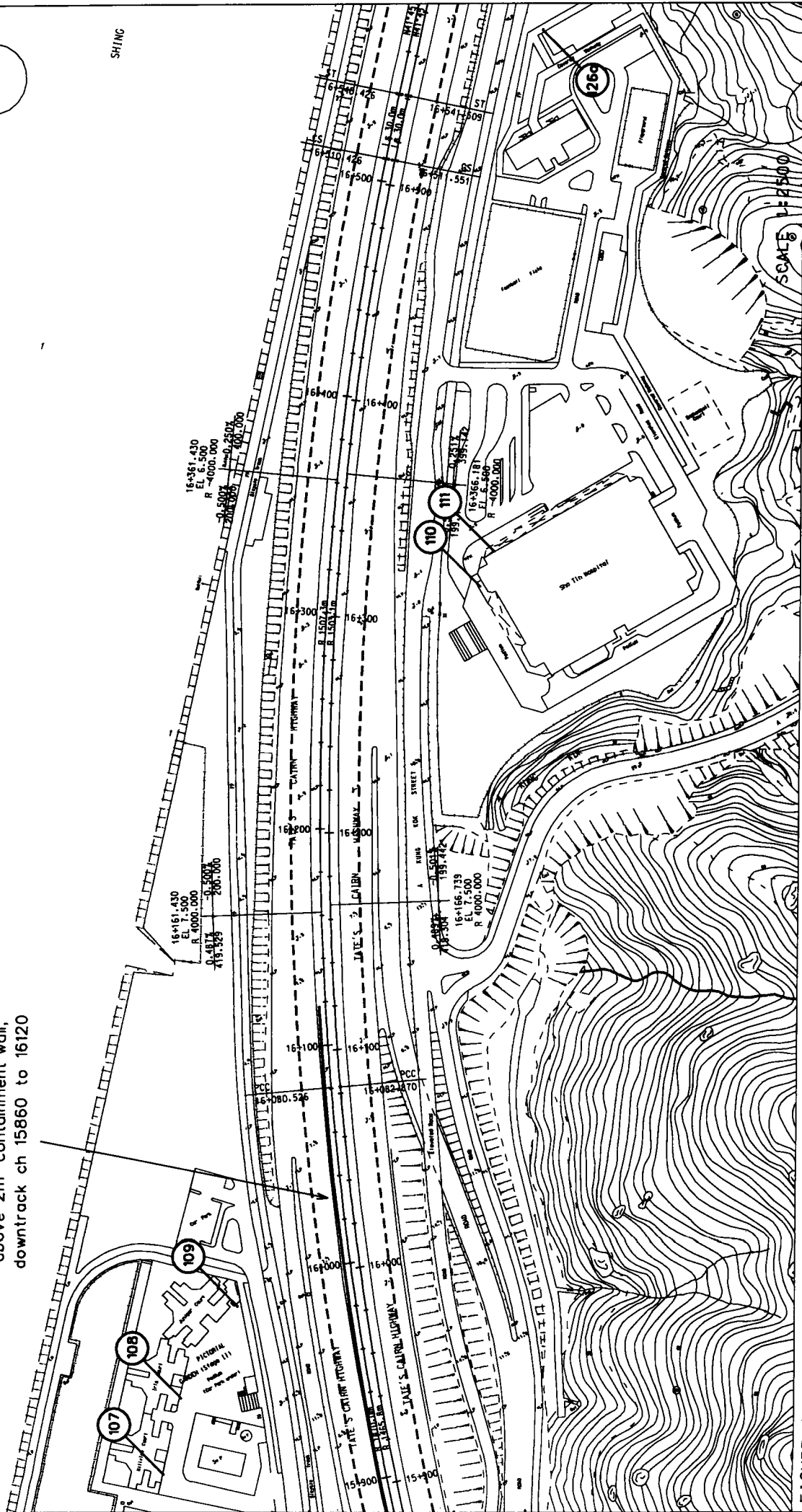
Environmental
 Resources
 Management



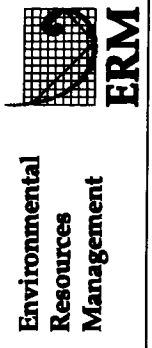


SHING

3m noise barrier,
above 2m containment wall,
downtrack ch 15860 to 16120



NOISE SENSITIVE RECEIVERS FOR OPERATIONAL NOISE
SHEK MUN TO CHEVALIER GARDEN

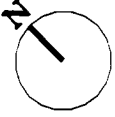


LEGEND

- Noise Sensitive Receivers
- Station Site
- Worksite Area
- Alignment

FIGURE 4.5J

SHING MUN RIVER CHANN



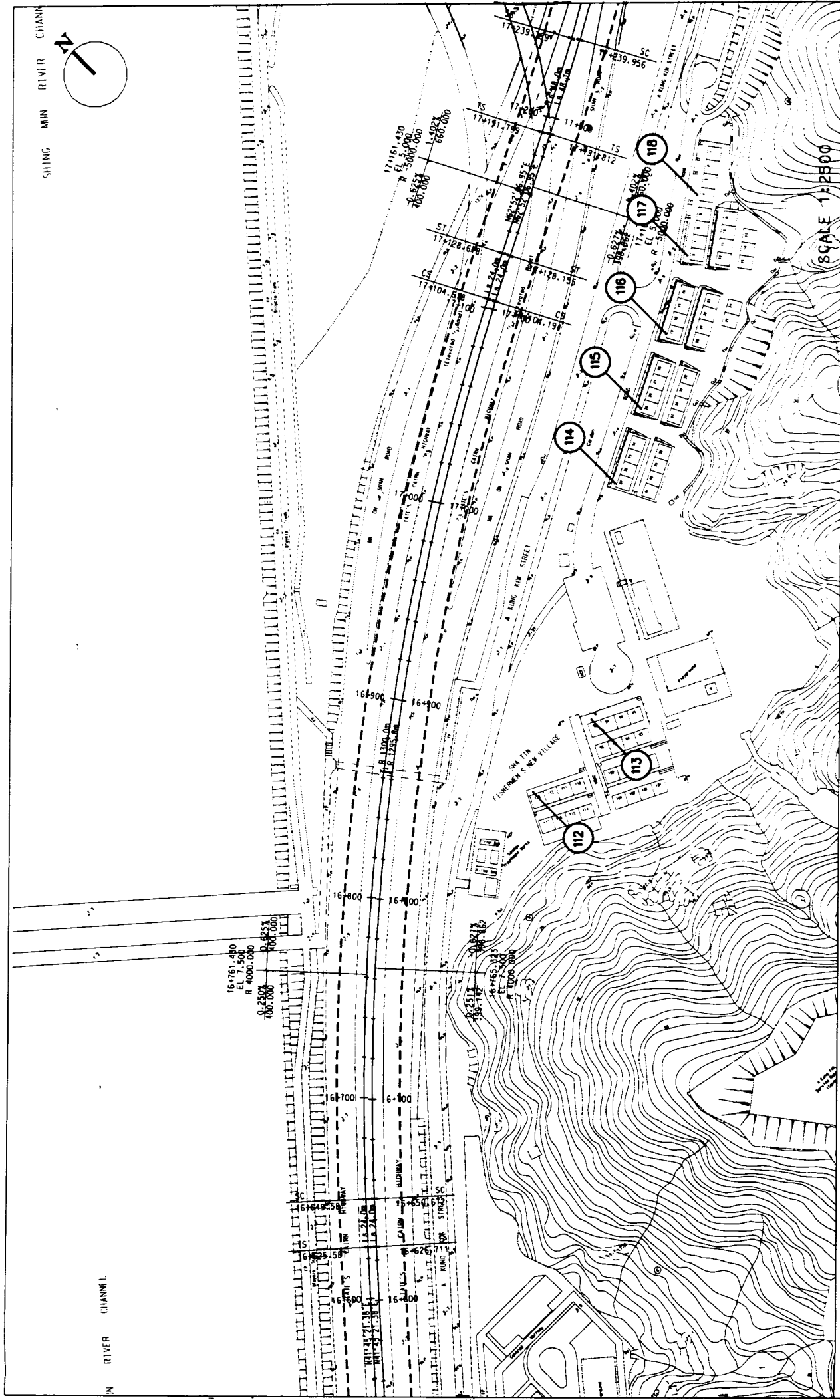
IN RIVER CHANNEL

16+751.480
EL 7.500
R 4000.000
0+2307
600.000

17+151.430
EL 5.000
R 5000.000
0+5627
700.000

17+239.450
EL 5.000
R 5000.000
0+939.956

SCALE 1:2500



NOISE SENSITIVE RECEIVERS FOR OPERATIONAL NOISE
SHEK MUN TO CHEVALIER GARDEN

Environmental
Resources
Management

LEGEND
Noise Sensitive Receivers
Station Site
Worksite Area
Alignment





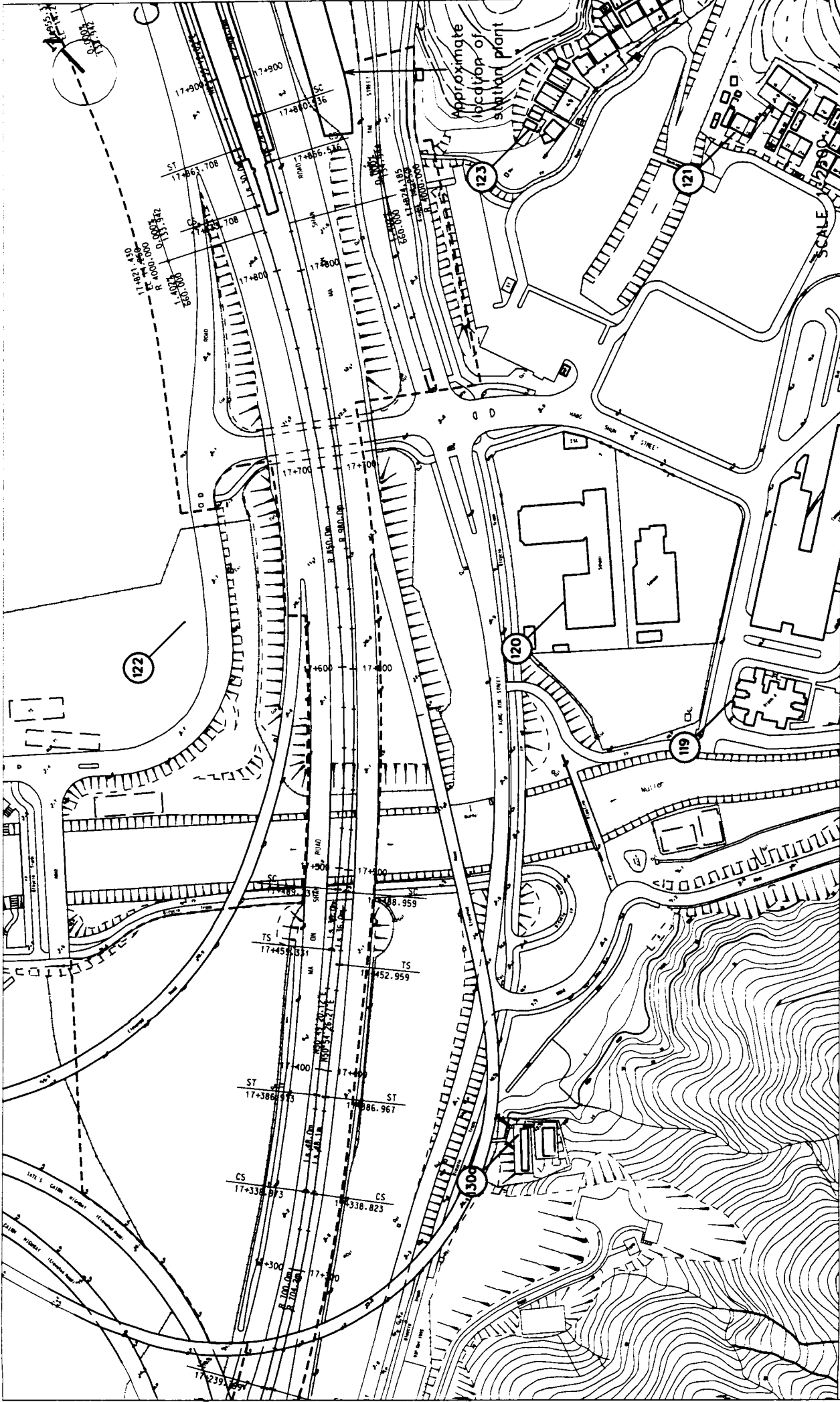
Environmental Resources Management

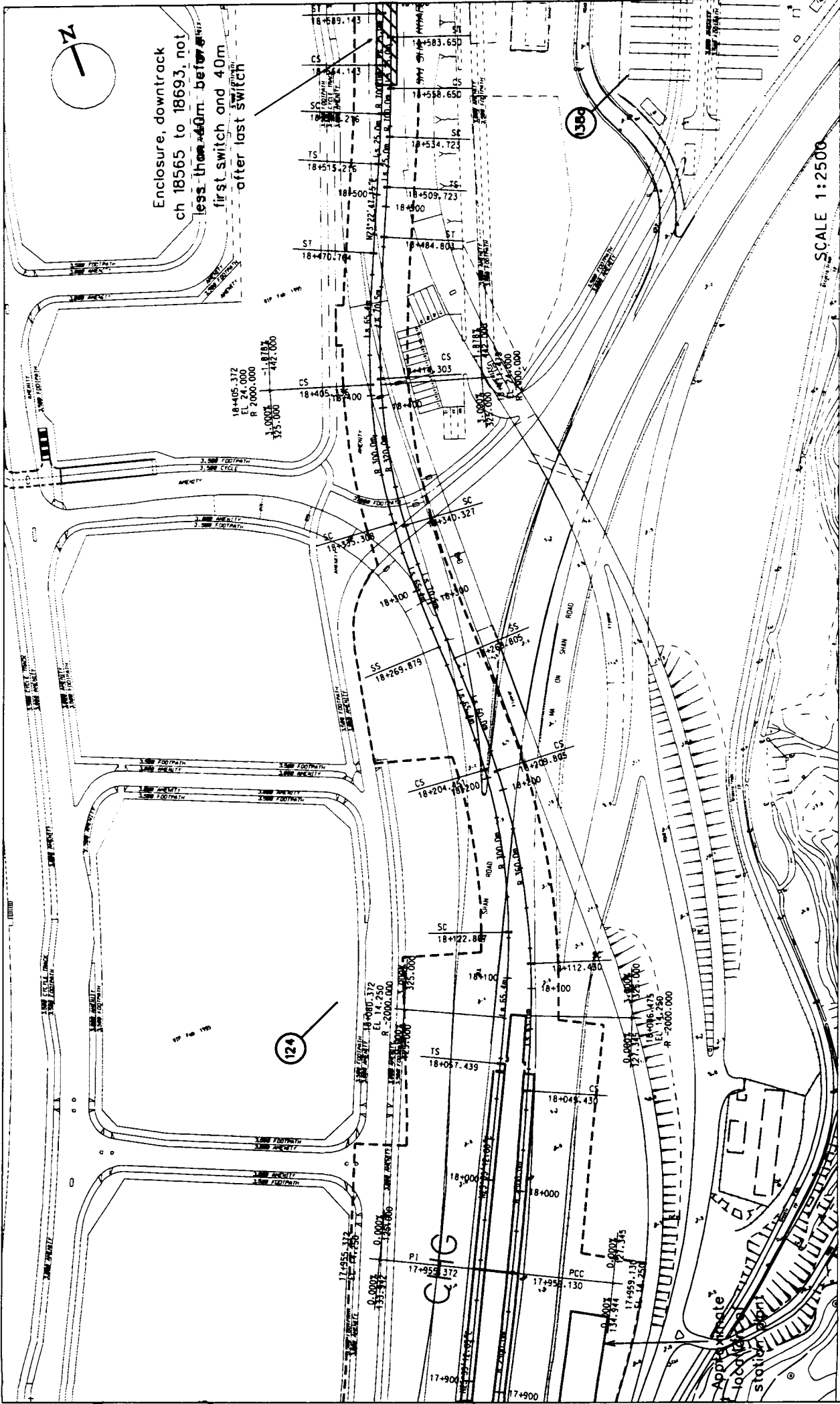
LEGEND
Noise Sensitive Receivers
Station Site
Worksite Area
Alignment

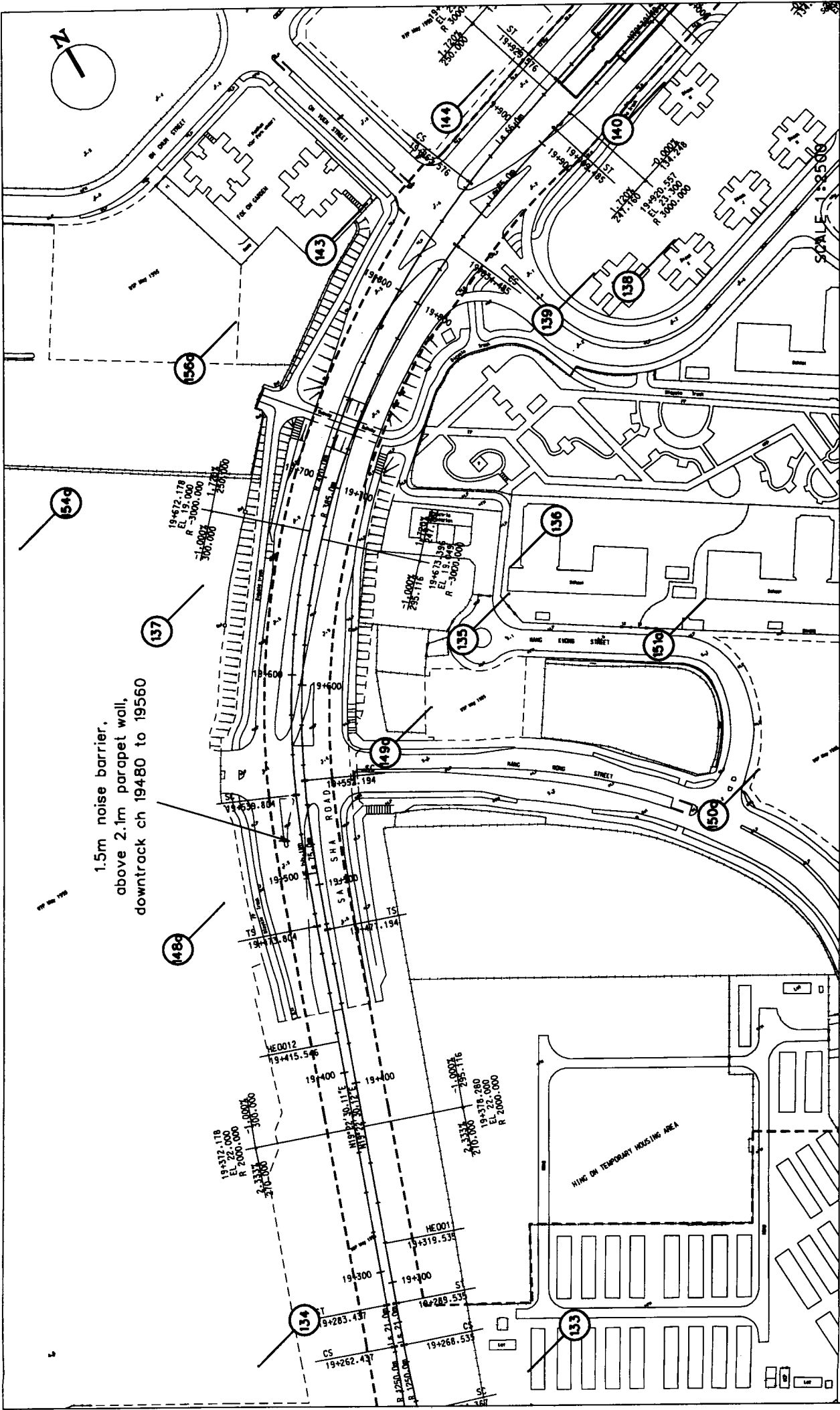
NOISE SENSITIVE RECEIVERS FOR OPERATIONAL NOISE
SHEK MUN TO CHEVALIER GARDEN

FIGURE 4.51

USM FILE: C1800012
DATE: 04/99







1.5m noise barrier,
above 2.1m parapet wall,
downtrock ch 19480 to 19560

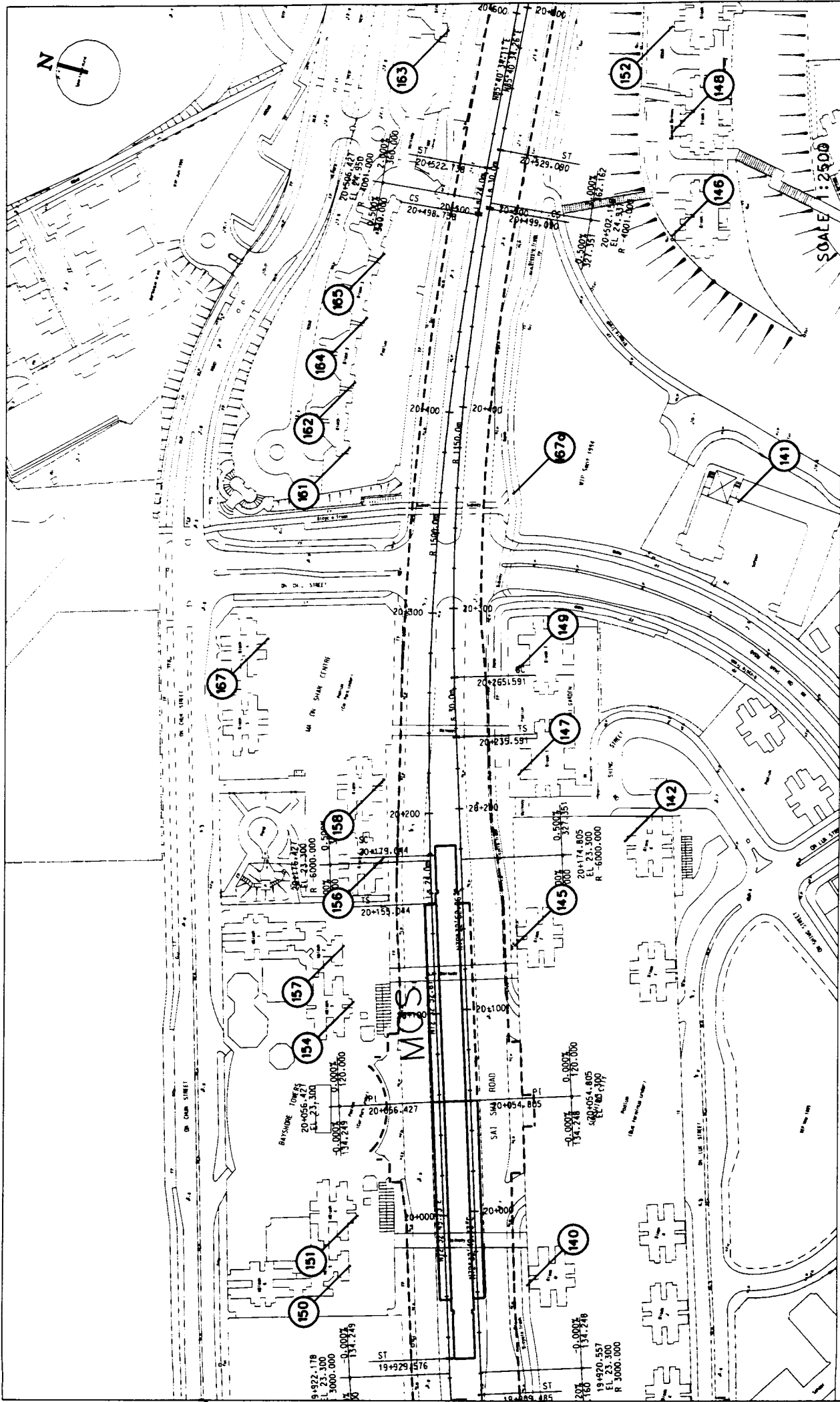


**Environmental
Resources
Management**

LEGEND
 Noise Sensitive Receivers
 Station Site
 Worksite Area
 Alignment

**NOISE SENSITIVE RECEIVERS FOR OPERATIONAL NOISE
HENG ON TO MA ON SHAN**

FIGURE 4.50



NOISE SENSITIVE RECEIVERS FOR OPERATIONAL NOISE
MA ON SHAN TO LEE ON

FIGURE 4.5D

Environmental
Resources
Management

LEGEND
 Noise Sensitive Receivers
 Station Site
 Worksite Area
 Alignment





Environmental Resources Management

- LEGEND
- Noise Sensitive Receivers
 - Station Site
 - Worksite Area
 - Alignment

NOISE SENSITIVE RECEIVERS FOR OPERATIONAL NOISE
MA ON SHAN TO LEE ON

FIGURE 4.5q

USM FILE: C1890017
DATE: 04/99

