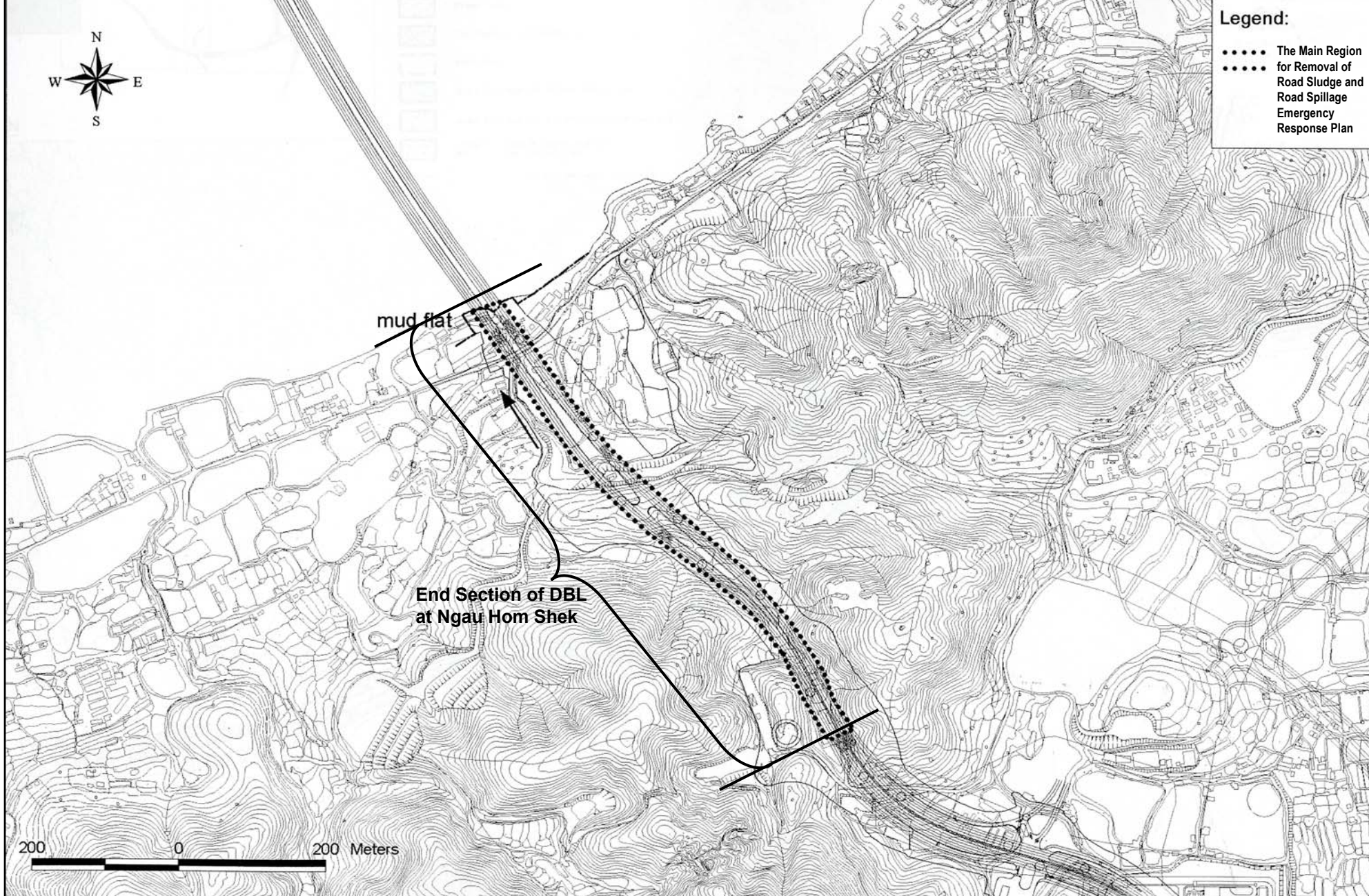




Legend:

- The Main Region
- for Removal of Road Sludge and Road Spillage Emergency Response Plan



Deep Bay Link and Widening of Yuen Long Highway between Lam Tei and Shap Pat Heung Interchange (Lam Tei to Tan Kwai Tsuen Section) -

The Main Region for Removal of Road Sludge and Road Spillage Emergency Response Plan

Figure 9

Environmental Permit No.: EP-163/2003/B

