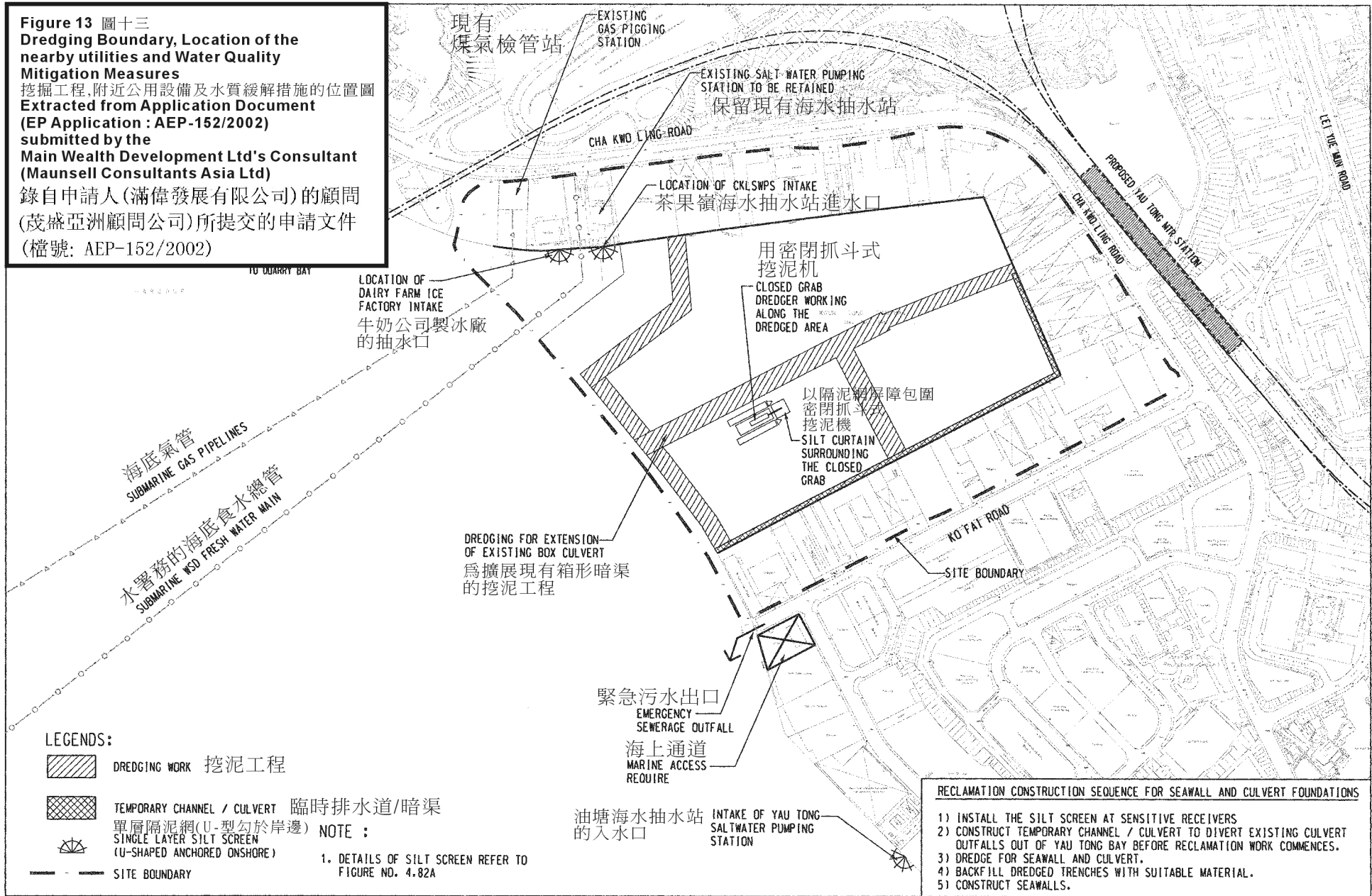


Figure 13 圖十三
Dredging Boundary, Location of the nearby utilities and Water Quality Mitigation Measures
 挖掘工程, 附近公用設備及水質緩解措施的位置圖
 Extracted from Application Document (EP Application : AEP-152/2002) submitted by the Main Wealth Development Ltd's Consultant (Maunsell Consultants Asia Ltd) 錄自申請人(滿偉發展有限公司)的顧問(茂盛亞洲顧問公司)所提交的申請文件(檔號: AEP-152/2002)



- RECLAMATION CONSTRUCTION SEQUENCE FOR SEAWALL AND CULVERT FOUNDATIONS**
- 1) INSTALL THE SILT SCREEN AT SENSITIVE RECEIVERS
 - 2) CONSTRUCT TEMPORARY CHANNEL / CULVERT TO DIVERT EXISTING CULVERT OUTFALLS OUT OF YAU TONG BAY BEFORE RECLAMATION WORK COMMENCES.
 - 3) DREDGE FOR SEAWALL AND CULVERT.
 - 4) BACKFILL DREDGED TRENCHES WITH SUITABLE MATERIAL.
 - 5) CONSTRUCT SEAWALLS.

Maunsell in association with
 WHA, DLN,
 EHS, MEMCL, MGS

YAU TONG BAY DEVELOPMENT
 MITIGATION MEASURES FOR WATER QUALITY IMPACT DURING DREDGING AND FILLING OF THE PROPOSED STORMWATER BOX CULVERT AND SEAWALL

MAIN WEALTH DEVELOPMENT LIMITED
 Scale 1 : 3500
 Date JAN 01
 Cad. Ref. 94697/01/fig2.4a.dgn

NOTE :
 1. DETAILS OF SILT SCREEN REFER TO FIGURE NO. 4.82A