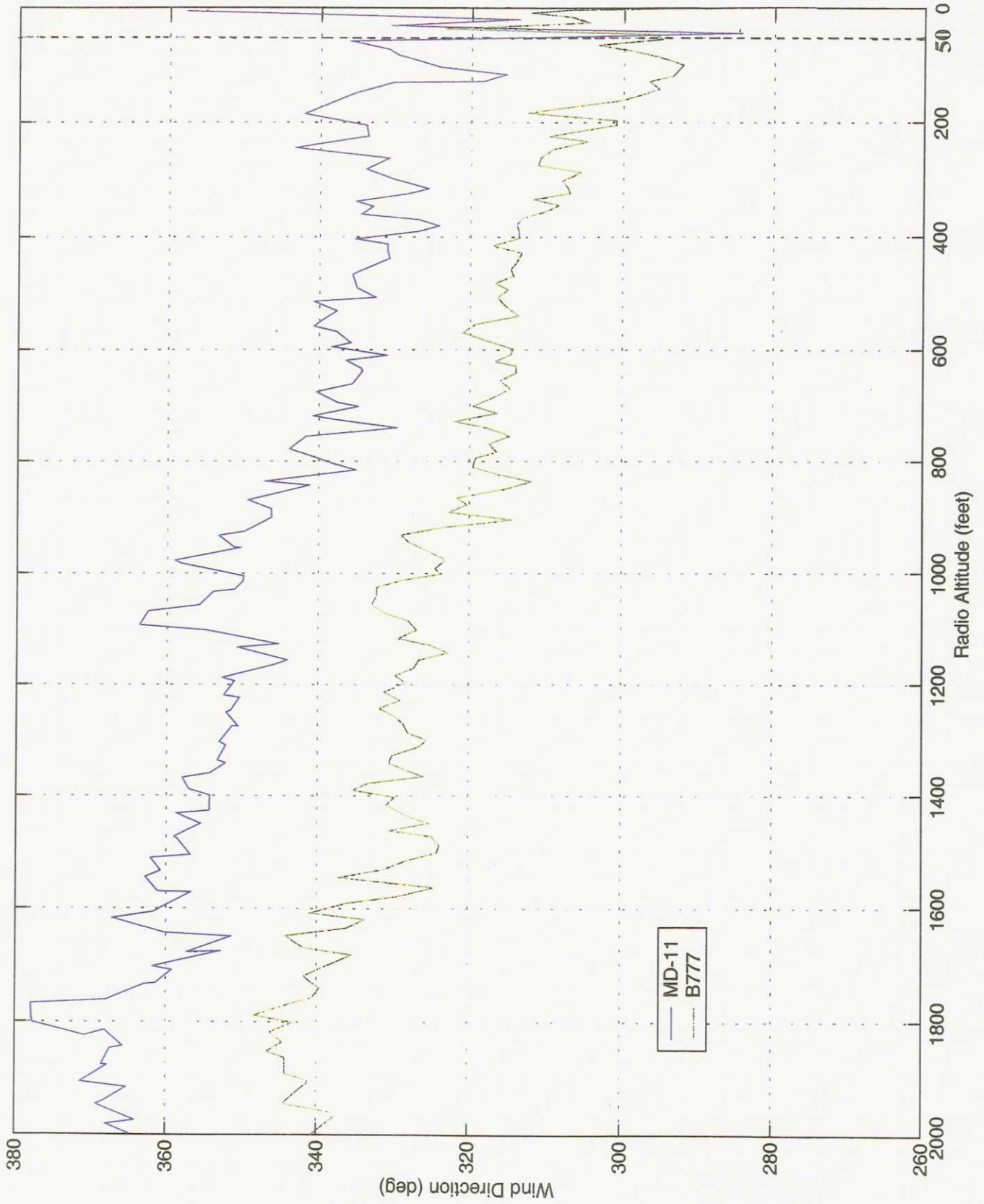
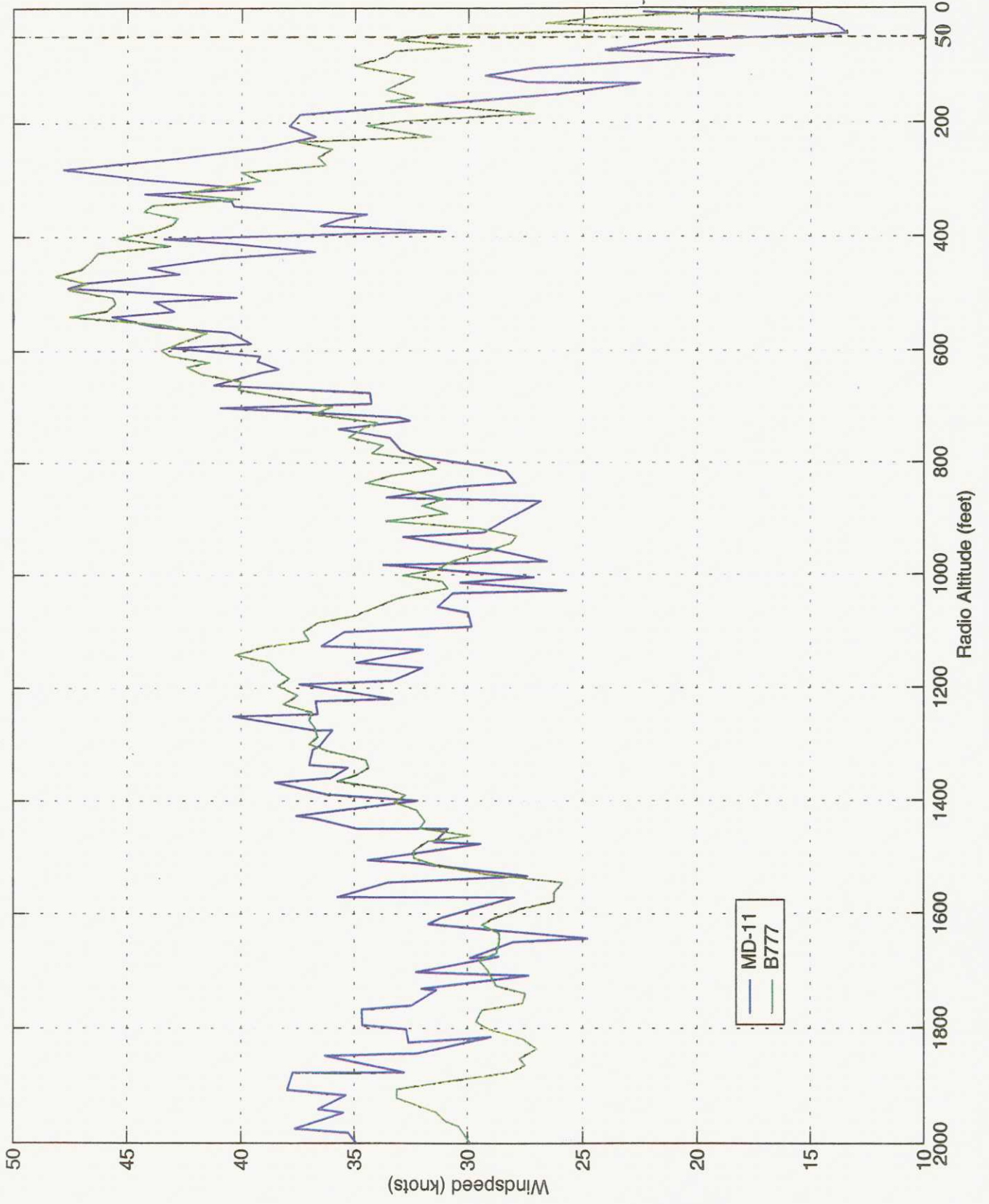


COMPARATIVE WIND DATA - MD11 / B777 AIRCRAFT



Note : See qualification at Paragraph 1.18.4 of the report regarding accuracy of MD11 wind data below 50 feet RA



Note : See qualification at Paragraph 1.18.4 of the report regarding accuracy of MD11 wind data below 50 feet RA

THE BOEING COMPANY

COMPARISON OF 2003 DERIVED WINDS AND JULY 2000 WINDS
USED IN THE MD-11 SIMULATOR
HEADWIND AND CROSSWIND COMPONENTS VERSUS RADIO ALTITUDE

2003 DERIVED WINDS
JULY 2000 SIMULATOR

INFORMATION FROM HKCAD DRAFT ACCIDENT REPORT APRIL 2002

ATC TIME	WIND DIR.	WIND SPEED
09:40 CHI642 ACKNOWLEDGES ATIS(W)	320	30 GUSTING 45
10:14 CHI642 ACKNOWLEDGES ATIS(X)	300	35
10:38:56 TOWER TO CHI642	330	26 GUSTING 36
10:41:31 TOWER TO CHI642	320	25 GUSTING 33
10:42:44 TOWER TO CHI642	320	28 GUSTING 36
10:43:26 TOUCHDOWN	320	

CALCULATED
HEADWIND
COMPONENT
(KNOTS)

CALCULATED RELATIVE TO THE RUNWAY
(MAGNETIC HEADING 253 DEGREES)

POSITIVE=FROM THE RIGHT

CALCULATED
CROSSWIND
COMPONENT
(KNOTS)

POSITIVE=UPDRAFT

CALCULATED
VERTICAL
WIND
(KNOTS)

RADIO ALTITUDE (FEET)

CALC	JDA	16OCT03	REVISED	DATE
CHECK				
APPD				
APPD				

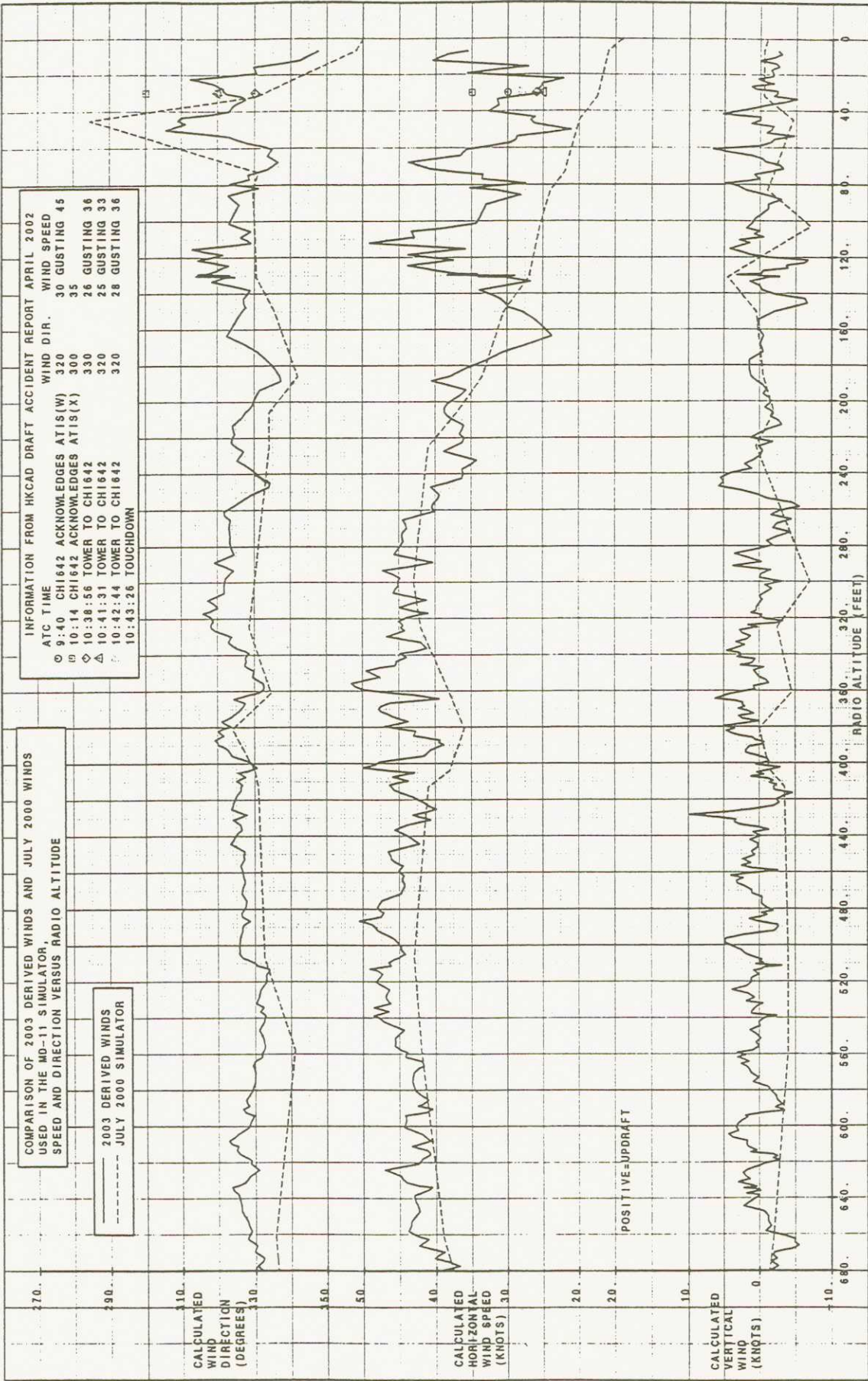
MD-11 CHI ACCIDENT AT HONG KONG
22AUG99, 2003 VS. JULY 2000 SIMULATOR
HEADWIND AND CROSSWIND COMPONENTS

FIGURE

PAGE

REV

THE BOEING COMPANY



COMPARISON OF 2003 DERIVED WINDS AND JULY 2000 WINDS USED IN THE MD-11 SIMULATOR, SPEED AND DIRECTION VERSUS RADIO ALTITUDE

— 2003 DERIVED WINDS
 - - - JULY 2000 SIMULATOR

INFORMATION FROM HKCAD DRAFT ACCIDENT REPORT APRIL 2002

ATC TIME	WIND DIR.	WIND SPEED
09:40 CH1642 ACKNOWLEDGES ATIS(W)	320	30 GUSTING 45
10:14 CH1642 ACKNOWLEDGES ATIS(X)	300	35
10:38:56 TOWER TO CH1642	330	26 GUSTING 36
10:41:31 TOWER TO CH1642	320	25 GUSTING 33
10:42:44 TOWER TO CH1642	320	28 GUSTING 36
10:43:26 TOUCHDOWN		

CALC	JDA	220C13	REVISED	DATE
CHECK				
APFD				
APFD				

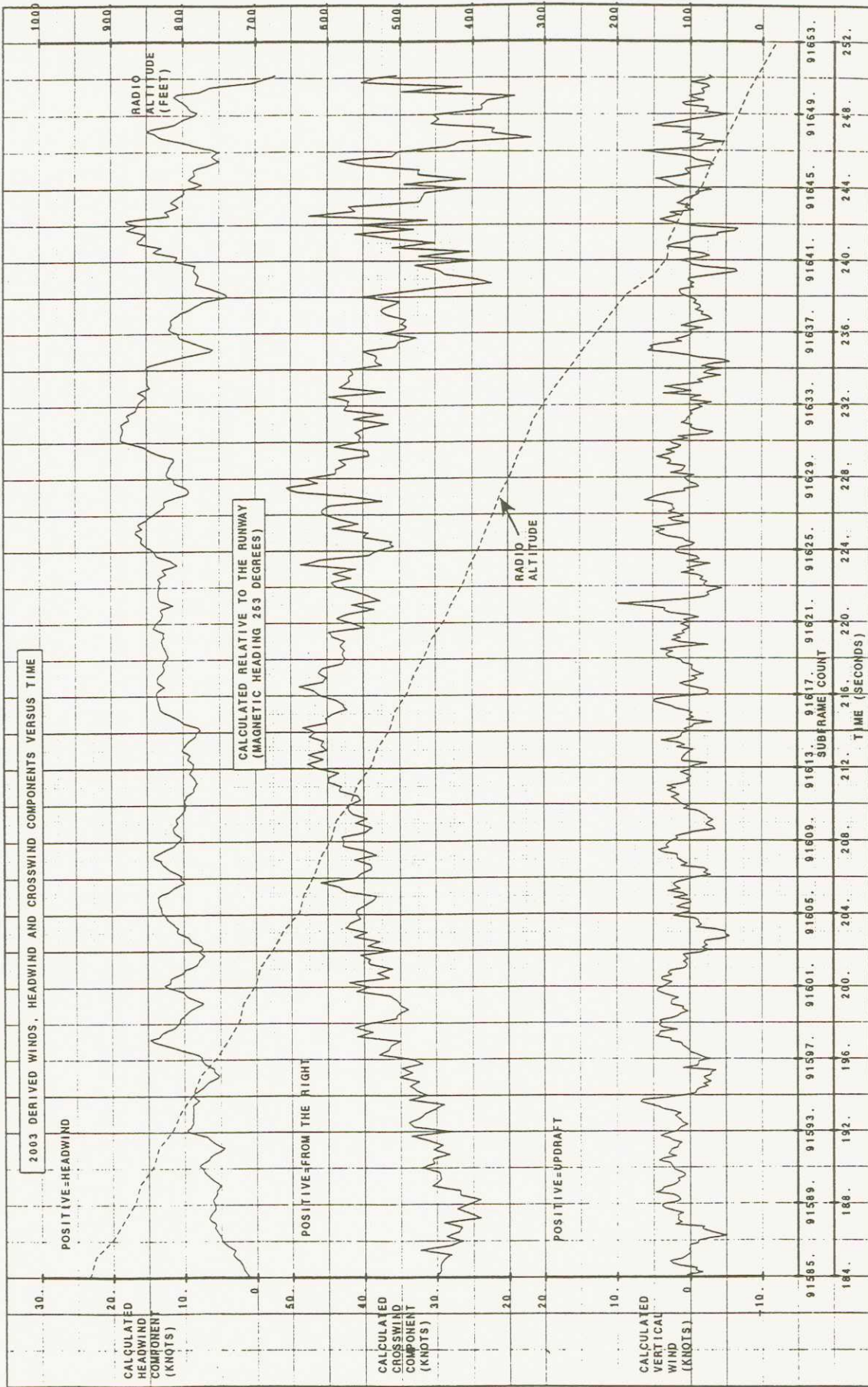
MD-11 CHI ACCIDENT AT HONG KONG
 22AUG99, 2003 VS. JULY 2000 SIMULATOR

WIND SPEED AND DIRECTION

FIGURE 2

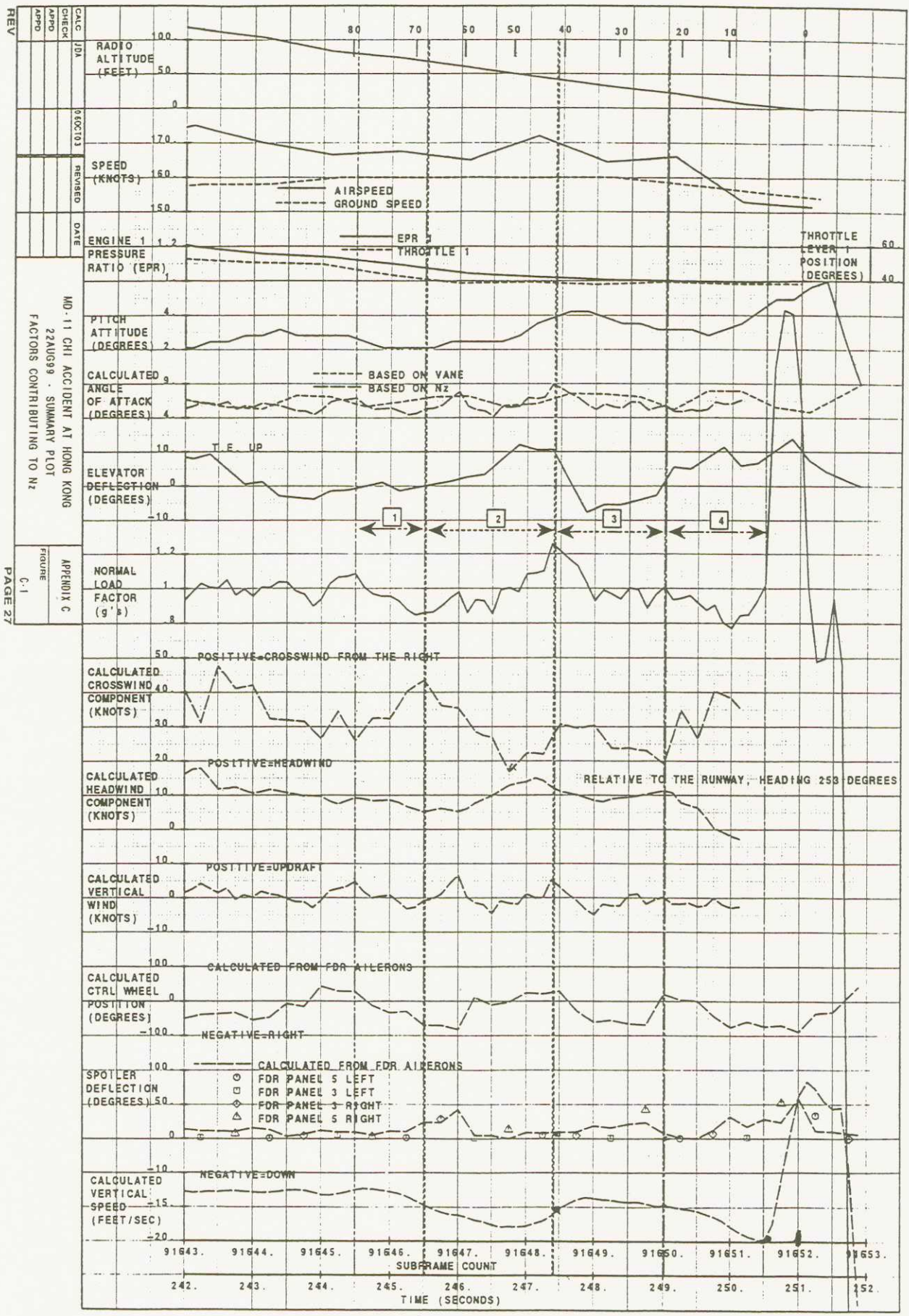
PAGE 2

THE BOEING COMPANY



CALC	JDA	REVISED	DATE	APPENDIX A
CHECK				FIGURE
APPD				A-1
APPD				

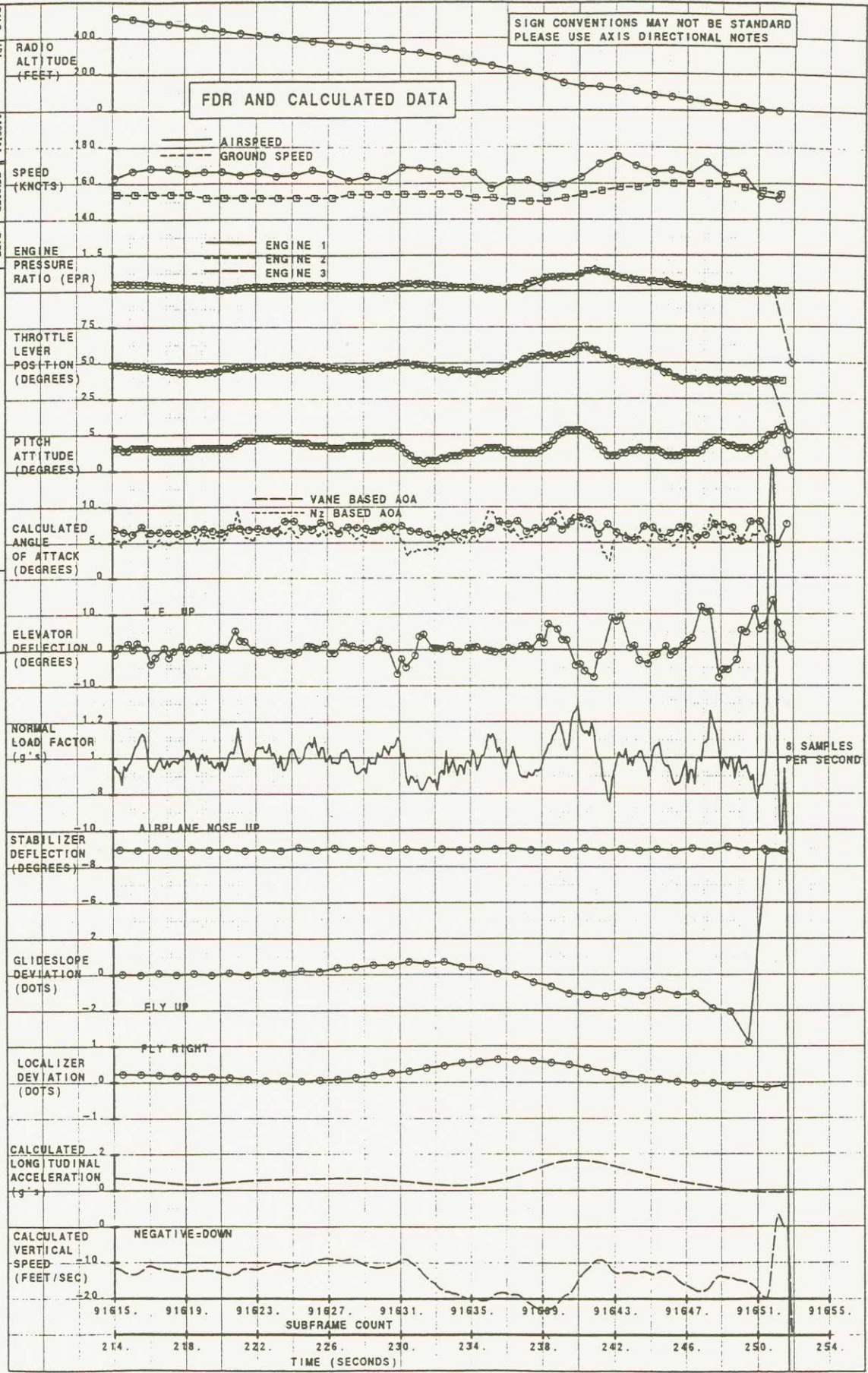
MD-11 CHI ACCIDENT AT HONG KONG
22AUG99, 2003 DERIVED WINDS
HEADWIND AND CROSSWIND VS. TIME



REV

CALC	JDA	0100103	DATE	MO. 11 CHI ACCIDENT AT HONG KONG
CHECK		REVISED		22AUG99
APPRO				LONGITUDINAL AXIS VS. TIME: LANDING
APPRO				APPENDIX 8
				FIGURE 8-1

PAGE 20



THE BOEING COMPANY

REV

CALC JDA

CHECK

APPRO

APPRO

DATE

REVISED

DATE

REVISED

DATE

REVISED

DATE

REVISED

DATE

REVISED

DATE

REVISED

DATE

REVISED

DATE

REVISED

DATE

REVISED

DATE

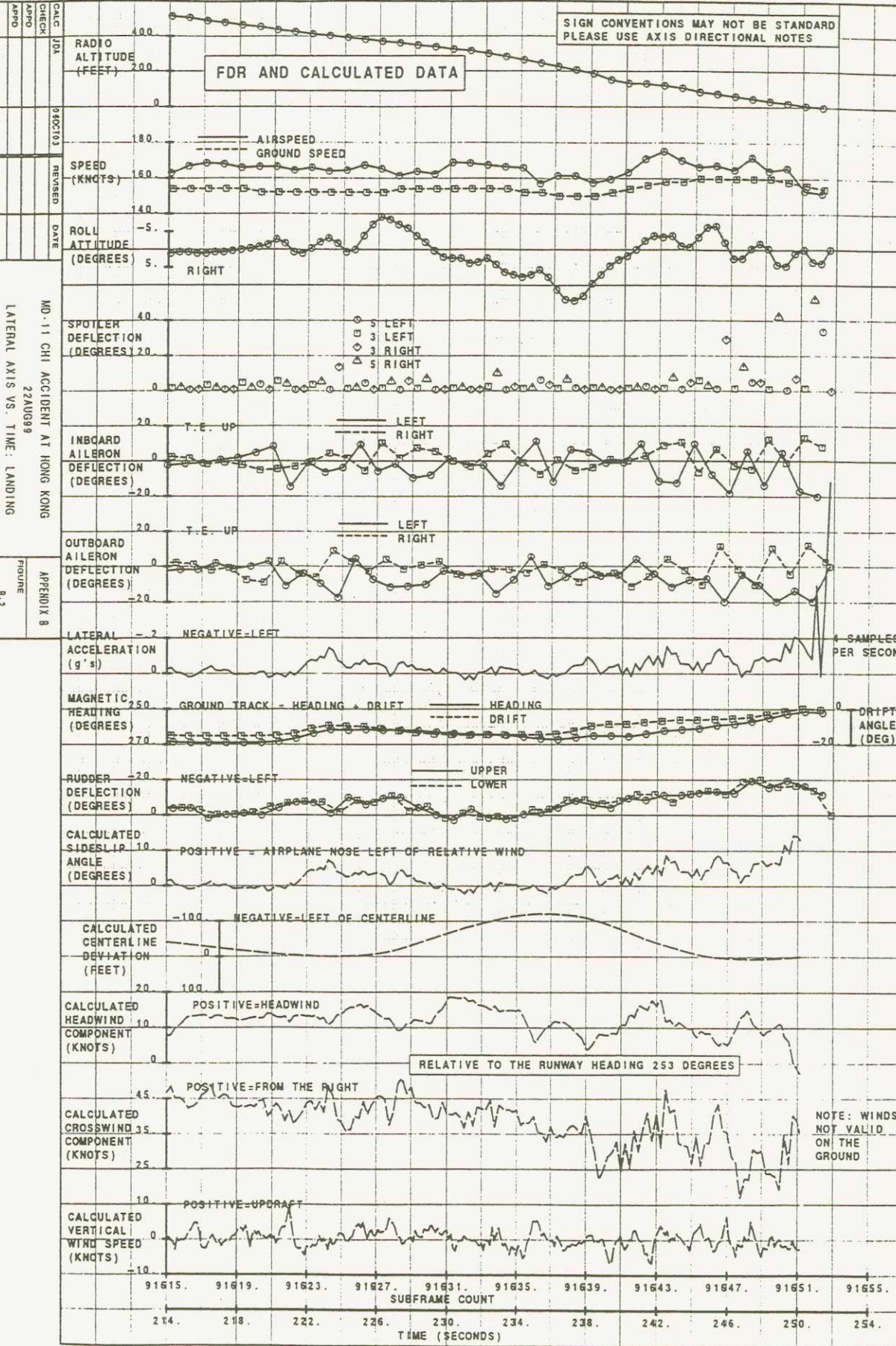
REVISED

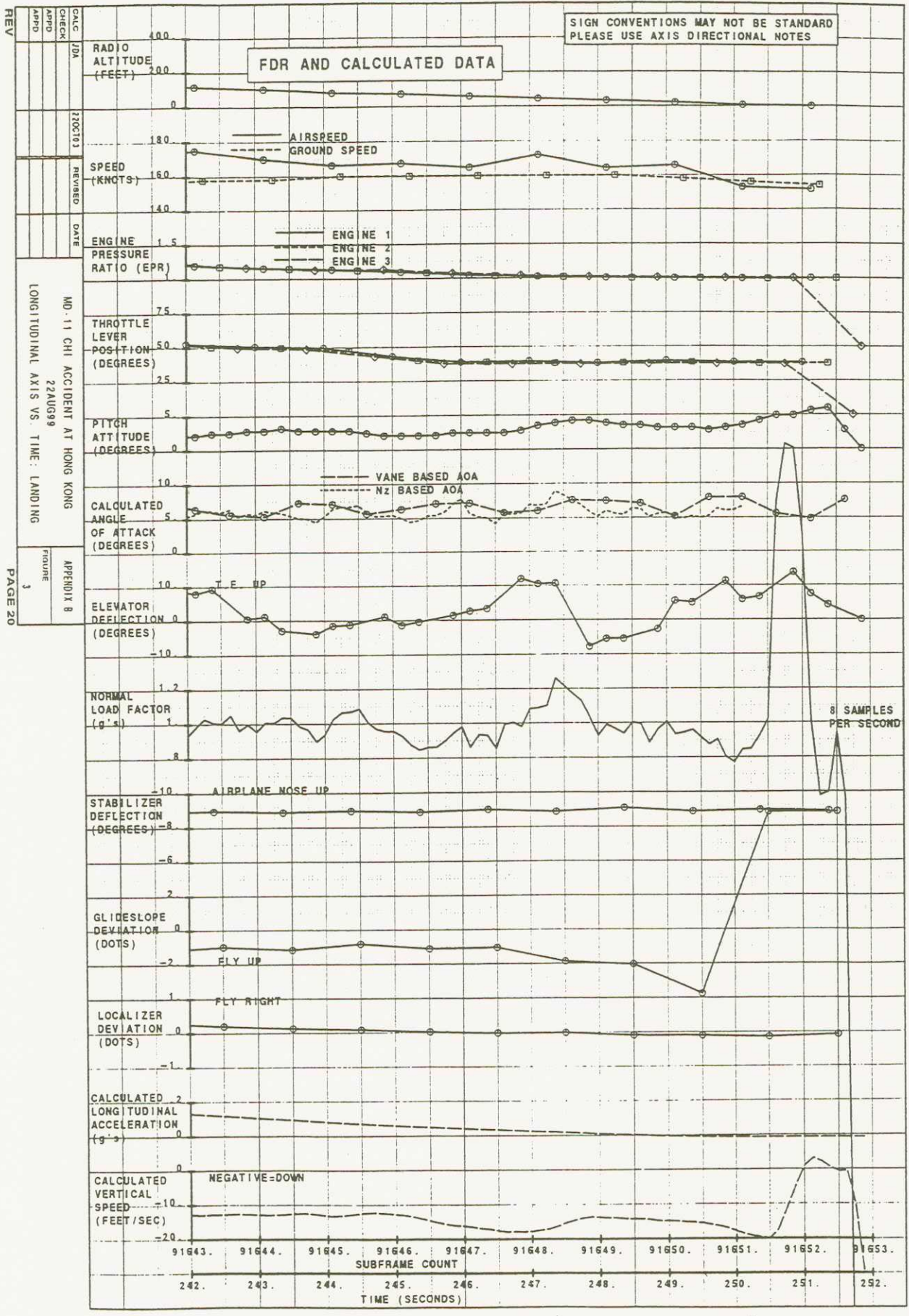
DATE

REVISED

DATE

REVISED





REV

CALC JDA

CHECK

APRD

APRD

220C103

REVIEWED

DATE

MD-11 CHI ACCIDENT AT HONG KONG
22 AUG 99

LONGITUDINAL AXIS VS. TIME: LANDING

APPENDIX B
FIGURE 1

PAGE 20

THE BOEING COMPANY

