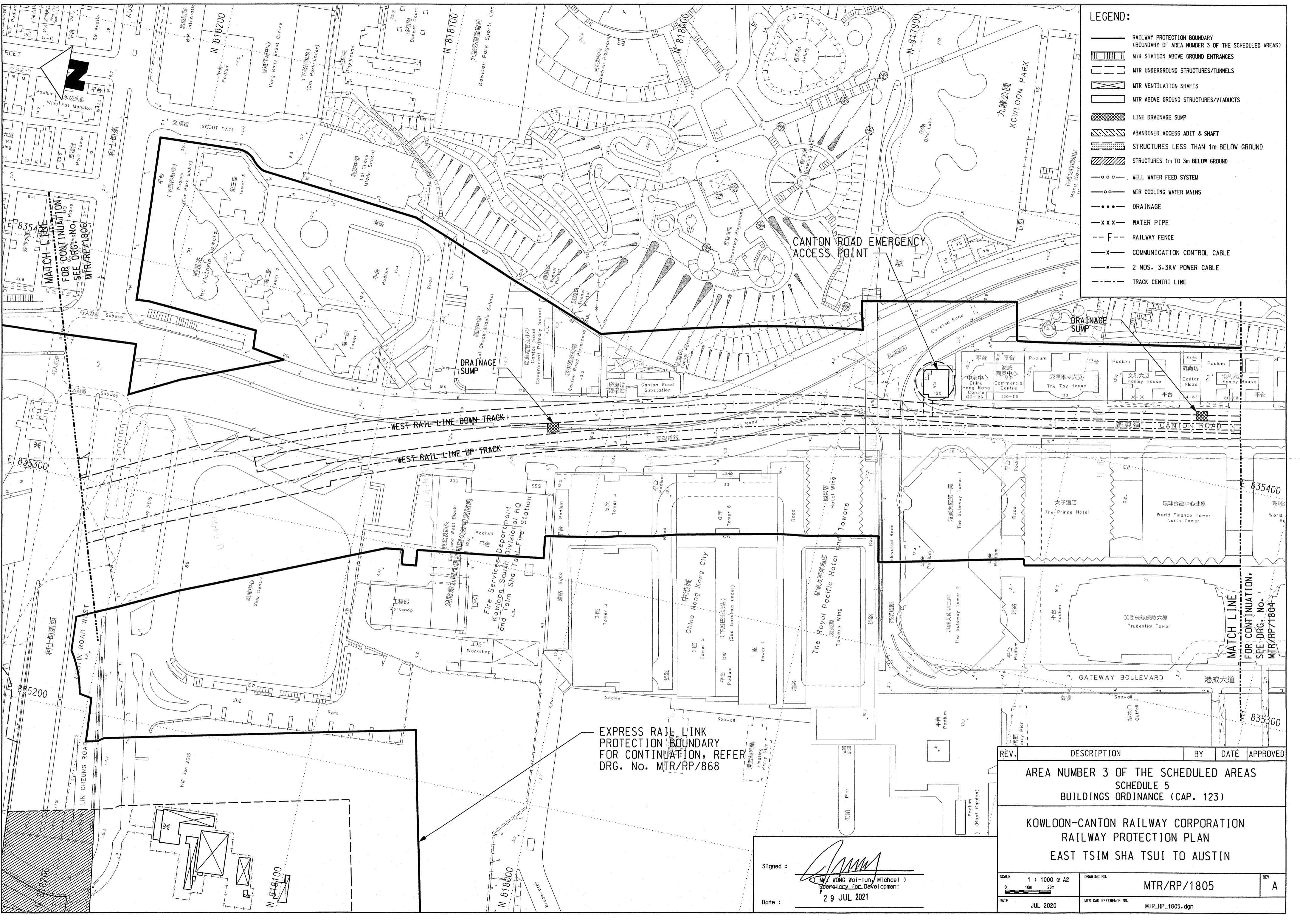


Maps reproduced with permission of the Director of Lands, (C) Hong Kong Government.



- LEGEND:**
- RAILWAY PROTECTION BOUNDARY (BOUNDARY OF AREA NUMBER 3 OF THE SCHEDULED AREAS)
 - MTR STATION ABOVE GROUND ENTRANCES
 - MTR UNDERGROUND STRUCTURES/TUNNELS
 - MTR VENTILATION SHAFTS
 - MTR ABOVE GROUND STRUCTURES/VIADUCTS
 - LINE DRAINAGE SUMP
 - ABANDONED ACCESS ADIT & SHAFT
 - STRUCTURES LESS THAN 1m BELOW GROUND
 - STRUCTURES 1m TO 3m BELOW GROUND
 - WELL WATER FEED SYSTEM
 - MTR COOLING WATER MAINS
 - DRAINAGE
 - WATER PIPE
 - RAILWAY FENCE
 - COMMUNICATION CONTROL CABLE
 - 2 NDS. 3.3KV POWER CABLE
 - TRACK CENTRE LINE

MATCH LINE FOR CONTINUATION, SEE DRG. NO. MTR/RP/1806

MATCH LINE FOR CONTINUATION, SEE DRG. NO. MTR/RP/1804

EXPRESS RAIL LINK PROTECTION BOUNDARY FOR CONTINUATION, REFER DRG. No. MTR/RP/868

REV.	DESCRIPTION	BY	DATE	APPROVED
AREA NUMBER 3 OF THE SCHEDULED AREAS SCHEDULE 5 BUILDINGS ORDINANCE (CAP. 123)				
KOWLOON-CANTON RAILWAY CORPORATION RAILWAY PROTECTION PLAN EAST TSIM SHA TSUI TO AUSTIN				
SCALE 1 : 1000 @ A2		DRAWING NO. MTR/RP/1805		REV. A
DATE JUL 2020		MTR CAD REFERENCE NO. MTR_LP_1805.dgn		

Signed:
 Mr. WONG Wai-lun (Michael)
 Secretary for Development
 Date: 29 JUL 2021