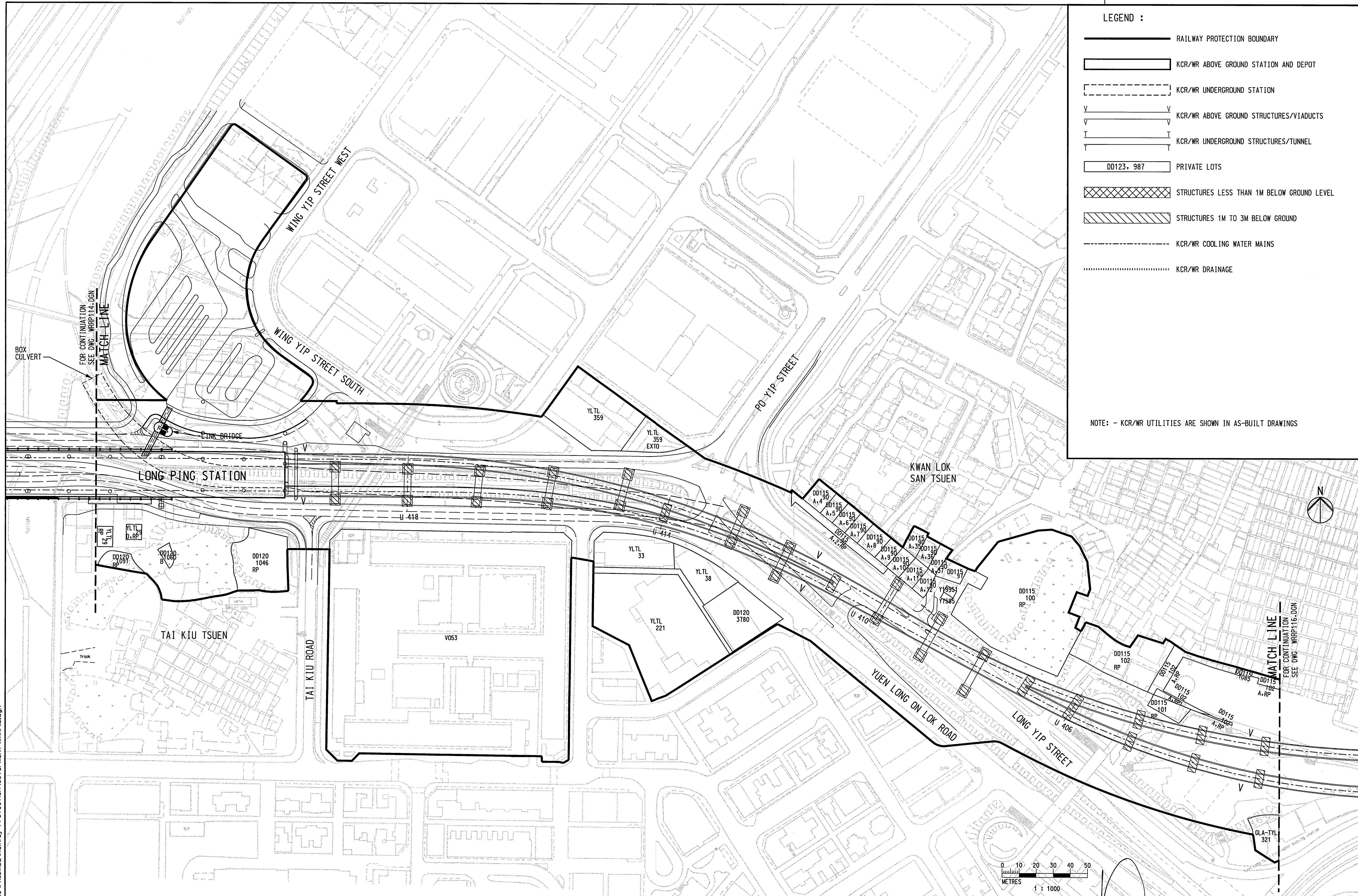


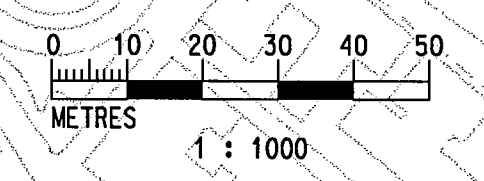
User:WorkSpace ca:\apps\mstru\WorkSpace\Users\example\uf, UserRef: ca:\apps\mstru\WorkSpace\Projects\lpcf
 PRINTED BY: A450198 02/06/03 03:35:13 PM
 FILENAME: H:\Cadd\W.R.\DWG\PRJ.WIDE\Railway Protection\Government\WRRP115.dgn



LEGEND :

- RAILWAY PROTECTION BOUNDARY
- ▭ KCR/WR ABOVE GROUND STATION AND DEPOT
- ▭ KCR/WR UNDERGROUND STATION
- V V KCR/WR ABOVE GROUND STRUCTURES/VIADUCTS
- T T KCR/WR UNDERGROUND STRUCTURES/TUNNEL
- DD123, 987 PRIVATE LOTS
- ▨ STRUCTURES LESS THAN 1M BELOW GROUND LEVEL
- ▨ STRUCTURES 1M TO 3M BELOW GROUND
- KCR/WR COOLING WATER MAINS
- KCR/WR DRAINAGE

NOTE: - KCR/WR UTILITIES ARE SHOWN IN AS-BUILT DRAWINGS



REV	DATE	BY	SUB	APP	DESCRIPTION
02JUN2003	SN	ADM	LSC		SECOND ISSUE
08NOV2002	SN	ADM	LSC		FIRST ISSUE

DESIGNED BY SN
DRAWN BY M. K. CHUNG
CHECKED BY ADM
IN CHARGE LSC
DATE



AREA NUMBER 3 OF THE SCHEDULED AREAS
 FIFTH SCHEDULE
 BUILDINGS ORDINANCE (CAP.123)
 RAILWAY LINES OF THE
 KOWLOON - CANTON RAILWAY CORPORATION
 - WEST RAIL (PHASE 1)
 RAILWAY PROTECTION PLAN

Signed:
 (Michael M Y SÜEN)
 Secretary for Housing, Planning and Lands
 Date: 6 JUN 2003



CADD FILE NO WRRP115.DGN	CADD DATE 29JUL2002
SCALE 1:1000 @ A1	DRAWING NUMBER KCR/WR/RP/115
SHEET NO 15	STAGE CODE REV 1